

# LC36M

DATA SHEET

Monitored Light Curtain  
SECTION 08 71 13

## Key Features

**Monitored entrapment protection**

**Plane of protection**

**Environmental protection**

**Standard applications**

**Commercial operator compatibility**

**Residential operator compatibility**

Compliant with UL 325

3 feet tall by door width plane of protection

IP67, Dust-tight & waterproof

- Standalone primary entrapment protection
- Double-stackable for 6-foot total height
- Paired with Photo Eye

LOGIC 5.0, Medium-Duty, DDO8900W / LJ8900W / LJ8950W / ATSW, VFOH, HPH1, HCTDCUL, Fire Door & Egress Operators

8500W, 98022, 98032

## Specifications

**Maximum operating range**

33 feet / 10.1m

**Minimum alignment distance**

3 feet / .91m

**Number of optical elements/sensors**

8

**Number of cross-beams**

22

**Operating voltage**

22VAC-24VA / DC

**Operating temperature range**

-40° F to +140° F (-40° C to +60° C)

**Regulatory**

UL recognized in US and Canada. UL 325 compliant with noted LiftMaster operator families

**FCC**

Part 15B

**ISED**

ICES-003

**Accessory specification**

100MAPS External Power Supply (optional);  
110VAC Input; capable of powering 2 sets of LC36M Light Curtains

**Accessory specification**

CPS3CARD, plug-in for 2nd monitored device on LOGIC 5.0 operators

**Warranty**

2 Years

## Construction

**Housing construction**

IP67 Water-resistant housing, anodized aluminum

**Bracket construction**

GA10 with black powder coat paint, 10-inch overall length

**Hardware**

Corrosion resistant

**Wiring size**

#22 AWG

**Transmitter diagnostics**

Amber LED

**Receiver diagnostics**

Green LED (flashes to denote obstruction of misalignment)



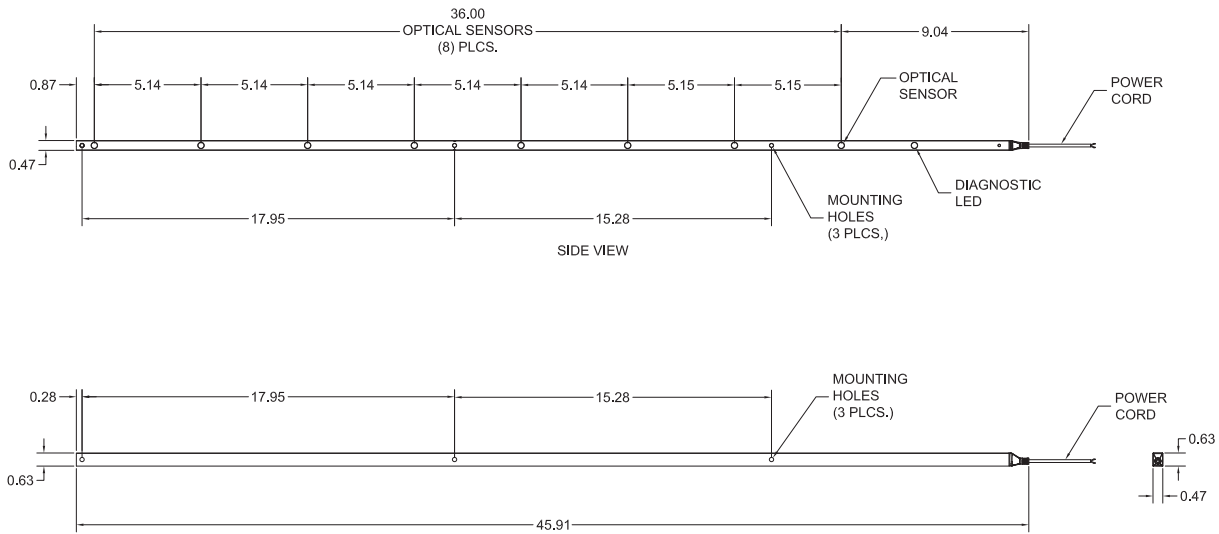
**LiftMaster**

# LC36M

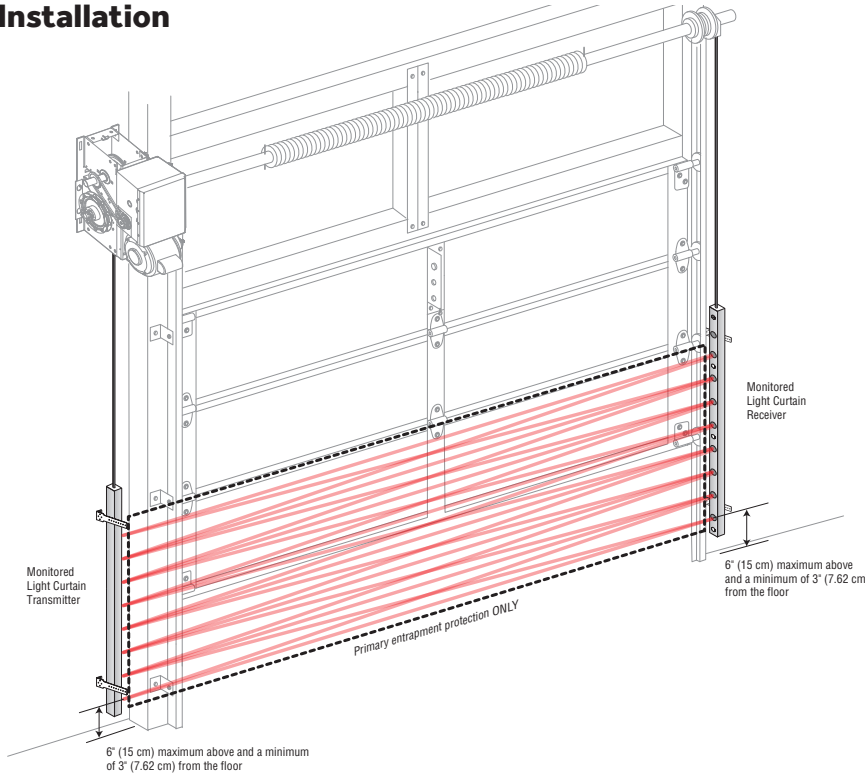
DATA SHEET

Monitored Light Curtain  
SECTION 08 71 13

## Dimensions



## Installation



© 2023 Chamberlain Group, Inc. All Rights Reserved.

LiftMaster, the LiftMaster logo, are registered trademarks of Chamberlain Group, Inc.  
LiftMaster.com  
LMARENSLC36M 9/23

**LiftMaster**