

# Specifications

**MODELS: EL00W & EL00W-RAD**

**Input Voltage:** 12-24VDC

**Relay Connections:** NC/COM/NO

**Relay Contact Ratings:** 1A

**Current:** Standby 20mA and active 30mA

## Wired e-LOOP Instructions

The e-Loop Wired system was designed for high operational sites and is a quick and easy solution to fitting wired induction loops. Just one simple line trace to cut or cover wire with cable cover for complete surface mount option without the need for any site works.

Fitting options are surface mount and flush mount for the presence mode loop, or surface mount, flush mount or completely concealed for the exit mode.

Wires direct to gate controller inputs. No need for additional transceiver.

Wireless connection is still available for connection of diagnostic tools as per all the e-Loop range.



*Wired*



### Safety instructions

Before proceeding with the product's installation, check that all the materials are in good working order and suited to the intended applications. Danger due to electric power. Contact with live parts may result in an electric current flowing through the body. Electric shock, burns, or death may result. Installation must be done by an authorized specialist.

## Installation in 3 simple steps

**First, select the method of fitting; surface mount, flush mount or concealed.**

### STEP 1:

Cut the line from the e-loop to the controller around 0.5" deep using a double blade, so groove is wide enough to fit the 0.16" diameter cable. Bolt the surface mount style to the concrete using the concrete screws provided, or core bore a hole 2.7" diameter x 0.9" deep for flush mount, or 1.5" deep for concealed.

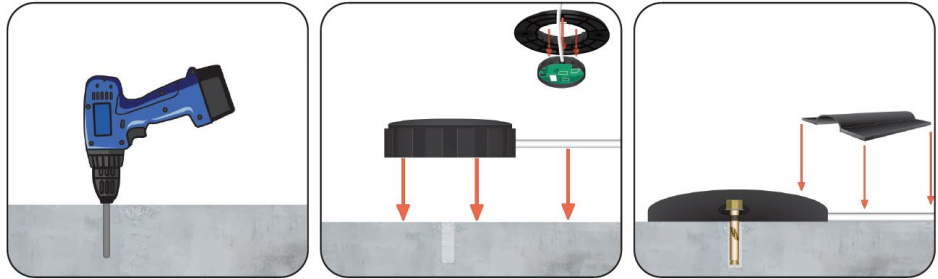
### STEP 2:

Using Sikaflex rubberised adhesive fill the base of the groove up 0.19" then sit the wire into position and add a top layer of Sikaflex to fully seal the cable. For flush mount apply Sikaflex in the base in a number of positions of the 0.9" deep hole, then press down on the e-loop until it is flush with the surface. For concealed, simply sit in the hole and cover with driveway base material or a resin.

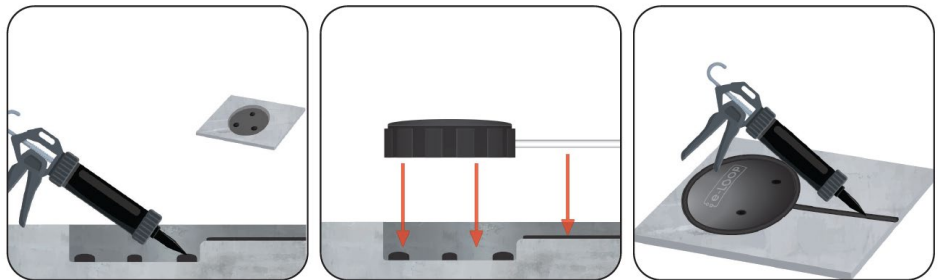
### STEP 3:

Wire into the gate controller. Once powered up the e-LOOP will automatically calibrate and will be ready to use.

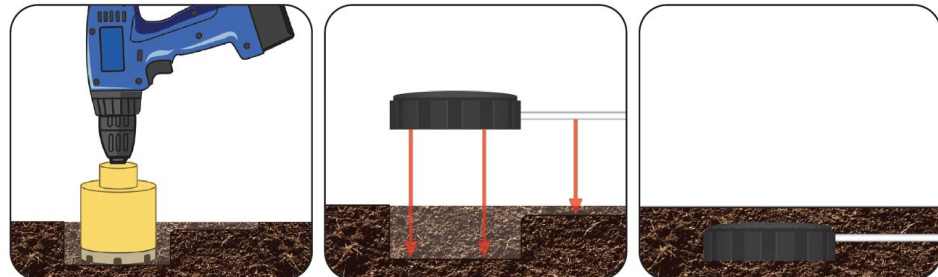
### Surface Mount:



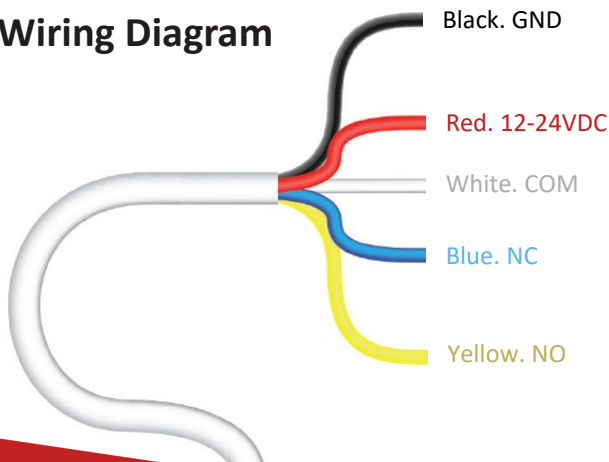
### Flush Mount:



### Concealed: (Note Exit mode loop only)



### Wiring Diagram



#### Disposal

The packaging must be disposed of in the local recyclable containers. According to the European Directive 2002/96/EC on waste electrical equipment, this device must be properly disposed of, after usage in order to ensure a recycling of the materials used. Old accumulators and batteries may not be disposed of in the household waste, since they contain pollutants and must be properly disposed of in municipal collection points or in the containers of the dealer provided. Country-specific regulations must be observed.