

ALL-O-MATIC



818-787-1988

allomatic.net

SL-150 DC

SLIDE GATE OPERATOR

Our best-selling Heavy Duty **DC Slide Gate Operator** designed to meet every demand.



SL-150 DC

- ✓ For Gates Up 60 Ft. Long
- ✓ ½ HP: 3,000 Lbs. – Max Gate Weight
1 HP: 4,000 lbs. – Max Gate Weight
- ✓ Maintenance Free Brushless DC Motor
- ✓ Integrated Battery Backup
- ✓ Pedestal and Pipe Stand Options Available



RESIDENTIAL



COMMERCIAL



MECHANICAL
FOOT PEDAL
RELEASE



INNOVATIVE
CIRCUIT BOARD



WISE M/S
COMPATIBLE



24VDC SOLAR
POWER OPTION

SLIDERS | **SWINGERS** | **OVERHEADS**

The standard by which all other automatic gate operators are measured.

SCAN FOR
PRODUCT
INFORMATION



UL 325 2018
COMPLIANT

UL 991
COMPLIANT

CSA C22.2 #247



ALL-O-MATIC



818-787-1988

allomatic.net

SCAN FOR
PRODUCT
INFORMATION



SL-150 DC

SLIDE GATE OPERATOR



SPECS

Max Gate Weight	½ HP: 3,000 lbs. 1 HP: 4,000 lbs.
Max Gate Length	60 feet
Warranty	7 year residential - 5 year commercial
Motor	24 VDC brushless – ½ HP and 1 HP motor
Gate Speed	12" per second
Power Options	115/230 VAC single phase and 24 VDC solar panel
Duty Cycle	Continuous
Battery Back Up	Integrated, with (2) 7Ah 12VDC batteries
Battery Back Up Capacity	100 cycles on a 1,000 lb. gate
Temperature Range	-40 to 160°
Gearbox Ratio	30:1 with internal clutch
Width X Length X Height	15" X 19.5" X 25"
Shipping Weight	150 lbs.
Emergency Release	Mechanical foot pedal release
Belt Size	N/A
Main Sprocket Size	40B22X1
Chain Size	40NP (20' included)
Gearbox Sprocket	40B22X1
Limit Shaft Sprocket	41B10X5/8
Breaker Requirement	20 amp dedicated
Gearbox Pulley	N/A
Motor Pulley	N/A

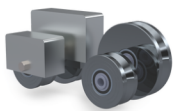
AVAILABLE ACCESSORIES



RESIDENTIAL



COMMERCIAL



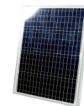
V-Groove
Wheels



TK-1000
Tandem Kit



Fire
Boxes



Solar
Panel



PRIME VD-1
Loop Detector

The Warrantor warrants the SL-150 DC Gate Operator. ALL-O-MATIC INC warrants its gate openers for a period of five (5) years in commercial installations, and for a period of seven (7) years in residential installation to be free from defects in circuitry, motor, gear box and workmanship. This warranty applies from the date of purchase to the original owner. Warrantor will repair or, at its option, replace any device which it finds to require service. This device must be sent to the warrantor at the consumer's expense. The warrantor will return the repaired or replaced unit to the customer at the consumer's expense. Labor charges for dealer service or replacement are the responsibility of the owner. These warranties are in lieu of all other warranties either expressed or implied, and ALL-O-MATIC INC shall not be liable for consequential damage. All implied warranties of merchantability and or fitness for a particular purpose are hereby disclaimed and excluded. This limitation is not valid in jurisdictions which do not allow limitation of incidental or consequential damages or limitation of warranty periods. Caution in order to obtain this policy, please complete the registration card and send it by mail within 30 days of purchasing from ALL-O-MATIC INC. or your INSTALLER. If not registered only a one year warranty on all parts will be provided.

The standard by which all other automatic gate operators are measured.

UL 325 2018
COMPLIANT

UL 991
COMPLIANT

CSA C22.2 #247

