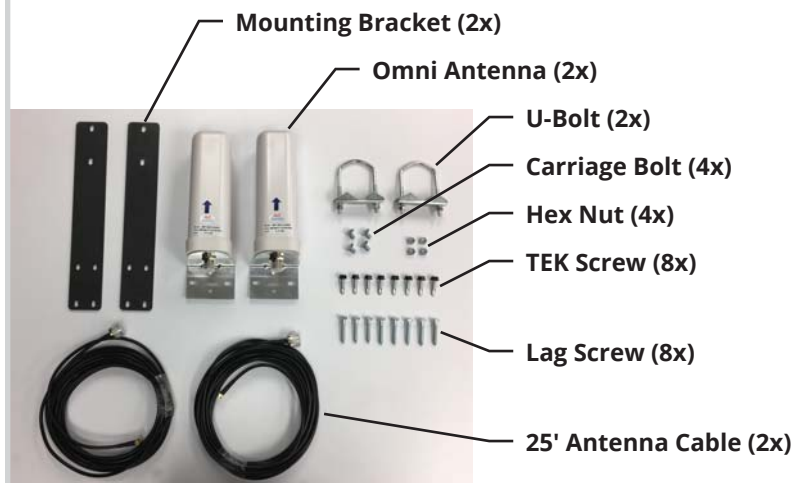


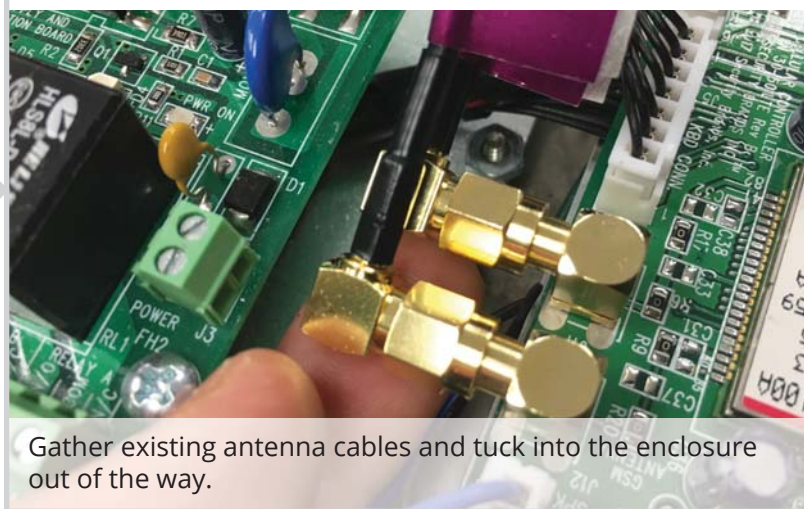
**1**

Make sure you have all items shown below.  
(1-5/8" antenna pole not included)



**2**

Disconnect existing antenna cables from jacks on Ascent unit circuit board.



**3**

Attach first antenna to first mounting bracket using carriage bolts and hex nuts.



**4**

Attach second antenna to second mounting bracket using carriage bolts and hex nuts.



**5**

Overlap mounting brackets to prepare for U-bolt installation.



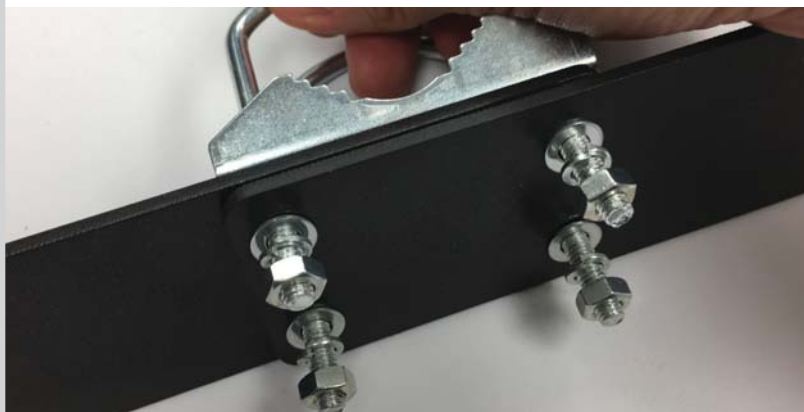
**6**

Feed U-bolts through slots on overlapping mounting brackets.



7

Install fasteners on U-Bolts to prepare for installation on antenna pole.



Install in order shown. Leave plenty of room so that assembly will slide easily onto 1-5/8" antenna pole (not included).

8

Fish 25' antenna cables from antenna pole location through back of Ascent unit.



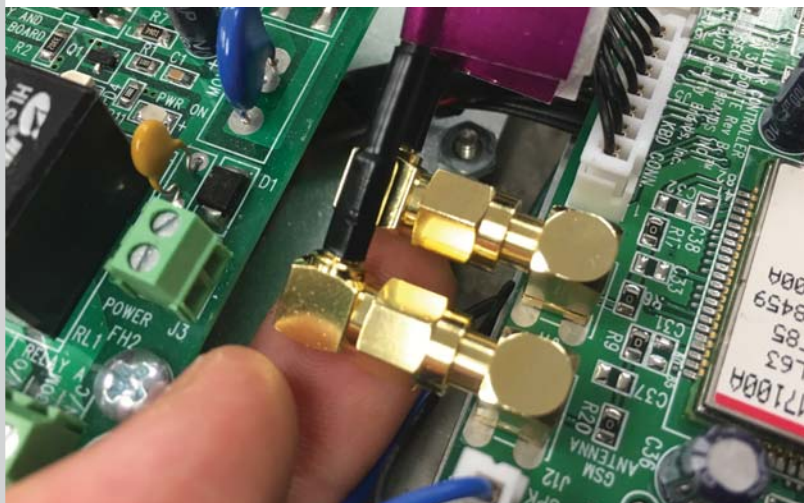
9

Attach antenna assembly to antenna pole and connect 25' antenna cables.



10

Connect 25' antenna cables to jacks on Ascent unit circuit board in any order.



### INSTALLATION COMPLETE!

TEK screws and lag screws are included for ease in alternate mounting methods.  
Consult Summit Control for best practices.

### NEED HELP

Call (844) 259-8265

Email [support@summitcontrol.com](mailto:support@summitcontrol.com)

We are available Mon-Fri / 8am-5pm Central



**SECURITY BRANDS INC**  
your *partner* in access control