

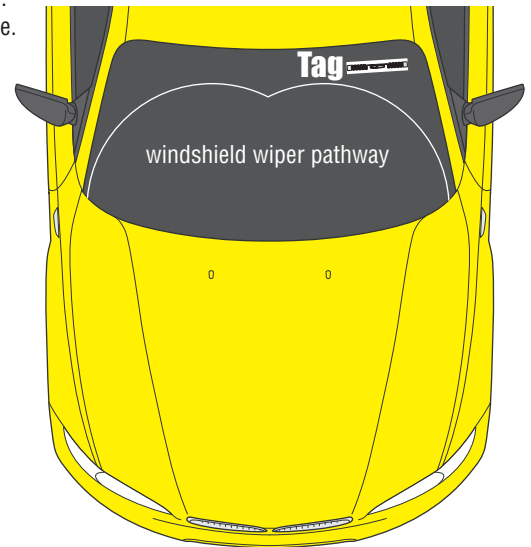
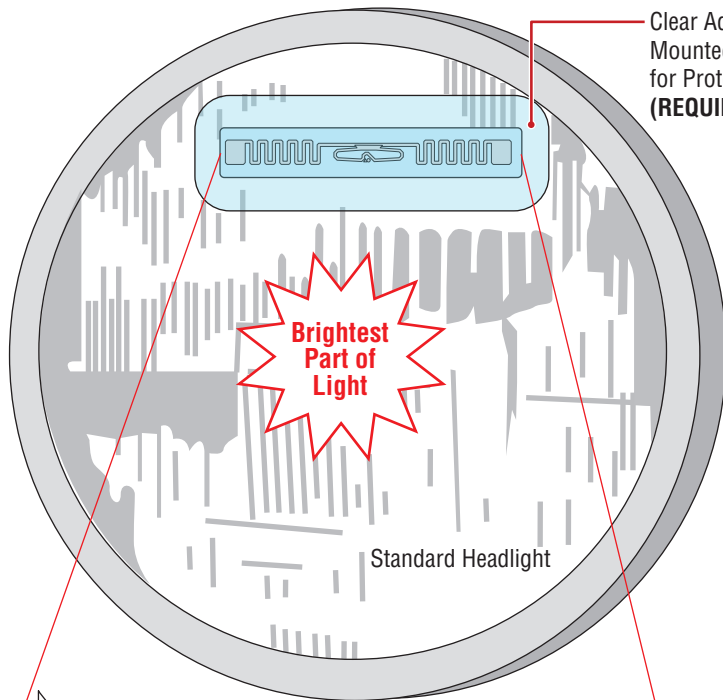
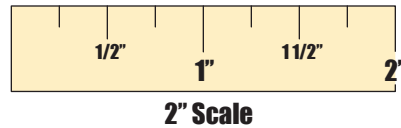
# HEADLIGHT/WINDSHIELD TAG FOR LONG RANGE ANTENNA

DoorKing Part Number  
**1508-195**

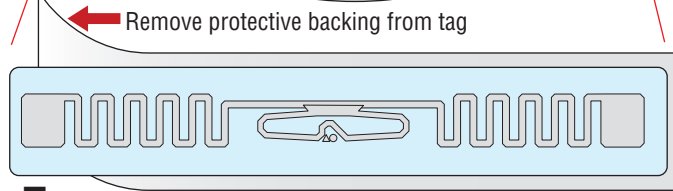
The Headlight TAG is designed to be used with the DKS 1815-350 Long Range Reader. The Tag does not contain a battery, so it never wears out. The UHF long range antenna emits an RF signal which powers the Tag when the Tag enters the scanning area of the antenna. The Tag relays its Wiegand number back to the antenna which reports the Tag's number to a connected access control system. The Tag is an effortless way to open a gate for an **authorized** vehicle.

## Installation

Tag may be mounted on the headlight (BEST RECEPTION) or windshield **NO closer than 2"** away from any metal. The farther away from metal, the better the reception. **ONLY** mount tag horizontally as shown. **DO NOT** mount tag vertically. It should be mounted out of the pathway of the windshield wiper blade when mounted outside. Clear adhesive tape **MUST** be placed over the tag to protect it from weather and car washing.

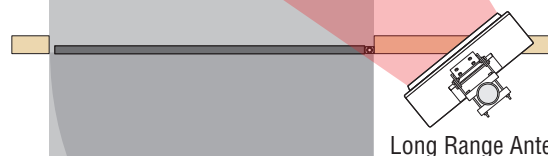
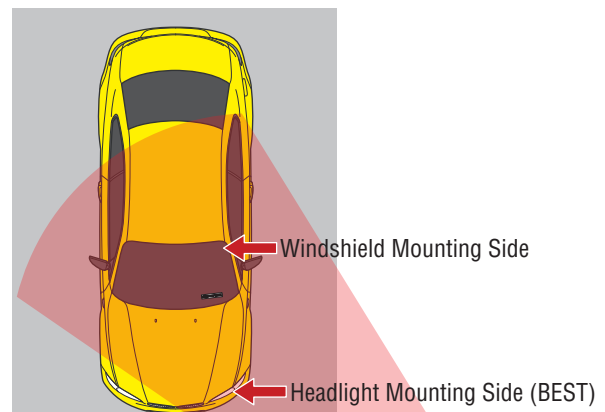


Mount Tag on **SAME** side of car as antenna if possible.



**Tag** horizontally mounted

**Note:** Wiegand code for the tag is printed on the outside of the envelope that the tag was shipped in.



Long Range Antenna Position

**BEFORE INSTALLATION:** Temporarily tape tag in place and test tag before permanently mounting it.

When mounting on headlight, place tag **off center and away from the brightest part of the light. Make sure to turn head light ON during test.** Some headlights, when turned **ON**, will **impede antenna signal** when tag is positioned **directly over** the brightest part of the light.

The Tag will be **destroyed** if removed after permanently mounting.

Make sure surface is **CLEAN** before mounting tag and the clear adhesive tape.

1508-165-D-2-18

Copyright 2018 DoorKing, Inc. All rights reserved.

**DKS**  
**DOOR KING**  
120 S. Glasgow Avenue  
Inglewood, California 90301 U.S.A.