

PLAY TIME  
ISSUE

AUTUMN / WINTER 2019

#0004

Young  
Soles  
LONDON

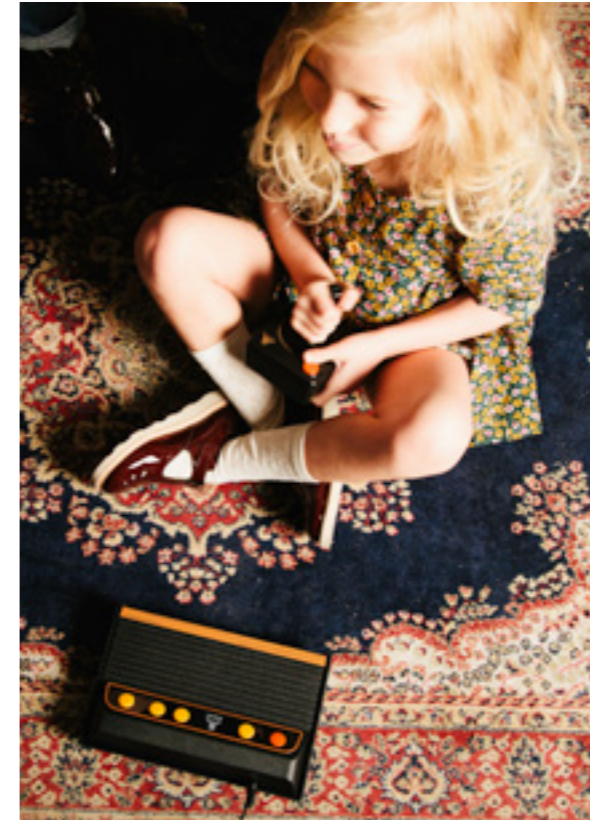
A luxury children's footwear brand with an award-winning collection of lightweight shoes, sandals and boots for both boys and girls from baby to toddler to junior.

YOUNGSOLES.LONDON

See inside for more information on the new styles and colours available from Young Soles in their Autumn Winter 2019 collection. We have included an easy to use shoe guide, so you don't miss out.

Play time





The Autumn Winter 2019 collection continues to bring British heritage and contemporary styling to children's shoes. While staying true to its brand ethos of evoking childhood memories, for AW19 it's time to get the toys out and play!

Young Soles Founder, Louise Shill, comments on the look for the new season, "Colours for the new collection have been inspired by days playing outdoors as the temperature drops and nights draw closer, creating an autumnal palette of cherry patent, chestnut brown, black, navy and brick, juxtaposed with the excitement and sparkle of seasonal red patent, deep green, silver and gold." She adds, "As a kid I loved this time of year. From wrapping up warm as the clocks went back to being scared of the dark and running home from school, to the magical wonder of Christmas and all the bright lights and vibrant colours. For the AW19 photoshoot we sourced some of our favourite toys from the 80's such as games consoles and Rubik's cubes, and got the party going with bubble gum, balloons, hula hoops and fairy lights."

Inspired by the great outdoors the AW19 collection features new fur-lined styles, "Smithy" a lace-up hiking boot with signature Young Soles EVA sole, and "Ernest" another lace-up hiking boot based on a natural crepe sole. These are joined by "Cooper" an edgy 11-hole monkey boot with lightweight EVA sole, and "Lennon" a classic Chelsea boot with a crepe sole. Adding to its growing family of sporty cup-soles new styles "Oscar", a brogue shoe, and "Ringo", a brogue boot, have also been introduced. Finally, new style "Mable", a Mary-Jane with a simple lozenge punch and vintage inspired buckle strap. Both "Mable" and long-time favourite "Penny" have been re-vamped with a contoured cushioned insole providing additional comfort for growing feet.

An Autumnal colour palette juxtaposed with sparkles from the holiday season.

**Shoes in photos left to right**

Cover: Rosie t-bar shoes in silver.

Left: Sidney brogue boots in hunter green and Rosie t-bar shoes in chestnut brown.

Top: Rosie t-bar shoes in cherry patent.



Shoes in photos left to right

- 1. Smithy fur-lined hiker boots in chestnut brown.
- 2. Dottie t-bar shoes in pea green.
- 3. Ernest fur-lined hiker boots in black.
- 4. Joey fur Wallabee boots in black suede.
- 5. Hattie monkey boots with Liberty laces in navy and chestnut brown.
- 6. Sidney brogue boots in tan.
- 7. Freddie brogue boots in oxblood.





Shoes in photos left to right:  
Ernest fur-lined hiking boots in brick, Buster brogue boots in dark brown  
and Dottie t-bar shoes in tan.



AUTUMN / WINTER 2019



Shoes in photos left to right

- 1. Penny t-bar shoes in tan and grey.
- 2. Mabel Mary Jane shoes in cherry patent.
- 3. Winston fur-lined ankle boots in black.
- 4. Sidney brogue boots in silver.
- 5. Lennon Chelsea boots in navy.
- 6. Sidney brogue boots in hunter green and Rosie t-bar shoes in chestnut brown.
- 7. Rosie t-bar shoes in red patent.
- 8. Rosie t-bar shoes in black.

# Featured in this look book:

Blending retro-cool with classic British heritage styles, our shoes are designed in East London and made in Europe using the highest quality materials. Acknowledging trends, we give them our own Young Soles twist and whether it's borrowing from childhood memories, music or a style movement, there is always inspiration to be found amongst urban British culture.



**BUSTER**  
**Brogue boots**  
 Available in sizes 22-35  
 Upper Material: Leather  
 Lining: Leather  
 Outsole: Leather/Leather  
 Colours: Black, dark brown and tan burnished



**COOPER**  
**Tall monkey boots**  
 Available in sizes 26-35  
 Upper Material: Leather  
 Lining: Leather  
 Outsole: EVA/Leather  
 Colours: Black and brick



**MABEL**  
**Mary Jane shoes**  
 Available in sizes 20-35  
 Upper Material: Leather  
 Lining: Leather  
 Outsole: Rubber  
 Colours: Black patent, cherry patent, grey burnished and tan burnished



**PENNY**  
**T-bar shoes**  
 Available in sizes 20-35  
 Upper Material: Leather  
 Lining: Leather  
 Outsole: Rubber  
 Colours: Black, cherry patent, grey burnished and tan burnished



**ROSIE**  
**T-bar shoes**  
 Available in sizes 20-40  
 Upper Material: Leather  
 Lining: Leather  
 Outsole: EVA/Leather  
 Colours: Black, black patent, blush pink patent, cherry patent, chestnut brown, damson, London red patent, mustard, navy, rose gold and silver



**DOTTIE**  
**T-bar shoes**  
 Available in sizes 22-35  
 Upper Material: Leather  
 Lining: Leather  
 Outsole: Leather/Leather  
 Colours: Navy patent, pea green, London red patent and tan burnished



**ERNEST**  
**Fur-lined hiking boots**  
 Available in sizes 24-35  
 Upper Material: Leather  
 Lining: Leather  
 Outsole: Crepe  
 Colours: Black, brick and chestnut brown



**FREDDIE**  
**Brogue boots**  
 Available in sizes 24-40  
 Upper Material: Leather  
 Lining: Leather  
 Outsole: Crepe  
 Colours: Black, damson and oxblood high shine



**SIDNEY**  
**Brogue boots**  
 Available in sizes 24-35  
 Upper Material: Leather  
 Lining: Leather  
 Outsole: EVA/Leather  
 Colours: Black, cherry, hunter green, silver and tan burnished



**SMITHY**  
**Fur-lined hiking boots**  
 Available in sizes 24-35  
 Upper Material: Leather  
 Lining: Leather  
 Outsole: EVA/Leather  
 Colours: Black and chestnut brown



**WINSTON**  
**Brogue boots**  
 Available in sizes 24-35  
 Upper Material: Leather  
 Lining: Leather  
 Outsole: EVA/Leather  
 Colours: Black and tan burnished



**HATTIE**  
**Monkey boots**  
 Available in sizes 20-35  
 Upper Material: Leather  
 Lining: Leather  
 Outsole: EVA/Leather  
 Colours: Chestnut brown and navy



**JOEY**  
**Fur Wallabee boots**  
 Available in sizes 20-40  
 Upper Material: Fur/suede  
 Lining: Leather  
 Outsole: EVA/Leather  
 Colours: Black and stone



**LENNON**  
**Chelsea boots**  
 Available in sizes 20-35  
 Upper Material: Leather  
 Lining: Leather  
 Outsole: Crepe  
 Colours: Black, navy and tan burnished

With all the features parents should expect from a child's shoe, our lasts follow the shape of the foot with a wide toe and narrow heel. Our lightweight and flexible shoes mix traditional detailing with contemporary materials, chosen for growing feet and first steps.

With styles that complement a variety of outfits, your child will look and feel like the coolest kid in town.

We love them. We think you will too.



THANK YOU

Our amazing models: Ava, Rosie and Jonnie.

Clothes featured are: The Animal Observatory, ARKET, Bobo Choses, Gloverall,  
Les Coyotes de Paris, Repose AMS, What Mother Made and Zara.

Photography by Emma Donnelly. ©2019. All rights reserved Young Soles

YOUNGSOLES.LONDON  
HELLO@YOUNGSOLES.LONDON