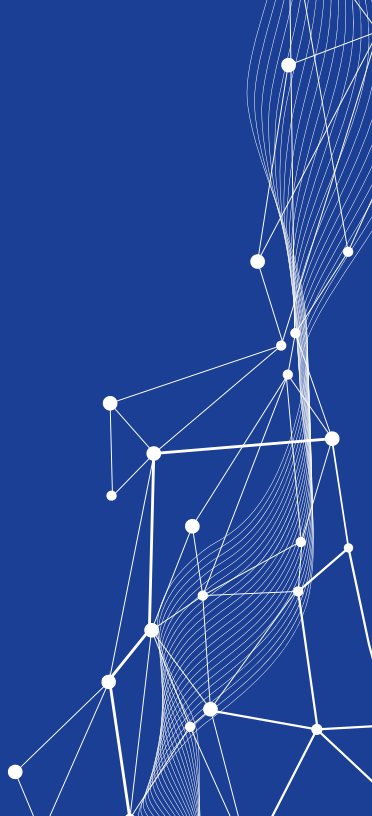


miBrite® ilustra plus

Teeth Whitening Home Kit

INSTRUCTIONS

www.miBrite.com

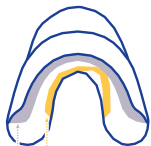




Brush teeth with a soft tooth brush & water ONLY and floss prior to whitening treatment.



Gently place your upper and lower teeth into the reservoir of the mouth tray (See diagram) with your teeth facing the soft silicone filler material. Make sure you are NOT biting into the silicone. Using fingertips, firmly press mouth tray towards your teeth approx. 1/8" into the soft silicone filler material to form the impression.



RESERVOIR:
PLACE TEETH HERE
SOFT SILICONE
FILLER MATERIAL



Take the mouth tray out of the tray case. Locate the "▲" (up sign) located on the outer top part of the mouth tray.



After the impression is formed, gently remove the mouth tray to keep the newly formed impression intact.

HOME KIT INSTRUCTIONS




Remove the cap from the syringe by pulling straight off. Place the mixing tip on the syringe and push straight on until secure. Twist the mixing tip clockwise onto the syringe to lock in place.



To begin your whitening treatment, place the mouth tray containing the whitening gel back into your mouth and wear for 12 minutes a day for up to 10 days. While completing your whitening treatment expectorate (spit) the saliva and whitening gel, if needed. Make sure the whitening gel remains within your tray and only on your teeth and does not come in contact with your gums or soft tissue. Should the gel come in contact with your soft tissue, the irritation will be temporary and last up to 20 minutes.



Apply a thin line of whitening gel similar to this width  (amount of gel for each arch is noted by short lines on syringe) in your custom impression where the reservoir meets the soft silicone filler material on the upper and lower arches of your tray (See diagram). Make sure to not overfill!



Immediately after applying whitening gel in your tray, remove the used mixing tip from syringe and discard. Replace with a new mixing tip to seal syringe before next use. **DO NOT** reuse mixing tips.



After 12 minutes, remove mouth tray and hold tray under cold running water to remove any expired and remaining gel. Place tray in tray case until next application.



Brush teeth as usual with a soft tooth brush & Nanowhite toothpaste to remove expired gel.

- Complete Steps 1 and 5-9 for each application of 12 minutes a day to desired whitening result or up to 10 days.
- Stay away from dark colored foods & beverages, smoking, tobacco chewing after whitening for a minimum of 4 hours.
- Additional INSTRUCTIONS including a Easy-To-Watch Video with Step-by-Step directions can be found at www.miBrite.com

HOME KIT INCLUDES:

- 2 - 6 ml Dual-Chamber Teeth Whitening Gel Syringes
- 1 Customizable, Reusable Upper/Lower Mouth Tray
- 10 Mixing Tips
- 1 Tray Case
- Instructions & shade guide

For information regarding our **miBrite®** Products & Warranty, go to www.miBrite.com



Distributed by:
TrendSight Oral Care, LLC.
Made in the USA
www.miBrite.com
miBrite® Customer Service (888) 404-2748 or
info@miBrite.com