

Apex

Owners Manual

CONTENTS

Contents	1
Important Safety Instructions	2
Re-cycling	3
RoHS Declaration of Conformity	3
Unpacking	4
Introduction	5
Setting up and Positioning	6
Optimum Positioning	7
Fitting the Apex 10 to a Wall or Ceiling	8
Apex 10 Fixing Configurations	9
Adjusting the Apex 10 Bracket Assembly	13
Fitting the Apex 40 to a Wall or Ceiling	14
Apex 40 Fixing Configurations	15
Grille Badge Fixing	16
Specifications	17
Guarantee and Service	18
Claims under this Guarantee	18
EC Declaration of Conformity	19
Data Protection	20
Owner Information	20

IMPORTANT SAFETY INSTRUCTIONS

1. **Read these instructions.**
2. **Keep these instructions.**
3. **Heed all warnings.**
4. **Follow all instructions.**
5. **Do not use this apparatus with water.**
6. **Clean only with a dry cloth.** Great care and attention has gone into the materials chosen to produce the Apex Series. A gentle wipe with a dry, clean cloth is all that is required to remove any dust. Treat them as you would a fine piece of furniture because that is how they have been designed.
7. **Do not block any ventilation openings.** Install in accordance with the manufacturers instructions.
8. **Do not install near any heat source,** such as radiators, heat registers, stoves, or other apparatus (including amplifiers) that produce heat.
9. **Only use attachments/ accessories specified by the manufacturer.**
10. **Use only with the cart, stand, tripod, bracket, or table** specified by the manufacturer or sold with the apparatus. When a cart is used, use caution when moving the cart/ apparatus combination to avoid injury from tip-over.



11. **Refer all servicing to qualified service personnel.** Servicing is required when the apparatus has been damaged in any way, such as power supply cord or plug is damaged, liquid has been spilled or objects have fallen onto the apparatus, the apparatus has been exposed to rain or moisture, does not operate normally or has been dropped.
12. **This apparatus shall not be exposed to dripping or splashing water** and that no object filled with liquids such as vases shall be placed on the apparatus.
13. **This exclamation point within an equilateral triangle** is intended to alert the user to the presence of important maintenance (servicing) instructions in the literature accompanying the appliance.



SAFETY INSTRUCTIONS FOR FIXING YOUR APEX LOUDSPEAKERS TO A WALL



WARNING: For safety reasons do not attempt to fix these speakers to your wall if you are unsure of your ability to provide a secure and safe fixing. You will need to determine where to fit the bracket and the structure of the wall. If unsure, please obtain the services of a competent qualified trades-person.



WARNING: Ensure that there are no gas/ water pipes, or electricity cables running behind where the wall bracket is going to be secured. Work from secure steps and avoid trailing wires.

RE-CYCLING

Correct Disposal of Waste Electrical and Electronic Equipment (WEEE) by User in Private Households in the EU.



This symbol on the product or accessories indicates that they must not be disposed of with your household wastes throughout the EU. To prevent possible harm to the environment or human health from uncontrolled waste disposal, recycle it responsibly to promote the sustainable reuse of material resources. Instead it is your responsibility to dispose of your waste equipment by handing it over to a designated collection point for recycling WEEE. The separate collection and recycling of your waste equipment will help conserve natural resources and ensure that it is recycled in a manner that protects human health and the environment.

For more specific information about where you can take your equipment for recycling please contact your local city/council office, your local waste disposal service or the outlet where you purchased your Apex product.

ROHS DECLARATION OF CONFORMITY

Directive 2002/95/EC of the European Parliament and of the Council on the reduction of the use of certain hazardous substances in electrical and electronic equipment, January 2003.



Background

The RoHS directive restricts the use of Lead (Pb), Cadmium (Cd), Mercury (Hg), hexavalent Chromium (CrVI), polybrominated biphenyl (PBB) compounds, and polybrominated diphenyl ether (PBDE) compounds in electrical and electronic equipment sold in the European Union.

UNPACKING

Due to the shape and the polished finish of the product, care must be taken when handling your new Apex Series Loudspeaker.



Care must be taken when handling the table top stand/ wall plate. This, the accessories and the grille should be removed from the packaging before removing and unpacking the loudspeaker.



Great care must be exercised at all times to ensure the driver(s) and tweeter are not damaged during unpacking and when finally sitting in the room. Any physical damage caused to the drive unit by not complying with this requirement will not be covered by warranty.

Within the packaging you will find the following:

Apex 10

- Cabinet
- Table top stand/ wall mounting plate.
- Grille in separate carton.
- Accessory pack. Inc: Short and long bolts, extension pole, adhesive feet and hex key
- Wall fixing template

Apex 40

- Cabinet (with bracket attached)
- Grille in separate carton.
- Accessory pack. Inc: Grub screws, grub screw covers, adhesive feet, badge and hex key.
- Wall fixing template

To remove the Apex products from the carton, place some protective material on the floor/ table top and having removed any loose items (Table top stand, accessory pack, grille) from the top of the packaging, carefully invert the carton. Also see the icons on the carton. Gradually pull the carton upwards to expose the underside of your Apex product. Remove fixing tape from the bag(s) and expose the cabinet.

The Apex 10 will arrive with the clamp arms, pivot and clamp screw in situ. Assemble the other components in accordance with your requirements following the guides on pages 9-12. This assembly may need to be flipped over depending on the rotation of the speaker.

The Apex 40 will arrive with the wall bracket attached to the cabinet. To secure the Apex 40 to a wall, please refer to pages 14 & 15.

INTRODUCTION

Congratulations and thank you for your purchase of the loudspeaker from the Apex Series. We are confident they will provide years of enjoyment and pleasure as only high quality components have been used throughout.

The sophisticated new Apex Series introduces revolutionary new technologies, honed to produce the highest standards of performance and build quality. A unique blend of versatility, performance and style, designed to excel in the most demanding audio or home theatre based systems.

New C-CAM® bass drivers have been specially developed for Apex, further enhanced by the introduction of the high performance RST cone geometry. All bass drivers feature vented, die-cast aluminium chassis and large diameter, high power voice coils. Using advanced FEA modelling, the 25mm C-CAM gold dome tweeter has been optimised to eclipse performance of previous designs with crisp, detailed high frequencies beyond 35kHz.

The rigid die-cast alloy cabinet, baffle and drive units are bolted together using the innovative through bolt fixing technology adopted in Monitor Audio's range topping Platinum Series. The through bolting system provides uniform mechanical pressure, which ties the whole speaker assembly together and doubles as a rigid bracing system to keep the cabinet stiff and free from resonance. These features provide enhanced mid-band clarity and resolution by limiting vibration from the driver and cabinet which could adversely add colouration and affect sound quality. All component parts are constructed from die-cast or machined metal alloys, providing extreme rigidity and assured high performance. HiVe® port design has been introduced to Apex, resulting in clean powerful, punchy bass with superior transient response.

Heavy duty bracket systems have been designed for optimum flexibility and ease of use. Die-cast or machined from heavy duty aluminium/ zinc alloy, they provide the ultimate in stability whilst offering greater flexibility with numerous installation options available.

Stylish magnetic grilles have been designed with no visible fixings, providing a simplistic and sleek appearance.

Apex is a true master-class of engineering excellence, delivering class leading performance maintaining Monitor Audios' fine heritage of award winning sound.



Apex

SETTING UP AND POSITIONING

Although position and suitability will have been considered prior to purchasing the Apex speakers, this section will guide you through optimising their positioning and set up. An illustration is provided on page 7 to show optimum positions. For instructions on assembling the brackets and securing them to a wall or ceiling, please refer to pages 8-15.

Positioning - Front Speakers

The tweeter of the centre channel is best pointed towards the listener's ears to help direct the sound and should be the first speaker you position in your home theatre room. The centre channel's job is to anchor dialogue and other on-screen sounds to the screen. Typically, As much as 60% of a movie sound track comes through the centre channel .

The centre channel can be placed either above or below, and as close to your TV screen as possible. If positioned in/ on a cabinet or sitting on top of the TV itself ensure that the front edge of the speaker is aligned with the front edge of the TV or shelf. Where possible, the height of the centre channel's tweeter from the floor, should be close to the height of your front speakers' tweeter as possible — ideally, within about 600mm.

When placing the loudspeakers on the wall around a plasma/ LCD TV, the left and right speakers ideally need to be between 22 & 30° to the left and right of the listening position, with the tweeters at approximate ear level, or at least aimed towards the listening position.

The Apex 40 can be rotated left/ right (when mounted vertically) or up/ down when mounted horizontally. The Apex 10 can be adjusted in all directions regardless of mounting position. Refer to pages 13 & 15.

Positioning - Surround Speakers

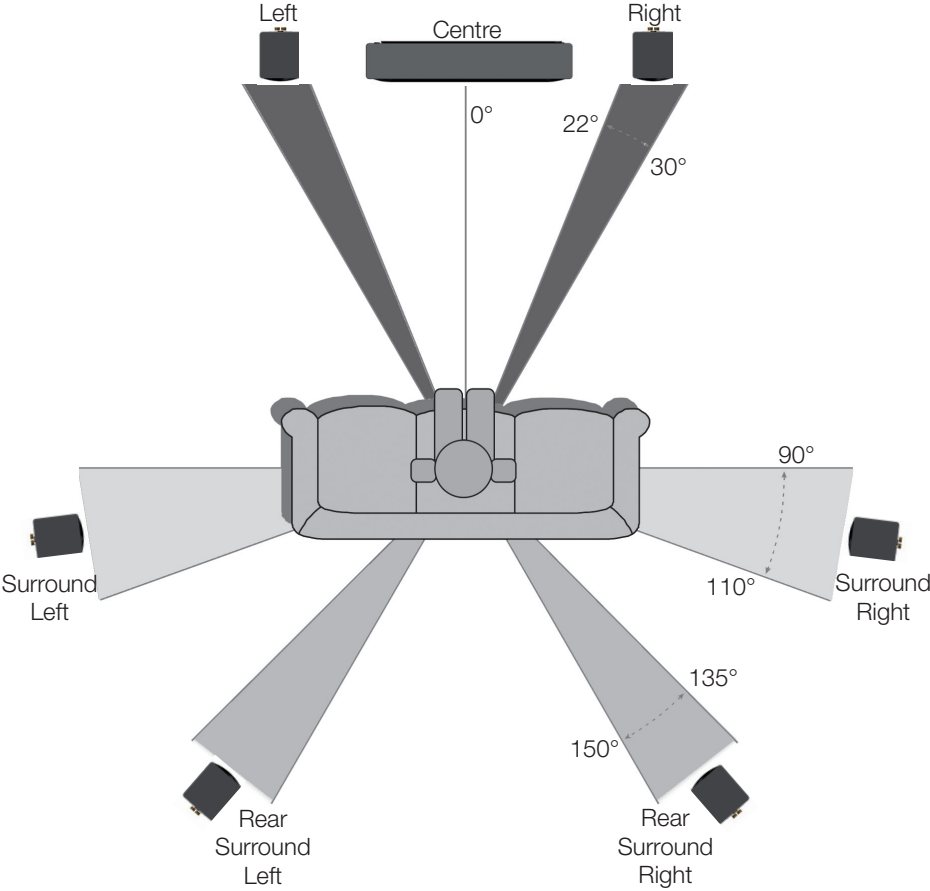
Ideally, the primary pair of surround speakers should be placed to the left and right of the listening position — either in line with it, or just behind it (90 - 110°). If it is a 6.1 channel or 7.1 channel system with more than two surround speakers, or if side placement isn't available in a 5.1 channel system, consider placement behind your listening position, facing the front of the room (135 - 150°).

Surround speakers should be placed high enough so that the drivers do not fire directly at the listening position — one rule of thumb is to place them at ear level while standing. If the surround speakers fire directly at the listening position, they can overpower your front speakers.

If the surrounds are mounted on the side walls on brackets, experiment with the direction they aim in. You may obtain good results from pointing them at the ceiling (Apex 10 only) or toward the rear corners of the room, for example.

Surround speaker placement ideal for home theatre may not necessarily be perfect for multichannel music listening, where a precisely focused rear soundstage is optimal. If both types of listening are important to you, then we recommend positioning your surround speakers as a compromise between the two.

OPTIMUM POSITIONING



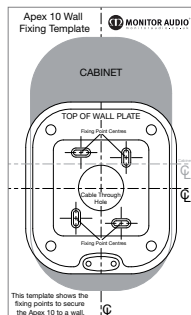
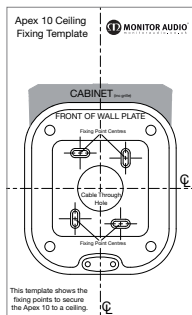
FITTING THE APEX 10 TO A WALL/ CEILING

To fix the Apex 10 to a wall or ceiling, follow the step by step instructions below. The Apex 10 can be wall mounted horizontally (for use as a centre channel), the template just needs to be rotated.

- We do not supply fixing screws or wall plugs with these products so please purchase these separately choosing appropriate length screws (40mm (1 3/4") minimum) and the correct plugs for the wall/ ceiling the loudspeaker will be fixed to.
- After the location for the Apex 10(s) has been decided, use the supplied template to mark the fixing points and cable hole. Ensure there are no electrical cables or gas/ water pipes behind the proposed location.
- With the holes marked, proceed to drill them using the correct size drill bit for the wall plugs.
- Assemble the wall plate and components. For ceiling mounting, assemble the wall plate, bracket extension pole and pivot together using the long bolts. For wall mounting, the extension pole is not required and the shorter bolts should be used. Refer to the configurations on pages 9 & 10.
- Depending on the desired angle to aim the Apex 10, it might be necessary to change the side the clamp screw is located on. In this case, loosen the screw and flip the clamp arms over so the clamp screw is on the opposite side.
- Fix the wall plate to the wall/ ceiling and press the rubber pad (with through hole) into place.
- Connect the cables to the terminals on the speaker and align the clamp arms on the cabinet with the pivot on the assembled wall plate.
- Align the speaker to the direction it will be pointing and tighten the clamp screw.
- Take a step back to ensure it is correctly aligned. If not, loosen the clamp screw slightly and adjust the angle and repeat the above step.

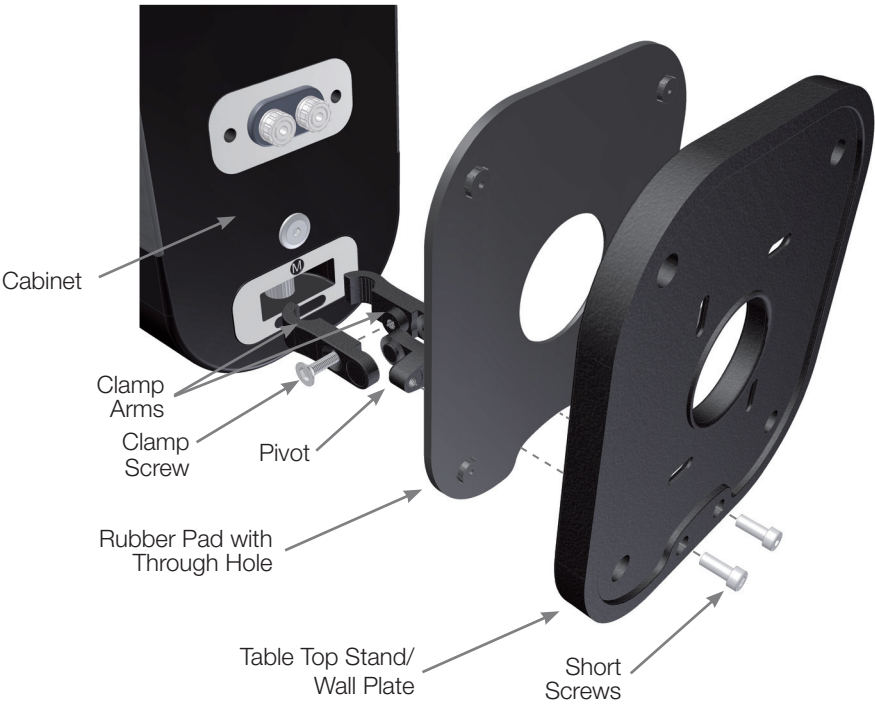


DO NOT try to adjust the angle of the speaker with the clamp screw tightened. THIS MAY CAUSE DAMAGE AND INVALIDATE YOUR WARRANTY.

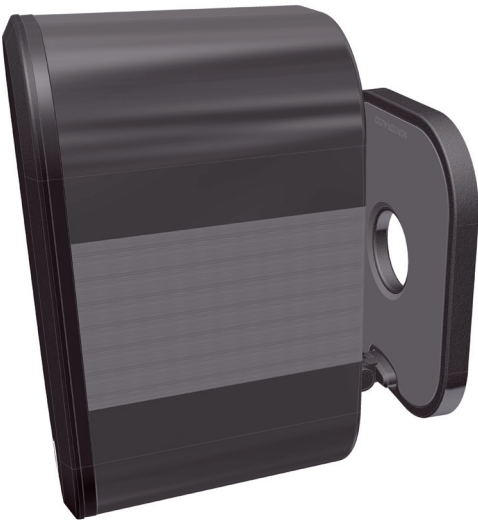


APEX 10 FIXING CONFIGURATIONS

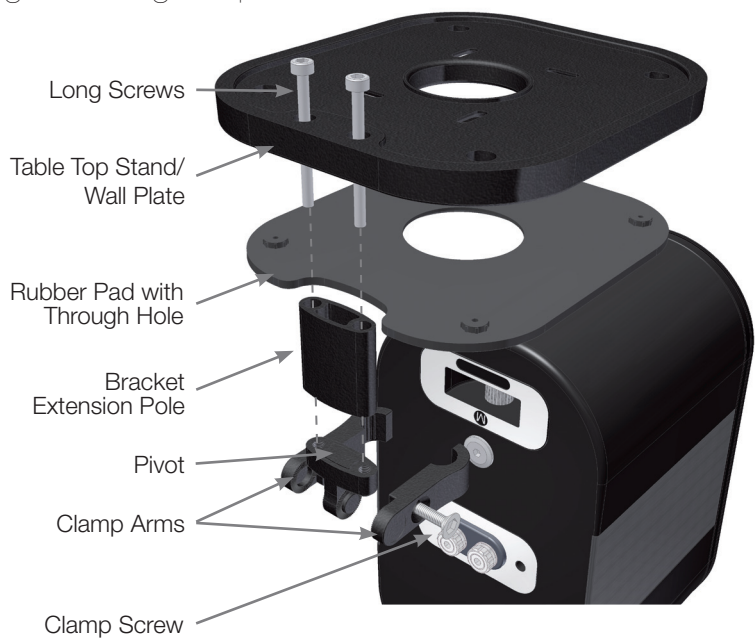
Wall Mounting - Exploded



Wall Mounting - Fixed



Ceiling Mounting - Exploded



Ceiling Mounting - Fixed



Table Mounting - Exploded

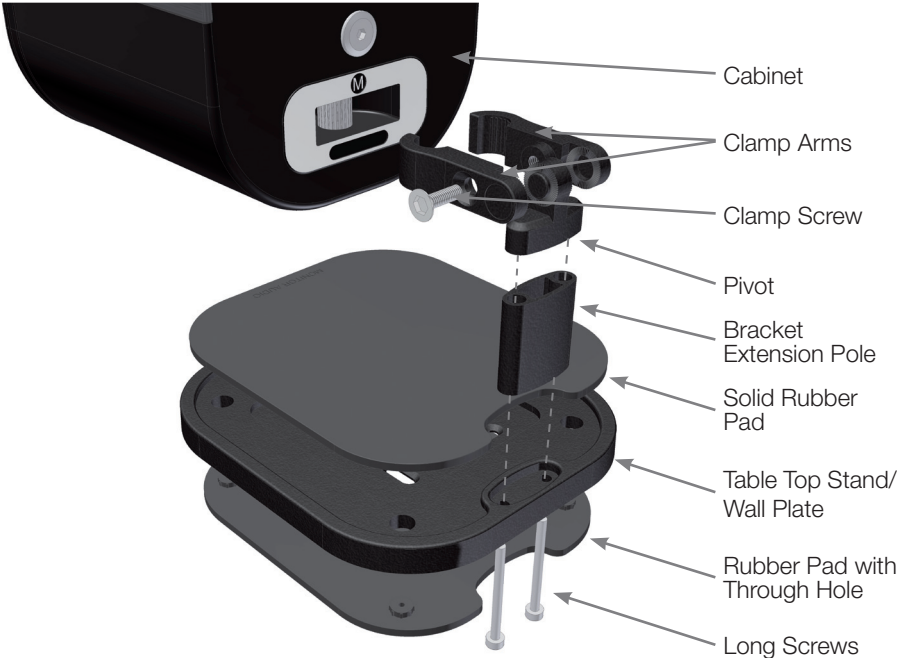
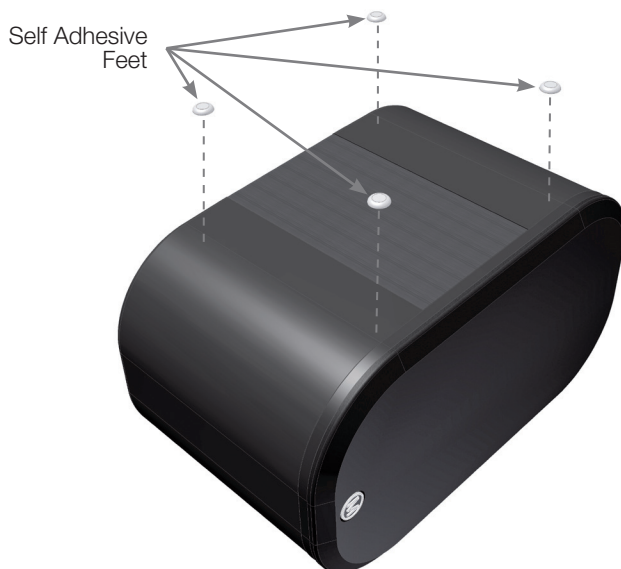


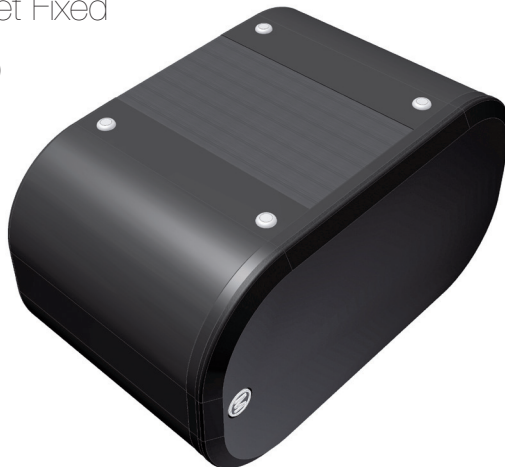
Table Mounting - Assembled



Apex 10 Horizontally on a Table/ Shelf - Exploded



Adhesive Feet Fixed (Cabinet needs to be rotated for use)



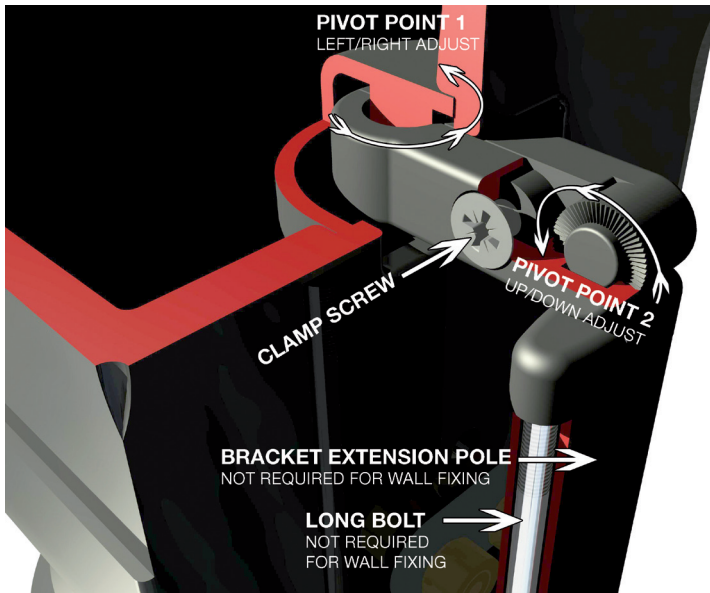
If using the Apex 10 horizontally on a table or shelf, attached the self adhesive feet as shown above to prevent movement. The badge can also be rotated.

ADJUSTING THE APEX 10 BRACKET ASSEMBLY

The clamping mechanism can be adjusted horizontally and vertically. This is achieved by taking the weight of the cabinet and loosening the clamp screw (Hex Key included). The cabinet can now be adjusted at both pivot points 1 and 2 (as shown in the illustration below). When satisfied with the positioning, tighten the screw.



DO NOT try to adjust the angle of the speaker with the clamp screw tightened. THIS MAY CAUSE DAMAGE AND INVALIDATE YOUR WARRANTY.



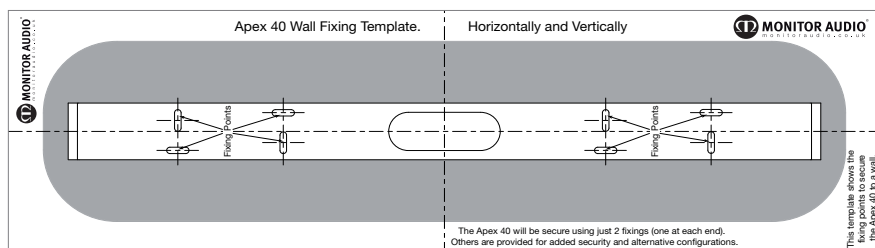
FITTING THE APEX 40 TO A WALL

To fix the Apex 40 to a wall (horizontally or vertically), follow the step by step instructions below:

- We do not supply fixing screws or wall plugs with these products so please purchase these separately choosing appropriate length screws (40mm (1 3/4") minimum) and the correct plugs for the wall/ ceiling your loudspeaker will be fixed to.
- When the location of the Apex 40(s) has been decided, use the supplied template to mark the fixing points and cable hole. The Apex 40 can be secured using just 2 fixings, but additional fixing points are incorporated if required. Ensure there are no electrical cables or gas/ water pipes behind the proposed locations.
- With the holes marked, proceed to drill them using the correct size drill bit for the wall plugs being used.
- Remove the bracket from the cabinet by loosening the grub screws at each end of the cabinet.
- Fix the bracket to the wall.
- Connect the cables to the terminals on the speaker and align the ends of the bracket with the apertures in the rear of the cabinet.
- If the cabinet is to be angled slightly, do not push the cabinet fully onto the bracket. This allows for some angular adjustment. Tighten the grub screw to take the weight of the cabinet, and take a step back to check the alignment. If correctly aligned, check the grub screw is secure and press the rubber grub screw covers into place. If further adjustment is required, loosen the grub screw slightly, adjust and re-tighten until the correct position is found. Refer to figures 2 & 3 opposite.
- If the Apex 40 is to be used pointing directly ahead, push the cabinet fully onto the bracket and tighten the grub screw. Refer to figures 4 & 5 opposite.
- If the Apex 40 is to be used with the grille on, the badge can be added to either of the locations depending on orientation. An illustration of this can be seen on page 16.



DO NOT try to adjust the angle of the speaker with the grub screw tightened. THIS MAY CAUSE DAMAGE AND INVALIDATE YOUR WARRANTY.



APEX 40 FIXING CONFIGURATIONS

Wall Mounting - Exploded

Fig. 1

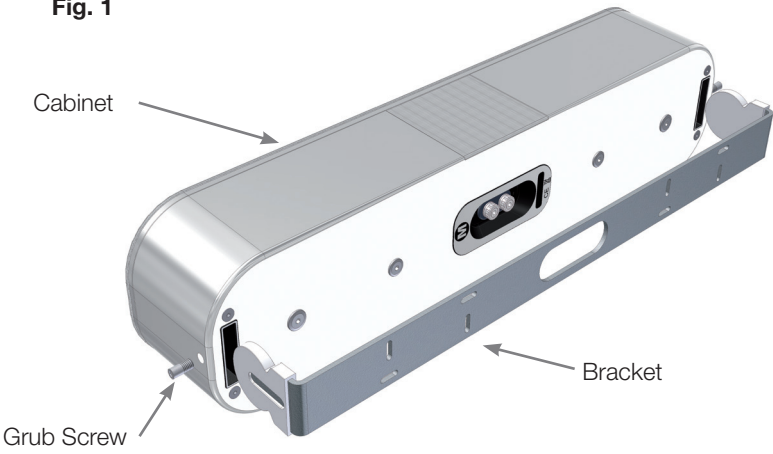


Fig. 2



Fig. 3



Fig. 4

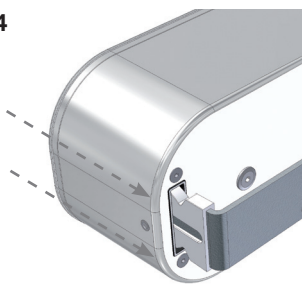


Fig. 5

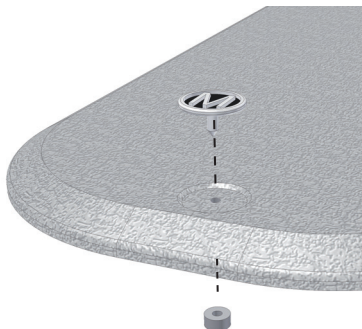


GRILLE BADGE FIXING

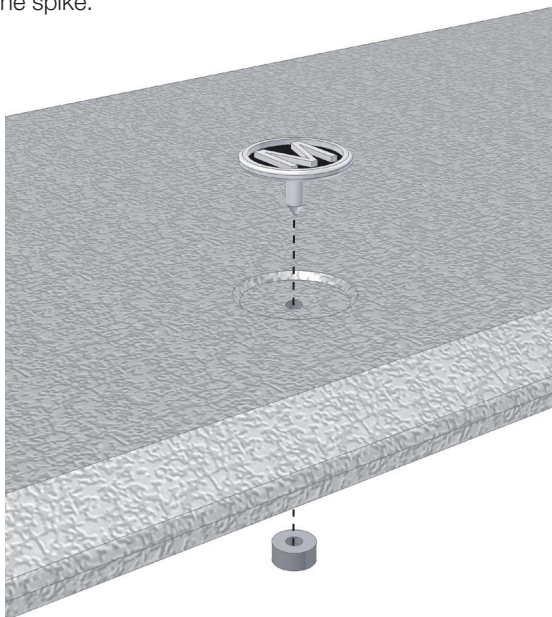
(Apex 40 only)

The Apex grille is not supplied with the badge attached. There are two potential positions for the badge depending on orientation, therefore the decision is left to the end user by providing the badge loose.

If the cabinet will be positioned vertically, use the badge location on the narrow edge of the grille (illustrated below). Press the badge through the cloth and attach the rubber grip onto the back of the spike.



If the cabinet will be positioned horizontally, use the badge location on the broader edge of the grille (illustrated below). Press the badge through the cloth and attach the rubber grip onto the back of the spike.



SPECIFICATIONS

Model	Apex 10	Apex 40
Frequency Response	60Hz – 35kHz	50Hz – 35kHz
Sensitivity (1W@1M)	87dB	90dB
Nominal Impedance	8 Ohms	8 Ohms
Power Handling Single (RMS)	100W	200W
Recommended Amp Requirements	25-100 W	50-200 W
Maximum SPL (dBA)	110.8	116.8
Bass Alignment	Bass Reflex - Single, Front Mounted HiVe Port	Bass reflex – Twin, Front Mounted HiVe Port
Drive Unit Complement	1 x 5 1/2" C-CAM cone mid-bass driver with RST Technology. 1 x 25mm C-CAM gold dome tweeter	2 x 5 1/2" C-CAM cone mid-bass drivers with RST Technology. 1 x 25mm C-CAM gold dome tweeter
Crossover Frequency	3kHz	600Hz & 3kHz
External Dimensions. mm (H x W x D)	250 x 140 x 140	610 x 140 x 100
External Dimensions. Inch (H x W x D)	9 13/16 x 5 1/2 x 5 1/2	24 x 5 1/2 x 3 15/16
Weight (each) Kg (lb)	3.95 (8 3/4)	6.85 (15 1/8)

GUARANTEE AND SERVICE

To validate your warranty please visit www.monitoraudio.co.uk within 30 days of purchase.

This equipment has been fully tested prior to dispatch from the factory. Both the craftsmanship and the performance of this product is guaranteed against manufacturing defects for the period of **five** years from the date of purchase (see conditions below), provided that the product was supplied by an authorised Monitor Audio retailer under the consumer sale agreement. (The words 'consumer sale' shall be construed in accordance with section 15 of the supply of goods act 1973). Monitor Audio accepts no responsibility for defects arising from accident, misuse, abuse, wear and tear, modification or operation outside of that specified within this instruction manual. Neither will responsibility be accepted for damage or loss occurring during transit to or from the parties claiming under this guarantee.

This guarantee covers both labour and parts. The liability of Monitor Audio is limited to the cost of repair or replacement of the defective parts (at the discretion of Monitor Audio) and under no circumstances extends to consequential losses or damage.

CLAIMS UNDER THIS GUARANTEE

The equipment should be returned in its original packaging to the original supplier where possible, or to any other authorised Monitor Audio dealer. If it is not possible to return the equipment by hand, then it should be sent carriage prepaid via a reputable carrier. If the original packing is not available replacement packaging can be purchased from Monitor Audio. If you have any difficulties complying with these requirements please contact us at the following address:

Customer Service
Monitor Audio Ltd.
Unit 2, 24 Brook Road
Rayleigh
Essex
SS6 7XJ
England

Tel: 44 (0) 1268 740580
Fax: 44 (0) 1268 740589
Internet: www.monitoraudio.co.uk
Email: info@monitoraudio.co.uk

This guarantee does not affect the statutory rights of the consumer under UK law.

EC DECLARATION OF CONFORMITY

EC Declaration of Conformity

We, Monitor Audio Ltd.
Unit 2,24 Brook Road
Rayleigh
Essex
SS6 7XJ
England



Declare in own responsibility, that the Apex Series product described in this manual is in compliance with Technical Standards/Council Directives:

(LVD) 73/23/EEC Low Voltage Directive

EN60065: 09.93+ A11:09.97 Safety requirements for mains operated electronic and related apparatus for household and similar use.

(EMC) 89/336/EEC Electro Magnetic Compatibility

EN55013: 08.90+A12:08.94+A13:12.96 Limits and methods of measurement of radio disturbance characteristics of broadcast receivers and associated equipment.

EN55020: 12.94+A11:12.96 Electro magnetic immunity of broadcast receivers and associated equipment.

EN61000-3-2: 04.95+A1:1998+A2:1998 Electro magnetic compatibility (EMC) – Part 3: Limits – Section 2: Limits for harmonic current emissions (equipment input current up to and including 16 Ampere per phase).

EN6100-3-3: 01.95 Electro magnetic compatibility (EMC) – Part 3: Limits – Section 3 : Limits of voltage fluctuations and flicker in low-voltage supply systems for equipment with rated current up and including 16 Ampere per phase.

Signed by:

A handwritten signature in black ink, appearing to be 'D.S. Hartley'.

Name: D.S. Hartley

Position: Technical Director

Company: Monitor Audio Ltd

DATA PROTECTION

We at Monitor Audio are committed to respecting the wishes and privacy of our customers. Any information you provide will be held in the strictest confidence and only used within the Monitor Audio organisation for the provision of services such as warranty claims or spare parts.

We may wish to contact you in the future to ensure you are happy with the products and standards of service we provide and to keep you up-to-date with the latest products and promotions we have to offer.

Should you wish not to be contacted by us either by post, e-mail or phone, please tick the box on the warranty card. Alternatively you can request not to be contacted in future by writing to Customer Service, at the address on the previous page.

OWNER INFORMATION

Product Details

Model

Product Serial No

Date of Purchase

Dealer Details

Dealer Name

Address

.....

e-mail address

Monitor Audio reserves the right to alter specifications without notice.



Monitor Audio Ltd.
Unit 2, 24 Brook Road
Rayleigh, Essex
SS6 7XJ
England
Tel: 01268 740580
Fax: 01268 740589
Email: info@monitoraudio.co.uk

monitoraudio.co.uk
Designed in the United Kingdom

Version 2

L o u d s p e a k e r
a n d S u b w o o f e r
I n i t i a l S e t U p
G u i d e



Introduction

Monitor Audio is a wholly British owned and managed loudspeaker designer and manufacturer. Since 1972, it has been at the leading edge of loudspeaker design and technology, perfecting the implementation of metal drivers. It is renowned for exemplary speaker cabinet construction and finish.

In 2017, Monitor Audio purchased Roksan, a brand that has created award-winning audio products in the UK for over thirty years. Extreme attention to detail and an uncompromising approach to quality has inspired a range of turntables, CD players, amplifiers and streaming systems that are enjoyed throughout the world.

Guarantee

Both the craftsmanship and the performance of this product is guaranteed against manufacturing defects for the period of **five** years from the date of purchase (see conditions in the Important Safety Instructions booklet), provided that the product was supplied by an authorised Monitor Audio retailer under the consumer sale agreement.

To help us find your warranty details within our customer database, should the need arise, please take a few minutes to register your product(s) online at: monitoraudio.com.

Subwoofer Positioning and Set Up

Initial Set Up



Leave the subwoofer unplugged from the mains until all signal cables are connected and feet attached.

Fix the feet to the bottom of the subwoofer using either the screws supplied into the pilot holes or by screwing the foot directly in to the inserts on the bottom of the cabinet depending on the model.

The subwoofer should now be sited in the most suitable position, preferably not directly in the corner of a room as this may cause excessive bass boom. Once a desirable position is achieved it is important to check if the cables are long enough to reach comfortably without being under tension. Cables should be less than 10 metres to avoid interference.



WARNING: Never connect or disconnect the RCA input/ output leads with the subwoofer switched on.

For initial setting up, put the Power Mode Switch in the 'On' position and leave the 12v trigger cable (if being used) disconnected.

Once the input cables are connected and the power mode switch is in the On position, the subwoofer can be connected to the mains power supply and switched on at the mains power switch.

Connecting to an AV Receiver

The majority of AV amplifiers have automatic setup systems. If your amp has an auto set up procedure, run this now with the volume set to around 10 - 12 o'clock, and the power mode switch in the On position.

When the auto set up is complete check the settings on the AV amp for the sub woofer to ensure they are correct. If not we would suggest adjusting accordingly.

Now play a variety of music/ film excerpts that you are familiar with gradually increasing the volume to an average listening level once you are sure everything is working correctly

Connecting to a Stereo Amplifier

Stereo L & R input may be required if using a 2-channel stereo amplifier, or an amplifier with no LFE output. Connect 2 x interconnect cables (left and right) from the amplifier to connections marked L & R.

With the pre/ integrated amplifier set to a low level, set the subwoofer up using the suggested guide below before playing any music/ test tones.

- Set the volume to around 10 o'clock
- Frequency should be set in accordance to your main speakers
- Phase to 0

Now play some familiar music and gradually adjust the volume and/ or the frequency until happy with the integration and balance of the sub woofer with the rest of the system.

Loudspeaker Positioning

2 Channel Positioning

When arranging a 2 channel system, the listening position and the loudspeakers should form an equilateral triangle. The speakers should be positioned approximately 6 - 10 feet (1.8 - 3m) apart. The ideal distance from the rear wall varies depending on the speaker and tastes, however, they need to be a minimum of 3 feet (91cm) from the side walls.

Experimentation is strongly advised when initially setting up the speakers, as environment and personal preference differ with every installation. If there is insufficient bass for example, try moving your speakers closer to a wall. The opposite approach is recommended if there is excess bass. Alternatively, if this isn't possible, the port bungs (where supplied) can help reduce the excessive bass. If stereo imaging is being lost, try 'toeing' them in slightly. The sound should appear to originate from the centre point between the speakers, not the actual speakers themselves.

AV Positioning

Please refer to the illustrations opposite for the ideal angles and positions of each speaker in your surround system. The speakers should be distanced from the wall according to the speaker and personal preference.

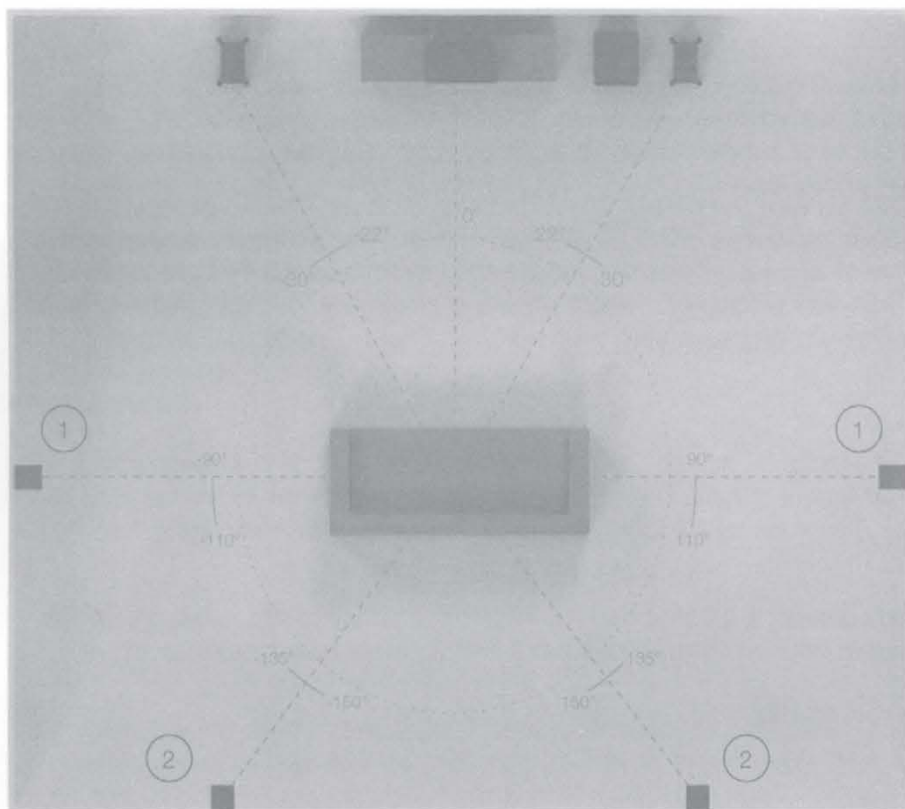
If the sound is too bass heavy or there is bass boom from the room when playing music (without a subwoofer), try moving the loudspeakers slightly further away from the wall(s). If this is not possible, try adjusting the crossover frequency settings for the speakers and/or sub or changing the subwoofer's position.

Front Speakers

The centre channel can be placed either above or below the TV screen, and as close as possible. If positioned in a cabinet or sitting on top of the TV, ensure that the front edge is aligned with the front edge of the TV or shelf. Where possible, the height of the centre channels' tweeter should be close to the height of the front speakers' tweeter — ideally, within about 600mm.

Surround Speakers

Surround speakers should be placed high enough so that the drivers do not fire directly at ear level when sitting down — one rule of thumb is to place them at ear level while standing, to avoid overpowering the front speakers. If the surrounds are mounted on brackets on the side walls, experiment with aiming them.



1. Side surround speakers

2. Rear surround speakers

A 7.1 surround system will make use of side (position 1) and rear speakers (position 2) to create a full 360° soundstage, if setting up a 5.1 system you can place your surrounds in position (1) or (2).

For information on Dolby Atmos please refer to the manual for your in ceiling speakers or the Monitor Audio web site.

Running-In Your Speakers

Run your speakers in by playing normal music at low-mid listening levels for approximately 50-70 hours play time. You may find the sound will continue to improve even after 70 hours.

This can be done naturally over time: like a fine wine the performance will improve with age.

Alternatively if you wish to run the speakers continuously on loop you can decrease the audible volume/presence by placing the speakers face-to-face so that the drivers/tweeters are directly aligned and as close as possible. Then connect the amplifier to your speakers so that one is as normal (in phase): positive to positive and negative to negative (red to red and black to black), and the other speaker out of phase: positive to negative and negative to positive inputs on the speaker.

Product Specific Instructions

For a full, range specific manual and further information on the mounting, wiring, port bungs and product information, please visit the product page at monitoraudio.com



Monitor Audio Ltd.

24 Brook Road

Rayleigh, Essex

SS6 7XJ

England

Tel: +44 (0)1268 740580

Fax: +44 (0)1268 740589

Email: info@monitoraudio.co.uk

Web: www.monitoraudio.com

**Designed & Engineered in the United Kingdom
Made In China**

Version 1, 2018

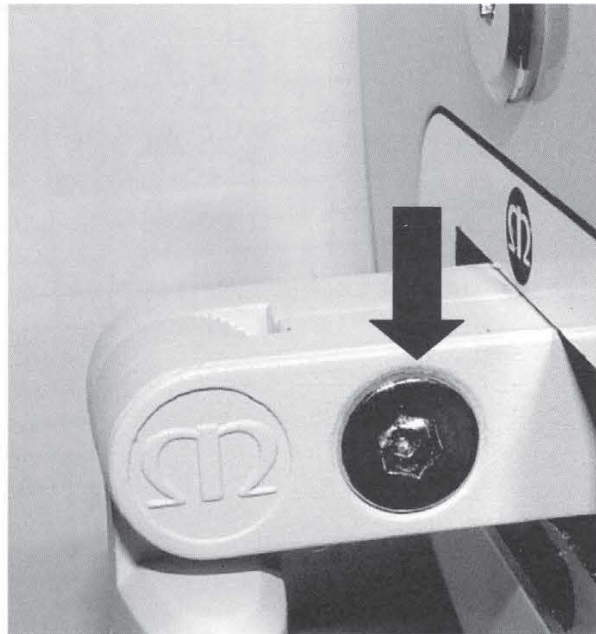
Apex 10

IMPORTANT INFORMATION!

Please ensure that AT ANY TIME when adjusting the bracket, the clamping screw (arrowed) is undone by at least 1 turn. This will avoid damaging the fine ratchet teeth.

It is IMPORTANT to hold and support the speaker during any adjustment to take its weight, before retightening the clamp screw.

Following this, the speaker may move down slightly to self align the ratchet teeth so please recheck the tightness of the clamp screw.



Thank you from the Monitor Audio Team

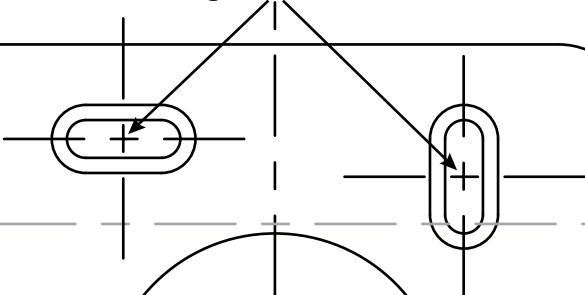
Apex 10 Wall Fixing Template



CABINET

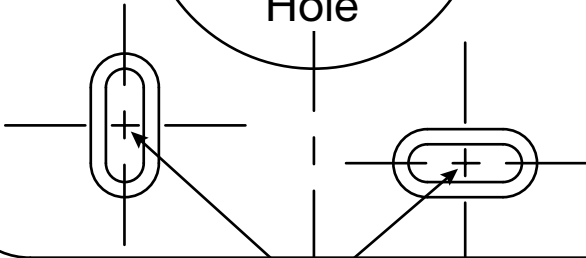
TOP OF WALL PLATE

Fixing Point Centres



Cable Through
Hole

Fixing Point Centres



Cabinet



This template shows the
fixing points to secure
the Apex 10 to a wall.



Wall Mounting

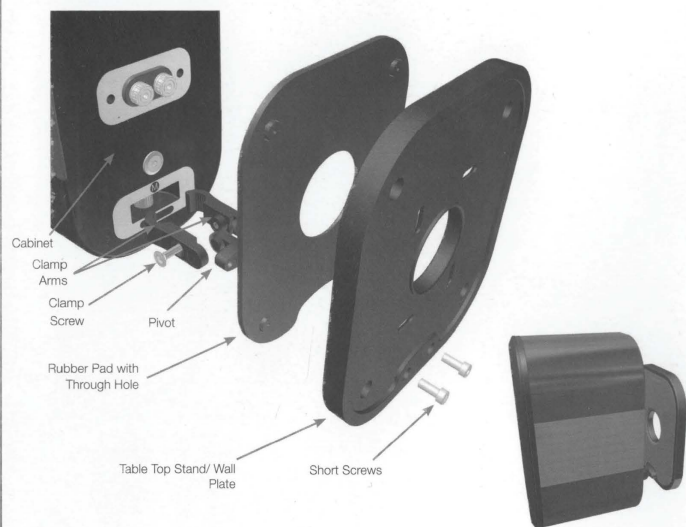
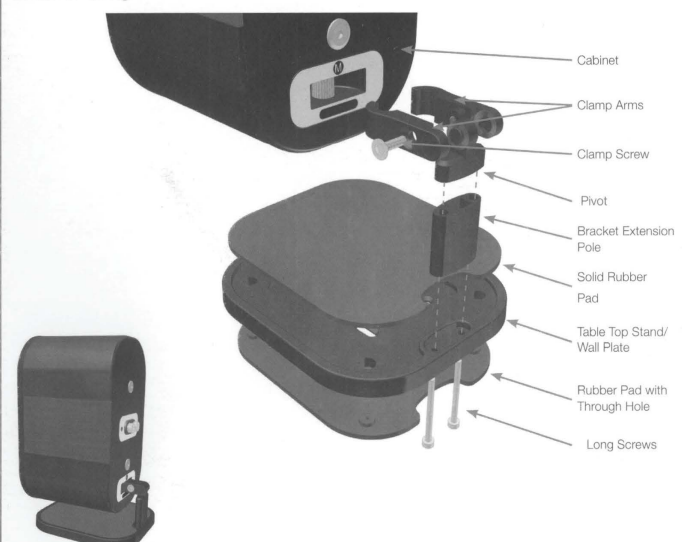
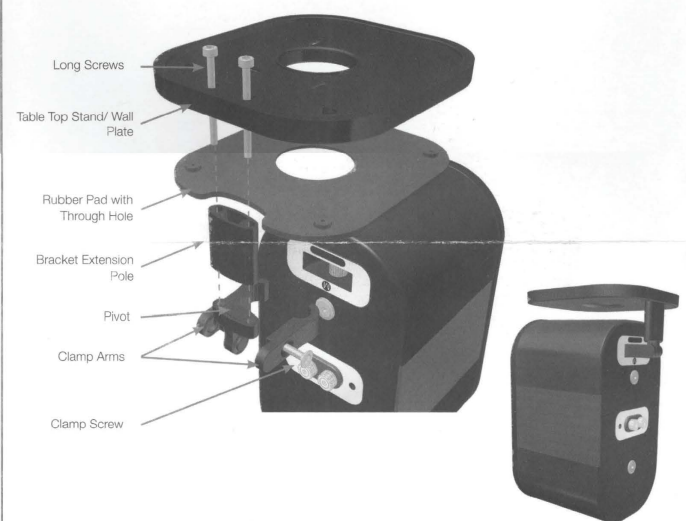


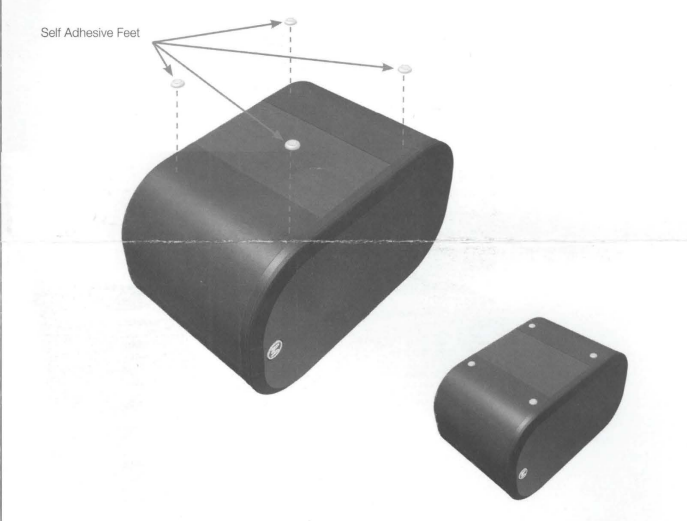
Table Mounting



Ceiling Mounting



Horizontally on a Table/ Shelf



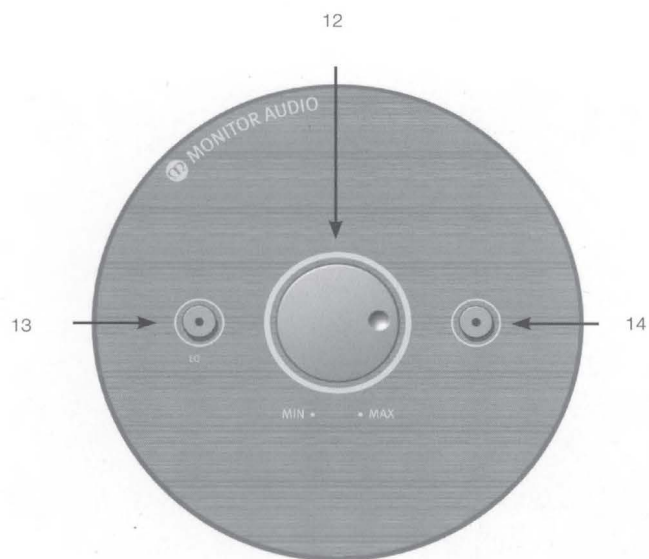
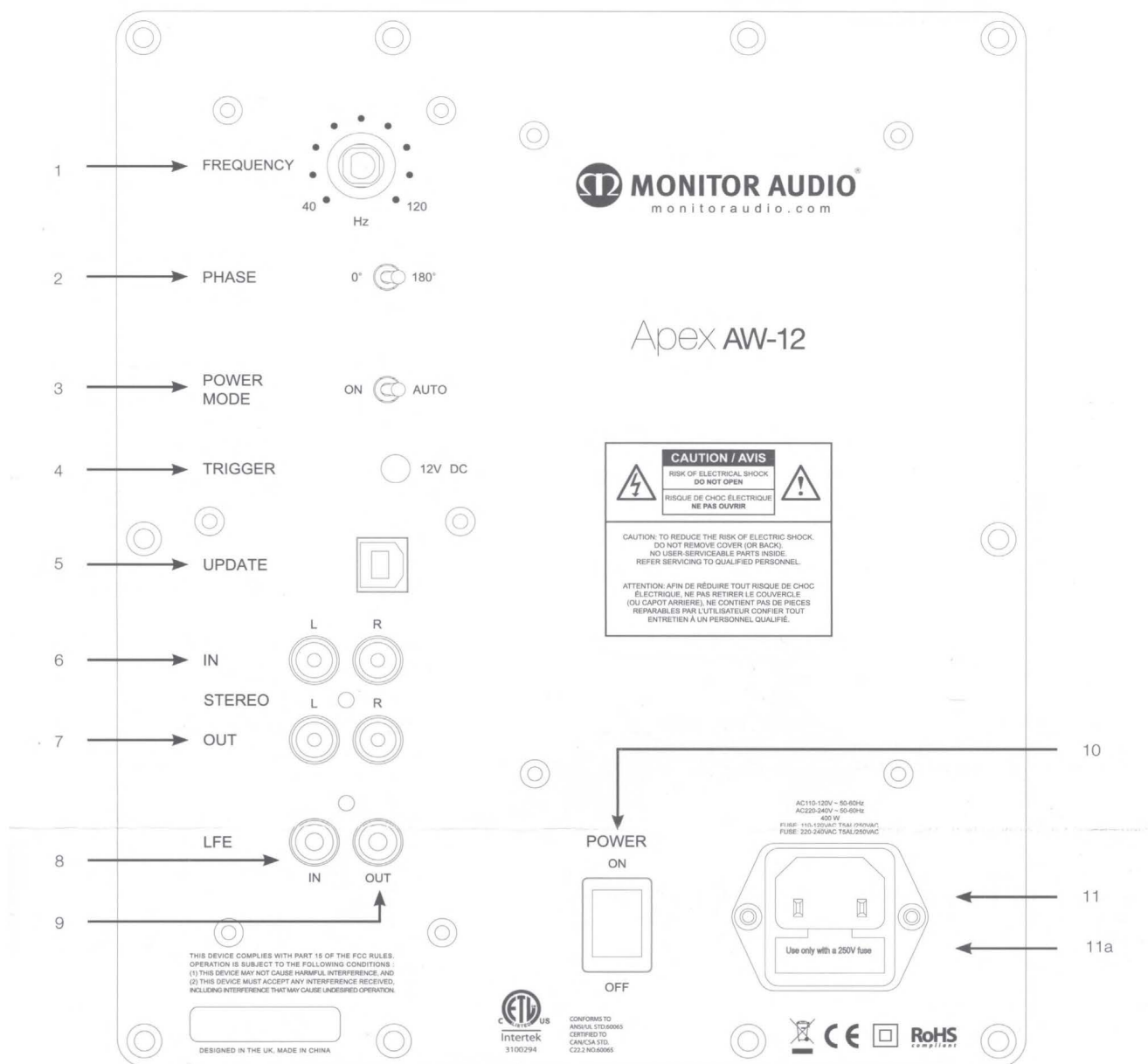
Apex 40 Fixing



Monitor Audio Ltd.
24 Brook Road
Rayleigh, Essex
SS6 7XJ
England
Tel: +44 (0)1268 740580
Fax: +44 (0)1268 740589
Email: info@monitoraudio.com
Web: monitoraudio.com

Designed & Engineered in the United Kingdom
Made In China

Version 1. 2018



1. **Crossover Frequency Control**
The crossover frequency control only operates when connected to the stereo inputs. It does not have any effect when connected to the LFE input. This control feature is used to set the upper frequency limit (low pass) of the Apex AW-12. The crossover control should be set in accordance with the size or bass output of the main/satellite speakers. Refer to the following chart as a guide to setting the crossover frequency control to the optimum position. Much will depend on the correct low frequency response of the main speakers and their position within the room. Experimentation is advisable.
2. **Phase Control Switch**
The Phase Control is used to synchronise any delay between the Apex AW-12 and main/satellite speakers. When the Apex AW-12 is in phase with the main/satellite speakers the sound should be full bodied. Sit in a normal listening position whilst adjusting the phase switch. Help from another person may be required. When set correctly the location of the subwoofer should be almost undetectable. Experimentation is recommended in order to achieve optimum results. However it should be noted that in most cases the phase control switch should be set to 0 degrees, especially when using a digital AV processor or AV receiver amplifier.
3. **Power Mode Switch with On-Auto Facility**
The Power Mode Switch has two positions: 'On'-'Auto'. With the switch in the 'On' position, the subwoofer is permanently switched on under all conditions and will need to be manually put into Standby mode. While in Standby mode, the W-12 may be woken by pressing the EQ button. In the 'Auto' position the subwoofer will automatically wake once an input signal is received and will remain on while still receiving a signal. The Apex AW-12 will switch into standby mode following a period of 20 minutes without an LFE signal. Refer to page 8 for further information.
4. **12 Volt Trigger Input ~ Centre Pin = +12Vdc**
For external power control from AV amplifier/ receiver to the W-12. Monitor Audio recommend using this function and a lead is supplied. This 12 volt signal is generated by the AV amp/receiver and tells the W-12 to turn on from standby mode. This allows a more accurately controlled auto on/off function, and is far more energy efficient.
When using the 12v trigger, the Power Mode Switch (3) must be in the **AUTO** position, for it to function correctly.
5. **USB Connector**
This is provided to update the firmware within the W-12.
6. **RCA Line Level Inputs (Stereo Left & Right)**
For connection to a 2 channel/ stereo amplifier system. Connection should be provided by a pair of high-quality signal cables from the pre-out section of an amplifier.
Note:- cable lengths should not exceed 10 metres to avoid interference from other electrical appliances.
7. **RCA Line Level Outputs (Stereo Left & Right)**
To be used to feed additional sub-woofers to the W-12 by 'daisy chain' type connection. The outputs are link out only connections and do not provide any form of filtering.
8. **LFE Input (RCA Type)**
This input is to be used when connecting the W-12 to an AV amplifier/ receiver. When using the LFE input, the crossover control is not used. This is due to the crossover function being controlled and set by the AV amplifier/ processor when it's set up procedure is run.
9. **LFE Output/ Link (RCA Type)**
To be used to feed additional sub-woofers to the W-12 by 'daisy chain' type connection. The output is a link out only connection and does not provide any form of filtering.
10. **Mains Power Switch**
The Mains Power Switch should be switched to the 'Off' position when the Apex AW-12 will not be used for extended periods. The switch must be in the 'On' position for the subwoofer to function.
WARNING: Due to the mains switch being located on the rear panel, the apparatus must be located in the open area with no obstructions to access the mains switch.
11. **IEC Mains Power Connector/ Fuse Location**
The Apex AW-12 is supplied with a two-pin mains input socket for connection to the mains supply. Use ONLY the appropriate IEC mains lead provided with the product. Also fitted is an external mains fuse. If a fuse blows during operation a spare fuse is provided within the fuse holder for replacement. If you wish to change the fuse, you can do this by removing the IEC mains lead and carefully levering out the original fuse from its holder below the IEC mains input socket (11a). If the fuse blows again it is advisable to seek help from an authorised service agent. DO NOT attempt to re-fit a further fuse as this could result in serious damage to the amplifier unit.

12. **Volume Control**
This control allows the level or volume to be adjusted in order to achieve a balanced overall sound. To use this facility you will need to play a selection of familiar music or film excerpts. Start with the volume at minimum and increase the level control until a balanced sound is established. If using an AV processor or AV receiver amplifier, the system can be adjusted by the test tone function within the set-up features. (Refer to the set up section in the AV processor or AV receiver amplifier user guide.) When the AW-12 is correctly set-up, you should not be able to identify its location easily in the room.
13. **EQ Button**
This button has multiple functions, these are: Wake the Subwoofer from standby with a single press; When operational, it cycles through three different EQ profiles.
14. **EQ LED Indicator**
This shows the selected EQ profile (while operational) and other states depending on mode and colour.

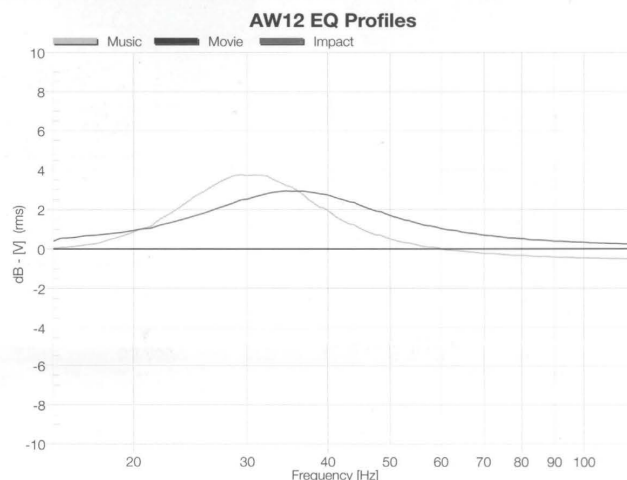
WHITE	-	Boot sequence
BLUE	-	EQ Profile 1 (Movies)
PINK	-	EQ Profile 2 (Music)
GREEN	-	EQ Profile 3 (Impact)
RED	-	Factory Reset (Static)
YELLOW & OTHER COLOUR	-	Fault mode (when flashing with other colour. See below.)

Further information on the EQ profiles can be found below.

EQ Profiles

The Subwoofer has 3 preset EQ profiles. These are EQ1 (Movies), EQ2 (Music) and EQ3 (Impact).

These profiles change the characteristics of the sound from the subwoofer. We highly recommend experimenting with the different profiles to see which most suits your room, tastes, environment, etc. An example of the different profiles do can be seen below:





Specifications

	Frequency Response	Sensitivity (1W@1M)	Nominal Impedance	Maximum SPL	Power Handling R.M.S	Recommended Amp Requirements R.M.S	Crossover Frequency	External Dimensions (including grille & terminals) (H x W x D)	Product Weight
Apex 10	60Hz - 35kHz	87dB	8	110.8 dBA	100W	25-100 W	3kHz	250 x 140 x 140mm 9 1/8" x 5 1/2" x 5 1/8"	3.95Kg (8lb 12oz)
Apex 40	50Hz - 35kHz	90dB	8	116.8 dBA	200W	50-200 W	600Hz & 3kHz	610 x 140 x 100mm 24 x 5 1/2" x 3 15/16"	6.85Kg (15lb 2oz)

	Low Frequency Limit	Upper Frequency Limit	Amplifier Output	Bass EQ Modes	Input Impedance	Mains Input Voltage (Automatically Selected)	Dimensions (including grille, amp & feet) (H x W x D)	Weight
AW 12	21Hz	Variable 40 - 120 Hz @ 24dB/ Octave	500 Watts (RMS)	Music/ Movie/ Impact	>20K Ohms	110 - 120 Vac / 220 - 240 Vac 50/60Hz	380 x 340 x 410 mm 14 9/16" x 13 1/8" x 16 1/8"	22.56 kg (49lbs 10oz)

Important Safety Instructions

1. Please read these instructions.
2. Please keep these instructions.
3. Heed all warnings.
4. Follow all instructions.
5. Do not use this apparatus with water.
6. Clean only with a dry cloth. Great care and attention has gone into the materials chosen to produce your Monitor Audio loudspeakers. A gentle wipe with a dry, clean cloth is all that is required to remove any dust. Treat them as you would a fine piece of furniture because that is how they have been designed. To clean the high gloss finishes use our "Lacquer Polish" that has been developed alongside Auto Glym. It can only be purchased from the online shop at www.monitoraudio.com (UK customers only).
7. Do not install near any heat source, such as radiators, heat registers, stoves, or other apparatus (including amplifiers) that produce heat.
8. Only use attachments/ accessories specified by Monitor Audio.
9. Use only with the cart, stand, tripod, bracket, or table specified by monitor Audio or sold with the apparatus. When a cart is used, use caution when moving the cart/ apparatus combination to avoid injury from tip-over. 
10. Refer all servicing to qualified service personnel. Servicing is required when the apparatus has been damaged in any way, such as power supply cord or plug is damaged, liquid has been spilled or objects have fallen onto the apparatus, the apparatus has been exposed to rain or moisture, does not operate normally or has been dropped.
11. This apparatus shall not be exposed to dripping or splashing water and that no object filled with liquids such as vases shall be placed on the apparatus.
12. This exclamation point within an equilateral triangle is intended to alert the user to the presence of important maintenance (servicing) instructions in the literature accompanying the appliance. 
13. No naked flame sources, such as lighted candles, should be placed on the apparatus.

14. Monitor Audio would discourage using its products in high humidity, extreme hot or cold or outdoor environments unless the product specifically advises suitability for such environments, for clarification of suitable products within the Monitor Audio range please contact a Monitor Audio representative

Re-cycling

Correct Disposal of Waste Electrical and Electronic Equipment (WEEE) by User in Private Households in the EU.

This symbol on the product or accessories indicates that they must not be disposed of with your household wastes throughout the EU. To prevent possible harm to the environment or human health from uncontrolled waste disposal, recycle it responsibly to promote the sustainable reuse of material resources. Instead it is your responsibility to dispose of your waste equipment by handing it over to a designated WEEE collection point for recycling. The separate collection and recycling of your waste equipment will help conserve natural resources and ensure that it is recycled in a manner that protects human health and the environment.



For more specific information about where you can take your equipment for recycling please contact your local city/council office, your local waste disposal service or the outlet where you purchased your Monitor Audio product.

RoHS Declaration of Conformity

Directive 2011/65/EU of the European Parliament and of the Council on the reduction of the use of certain hazardous substances in electrical and electronic equipment, June 2011.



Background

The RoHS directive restricts the use of Lead (Pb), Cadmium (Cd), Mercury (Hg), hexavalent Chromium (CrVI), polybrominated biphenyl (PBB) compounds, and polybrominated diphenyl ether (PBDE) compounds in electrical and electronic equipment sold in the European Union.

Guarantee and Service

To help us find your warranty details within our customer database, should the need arise, please take a few minutes to register your product(s) online at: monitoraudio.com.

This equipment has been fully tested prior to dispatch from the factory. Both the craftsmanship and the performance of this product is guaranteed against manufacturing defects for the period of **five years** from the date of purchase (see conditions below), provided that the product was supplied by an authorised Monitor Audio retailer under the consumer sale agreement. (The words 'consumer sale' shall be construed in accordance with section 15 of the supply of goods act 1973). Monitor Audio accepts no responsibility for defects arising from accident, misuse, abuse, wear and tear, modification or operation outside of that specified within this instruction manual. Neither will responsibility be accepted for damage or loss occurring during transit to or from the parties claiming under this guarantee.

This guarantee covers both labour and parts. The liability of Monitor Audio is limited to the cost of repair or replacement of the defective parts (at the discretion of Monitor Audio) and under no circumstances extends to consequential losses or damage.

Claims under this Guarantee

The equipment should be returned in its original packaging to the original supplier where possible, or to any other authorised Monitor Audio dealer. If it is not possible to return the equipment by hand, then it should be sent carriage prepaid via a reputable carrier. If the original packing is not available replacement packaging can be purchased from Monitor Audio.

If you have any difficulties complying with these requirements please contact us at the following address:

Customer Service
Monitor Audio Ltd.
24 Brook Road
Rayleigh
Essex, SS6 7XJ
England

Tel: +44 (0)1268 740580
Fax: +44 (0)1268 740589
Internet: www.monitoraudio.com
Email: info@monitoraudio.co.uk

This guarantee does not affect the statutory rights of the consumer under UK law.

Data Protection

We at Monitor Audio are committed to respecting the wishes and privacy of our customers. Any information you provide will be held in the strictest confidence and only used within the Monitor Audio organisation for the provision of services such as warranty claims or spare parts.

We may wish to contact you in the future to ensure you are happy with the products and standards of service we provide and to keep you up-to-date with the latest products and promotions we have to offer.

Should you wish not to be contacted by us either by post, e-mail or phone, please tick the box on the warranty form on the web site. Alternatively you can request not to be contacted in future by writing to Customer Service, at the address above.

EC Declaration of Conformity

We, Monitor Audio Ltd. (Manufacturer and Importer)
24 Brook Road
Rayleigh
Essex
SS6 7XJ
England



Declare in own responsibility, that the Monitor Audio products described in this manual is in compliance with Technical Standards/Council Directives:

(LVD) 2014/35/EU Low Voltage Directive (effective from 20 April, 2016)

EN60065: 2002+A1: 2006 Safety requirements for mains operated electronic and related apparatus for household and similar use.

(EMC) 2014/30/EU Electro Magnetic Compatibility (effective from 20 April, 2016)

EN55013: 08.90+A12:08.94+A13:12.96 Limits and methods of measurement of radio disturbance characteristics of broadcast receivers and associated equipment.

EN55020: 12.94+A11:12.96 Electro magnetic immunity of broadcast receivers and associated equipment.

EN61000-3-2: 04.95+A1:1998+A2:1998 Electro magnetic compatibility (EMC) – Part 3: Limits – Section 2: Limits for harmonic current emissions (equipment input current up to and including 16 Ampere per phase).

EN6100-3-3: 01.95 Electro magnetic compatibility (EMC) – Part 3: Limits – Section 3: Limits of voltage fluctuations and flicker in low-voltage supply systems for equipment with rated current up and including 16 Ampere per phase.

Signed by:

Name: D.S. Hartley

Position: Technical Director

Company: Monitor Audio Ltd