

# RIDING LAWN TRACTORS

100, 200, X300, X500, AND X700 Series



JOHN DEERE



**FROM MOW TO SNOW**  
View Our Snow Removal Equipment Inside



RIDING LAWN TRACTORS

# Takes the *HARD WORK* out of *LAWN WORK*

Make the most of your mowing, and more. Our lawn tractors handle any job on your to-do list. Haul, plow, bag or mulch—with our range of attachments and options, you can count on a quality cut, all year round. Each lawn tractor has different feature and slope operating limits. Never exceed those limits. Not all areas are appropriate for riding mowers.



**The Accel Deep™ mower deck.** Tough with a precision cut. The Accel Deep™ mower decks provide a superior cut quality. The deep deck design creates a vacuum force that lifts every blade of grass for a smooth, even cut. Plus, these 48- and 54-inch wide mowers are forged from a heavy-duty 10-gauge steel for maximum durability. That's the same thickness they make safes from.



**MulchControl™ Kit with One Touch Technology.** Mulch on. Mulch off. Mulch the easy way with the push of a button. Available with Accel Deep™ Mower Decks on Select Series Tractors.



**Great lawn care has gone high tech.** The John Deere MowerPlus™ app helps keep your John Deere riding lawn equipment running well and your lawn looking great. Available at the App Store® or Google Play™ store. US only.



**Cutting Height Adjuster.** Cutting height can be adjusted in ¼-in. (0.64-cm) increments for a precise, even cut.



**Twin Touch™ System.** Twin Touch™ automatic transmission lets you easily change from forward to reverse with two-pedal foot control for effortless speed and direction changes. (Available on Select Series and Signature Series Tractors.)



**30-Second Oil Change System**  
Groundbreaking. We've changed the oil change with the John Deere Easy Change™ 30-Second Oil Change System on select 100 Series models.  
\*Changing the filter removes the captured contaminants and replaces about 0.8 qt (0.76 L) of engine oil.

## X700 SIGNATURE SERIES

**Engine** – High-performance electronic fuel injected (EFI) gas engines and Final Tier 4 diesel engines offer torque and power to spare.

**Optional MulchControl™ Kit** – Mulch the easy way—with the flip of a lever.

**Steering Wheel** – Standard tilt steering adjusts to your height and delivers the ultimate in comfort.



**Air Ride Seat Option** – Effortlessly adjust the seat suspension to your liking with the flip of a switch.



**Stylish Hood** – The exclusive design provides superior cooling and durability.

**Mower Deck** – The 48-in. Accel Deep™ Mower Deck is perfect for narrow pathways and gate entrances, while our 54- and 60-in. High-Capacity decks are solid stamped out of 9-gauge steel.

**12-Volt Outlet** – Plug in a sprayer or an electric spreader.

**Tool Box** – Storage for work gloves or sunglasses to your cell phone.

**Power Steering** – Easily maneuver throughout your yard. Power steering is standard on all X700 Series.



**Tough with a precision cut.** The Accel Deep™ mower decks provide a superior cut quality. The deep deck design creates a vacuum force that lifts every blade of grass for a smooth, even cut. Plus, these 48- and 54-inch wide mowers are forged from a heavy-duty 10-gauge steel for maximum durability. That's the same thickness they make safes from.



**The Dashboard Approach.** Electronic Fuel Gauge. Engine Temperature Gauge. Tachometer with Best Cut Target Zone. An Electric Power Take-Off (PTO) engagement indicator. All at a glance and within easy reach.

# THERE'S ALWAYS SOMETHING TO DO AROUND THE YARD.

Productivity and versatility are key to how we run, too. That's why the Signature Series is engineered to till, mulch, haul, bag, plow, fertilize, seed, sweep and, of course, mow. You just need the right attachment or implement.

Adding a 3-point hitch is a great place to start. Put our heavy-duty transmission and thick C-channel frame to the test and take on the toughest yard jobs. That's how we run. Nothing runs like a Deere.

## BUMPER-TO-BUMPER 4-YEAR / 700-HOUR WARRANTY\*\*

\*\*Term limited to 4 years or 700 hours used, whichever comes first, and varies by model. See the LIMITED WARRANTY FOR NEW JOHN DEERE TURF AND UTILITY EQUIPMENT at [JohnDeere.com](http://JohnDeere.com) or [www.JohnDeere.ca/TUWarranty](http://www.JohnDeere.ca/TUWarranty) for details.



With an AutoConnect deck, attaching and removing your mower deck is easier than ever. Drive over ramps can quickly be removed, without tools, for access to mower deck.

X500 SELECT SERIES



## MULTI-TERRAIN AND MULTI-TALENTED.

The X500 Series lets you mow with precision, faster. But a quality cut is just the start of what the tractors can do. Tow a cart or mulch your lawn, negotiate muddy areas with complete confidence, and go where you need to go. Heavy-duty frames support heavy-duty work. Increase traction with foot-operated traction control. Add the optional MulchControl Kit to make feeding your lawn a snap.



**High-Back Comfortable Seat.** Features a 4-bar scissor suspension that completely lifts seat platform and soaks up impact from bumpy terrain for a smooth, comfortable ride. Standard on the X580, X584, X590.



**Easy-To-Read Display.** Displays engine speed and target zone for best cut quality.



**Traction Assist.** Locks the rear transaxle, so both rear wheels work together with maximum traction. Exceptionally effective at climbing or negotiating muddy ground.

**Hydraulic Power Steering.**

Makes 4-wheel steering even easier and provides excellent maneuverability. 12-inch (30 cm) uncut circle radius on the X584 with 54-in. mower. (Standard on the X580, X584, X590).

**Four-wheel steering.**

All four wheels on the X584 steer the tractor for ultimate trimmability.

**MulchControl™ Kit with One Touch Technology.** Available with Accel Deep™ Mower Decks on Select Series Tractors.

**Accel Deep™ Mower Decks.**

The deeper "draw" and flat top design create a better quality of cut at faster ground speeds.

**21-in. (53 cm) cut and sewn seat** with spring suspension provides a smooth comfortable ride on uneven terrain (Standard on the X580, X584, and X590).

**Control console.** Ergonomic design and color-coded for easy identification.

**X590 Electronic Throttle Control.** Instantly responds to deliver engine power and eliminate bogging down.

**iTorque™ Power System.** Provides plenty of power and torque for excellent performance in any operating condition.

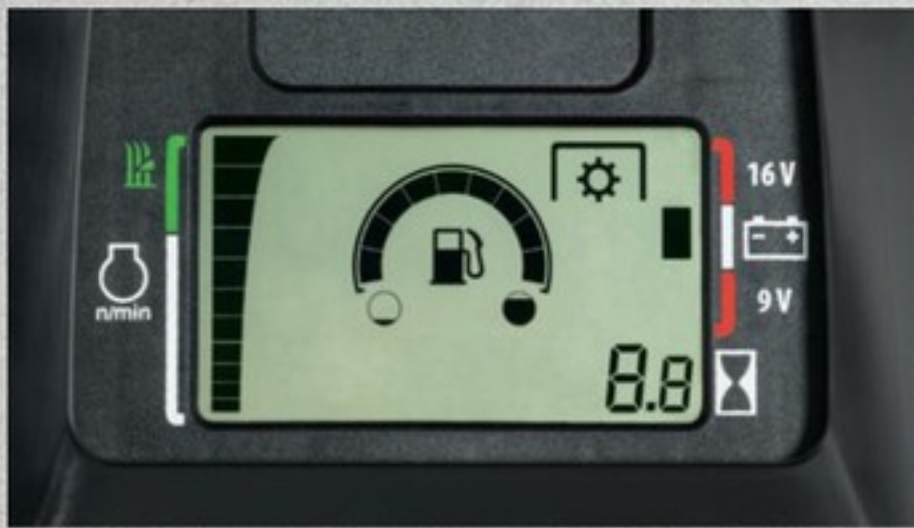
**BUMPER-TO-BUMPER**  
**4-YEAR /500-HOUR**  
**WARRANTY\*\***

\*\*Term limited to 4 years or 500 hours used, whichever comes first, and varies by model. See the LIMITED WARRANTY FOR NEW JOHN DEERE TURF AND UTILITY EQUIPMENT at JohnDeere.com or www.JohnDeere.ca/TUWarranty for details.

X300 SELECT SERIES

## PERFORMANCE MEETS POWER

Get a beautiful cut in a matter of minutes with the X380 lawn tractor. With the comfortable 18-in cut-and-sewn seat standard and optional 48- and 54-inch forged Accel Deep™ Mower Decks that cut clean, even passes at faster speeds. Add a Utility Cart to haul away most anything a lawn can throw at you.



**Easy-To-Read Display.** Displays engine speed and target zone for the best cut quality.



**Exact Adjust Deck Leveling System.** This exclusive feature allows you to conveniently level the deck from just below the seat.



**Twin Touch System.** Automatic transmission lets you easily change from forward to reverse with two-pedal foot control.





**Four-wheel steering.** Designed for ultimate trimmability. All four wheels steer the tractor instead of just the front two. Available on X354, X384, X394.



**Rear collection.** For the cleanest looking lawns, choose either a bagger attachment or the custom-engineered X350R dedicated rear-bagging tractor.



**MulchControl™ Kit with One Touch Technology.** Cut grass clippings down to size, so they are easily absorbed in your lawn. Or side discharge or bag.

## BUMPER-TO-BUMPER

---

## 4-YEAR /300-HOUR

---

## WARRANTY\*\*

\*\*Term limited to 4 years or 300 hours used, whichever comes first, and varies by model. See the LIMITED WARRANTY FOR NEW JOHN DEERE TURF AND UTILITY EQUIPMENT AT [JohnDeere.com](http://JohnDeere.com) or [www.JohnDeere.ca](http://www.JohnDeere.ca)/TUWarranty for details.

200 SERIES

## PREMIUM PERFORMANCE. WITHOUT THE PREMIUM PRICE

The 200 Series comes loaded with everything to make lawn care a labor of love. The comfort of a wide, welcoming operator station and an open, high-back seat. The performance of side-by-side forward and reverse pedals, a rip-roaring V-Twin engine and either 42-in or 48-in Accel Deep™ Mower Deck with optional MulchControl™ Kit. And to make sure the mower deck lasts as well as it cuts, the 48-inch mower is forged from 10-gauge steel. The same thickness they make safes from. The only thing you maybe won't love? Trying to decide which one's perfect for you.

**Comfortable, open-back seat** to capture breezes, keeping you cool.

**42-in. (107 cm) and 48-in. (122-cm) Accel Deep™ Mower Decks** S220 comes standard with 42-in. Accel Deep™ and S240 has the option for a 42-in. or 48-in. Accel Deep™ Mower Deck. The deep "draw" and flat top design create a quality of cut at faster ground speeds.

**Side-by-side pedals.** Side-by-side pedals. Effortless speed and direction changes.

**Large, turf-friendly tires** for a smooth ride and easy turns.

**Powerful, smooth running** 22 hp\* (16.4 kW) and 21.5 hp\* (16 kW) premium V-twin engines, the kind you find in our Select Series models.

**¼-in. height-of-cut adjustment.** Easily adjust for a precision cut.



\*The engine horsepower and torque information are provided by the engine manufacturer to be used for comparison purposes only. Actual operating horsepower and torque will be less. Refer to the engine manufacturer's web site for additional information.

# BUMPER-TO-BUMPER 3-YEAR / 200-HOUR WARRANTY\*\*

\*\*Term limited to 3 years or 200 hours used, whichever comes first, and varies by model. See the LIMITED WARRANTY FOR NEW JOHN DEERE TURF AND UTILITY EQUIPMENT AT [JohnDeere.com](http://JohnDeere.com) or [www.JohnDeere.ca/TUWarranty](http://www.JohnDeere.ca/TUWarranty) for details.



## Easy-Read Fuel Gauge At arm's reach. And beyond expectations.

Always be in the know. The easy-read fuel gauge gives confidence in having enough gas to finish the job. The fuel level is easy to see on the dashboard in bright or low light and it won't bounce around while driving. With an optional smart connector installed, the gauge updates the MowerPlus app about the fuel, battery state, and engine hours. Available on S240.



100 SERIES



## *YOUR LAWN WILL THANK YOU*

Assembled in Greeneville, TN, our 100 Series Lawn Tractors are our affordable, comfortable, easy-to-use lawn tractor line-up. Lift the hood and check out the Easy Change™ 30-Second Oil Change System, standard on several models. This all-in-one oil and oil filter\* is so easy to take off and put on, you can be done in 30 seconds, max. No mess.

No fuss. No problem. Twist. Lock. Done.

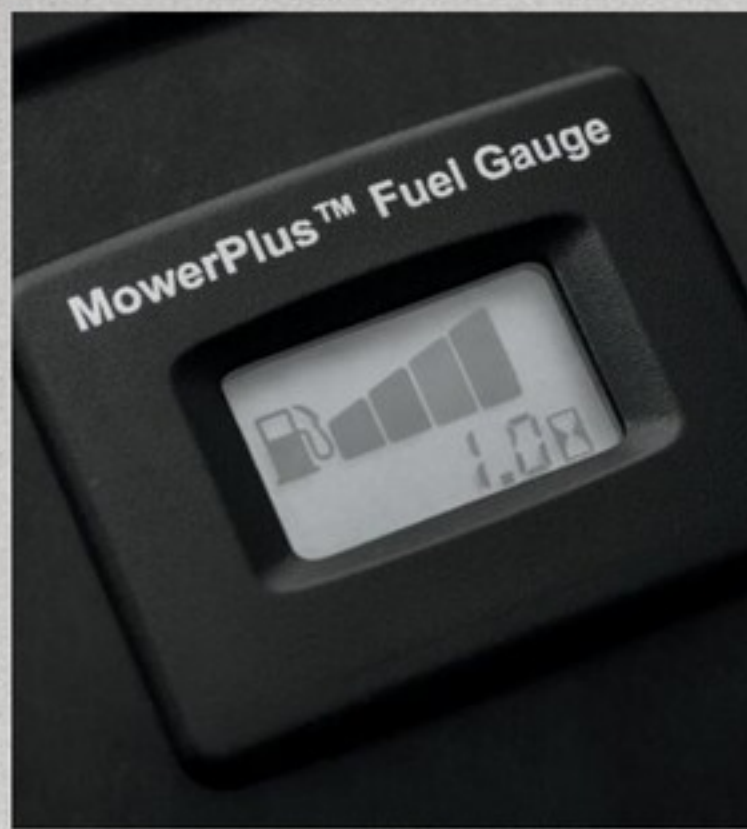
Then step on it. The two side-by-side forward and reverse pedals available on all 100 Series are made for your right foot. Now, sit down. The ergonomic operator station is welcoming. The seat, adjustable. The design of the mower deck lift is even shaped to minimize the effort required to raise or lower the deck. And that's just for starters.



ASSEMBLED IN  
GREENEVILLE,  
TENNESSEE USA.



**BUMPER-TO-BUMPER**  
**2-YEAR /120-HOUR**  
**WARRANTY\*\***



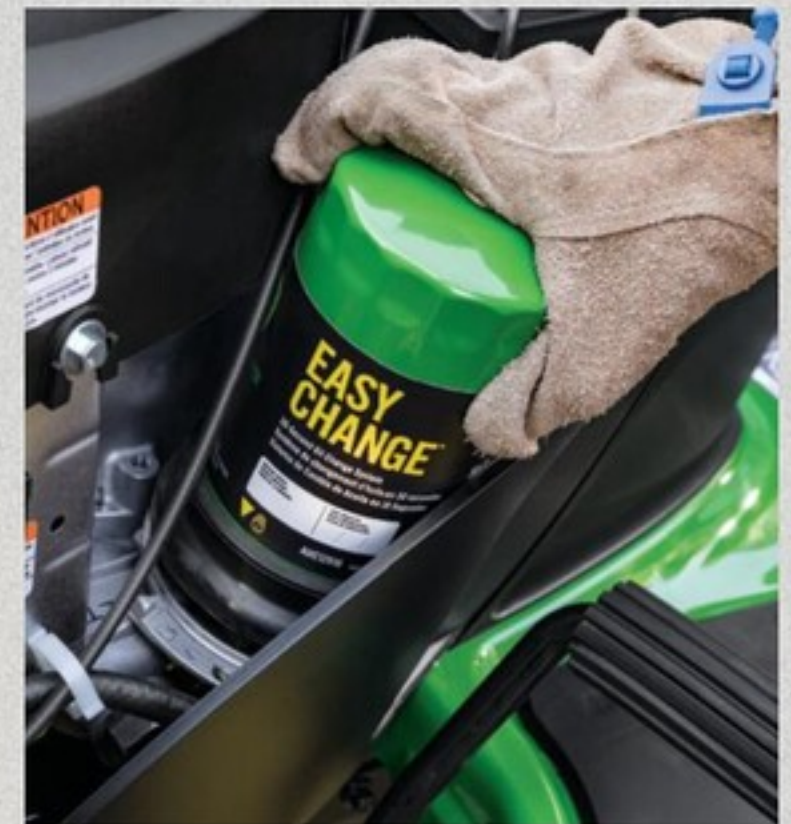
**Easy read fuel gauge.**  
(available on S120, S130, S160, S170 and S180).



**15-in lumbar seat.**  
(available on S160, S170, S180).



**Electric PTO.**  
Available on some models, provides instant engagement of mower blades. (available on all models from S130 and above).



**John Deere Easy Change™  
30-Second Oil Change System.**  
No mess. No fuss. No problem. The oil and oil filter are all-in-one.\* Twist. Lock. Done. (available on S120, S130, S160, S170, S180).



**The convenient mower deck lift lever.**  
¼-in. (0.64-cm) height-of-cut increment adjustment is as precise as ever.



**Side-by-side pedals.**  
Easily change from forward to reverse with two-pedal foot control available on all 100 Series Lawn Tractors.

\*Changing the filter removes the captured contaminants and replaces about 0.8 qt (0.76 L) of engine oil.

\*\*Term limited to 2 years or 120 hours used, whichever comes first, and varies by model. See the LIMITED WARRANTY FOR NEW JOHN DEERE TURF AND UTILITY EQUIPMENT at [JohnDeere.com](http://JohnDeere.com) or [www.JohnDeere.ca/TUWarranty](http://www.JohnDeere.ca/TUWarranty) for details.

†Assembled with foreign and domestic parts.

X700 SIGNATURE SERIES  
SNOW REMOVAL EQUIPMENT

## HEAVY SNOWFALL MEETS ITS MATCH



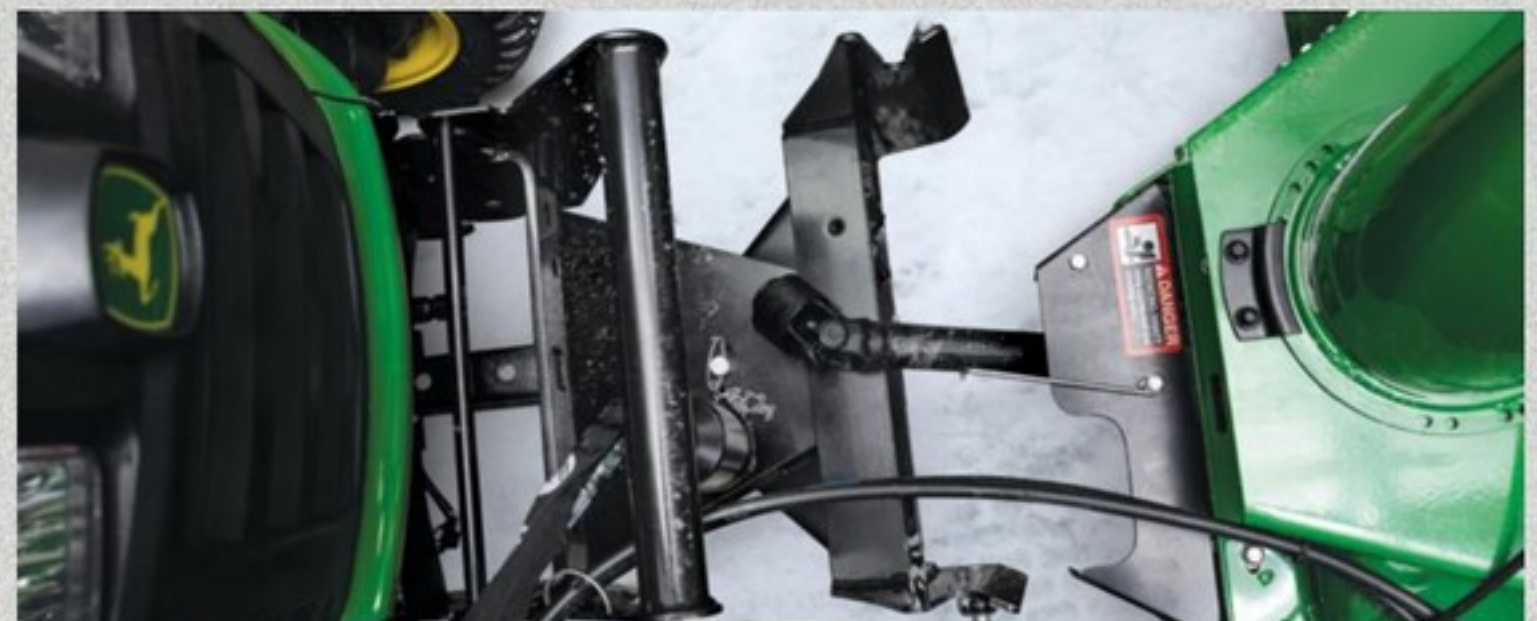
The 47- and 54-in. two-stage Quick-Hitch Snow Blowers let you easily lift and lower the blower with your tractor hydraulics. Add optional remote deflector cap to place snow with your fingertips.



Get year-round usage with the 52-in. Quick Hitch Rotary Broom or 60-in. Heavy Duty Broom. Both models feature floating heads to make a clean sweep of snow and slush-covered paths and driveways.



Optional ROPS hard-side cab, available on the X700 Series, ensures that the cold outside stays outside. Easy open and close doors latch and even lock. The front glass windshield wiper keeps your view clear during wet flurries.



The optional Quick Hitch will have you moving snow in minutes. Simply drive-in and attach the Quick-Hitch Snow Blower, Front Broom or Blade, then hook up the hydraulics to the tractor and you're done.

*X300 AND X500 SELECT SERIES  
SNOW REMOVAL EQUIPMENT*



*GO FROM MOW TO SNOW*



The X500 Select Series powerful 47-in. Snow Blower makes quick work of cleanup. A 200-degree chute rotation lets you change snow blowing direction as the wind shifts. Spout deflector helps you adjust snow throwing distance.



The X300 and X500 Select Series Tractor's 44-in. Snow Blower clears large driveways quickly. Use the tractor's foot-pedal or hydraulic lift system to raise and lower the blower for easy re-positioning when clearing wide areas. Deflector cap can be adjusted from your seat.



**Plow Markers** make maneuvering in deep snow easier. These reflective markers help provide visibility to the edge of your blade during swirling snowstorms.



Get year-round usage from the 44-in. Front Blade for the X300 series. A 3-in. (8-cm) floating action is built-in to allow the blade to follow the contour of the ground for complete cleaning action.



Heavy-duty 48-in. front blade for the X394 and X500 Series clears the way. Blade can easily be angled from the comfort of your seat, choose from 5 positions.



Optional remote blade angling kit lets you easily angle blade from the comfort of your seat, on-the-go. A helpful feature when clearing wide driveways and paths.

S100 AND S200 SERIES  
SNOW REMOVAL EQUIPMENT

CLEAR THE WAY  
EVERY SEASON



Ditch the shovel and save your back when clearing sidewalks and driveways with the **44-in. Snow Blower for S100 and S200 Series Tractors**. You can even stay seated while manually angling the chute, lifting or lowering the blower.



Don't leave your S100 or S200 Series in the garage over winter, equip it with a **46-in Front Blade** and you can push back on winter. This easy-to-use blade can be angled, lifted and lowered from the seat.

### ENHANCE YOUR EQUIPMENT



Whether you have a front blade or a snow blower, **Tire Chains** give you that extra bit of traction that's needed during slippery conditions.



Get the most out of your snow removal equipment by adding rear **Suitcase Weights**. Simply install a weight bracket and hook on the 42-lb. weights for extra traction in icy, snowy conditions.



Keep blowing snow and howling wind at bay with a **Weather Enclosure**. Zip up the doors and windows to keep Jack Frost from nipping at your nose.



Optional **Electric Implement Lift** gives you fingertip control of raising and lowering your implements.



## ATTACHMENTS

# GET READY TO GET ATTACHED.

Keep your John Deere Riding Lawn Tractor busy all year even when your lawn is covered in snow. Our incredible spectrum of attachments can practically transform your mower into a different machine. Bagging or spreading. If you've got the task, we've got the attachment.



Spreader

Whether you're spreading lime or fertilizer, you can comfortably get your lawn in perfect shape while staying seated with a spreader. Choose from broadcast tow-behind spin spreaders or tractor-mounted drop spreaders. Many models even spread sand for making winter sidewalks and paths safer.



Utility cart

No more trips back and forth when updating garden beds and working on large yard projects. Simply hook up a Utility Cart to your rear tractor hitch and start hauling mulch, flowers and more. Choose from a wide range of carts with capacities from 7 up to 21 cu ft (.20-.59 m<sup>3</sup>).



2-bag Bagger

Leave a clipping-free finish or take on those pesky fall leaves with a 2-bag, 6.5-bu (229-L) Bagger. Rear hopper opens to reveal 2 easy-to-remove bags. Handle on bottom of bags makes easier emptying. No-tools installation ensures you can get the bagger on and off yourself.

# Specifications

## X730

## X734 (4WS)

## X738 (4WD)

### POWER SYSTEMS

|              |                                  |                                  |                                  |
|--------------|----------------------------------|----------------------------------|----------------------------------|
| Model Number | FD750D EFI iTorque™ Power System | FD750D EFI iTorque™ Power System | FD750D EFI iTorque™ Power System |
| Engine Power | 25.5 hp* (19 kW)                 | 25.5 hp* (19 kW)                 | 25.5 hp* (19 kW)                 |
| Displacement | 45.5 cu in. (745 cc)             | 45.5 cu in. (745 cc)             | 45.5 cu in. (745 cc)             |
| Cooling      | Liquid                           | Liquid                           | Liquid                           |
| Cylinders    | V-Twin                           | V-Twin                           | V-Twin                           |

### SLOPE

|                           |            |            |            |
|---------------------------|------------|------------|------------|
| Slope Operating Limit**** | 18 degrees | 18 degrees | 18 degrees |
|---------------------------|------------|------------|------------|

### FUEL SYSTEM

|           |                        |                        |                        |
|-----------|------------------------|------------------------|------------------------|
| Capacity  | 5.2 U.S. gal. (19.7 L) | 5.2 U.S. gal. (19.7 L) | 5.2 U.S. gal. (19.7 L) |
| Fuel Type | Gasoline               | Gasoline               | Gasoline               |

### IGNITION

|                      |                           |                           |                           |
|----------------------|---------------------------|---------------------------|---------------------------|
| Electrical System    | Electronic                | Electronic                | Electronic                |
| Fuel Delivery System | 20 amp, regulated         | 20 amp, regulated         | 20 amp, regulated         |
|                      | Electronic fuel injection | Electronic fuel injection | Electronic fuel injection |

### TRANSMISSION

|               |                            |                            |                                      |
|---------------|----------------------------|----------------------------|--------------------------------------|
| Drive System  | Hydrostatic, 2-wheel drive | Hydrostatic, 2-wheel drive | Hydrostatic, Full-time 4-wheel drive |
| Forward Speed | 8.5 mph (13.7 km/h)        | 8.5 mph (13.7 km/h)        | 8.5 mph (13.7 km/h)                  |
| Reverse Speed | 6 mph (9.7 km/h)           | 6 mph (9.7 km/h)           | 6 mph (9.7 km/h)                     |

### BRAKES

|  |                   |                   |                   |
|--|-------------------|-------------------|-------------------|
|  | Internal wet disc | Internal wet disc | Internal wet disc |
|--|-------------------|-------------------|-------------------|

### STEERING

|  |                      |                      |                      |
|--|----------------------|----------------------|----------------------|
|  | Power, 2-wheel steer | Power, 4-wheel steer | Power, 2-wheel steer |
|--|----------------------|----------------------|----------------------|

### TURNING RADIUS

|  |                 |                 |                 |
|--|-----------------|-----------------|-----------------|
|  | 25 in. (635 mm) | 21 in. (533 mm) | 25 in. (635 mm) |
|--|-----------------|-----------------|-----------------|

### UNCUT CIRCLE RADIUS

|  |                                    |                                   |                                    |
|--|------------------------------------|-----------------------------------|------------------------------------|
|  | 28 in. (711 mm) w/ 60-in. HC Mower | 6 in. (152 mm) w/ 60-in. HC Mower | 28 in. (711 mm) w/ 60-in. HC Mower |
|--|------------------------------------|-----------------------------------|------------------------------------|

### SEAT

|  |   |   |   |
|--|---|---|---|
|  | 21 in. (533 mm) 2-piece adjustable back angle | 21 in. (533 mm) 2-piece adjustable back angle | 21 in. (533 mm) 2-piece adjustable back angle |
|--|---|---|---|

### TIRES

|       |                |                  |                                   |
|-------|----------------|------------------|-----------------------------------|
| Front | Turf 18x8.50-8 | Turf 18x7.00-8   | Heavy-Duty All Purpose 18x8.50-10 |
| Rear  | Turf 26x12-12  | Turf 26x10.50-12 | Heavy-Duty All Purpose 26x12-12   |

### LIFT SYSTEM

|  |       |       |       |
|--|-------|-------|-------|
|  | Power | Power | Power |
|--|-------|-------|-------|

### PTO

|  |                  |                  |                  |
|--|------------------|------------------|------------------|
|  | Hydraulic clutch | Hydraulic clutch | Hydraulic clutch |
|--|------------------|------------------|------------------|

### DIMENSIONS

|                               |                                   |                                    |                                   |
|-------------------------------|-----------------------------------|------------------------------------|-----------------------------------|
| Height (Seat Height)          | 54.5-in. (1384 mm)                | 54.5-in. (1384 mm)                 | 54.5-in. (1384 mm)                |
| Length, Overall               | 75 in. (1905 mm)                  | 75 in. (1905 mm)                   | 75 in. (1905 mm)                  |
| Min. Storage Width (Chute Up) | 62 in. (1575 mm) w/ 60-in. Mower  | 57.5 in. (1461 mm) w/ 54-in. Mower | 62 in. (1575 mm) w/ 60-in. Mower  |
| Wheelbase                     | 54.5 in. (1384 mm)                | 54.5 in. (1384 mm)                 | 55.7 in. (1415 mm)                |
| Weight, Approx.               | 1,078 lb (489 kg) w/ 54-in. Mower | 1,133 lb (514 kg) w/ 54-in. Mower  | 1,168 lb (530 kg) w/ 54-in. Mower |

### MOWER OPTIONS

|               |   |   |   |
|---------------|---|---|---|
| Cutting Width | Forged 48 in. Accel Deep™ Mower (1219 mm)<br>54 in. High Capacity (1372 mm)<br>60 in. High Capacity (1524 mm) | Forged 48 in. Accel Deep™ Mower (1219 mm)<br>54 in. High Capacity (1372 mm)<br>60 in. High Capacity (1524 mm) | Forged 48 in. Accel Deep™ Mower (1219 mm)<br>54 in. High Capacity (1372 mm)<br>60 in. High Capacity (1524 mm) |
|---------------|---|---|---|

### BUMPER-TO-BUMPER WARRANTY\*\*

|  |                    |                    |                    |
|--|--------------------|--------------------|--------------------|
|  | 4 year / 700 hours | 4 year / 700 hours | 4 year / 700 hours |
|--|--------------------|--------------------|--------------------|

\*\*\*\* Attachments may reduce Slope Operating Limit. See Operator's Manual.



**X739**  
(4WD, 4WS)

**X750**

**X754**  
(4WS)

**X758**  
(4WD)

|   |   |   |   |
|---|---|---|---|
| FD750D EFI iTorque™ Power System              | 3TNM74F 3-cylinder Diesel                     | 3TNM74F 3-cylinder Diesel                     | 3TNM74F 3-cylinder Diesel                     |
| 25.5 hp* (19 kW)                              | 24 hp* (17.9 kW)                              | 24 hp* (17.9 kW)                              | 24 hp* (17.9 kW)                              |
| 45.5 cu in. (745 cc)                          | 60.6 cu in. (993 cc)                          | 60.6 cu in. (993 cc)                          | 60.6 cu in. (993 cc)                          |
| Liquid  | Liquid  | Liquid  | Liquid  |
| V-Twin  | 3   | 3   | 3   |
| 18 degrees                                    | 18 degrees                                    | 18 degrees                                    | 18 degrees                                    |
| 5.2 U.S. gal. (19.7 L)                        | 5.2 U.S. gal. (19.7 L)                        | 5.2 U.S. gal. (19.7 L)                        | 5.2 U.S. gal. (19.7 L)                        |
| Gasoline                                      | Diesel  | Diesel  | Diesel  |
| Electronic                                    | N/A   | N/A   | N/A   |
| 20 amp, regulated                             | 40 amp, regulated                             | 40 amp, regulated                             | 40 amp, regulated                             |
| Electronic fuel injection                     | Indirect injection                            | Indirect injection                            | Indirect injection                            |
| Hydrostatic, Full-time 4-wheel drive          | Hydrostatic, 2-wheel drive                    | Hydrostatic, 2-wheel drive                    | Hydrostatic, Full-time 4-wheel drive          |
| 8.5 mph (13.7 km/h)                           | 8.5 mph (13.7 km/h)                           | 8.5 mph (13.7 km/h)                           | 8.5 mph (13.7 km/h)                           |
| 6 mph (9.7 km/h)                              | 6 mph (9.7 km/h)                              | 6 mph (9.7 km/h)                              | 6 mph (9.7 km/h)                              |
| Internal wet disc                             | Internal wet disc                             | Internal wet disc                             | Internal wet disc                             |
| Power, 4-wheel steer                          | Power, 2-wheel steer                          | Power, 4-wheel steer                          | Power, 2-wheel steer                          |
| 21 in. (533 mm)                               | 25 in. (635 mm)                               | 21 in. (533 mm)                               | 25 in. (635 mm)                               |
| 6 in. (152 mm) w/ 60-in. HC Mower             | 28 in. (711 mm) w/ 60-in. HC Mower            | 6 in. (152 mm) w/ 60-in. HC Mower             | 28 in. (711 mm) w/ 60-in. HC Mower            |
| 21 in. (533 mm) 2-piece adjustable back angle | 21 in. (533 mm) 2-piece adjustable back angle | 21 in. (533 mm) 2-piece adjustable back angle | 21 in. (533 mm) 2-piece adjustable back angle |
| Heavy-Duty All Purpose 18x8.50-10             | Turf 18x8.50-8                                | Turf 18x7.00-8                                | Heavy-Duty All Purpose 18X8.50-10             |
| Heavy-Duty All Purpose 26x12-12               | Turf 26x12-12                                 | Turf 26x10.50-12                              | Heavy-Duty All Purpose 26x12-12               |
| Power   | Power   | Power   | Power   |
| Hydraulic clutch                              | Hydraulic clutch                              | Hydraulic clutch                              | Hydraulic clutch                              |
| 54.5-in. (1384 mm)                            | 54.5-in. (1384 mm)                            | 54.5-in. (1384 mm)                            | 54.5-in. (1384 mm)                            |
| 75 in. (1905 mm)                              | 75 in. (1905 mm)                              | 75 in. (1905 mm)                              | 75 in. (1905 mm)                              |
| 57.5 in. (1461 mm) w/ 54-in. Mower            | 62 in. (1575 mm) w/ 60-in. Mower              | 57.5 in. (1461 mm) w/ 54-in. Mower            | 62 in. (1575 mm) w/ 60-in. Mower              |
| 55.7 in. (1415 mm)                            | 54.5 in. (1384 mm)                            | 54.5 in. (1384 mm)                            | 55.7 in. (1415 mm)                            |
| 1,255 lb (569 kg) w/ 54-in. Mower             | 1,163 lb (528 kg) w/ 54-in. Mower             | 1,218 lb (552 kg) w/ 54-in. Mower             | 1,253 lb (568 kg) w/ 54-in. Mower             |
| Forged 48 in. Accel Deep™ Mower (1219 mm)     | Forged 48 in. Accel Deep™ Mower (1219 mm)     | Forged 48 in. Accel Deep™ Mower (1219 mm)     | Forged 48 in. Accel Deep™ Mower (1219 mm)     |
| 54 in. High Capacity (1372 mm)                | 54 in. High Capacity (1372 mm)                | 54 in. High Capacity (1372 mm)                | 54 in. High Capacity (1372 mm)                |
| 60 in. High Capacity (1524 mm)                | 60 in. High Capacity (1524 mm)                | 60 in. High Capacity (1524 mm)                | 60 in. High Capacity (1524 mm)                |
| 4 year / 700 hours                            | 4 year / 700 hours                            | 4 year / 700 hours                            | 4 year / 700 hours                            |



# Specifications

## X570 / X580

## X584 / X590

## X330 / X350

## X354 (4WS) / X370

### ENGINE

|                        |                              |   |   |                             |
|------------------------|------------------------------|---|---|-----------------------------|
| Model Number           | FR730V iTorque™ Power System | FR730V iTorque™ Power System / FR730V EFI iTorque™ Power System | 44J6 Cyclonic / FR651V iTorque™ Power System            | FR651V iTorque Power System |
| Engine Power           | 24 hp* (17.9 kW)             | 24 hp* (17.9 kW) / 25.5 hp* (19.0 kW)                           | 22 hp* (16.4 kW) / 21.5 hp* (16.0 kW)                   | 21.5 hp* (16.0 kW)          |
| Displacement           | 44.3 cu in. (726 cc)         | 44.3 cu in. (726 cc)  | 44.2 cu in. (724 cc) / 44.3 cu in. (726 cc)             | 44.3 cu in. (726 cc)        |
| Cooling                | Air                          | Air   | Air   | Air                         |
| Governor               | Mechanical                   | Mechanical / Electronic throttle control                        | Mechanical  | Mechanical                  |
| Cylinder Configuration | V-twin                       | V-twin  | V-twin  | V-twin                      |
| Electrical System      | 12 volts, 12 amp regulated   | 12 volts, 12 amp regulated / 12 volts, 24 amp regulated         | 12 volts, 14 amp regulated / 12 volts, 12 amp regulated | 12 volts, 12 amp regulated  |

### SLOPE

|                         |            |            |            |            |
|-------------------------|------------|------------|------------|------------|
| Slope Operating Limit** | 15 degrees | 15 degrees | 15 degrees | 15 degrees |
|-------------------------|------------|------------|------------|------------|

### DASH DISPLAY

|            |     |     |     |     |
|------------|-----|-----|-----|-----|
| Fuel Gauge | Yes | Yes | Yes | Yes |
|------------|-----|-----|-----|-----|

### FUEL SYSTEM

|                    |                        |                        |                        |                        |
|--------------------|------------------------|------------------------|------------------------|------------------------|
| Fuel Tank Capacity | 4.4 U.S. gal. (16.7 L) | 4.4 U.S. gal. (16.7 L) | 3.3 U.S. gal. (12.5 L) | 3.3 U.S. gal. (12.5 L) |
|--------------------|------------------------|------------------------|------------------------|------------------------|

### TRANSMISSION

|               |                         |                         |                        |   |
|---------------|-------------------------|-------------------------|------------------------|---|
| Forward Speed | 0-7.2 mph (0-11.6 km/h) | 0-7.2 mph (0-11.6 km/h) | 0-5.5 mph (0-8.9 km/h) | 0-5.5 mph (0-8.9 km/h) / 0-5.8 mph (0-9.3 km/h) |
| Reverse Speed | 0-5.2 mph (0-8.4 km/h)  | 0-5.2 mph (0-8.4 km/h)  | 0-4 mph (0-6.4 km/h)   | 0-4 mph (0-6.4 km/h) / 0-3.5 mph (0-5.6 km/h)   |

### STEERING:

|            |  |   |                           |  |
|------------|--|---|---------------------------|--|
|            | Low effort, 2-wheel steer / Power, 2-wheel steer | Power, 4-wheel steer / Power, 2-wheel steer | Low effort, 2-wheel steer | Low effort, 4-wheel steer / Power, 2-wheel steer |
| Tilt Wheel | No   | Yes, 5 position                             | No                        | No   |
| Front Axle | Cast iron  | Cast iron                                   | Cast iron                 | Cast iron  |

### TURNING RADIUS

|  |                                     |                                     |                  |                                     |
|--|-------------------------------------|-------------------------------------|------------------|-------------------------------------|
|  | 16 in. (40.6 cm) / 22 in. (55.9 cm) | 19 in. (48.3 cm) / 22 in. (55.9 cm) | 16 in. (40.6 cm) | 15 in. (38.1 cm) / 22 in. (55.9 cm) |
|--|-------------------------------------|-------------------------------------|------------------|-------------------------------------|

### UNCUT CIRCLE RADIUS

|  |   |   |  |   |
|--|---|---|--|---|
|  | 23 in. (58 cm) w/48A Mower or 20 in. (51 cm) w/54A Mower / 24 in. (61 cm) w/54A Mower | 15 in. (38 cm) w/48A Mower or 12 in. (30 cm) w/54A Mower / 27 in. (69 cm) w/48A Mower or 24 in. (61 cm) w/54A Mower | 26 in. (66 cm) w/42A Mower or 21 in. (53 cm) w/48A Mower | 15 in. (38 cm) w/42A Mower a / 30 in. (76 cm) w/42A Mower |
|--|---|---|--|---|

### SEAT

|       |   |                               |                                     |                                |
|-------|---|-------------------------------|-------------------------------------|--------------------------------|
| Style | 15 in. (38.1 cm) open back with grasp / 21 in. (53.3 cm) cut and sewn | 21 in. (53.3 cm) cut and sewn | 15 in. (38.1 cm) open back w/ grasp | 18-inch (45.7 cm) cut-and-sewn |
|-------|---|-------------------------------|-------------------------------------|--------------------------------|

### LIFT SYSTEM

|      |  |           |  |                        |
|------|--|-----------|--|------------------------|
| Type | Foot pedal with adjustable spring assist / Hydraulic | Hydraulic | Foot pedal (42A Mower) / Foot pedal with spring assist (48A Mower) | Foot pedal / Hydraulic |
|------|--|-----------|--|------------------------|

### TIRES

|       |   |   |         |                    |
|-------|---|---|---------|--------------------|
| Type  | Turf (front and rear) / Turf (front), and Heavy-Duty All-Purpose (rear) | Turf (front and rear) / Turf (front), and Heavy-Duty All-Purpose (rear) | Turf    | Turf               |
| Front | 15x6.5-8 / 16x6.5-8   | 16x6.5-8  | 15x6-6  | 15x6-6             |
| Rear  | 24x12-12 / 24x12-12   | 24x9.5-12 / 24x12-12  | 20x10-8 | 20x10-10 / 20X10-8 |

### DIMENSIONS

|                |                                   |                     |                   |                   |
|----------------|-----------------------------------|---------------------|-------------------|-------------------|
| Height         | 45-in (114-3. cm)                 | 52.25-in (132.7 cm) | 46-in (117 cm)    | 49-in (124 cm)    |
| Wheelbase      | 51.2 in. (130 cm)                 | 51.2 in. (130 cm)   | 49.4 in. (125 cm) | 49.4 in. (125 cm) |
| Overall Length | 75 in. (191 cm) / 79 in. (201 cm) | 79 in. (201 cm)     | 72 in. (183 cm)   | 72 in. (183 cm)   |

|                                   |  |  |  |   |
|-----------------------------------|--|--|--|---|
| Min. Storage Width (Deflector Up) | 53.6 in. (136 cm) w/48 in. Accel Deep or 59.4 in. (151 cm) w/54 in. Accel Deep | 53.6 in. (136 cm) w/48 in. Accel Deep or 59.4 in. (151 cm) w/54 in. Accel Deep | 50.5 in. (128 cm) w/42 in. Accel Deep or 53.6 in. (136 cm) w/48 in. Accel Deep | 50.5 in. (128 cm) w/42 Accel Deep Mower |
|-----------------------------------|--|--|--|---|

|                                     |  |   |   |   |
|-------------------------------------|--|---|---|---|
| Weight, Tractor (no fuel) and Mower | 748 lb (339 kg) w/48 in. Accel Deep, 756 lb (343 kg) w/54 in. Accel Deep / 787 lb (357 kg) w/54 in. Accel Deep | 837 lb (380 kg) w/48 in. Accel Deep or 845 lb (383 kg) w/54 in. Accel Deep / 797 lb (362 kg) w/48 in. Accel Deep or 805 lb (365 kg) w/54 in. Accel Deep | 542 lb (246 kg) w/42 in. Accel Deep or 606 lb (275 kg) w/48 in. Accel Deep / 543 lb (246 kg) w/42 in. Accel Deep or 607 lb (275 kg) w/48 in. Accel Deep | 623 lb (283 kg) w/42 in. mower / 570 lb (259 kg) w/42 in. mower |
|-------------------------------------|--|---|---|---|

### MOWER DECK OPTIONS

|                       |   |  |   |                          |
|-----------------------|---|--|---|--------------------------|
|                       | 48 in. Accel Deep™ or 54 in. Accel Deep / 54 in. Accel Deep                     | 48 in. Accel Deep or 54 in. Accel Deep               | 42 in. Accel Deep or 48 in. Accel Deep / 42 in. Accel Deep, 42 in. Edge Mulch, or 48 in. Accel Deep | 42 in. Accel Deep        |
| Cutting Width /Blades | 48 in. (122 cm) 3 blades or 54 in. (137 cm) 3 blades / 54 in. (137 cm) 3 blades | 48 in. (122 cm) 3 blades or 54 in. (137 cm) 3 blades | 42 in. (107 cm) 2 blades or 48 in. (122 cm) 3 blades  | 42 in. (107 cm) 2 blades |

### BUMPER-TO-BUMPER WARRANTY\*\*

|  |                  |                  |                  |                  |
|--|------------------|------------------|------------------|------------------|
|  | 4 year/500 hours | 4 year/500 hours | 4 year/300 hours | 4 year/300 hours |
|--|------------------|------------------|------------------|------------------|

\*\* Attachments may reduce Slope Operating Limit. See Operator's Manual.

## X380

## X384 (4WS) / X390 / X394

## X350R

## S220

## S240

|  |  |  |  |  |
|--|--|--|--|--|
| FR691V iTorque Power System  | FR691V iTorque Power System  | FR651V iTorque Power System                                      | 44J6 Cyclonic                                  | FR651V   |
| 23 hp* (17.2 kW)   | 23 hp* (17.2 kW)   | 21.5 (16 kW)   | 22 hp* (16.4 kW)                               | 21.5 hp* (16.0 kW)   |
| 44.3 cu in. (726 cc)   | 44.3 cu in. (726 cc)   | 44.3 cu in. (726 cc)   | 44.2 cu in. (724 cc)                           | 44.3 cu in. (726 cc)                                       |
| Air  | Air  | Air  | Air  | Air  |
| Mechanical   | Mechanical   | Mechanical   | Mechanical                                     | Mechanical   |
| V-twin   | V-twin   | V-twin   | V-twin   | V-twin   |
| 12 volts, 12 amp regulated   | 12 volts, 12 amp regulated   | 12 volts, 12 amp regulated                                       | 12 volts, 14 amp regulated                     | 12 volts, 12 amp regulated                                 |
| 15 degrees   | 15 degrees   | 15 degrees   | 13 degrees                                     | 13 degrees   |
| Yes  | Yes  | Low fuel indicator   | Mechanical                                     | Yes  |
| 3.3 U.S. gal. (12.5 L)   | 3.3 U.S. gal. (12.5 L)   | 2 U.S. gal. (7.6 L)  | 2.4 U.S. gal. (9.1 L)                          | 2.4 U.S. gal. (9.1 L)                                      |
| 0-6.2 mph (0-10 km/h)  | 0-5.9 mph (0-9.5 km/h) / 0-6.2 mph (0-10.0 km/h) / 0-6.2 mph (0-10.0 km/h)   | 0-5.3 mph (0-8.5 km/h)   | 0-5.5 mph (0-8.9 km/h)                         | 0-5.5 mph (0-8.9 km/h)                                     |
| 0-3.5 mph (0-5.6 km/h)   | 0-3.5 mph (0-5.6 km/h)   | 0-4 mph (0-6.4 km/h)   | 0-3.2 mph (0-5.2 km/h)                         | 0-3.2 mph (0-5.2 km/h)                                     |
| Low effort, 2-wheel steer  | Low effort, 4-wheel steer / Power, 2 wheel steer / Power, 4-wheel steer  | Low effort, 2-wheel steer  | Low effort, 2-wheel steer                      | Low effort, 2-wheel steer                                  |
| No   | No/Yes/Yes   | No   | No   | No   |
| Cast iron  | Cast iron  | Cast iron  | Cast iron                                      | Cast iron  |
| 16 in. (40.6 cm)   | 15 in. (38.1 cm) / 22 in. (55.9 cm) / 19 in. (48.3 cm)   | 16.5 in. (42 cm)   | 18 in. (46 cm)                                 | 18 in. (46 cm)   |
| 21 in. (53 cm) w/48A Mower or 18 in. (46 cm) w/54A Mower                                   | 9 in. (23 cm) w/48A Mower / 24 in. (61 cm) w/48A Mower or 22 in. (56 cm) w/54A Mower / 15 in. (38 cm) w/48A Mower  | Right 23 in. (58 cm), Left 28 in. (71 cm) with 42R Mower         | 24 in. (61 cm) w/42A Mower                     | 24 in. (61 cm) w/42A Mower or 18.5 in. (47 cm) w/48A Mower |
| 18-inch (45.7 cm) cut-and-sewn   | 18-inch (45.7 cm) cut-and-sewn   | 15-inch (38.1 cm) open back w/ grasp                             | 15 in. (38.1 cm) open back                     | 15 in. (38.1 cm) open back w/ grasp                        |
| Foot pedal with spring assist  | Foot pedal with spring assist / Hydraulic / Hydraulic  | Foot pedal with spring assist                                    | Hand lever with spring assist                  | Hand lever with spring assist                              |
| Turf   | Turf   | Turf   | Turf   | Turf   |
| 15x6.5-8   | 15x6-6 / 15x6.5-8 / 15x6.5-8   | 15x6-6   | 15x6-6   | 15x6-6   |
| 22x11-10   | 20x10-10 / 22x11-10 / 22x9.5-12  | 20x10-8  | 20x10-8  | 20x10-8  |
| 49-in (124 cm)   | 49-in (124 cm)   | 46 in. (117 cm)  | 45-in (114 cm)                                 | 45-in (114 cm)   |
| 49.4 in. (125 cm)  | 49.4 in. (125 cm) / 49.4 in. (125 cm) / 51.2 in. (130 cm)  | 49.4 in. (125 cm)  | 48.9 in. (124.2 cm)                            | 48.9 in. (124.2 cm)  |
| 72 in. (183 cm)  | 72 in. (183 cm) / 72 in. (183 cm) / 74 in. (188 cm)  | 99 in. (251.4 cm)  | 75 in. (191 cm)                                | 75 in. (191 cm)  |
| 53.6 in. (136 cm) w/48 in. Accel Deep Mower or 59.4 in. (151 cm) w/54 in. Accel Deep Mower | 53.6 in. (136 cm) w/48 in. Accel Deep Mower / 53.6 in. (136 cm) w/48 in. Accel Deep Mower or 59.4 in. (151 cm) w/54 in. Accel Deep Mower / 53.6 in. (136 cm) w/48 in. Accel Deep Mower | 43.8 in. (111 cm) with 42 in. rear discharge, rear collect mower | 49 in. (124 cm) w/42A Mower                    | 49 in. (124 cm) w/42A Mower or 54 in. (137 cm) w/48A Mower |
| 651 lb (295 kg) w/48 in. mower or 659 lb (299 kg) w/54 in. mower                           | 700 lb (318 kg) w/48 in. mower / 678 lb (308 kg) w/48 in. mower or 686 lb (311 kg) w/54 in. mower / 755 lb (342 kg) w/48 in. mower   | 646 lb (293 kg) w/42 in. mower                                   | 481 lb (218 kg) w/42A or 486 lb (220 kg) w/42A | 486 lb (220 kg) w/42A or 522 lb (237 kg) w/48A             |
| 48 in. Accel Deep or 54 in. Accel Deep   | 48 in. Accel Deep / 48 in. Accel Deep or 54 in. Accel Deep / 48 in. Accel Deep   | 42 in. rear discharge and collect with standard mulch plug       | 42 in. Accel Deep                              | 42 in. Accel Deep or 48 in. Accel Deep                     |
| 48 in. (122 cm) 3 blades or 54 in. (137 cm) 3 blades                                       | 48 in. (122 cm) 3 blades / 48 in. (122 cm) 3 blades or 54 in. (137 cm) 3 blades / 48 in. (122 cm) 3 blades   | 42 in. (107 cm) 2 blades   | 42 in. (107 cm) 2 blades                       | 42 in. (107 cm) 2 blades or 48 in. (122 cm) 3 blades       |
| 4 year/300 hours   | 4 year/300 hours   | 4 year/300 hours   | 3 year/200 hours                               | 3 year/200 hours   |

# Specifications **S100** **S110** **S120 / S130** **S140** **S160** **S170 / S180**

## ENGINE

|              |                      |                    |  |                    |  |  |
|--------------|----------------------|--------------------|--|--------------------|--|--|
| Horsepower*  | 17.5 hp (13.0 kW)    | 19.0 hp (14.2 kW)  | 22 hp (16.4 kW)  | 22 hp (16.4 kW)    | 24 hp (17.9 kW)  | 24 hp (17.9 kW)  |
| Cylinders    | One                  | One                | V-twin   | V-twin             | V-twin ELS   | V-twin ELS   |
| Displacement | 30.5 cu in. (500 cc) | 33 cu in. (540 cc) | 44 cu in. (724 cc)   | 44 cu in. (724 cc) | 44 cu in. (724 cc)   | 44 cu in. (724 cc)   |
| Oil Filter   | Traditional          | Traditional        | John Deere Easy Change™<br>30-Second Oil Change<br>System*** | Traditional        | John Deere Easy Change™<br>30-Second Oil Change<br>System*** | John Deere Easy Change™<br>30-Second Oil Change<br>System*** |
| Air Filter   | Cartridge            | Cartridge          | Cartridge  | Cartridge          | Cartridge with prefilter                                     | Cartridge with prefilter                                     |

## SLOPE

|                           |            |            |            |            |            |            |
|---------------------------|------------|------------|------------|------------|------------|------------|
| Slope Operating Limit**** | 13 degrees | 13 degrees | 13 degrees | 13 degrees | 13 degrees | 13 degrees |
|---------------------------|------------|------------|------------|------------|------------|------------|

## MOWER DECK

|                        |                                |                                |                                |                                |                                |                                      |
|------------------------|--------------------------------|--------------------------------|--------------------------------|--------------------------------|--------------------------------|--------------------------------------|
| Cut Width              | 42 in. (107 cm)                | 42 in. (107 cm)                | 42 in. (107 cm)                | 48 in. (122 cm)                | 48 in. (122 cm)                | 48 in. (122 cm) /<br>54 in. (137 cm) |
| Cutting Blades         | Two                            | Two                            | Two                            | Three                          | Three                          | Three                                |
| Cut Height             | 1 to 4 in.<br>(25.4 to 102 mm) | 1 to 4 in.<br>(25.4 to 102 mm) | 1 to 4 in.<br>(25.4 to 102 mm) | 1 to 4 in.<br>(25.4 to 102 mm) | 1 to 4 in.<br>(25.4 to 102 mm) | 1 to 4 in.<br>(25.4 to 102 mm)       |
| Mower Deck Material    | Stamped steel                  | Stamped steel                  | Stamped steel                  | Stamped steel                  | Stamped steel                  | Stamped steel                        |
| Blade Engagement / PTO | Manual                         | Manual                         | Manual / Electric              | Electric                       | Electric                       | Electric                             |

## TRANSMISSION

|      |             |             |             |             |             |             |
|------|-------------|-------------|-------------|-------------|-------------|-------------|
| Type | Hydrostatic | Hydrostatic | Hydrostatic | Hydrostatic | Hydrostatic | Hydrostatic |
|------|-------------|-------------|-------------|-------------|-------------|-------------|

|                |                |                |                |                |                |                |
|----------------|----------------|----------------|----------------|----------------|----------------|----------------|
| TURNING RADIUS | 18 in. (46 cm) | 18 in. (46 cm) | 18 in. (46 cm) | 18 in. (46 cm) | 18 in. (46 cm) | 18 in. (46 cm) |
|----------------|----------------|----------------|----------------|----------------|----------------|----------------|

## ELECTRICAL SYSTEM

|          |       |       |       |       |        |        |
|----------|-------|-------|-------|-------|--------|--------|
| Capacity | 8 amp | 8 amp | 8 amp | 8 amp | 14 amp | 14 amp |
|----------|-------|-------|-------|-------|--------|--------|

## FUEL SYSTEM

|                    |                           |                           |                           |                           |                           |                           |
|--------------------|---------------------------|---------------------------|---------------------------|---------------------------|---------------------------|---------------------------|
| Fuel Gauge         | Mechanical                | Mechanical                | Yes                       | Mechanical                | Yes                       | Yes                       |
| Fuel Tank Capacity | 2.4 gal. (9.08 L)         | 2.4 gal. (9.08 L)         | 2.4 gal. (9.08 L)         | 2.4 gal. (9.08 L)         | 2.4 gal. (9.08 L)         | 2.4 gal. (9.08 L)         |
| Type of Fuel       | Gasoline                  | Gasoline                  | Gasoline                  | Gasoline                  | Gasoline                  | Gasoline                  |
| Fuel Filter        | Replaceable, in fuel line | Replaceable, in fuel line | Replaceable, in fuel line | Replaceable, in fuel line | Replaceable, in fuel line | Replaceable, in fuel line |

## TRAVEL SPEED

|         |                      |                      |                      |                      |                      |                      |
|---------|----------------------|----------------------|----------------------|----------------------|----------------------|----------------------|
| Forward | 0-5.5 mph (8.9 km/h) | 0-5.5 mph (8.9 km/h) | 0-5.5 mph (8.9 km/h) | 0-5.5 mph (8.9 km/h) | 0-5.5 mph (8.9 km/h) | 0-5.5 mph (8.9 km/h) |
| Reverse | 0-3.2 mph (5.2 km/h) | 0-3.2 mph (5.2 km/h) | 0-3.2 mph (5.2 km/h) | 0-3.2 mph (5.2 km/h) | 0-3.2 mph (5.2 km/h) | 0-3.2 mph (5.2 km/h) |

## SEAT

|        |                  |                               |                               |                               |   |   |
|--------|------------------|-------------------------------|-------------------------------|-------------------------------|---|---|
| Height | 11 in. (27.9 cm) | 15 in. (38.1 cm)<br>open back | 15 in. (38.1 cm)<br>open back | 15 in. (38.1 cm)<br>open back | 15 in. (38.1 cm)<br>w/lumbar adjustment | 15 in. (38.1 cm)<br>w/lumbar adjustment |
|--------|------------------|-------------------------------|-------------------------------|-------------------------------|---|---|

## TIRES

|       |        |        |                  |        |         |           |
|-------|--------|--------|------------------|--------|---------|-----------|
| Front | 15x6-6 | 15x6-6 | 15x6-6           | 15x6-6 | 15x6-6  | 16x6.5-8  |
| Rear  | 20x8-8 | 20x8-8 | 20x8-8 / 20x10-8 | 20x8-8 | 20x10-8 | 22x9.5-12 |

## DIMENSIONS

|                                |                   |                   |  |                   |                   |  |
|--------------------------------|-------------------|-------------------|--|-------------------|-------------------|--|
| Overall Length                 | 69.7 in (177 cm)  | 69.7 in (177 cm)  | 69.7 in. (177 cm) /<br>74.2 in. (188 cm) | 69.7 in. (177 cm) | 74.9 in. (190 cm) | 75.3 in. (191 cm)                        |
| Overall Width (deflector down) | 55.2 in. (140 cm) | 55.2 in. (140 cm) | 55.2 in. (140 cm)                        | 60.8 in. (154 cm) | 60.8 in. (154 cm) | 60.8 in. (154 cm) /<br>67.0 in. (170 cm) |
| Height                         | 40.2 in. (102 cm) | 44.5 in. (113 cm) | 44.5 in. (113 cm) / 45 in. (114 cm)      | 44.5 in. (113 cm) | 45.3 in. (115 cm) | 45.7 in. (116 cm)                        |
| NET WEIGHT (NO FUEL)           | 414 lb (188 kg)   | 414 lb (188 kg)   | 444 lb (201 kg) /<br>462 lb (210 kg)     | 468 lb (212 kg)   | 481 lb (218 kg)   | 503 lb (239 kg) /<br>526 lb (239 kg)     |

## MISCELLANEOUS

|                     |                   |                   |                     |                   |                 |                 |
|---------------------|-------------------|-------------------|---------------------|-------------------|-----------------|-----------------|
| Cruise Control      | No                | No                | Yes                 | No                | Yes             | Yes             |
| Front Bumper        | Optional          | Optional          | Optional / Standard | Standard          | Standard        | Standard        |
| Steering Wheel      | Standard, 12 in.  | Standard, 12 in.  | Standard, 12 in.    | Standard, 12 in.  | Deluxe, 14 in.  | Deluxe, 14 in.  |
| Storage Compartment | Storage, no cover | Storage, no cover | Storage w/cover     | Storage, no cover | Storage w/cover | Storage w/cover |

|                             |                    |                    |                    |                    |                    |                    |
|-----------------------------|--------------------|--------------------|--------------------|--------------------|--------------------|--------------------|
| BUMPER-TO-BUMPER WARRANTY** | 2 year / 120 hours | 2 year / 120 hours | 2 year / 120 hours | 2 year / 120 hours | 2 year / 120 hours | 2 year / 120 hours |
|-----------------------------|--------------------|--------------------|--------------------|--------------------|--------------------|--------------------|

\* The engine horsepower and torque information are provided by the engine manufacturer to be used for comparison purposes only. Actual operating horsepower and torque will be less. Refer to the engine manufacturer's web site for additional information.

\*\* Term limited to years or hours used, whichever comes first, and varies by model. See the LIMITED WARRANTY FOR NEW JOHN DEERE TURF AND UTILITY EQUIPMENT at JohnDeere.com or www.JohnDeere.ca/TUWarranty for details.

\*\*\* Changing the filter removes the captured contaminants and replaces about 0.8 qt (0.76 L) of engine oil.

\*\*\*\* Attachments may reduce Slope Operating Limit. See Operator's Manual.

# Attachments

**X700 SERIES    X500 SERIES    X300 SERIES    200 SERIES    100 SERIES**

## SNOW EQUIPMENT

|                                 |   |                |   |   |   |
|---------------------------------|---|----------------|---|---|---|
| 52-in. Quick-Hitch Rotary Broom | X |                |   |   |   |
| 60-in. Heavy-Duty Rotary Broom  | X |                |   |   |   |
| 44-in. Snow Blower              |   | X <sup>Δ</sup> | X | X | X |
| 47-in. Snow Blower              |   | X <sup>Δ</sup> |   |   |   |
| 47-in. Quick-Hitch Snow Blower  | X |                |   |   |   |
| 54-in. Quick-Hitch Snow Blower  | X |                |   |   |   |

## FRONT BLADES

|                                |   |   |                |   |   |
|--------------------------------|---|---|----------------|---|---|
| 44-in. Front Blade             |   |   | X              |   |   |
| 46-in. Front Blade             |   |   |                | X | X |
| 48-in. Front Blade             |   | X | X <sup>Δ</sup> |   |   |
| 54-in. Quick-Hitch Front Blade | X |   |                |   |   |
| 60-in. Quick-Hitch Front Blade | X |   |                |   |   |

## MATERIAL COLLECTION SYSTEMS

|                               |   |   |                |   |   |
|-------------------------------|---|---|----------------|---|---|
| 2-bag (6.5-bu) Rear Bagger    |   |   |                | X | X |
| 2-bag (7-bu) Rear Bagger      |   |   | X <sup>Δ</sup> |   |   |
| 3-bag (14-bu) Rear Bagger     | X | X |                |   |   |
| MC519 (19-bu) Power Flow Cart | X | X | X <sup>Δ</sup> |   |   |
| Front Thatcher                | X | X | X              |   |   |

## WEATHER ENCLOSURES AND CANOPY

|                    |   |   |                |   |   |
|--------------------|---|---|----------------|---|---|
| Weather Enclosure  | X | X | X <sup>Δ</sup> | X | X |
| Sun Canopy         |   | X | X <sup>Δ</sup> | X | X |
| ROPS Hard-Side Cab | X |   |                |   |   |

## REAR MOUNTED ATTACHMENTS

|                                       |   |   |                |   |   |
|---------------------------------------|---|---|----------------|---|---|
| Bucket Holder                         | X | X | X <sup>Δ</sup> | X | X |
| Spreader (Mounted)                    | X | X | X <sup>Δ</sup> |   |   |
| Frontier BB2048L Box Blade            | X |   |                |   |   |
| Frontier RB2060L 5 Ft. Rear Blade     | X |   |                |   |   |
| Frontier LR2060L 5 Ft. Landscape Rake | X |   |                |   |   |
| 647 540 PTO 3-pt. Tiller              | X |   |                |   |   |

## SPRAYERS

|                           |   |   |                |   |   |
|---------------------------|---|---|----------------|---|---|
| 15 U.S. Gallon Tow-Behind | X | X | X              | X | X |
| 25 U.S. Gallon Tow-Behind | X | X | X              | X | X |
| 45 U.S. Gallon Tow-Behind | X | X |                |   |   |
| 60 U.S. Gallon Tow-Behind | X | X |                |   |   |
| 15 U.S. Gallon Mounted    |   |   |                | X | X |
| 25 U.S. Gallon Mounted    | X | X | X <sup>Δ</sup> |   |   |
| 45 gallon 3-point         | X |   |                |   |   |

## TOW-BEHIND EQUIPMENT

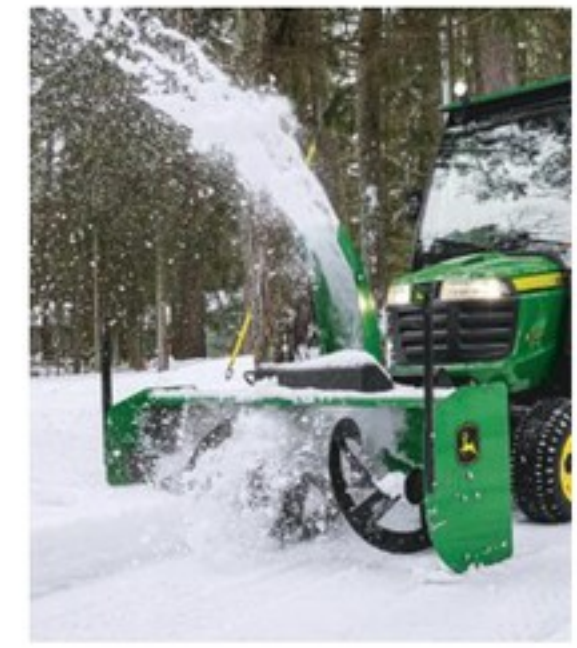
|   |   |   |   |   |   |
|---|---|---|---|---|---|
| 40-in. Thatcherator                     | X | X | X | X | X |
| 36-in. Lawn Roller                      | X | X | X | X | X |
| 48-in. Wide Steel Roller                | X | X |   |   |   |
| 40-in. Plug Aerator/Thatcher Multi-Tool | X | X | X | X | X |
| 40-in. Spiker Aerator                   | X | X | X | X | X |
| 40-in. Aerator/Spreader                 | X | X | X | X | X |
| 42-in. Lawn Sweeper                     | X | X | X | X | X |
| 44-in. Lawn Sweeper                     | X | X | X | X | X |
| 40-in. Plug Aerator                     | X | X | X | X | X |
| 48-in. Plug Aerator                     | X | X |   |   |   |
| Broadcast Spreaders                     | X | X | X | X | X |

## UTILITY CARTS\*\*

|                               |   |   |   |   |   |
|-------------------------------|---|---|---|---|---|
| 7P Utility Cart               | X | X | X | X | X |
| 8Y Utility Cart               | X | X | X | X | X |
| 10P Utility Cart              | X | X | X | X | X |
| 10PX Utility Cart             | X | X | X | X | X |
| 13 Steel Utility Cart         | X | X | X | X | X |
| 16YS Swivel Poly Utility Cart | X | X | X | X | X |
| 17P Utility Cart              | X | X | X | X | X |
| 18 Steel Utility Cart         | X | X | X |   |   |
| 21 Steel Utility Cart         | X | X | X |   |   |
| Tractor Shovel 40-in.         |   | X | X |   |   |
| 54-inch Tractor Shovel        | X |   |   |   |   |

<sup>Δ</sup> Not all attachments fit on all models within Series.

\*\*The loaded weight of the utility cart not to exceed the weight of the tractor and operator.



Snow Blower



2-bag Power Flow Bagger



Lawn Sweeper



MulchControl™ System



Utility Cart



Committed turf experts dig into what you need. Factory-trained service and parts professionals ensure that your equipment keeps working as hard as you do. So, let's get to work, together.

†The engine horsepower and torque information are provided by the engine manufacturer to be used for comparison purposes only. Actual operating horsepower and torque will be less. Refer to the manufacturer's web site for additional information. This literature has been compiled for worldwide circulation. Features, specifications and attachments subject to change without notice. While general information, pictures, and descriptions are provided, some illustrations and text may include finance, credit, insurance, product options, and accessories NOT AVAILABLE in all regions. PLEASE CONTACT YOUR LOCAL DEALER FOR DETAILS. John Deere reserves the right to change specifications, design, and price of the products described in this literature without notice. John Deere, the leaping deer symbol, and green and yellow trade dress are trademarks of Deere & Company.



4197281 (23-08)

[www.JohnDeere.com](http://www.JohnDeere.com)  
[www.JohnDeere.ca](http://www.JohnDeere.ca)

