



# Lochinvar®

HIGH EFFICIENCY BOILERS & WATER HEATERS

## ARMOR® CONDENSING WATER HEATER

Submittal Sheet

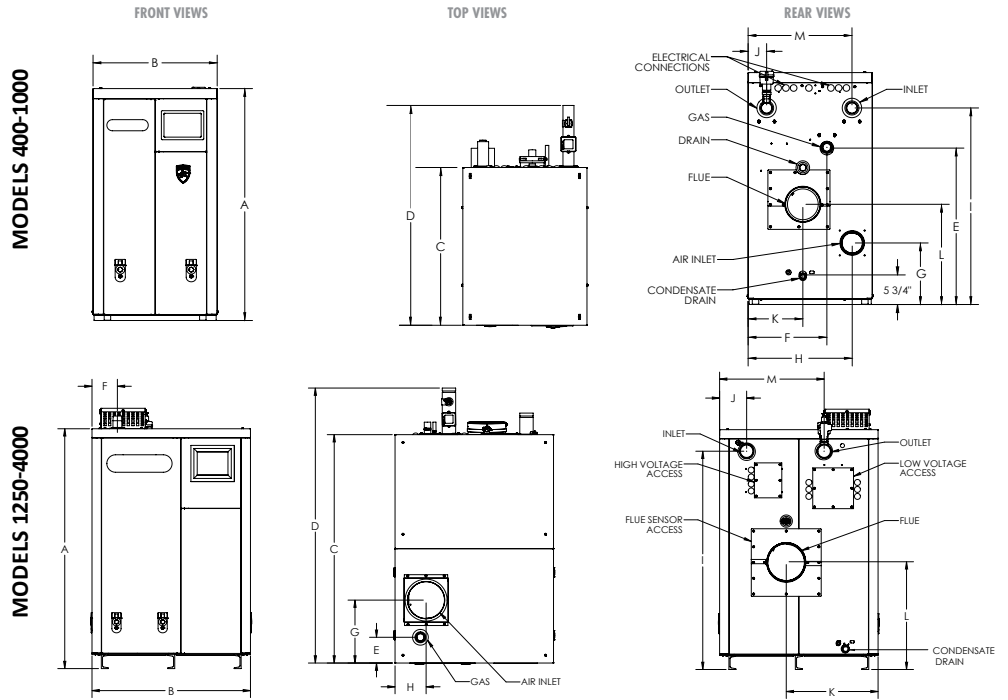
AWH-Sub-06

### ARMOR CONDENSING WATER HEATER / 400,000 TO 4,000,000 BTU/HR

Job Name: \_\_\_\_\_  
 Location: \_\_\_\_\_  
 Engineer: \_\_\_\_\_  
 Agent/Wholesaler: \_\_\_\_\_  
 Contractor: \_\_\_\_\_

Model No. \_\_\_\_\_  
 Type Gas \_\_\_\_\_ Btu/Hr Input \_\_\_\_\_  
 Recovery Rate in GPH \_\_\_\_\_ @ \_\_\_\_\_ °F Rise  
 Equipment Tag(s): \_\_\_\_\_

**NOTES:**



Model Number	Btu/Hr Input	Thermal Efficiency	GPH 100°F Rise
AWH0400NPM	399,000	99%	479
AWH0500NPM	500,000	99%	600
AWH0650NPM	650,000	98%	772
AWH0800NPM	800,000	98%	950
AWH1000NPM	999,000	98%	1,187
AWH1250NPM	1,250,000	98%	1,485
AWH1500NPM	1,500,000	98%	1,782
AWH2000NPM	1,999,000	98%	2,375
AWH3000NPM	3,000,000	98%	3,564
AWH4000NPM	4,000,000	98%	4,752

Model Number	A	B	C	D	E	F	G	H	I	J	K	L	M	Gas Conn.	Water Conn.	Air Inlet	Vent Size	Ship Wgt. (lbs.)
AWH0400NPM	45"	24"	30-1/2"	42-1/2"	29-3/4"	20-1/4"	12"	20"	38"	3-1/2"	10-1/2"	19-1/4"	20"	1"	2"	4"	4"	326
AWH0500NPM	45"	24"	30-1/2"	42-1/2"	29-3/4"	20-1/4"	12"	20"	38"	3-1/2"	10-1/2"	19-1/4"	20"	1"	2"	4"	4"	333
AWH0650NPM	45"	24"	41"	53"	30-1/2"	15-1/4"	12"	20"	38"	3-1/2"	10-1/2"	19-1/4"	20"	1-1/4"	2"	4"	6"	424
AWH0800NPM	45"	24"	41"	53"	30-1/2"	15-1/4"	12"	20"	38"	3-1/2"	10-1/2"	19-1/4"	20"	1-1/4"	2"	4"	6"	433
AWH1000NPM	45"	24"	48"	62"	30-1/2"	15-3/4"	12"	20"	38"	3-1/2"	10-1/2"	19-1/4"	20"	1-1/4"	2-1/2"	6"	6"	494
AWH1250NPM	51-1/2"	34"	49"	59"	5-1/2"	5-1/2"	13-1/2"	6-3/4"	46-3/4"	5-3/4"	19-3/4"	23"	22-1/2"	1-1/2"	2-1/2"	8"	8"	1,519
AWH1500NPM	51-1/2"	34"	52-3/4"	62-3/4"	4-1/2"	4-1/2"	13-1/2"	6-3/4"	46-3/4"	5-3/4"	19-3/4"	23"	22-1/2"	1-1/2"	2-1/2"	8"	8"	1,672
AWH2000NPM	51-1/2"	34"	65-1/2"	75-1/2"	7"	5-3/4"	14-3/4"	7-1/4"	46-3/4"	6-3/4"	18-3/4"	23"	22-1/2"	1-1/2"	2-1/2"	8"	8"	1,931
AWH3000NPM	67-1/4"	48-1/4"	79-3/4"	93-3/4"	4-3/4"	6-3/4"	17-3/4"	8-3/4"	60-1/4"	8-1/2"	25-1/2"	29-1/2"	40"	2"	4"	10"	10"	3,147
AWH4000NPM	67-1/4"	48-1/4"	96"	110"	5"	7-1/2"	17-3/4"	8-3/4"	60-1/4"	8-1/2"	25-1/2"	29-1/2"	40"	2-1/2"	4"	12"	12"	3,694

Change 'N' to 'L' for LP gas models. No deration on LP models. Performance data is based on manufacturer test results.



## Standard Features

- › Up to 99% Thermal Efficiency
- › Modulating Burner Turndown Ratio
  - 10:1 Turndown AWH0400NPM-AWH1000NPM
  - 5:1 Turndown AWH1250NPM-AWH4000NPM
- › ENERGY STAR Rated
- › CON-X-US Remote Connect
- › Indoor/Outdoor Convertible
- › Direct-Spark Ignition
- › Low NOx Operation
- › Sealed Combustion
- › Low Gas Pressure Operation
- › Vertical & Horizontal Vent Termination
- › Category IV Venting up to 150 Feet
- › PVC, CPVC, Polypropylene, or AL29-4C Vent Mat'l
- › ASME Stainless Steel Heat Exchanger
  - Gasketless Design
  - 160 psi Working Pressure
- › Stainless Steel or All Bronze Circulating Pump
- › On/Off Switch
- › Adjustable High Limit with Manual Reset
- › High & Low Gas Pressure Switches w/Manual Reset (AWH1250 - 4000)
- › Flow Switch
- › Inlet & Outlet Temperature Sensors
- › ASME Temperature & Pressure Relief Valve
- › Zero Clearance to Combustible Material
- › Approved for Combustible Floor Installation
- › 1 Year Warranty on Parts
- › 5 Year Limited Warranty (see warranties for details)

## Standard Pumps, All Bronze

- › AWH0400-0650 / 1/2 HP, 120V, 1 PH, 60 Hz
- › AWH0800-1000 / 3/4 HP, 120V, 1 PH, 60 Hz
- › AWH1250-1500 / 1 HP, 120V, 1 PH, 60 Hz
- › AWH2000 / 2 HP, 208V, 3 PH, 60 Hz
- › AWH3000 / 5 HP, 208V, 3 PH, 60 Hz
- › AWH4000 / 5 HP, 480V, 3 PH, 60 Hz

## Optional Equipment

- Audible Alarm
- High & Low Gas Pressure Switches w/Manual Reset (AWH0400-1000)
- Condensate Neutralization Kit
- SMART TOUCH™ PC Software
- Modbus or BACnet MSTP Communications
- BMS Gateway to LonWorks or BACnet
- IP Indoor to Outdoor Kits
- Outdoor to Indoor Kits (AWH1250-4000)
- Stack Frame (AWH0400-1000)

## Codes & Registrations

ASME Certified, "HLW" Stamp ANSI Z21.10.3/CSA Certified

## SMART TOUCH™ Features

- › SMART TOUCH™ Operating Control
  - Full-Color Touchscreen LCD Display
  - Built-in Cascading Sequencer for up to 8 Water Heaters
  - Building Automation Integration with 0-10 VDC Input
  - Password Security
  - Low Water Flow Safety Control & Indication
  - Inlet & Outlet Temperature Readout
  - Freeze Protection
  - Service Reminder
  - Time Clock
  - Data Logging
  - Hours Running
  - Ignition Attempts
  - Last 10 Lockouts
  - Programmable System Efficiency Optimizers
  - Night Setback
- Water Heater Pump Control
- Building Recirculation Pump Control
- › High Voltage Terminal Strip
  - 120V/1PH/60 Hz (AWH0400-1500)
  - 208V/3PH/60 Hz (AWH2000-3000)
  - 480V/3PH/60 Hz (AWH4000)
- › Low Voltage Terminal Strip
  - 24 VAC Auxiliary Device Relay
  - Auxiliary Proving Switch Contacts
  - Alarm on Any Failure Contacts
  - Pump Contacts
  - Runtime Contacts
  - Tank Thermostat Contacts
  - Tank Sensor Contacts
  - Cascade Contacts



Lochinvar, LLC  
 300 Maddox Simpson Parkway  
 Lebanon, Tennessee 37090  
 P: 615.889.8900 / F: 615.547.1000  
 f t i n Lochinvar.com

