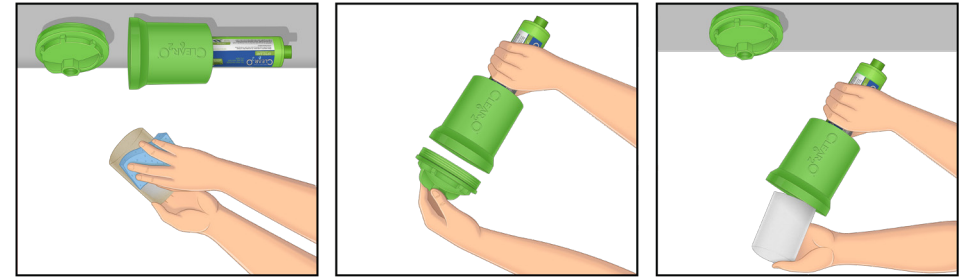
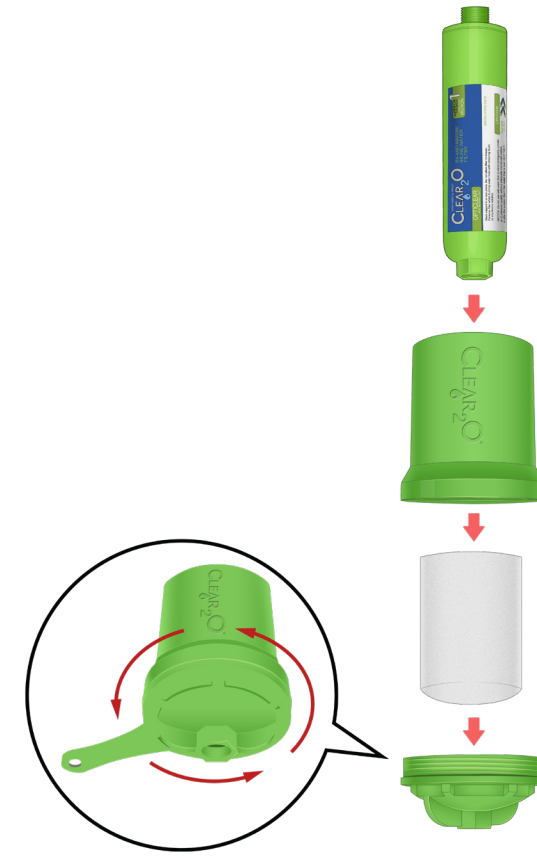


The Clear<sub>2</sub>O® DirtGUARD Sediment Pre-Filter can also be backwashed to remove loose particles by reversing water flow and using an adapter for connection. Backwashing will help to remove any loose particles and improve flow rate. It is still recommended to replace filter every six months as needed when flow rate is reduced and no longer improved via back wash or cleaning.



The Clear<sub>2</sub>O® DirtGUARD Replacement Sediment Pre-Filter can be washed with dishwashing soap and sponge followed by a thorough rinse. Using a kitchen scrubbing sponge to remove any surface debris.

## CARE AND STORAGE



- 1) Remove product from packaging and any packing material.
- 2) Hold the Clear<sub>2</sub>O® DirtGUARD Sediment Pre-filter and unscrew lid counterclockwise and remove lid.
- 3) Lift out Pre-filter and inspect filter and re-insert into housing, insuring filter is fully inserted into housing.
- 4) Replace lid and turn clockwise to tighten to snug fit and prevent leaks. Do not over tighten.

## GETTING STARTED



# CLEAR<sub>2</sub>O® DirtGUARD Replacement Sediment Pre-filter Model RDG101



[www.clear2o.com](http://www.clear2o.com)

IMPORTANT: Read and Save Instructions | [SUPPORT@CLEAR2O.COM](mailto:SUPPORT@CLEAR2O.COM)

## IMPORTANT INSTRUCTIONS

- 1) Read all instructions carefully before installing the Clear<sub>2</sub>O® DirtGUARD Sediment Pre-filter and store instructions manual for later reference. Replacement filters can be purchased on our Clear<sub>2</sub>O® website at [www.clear2o.com](http://www.clear2o.com).

- 2) The actual capacity of any filter may vary from the rated capacity. This may be due to the volume of contaminants or sediments present in your local water supply. For optimal performance, replace your filter when flow rate diminishes or notice a taste or odor reoccurrence. If so, the capacity has been reached, and recommended to replace filter(s).

- 3) Do not use with water that is microbiologically unsafe or from unknown source.

- 4) Filter is only to be used with cold potable water. Do not use with hot water, filter may be damaged.

- 5) Do not allow for the water filter system to sit for extended periods without being used (over 10 days). If system must be left unused for longer than 10 days, it is recommended to drain the water and remove the filter(s) and let air dry completely. Upon your return, re-insert filter into the system or replace with a new filter(s) and flush the system for 5 minutes.

- 6) Only use Clear<sub>2</sub>O® replacement sediment pre-filter recommended for use with this system. Use of other filters may void warranty.

- 7) Clear<sub>2</sub>O® is not liable for consequential or incidental damages due to improper installation or use of other manufacturer filters.

- 8) Installation must comply with state and local laws. Refer to your local agencies for details.

- 9) Remove plastic, label or any other shipping material before using.

Product may vary slightly from illustration.



Sediment Pre-filter

Thank you for purchasing the Clear<sub>2</sub>O® DirtGUARD Replacement Sediment Pre-Filter product. The Clear<sub>2</sub>O® DirtGUARD Replacement Sediment Pre-Filter is the first line of defense against filter clogging sediment, silt, sand, rust and other particulates. Perfect and convenient for outdoor use for RVs and campers and connects easily to the CLEAR<sub>2</sub>O® RV & Marine Inline Filter (not included) and universally fits most brands of RV inline carbon filters.

## SERVICE AND WARRANTY

Keep a record of the purchase receipt and/or installation receipt. This product has a 90-day Limited Warranty (which applies only in the United States and Canada) when strictly used in accordance with instructions to filter municipally treated/private well, potable tap water.

### What does it cover?

Any defect in material or workmanship.

### For how long?

90 days after the date of original purchase.

### What will we do to help you?

Provide you with a reasonably similar replacement product that is either new or factory refurbished.

### How do you get service?

- 1) Save your receipt as proof of the date of sale.
- 2) E-mail our customer service department at [support@clear2o.com](mailto:support@clear2o.com) detailing the matter.
- 3) Make sure to include your contact information, model number and order number.

### What is not covered by the warranty?

- Damage from commercial use.
- Damage from misuse, abuse or neglect.
- Damage from incorrect installation or improper use.
- Products that have been modified in anyway.
- Products used or serviced outside the country of purchase.
- Shipping and handling costs associated with the replacement of the unit.
- Consequential or incidental damages (please note, however, that some states do not allow the exclusion or limitation of consequential or incidental damages, so this limitation may not apply to you).

### How does state law relate to this warranty?

- This warranty gives you specific legal rights, and you may also have other rights that vary from state to state or province to province

## DO NOT USE THIS PRODUCT WITH WATER THAT IS MICROBIOLOGICALLY UNSAFE OR OF UNKNOWN QUALITY.

It is recommended that before purchasing the countertop water filter system, you have your water supply tested to determine your actual water treatment needs. Filter performance may vary based on local water conditions.

**NEED TO ORDER REPLACEMENT FILTERS**  
Visit our website at [www.clear2o.com](http://www.clear2o.com).  
Replacement filters (RDG101 series filter)

You may easily find product information and/or product updates on our social media forums:

- Clear2O Products or Clear2Go
- Clear2O
- Clear2O or Clear2OWater
- Clear2O Products

Copyright © 2020 Applica Water Products, Inc.  
All rights reserved.  
2020/CSC100S/B  
[www.clear2o.com](http://www.clear2o.com)

