



# ADVANCED WATER FILTRATION PITCHER

OWNER'S MANUAL

**TASTE THE DIFFERENCE**

**1**  
SUPERIOR  
PERFORMANCE  
MICRON

**50**  
GALLONS  
FILTRATION

  
**FAST  
FILLING**  
UNDER A MINUTE

  
**NO SOAKING  
REQUIRED**

**NOT**  
RECOMMENDED  
FOR FAUCET  
SPRAYERS

**ADAPTERS  
& FILTER  
INCLUDED**

## REDUCES

- ✓ Chlorine
- ✓ Taste & Odor
- ✓ Sediment
- ✓ Heavy Metals:
- ✓ Lead & Mercury
- ✓ Organic Chemicals
- ✓ VOCs
- ✓ Pesticides
- ✓ Herbicides
- ✓ Pharmaceuticals
- ✓ PFOE



**IMPORTANT:** Read and Save these Instructions  
This System DOES NOT require the services of a plumber.

[www.clear2o.com](http://www.clear2o.com)

**QUESTIONS:** [support@clear2o.com](mailto:support@clear2o.com)

# Box Contents

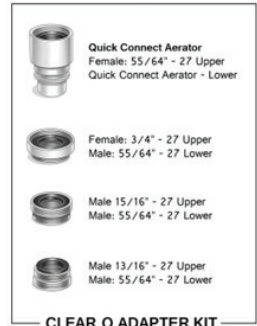
## WHAT'S INCLUDED



CLEAR\_O FILTER PITCHER



CLEAR\_O SOLID BLOCK FILTER



Quick Connect Aerator  
Female: 5/64" - 27 Upper  
Quick Connect Aerator - Lower

Female: 3/4" - 27 Upper  
Male: 5/64" - 27 Lower

Male 15/16" - 27 Upper  
Male: 5/64" - 27 Lower

Male 13/16" - 27 Upper  
Male: 5/64" - 27 Lower

CLEAR\_O ADAPTER KIT









## HOW IT WORKS



The Clear2O® ADVANCED Water Filter Pitcher (CWS100 - filters 50 gallons) fills under a minute. Our pitcher (CWS100) uses faucet pressure to pass through a 1 MICRON solid carbon block filter, removing over 200 contaminants. We can achieve this level due to the use of pressure, and requires a faucet adapter to be installed on your faucet in order to attach the Quick Connect. The Quick Connect Adapter is designed to fit most standard faucet sizes but, if your kitchen faucet does not have these types of connections then you may want to consider installing the adapter on another faucet within the house.

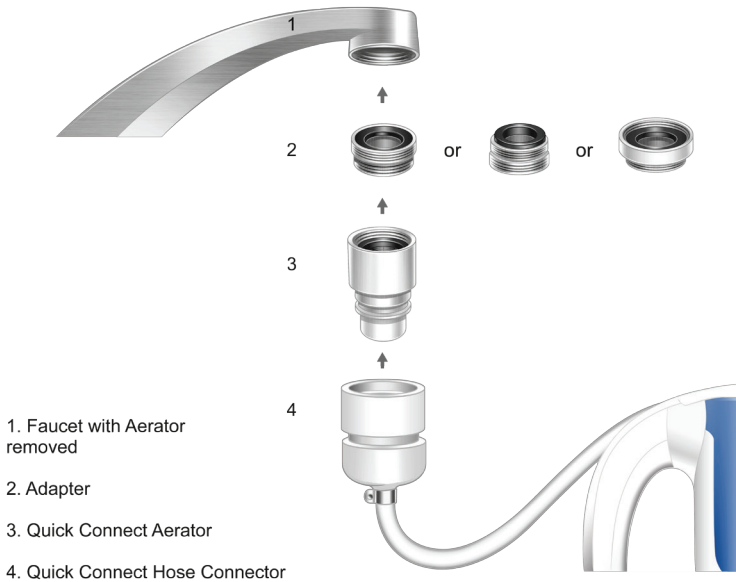
**BEFORE INSTALLING & USING YOUR WATER FILTRATION PITCHER, PLEASE REVIEW THE FOLLOWING:**

Check the style of your kitchen faucet to make sure it is not a pull-out style sprayer faucet. The Clear2O Advanced Water Filtration Pitcher is not recommended for pull-out style sprayer faucets. If you have a pull-out style sprayer faucet, you may not be able to install the required quick connect adapter.

Standard faucet	Standard faucet	Modern faucet	Sprayer faucet
 	 	 	 
<b>Compatible</b>	<b>Compatible</b>	<b>Not compatible</b>	<b>Not compatible</b>

- Read this manual completely before attempting to install this product.
- CLEAR2O® Water Filtration Pitcher is for domestic household use only.
- For this Water Filtration Pitcher to continue to perform as tested and represented, be sure to use a only genuine certified CLEAR2O® Replacement Water Filter. Our filters are unique to CLEAR2O® and are the only ones that will work with the pitcher.
- The filtration of your filter may vary from the rated capacity of 50 gallons. This may be due may be due to the concentration of contaminants or sediment present in your water supply.
- For use with COLD potable water supplies only. Do NOT for use with hot water; be sure faucet is turned to cold before using.
- DO NOT allow the pitcher to sit for extended periods of time without being used. If the pitcher is left unused for more than a couple of weeks, replace the filter.
- Installation of this product must comply with all state and local laws and regulations. Refer to your local agencies for details.
- DO NOT use water that is microbiologically unsafe or of unknown quality without adequate disinfection before using the System.
- Individuals requiring specific microbiological purity should consult their physician.
- The contaminants or other substances removed or reduced by the CLEAR2O® Water Filtration Pitcher Filtration System may not be in all users' water.

# Quick Easy Installation



# Upon Opening Box



1. Remove packing materials and stickers. Keep and save manual for future reference.

2. Place pitcher on a flat surface to remove insert card inside the pitcher. Use one hand to hold down the pitcher



3. Gently tug the hose upwards to remove the lid.

**NOTE:** If the lid has become wedged due to shipping, this is easily released by placing one hand on front of pitcher and one hand on handle, then gently compress pitcher by pressing hands toward each other. Flexing the pitcher wall slightly will release the wedge. Then repeat step #2 and #3 to release lid.



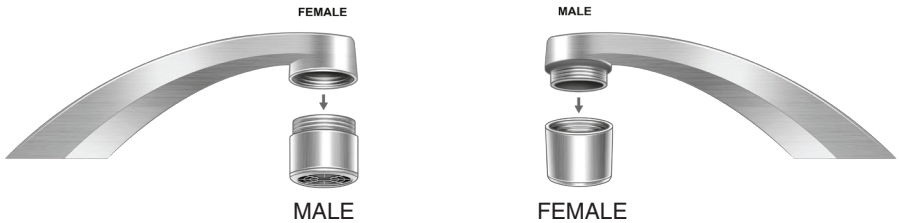
4. Remove the pitcher lid and remove the insert card.

5. Hand-wash pitcher lid filter reservoir with a mild detergent and water. Do not use abrasive cleaners. Rinse well.

**TIP:** Hand-wash pitcher, lid and filter reservoir periodically. Do not wash in the dishwasher. For best results for cleaning pitcher lid, dilute a teaspoon of vinegar in a cup of water. Soak a soft sponge in vinegar solution and wipe clean.

# Installing Faucet Quick Adapter Connect

1. Unscrew faucet aerator as shown below Quick Connect Adapter. Your faucet aerator may look different than faucet/aerator shown. Store aerator in safe location, for future use.
2. Identify and remove your faucet's aerator. Check the style of your faucet & aerator to determine if the threads are on the outside or inside.



**IMPORTANT:** The faucet aerator often has a rubber washer that might get stuck to the metal faucet. Be sure to remove rubber washer from the faucet and wipe any water or debris from faucet.

Your faucet adapter installation kit includes the aerator and three different sized adapters. The adapters have a dual thread design to fit most standard faucets.

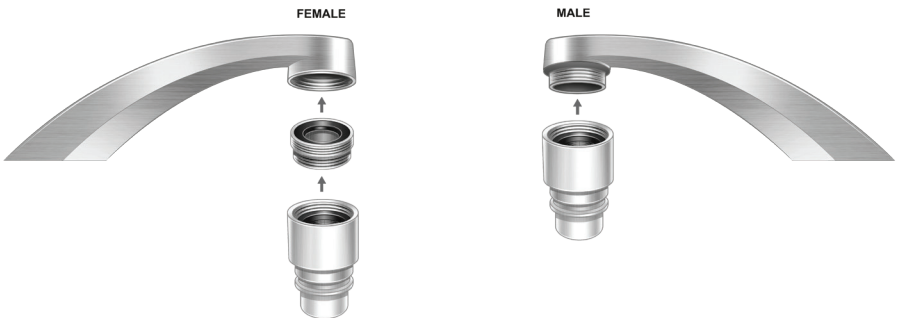
Faucet with Female thread style (threads on inside)

To install aerator/adapter: Determine the correct adapter size and follow installation instructions below.

Faucet with Male thread style (thread on outside)

To install aerator/adapter: Determine the correct adapter size and follow installation instructions below.

**NOTE:** For this type of faucet, you may need to use one of the adapters with the aerator to fit the size of your faucet. The Quick Connect aerator also can be fitted directly onto the faucet utilizing the inside threads on the aerator, depending on faucet size & style.



# Installation

1. Make sure both adapter and quick connect aerator have the rubber washer in place. If not, insert a rubber washer into adapter or aerator.
2. Try one adapter to connect onto faucet. If it is not the right size, then try the other adapter.
3. Once you have the right size adapter, screw onto faucet.
4. Hand tighten adapter in place. If additional tightening is needed, insert a coin into the bottom slots of adapter and turn. Remove the coin.
5. Once adapter is secure, attach upper end of Quick Connect Aerator onto adapter with permanent rubber washer in place. Hand tighten.
6. Turn on water and insure no leaks.....check gasket and tighten if necessary. If pliers are to be used, it is recommended to place a thick cloth around quick connector to avoid scratching.

**IMPORTANT:** Never remove the permanent rubber washer from aerator, leaks can occur.

You are now ready to connect your Clear2O Water filter pitcher!

## Instructions if Faucet Adapter Kit Does Not Fit

Your CLEAR2O® product includes the most commonly used faucet adapters sizes, the adapter sizes included with your product are:

### Included with Product:

- |                        |  |
|------------------------|--|
| Quick Connect Aerator: | Upper: Female 55/64"-27                        |
| Adapter:               | Upper: Male 13/16"-27 x Lower: Male 55/64"-27  |
| Adapter:               | Upper: Male: 15/16"-27 x Lower: Male 55/64"-27 |
| Adapter:               | Upper: Female: 3/4"-27 x Lower: Male 55/64"-27 |

In some cases, your faucet may require a less common adapter not included with the product:

### Less Common Adapter Sizes: (Examples)

- |          |  |
|----------|--|
| Adapter: | Upper: Male 55/64"-27 x Lower: Male 55/64"-27    |
| Adapter: | Upper: Female: 13/16"-27 x Lower: Male 55/64"-27 |

In this case, the first step is to determine what adapter size is needed. To do so, first determine if the aerator removed from your faucet has male threads or female threads. You will need the same type of Male or Female adapter as the aerator. Next, determine if your aerator fits any of the adapter threads included with the product. This may help to identify the proper thread size for adapter needed and need only find the opposite male or female version of the same size.

Example: If your FEMALE faucet aerator fits any of the 55/64"-27 threads, then you require the following adapter: Female 55/64"-27 x Male 55/64"-27.

Example: If you 1" MALE faucet aerator fits the Female 3/4"-27 adapter, then you require the following adapter: Male 3/4" -27 x Male 55/64"-27.

In all cases, the LOWER portion of the adapter should measure Male 55/64"-27.

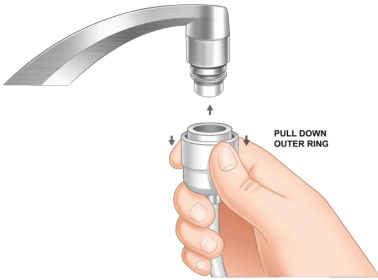
Although less commonly used, the adapters are widely available online and at hardware, & plumbing supply stores. At the time of this writing, you can find additional adapters on our website at [www.clear2o.com](http://www.clear2o.com). If you choose to find locally, most hardware and plumbing stores stock these in the Faucet Repair section, usually in the same shelf location as replacement "faucet aerators & faucet parts." It is recommended to take your faucet aerator with you to insure you find the right adapter size.

If you continue to have difficulty with your installation, please contact us at [support@clear2o.com](mailto:support@clear2o.com) for further instructions.

**If the enclosed adapters do not fit, please do not return to store.  
Contact CLEAR<sub>2</sub>O for assistance at [support@clear2o.com](mailto:support@clear2o.com).**

## PITCHER CONNECTION

---



1. Pull the quick-connect hose out of the storage compartment located on the pitcher handle.
2. Grip Quick-connect hose connector with one hand, pull down on the outer ring and hold. With the other hand, grasp the faucet to provide stability.
3. Insert faucet adapter into quick-connect fully.



4. Release the outer ring upward. Gently tug on the connector to ensure it is securely on the faucet.

**IMPORTANT:** To avoid damage to the hose connector, you must pull back and hold the connector's outer ring before inserting onto the faucet.

5. To release, pull down on outer ring and remove quick-connect hose.

## Ready For Filtered Water

### IMPORTANT:

- Designed for use on municipally treated/private well, potable water (e.g. tap water).
- NEVER use hot water (above 85°F/29°C).



1. Turn faucet to cold water.
2. Open the faucet enough so that water flows through the hose.
3. Fill the pitcher to the MAX line. Do not overfill.
4. Discard the first 3 pitchers of filtered water to flush the system and purge the air. This will remove any fine, black carbon particles left over from the manufacturing process. Drinking or cooking with this discard water is not recommended, but it can be used to water plants. This flushing procedure must be repeated every time a new replacement filter is installed.
5. Once the pitcher is filled with desired amount of water, again push down outer ring and then pull down connector to disconnect from the faucet.

**IMPORTANT:** To avoid damage to the connector, you must fully pull down the outer ring to release the connector before removing.

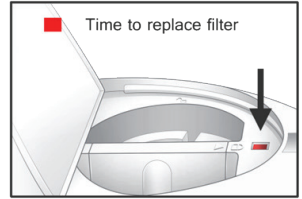
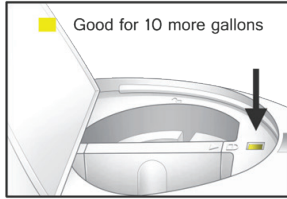
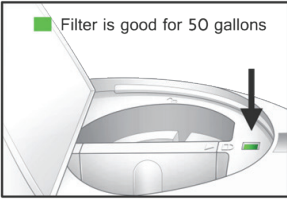
6. Wipe the connector surface to dry.
7. When finished, insert quick-connect hose and connector into handle storage compartment.
8. Keep new faucet adapter attached in place, but can be removed for cleaning, if desired.
9. Store pitcher with filtered water in refrigerator for use. If water is to be stored outside of refrigerator, it is recommended to store out of direct sunlight and to change water daily.
10. For best results, the filter should be replaced after 50 gallons of consumed water. Unlike some other product filters that estimate filter life based on time, the intelligent filter indicator measures the amount of water you use, resulting in a better value for your money. You will not replace the filter unless you really have reached the recommended filter capacity.



# Intelligent Filter Indicator

Your unit has an Intelligent Filter Indicator built into the filter cover that automatically activates the flow meter indicator and resets it every time you install a new filter. This makes it easy to know exactly when to replace the filter.

1. Once the filter is installed, the indicator will be green for 50 gallons of water consumption.



2. Then it changes to yellow for 10 more gallons of water.
3. Once indicator changes to red, it's time to replace the filter.
4. Do not unlock the filter unless you are replacing it. Unlocking the filter will reset the filter indicator.

# Replacing A New Filter



1. Hold pitcher with one hand and with the other use your index fingers to open lid



2. Lift the pitcher lid to open upwards.



3. Remove filter by turning counter clockwise



4. Pull filter up to remove.



5. Insert the new filter into the filter reservoir by lining the arrow on the filter bar with unlock symbol on the lid. Turn the bar clockwise to the locked symbol position. The top of the filter must be fully aligned with locked position. Filter must be locked in place.

6. Close the filter lid.

**IMPORTANT:** If you experience a reduction in the flow rate of the water, you may need to change your replacement filter more frequently. This condition is typically caused by poor municipal water conditions, especially if it contains a high amount of sediment or minerals, and is not a defect in the filter itself.

7. Flushing Procedure: Discard the first 3 pitchers of filtered water to flush the system and purge the air. This will remove any fine, black carbon particles left over from the manufacturing process. Drinking or cooking with this discard water is not recommended, but it can be used to water plants.

**NOTE:** REPEAT FLUSHING PROCEDURE EVERY TIME A NEW FILTER IS INSTALLED. Replacement Filters can be ordered through our CLEAR<sub>2</sub>O website at [www.clear2o.com](http://www.clear2o.com).

## Cleaning Pitcher

1. Remove lid assembly pull the Quick-connect hose out of the storage compartment.
2. Holding the pitcher by the handle with one hand, grasp Quick-connect hose with your other hand as close as possible to where it connects to the pitcher.
3. Gently pull up on the hose to release the lid assembly.

**NOTE:** If the lid has become wedged, this is easily released by placing one hand on front of pitcher and one hand on handle, then gently compress pitcher by pressing both hands toward each other. Flexing the pitcher-wall slightly will release the wedge. Then repeat step #2 and #3 to release lid.

4. Hand-wash pitcher lid filter reservoir with a mild detergent and water. Do not use abrasive cleaners. Rinse well.

**TIP:** Hand-wash pitcher, lid and filter reservoir (remove filter) periodically. Do not wash in the dishwasher. For best results for cleaning pitcher lid, dilute a teaspoon of vinegar in a cup of water. Soak a soft sponge in vinegar solution and wipe clean and rinse with clean water.

## Troubleshooting/FAQ

PROBLEM	SOLUTION
Adapter(s) does not fit my faucet.	Follow instructions in section “Does Not Fit” which may require additional purchase of an adapter to fit your faucet size and style. Usually located in local hardware & plumbing supply stores. Also additional sizes available on <a href="http://www.clear2o.com">www.clear2o.com</a>
None of the provided faucet adapters work with my faucet.	Make sure you do not have a pull-out style faucet. The CLEAR <sub>2</sub> O Water Filter Pitcher will not work with pull-out style faucets. If you do not have a pull-out style faucet and the adapters still do not fit, contact CLEAR <sub>2</sub> O Customer Service at <a href="mailto:support@clear2o.com">support@clear2o.com</a> .
Filter lid does not close.	Make sure the filter is securely locked in place. Verify the bar on the filter is fully aligned with the locked symbol.

Water leaks or sprays from connection at faucet.	Verify that you placed the washer between the faucet and the adapter/aerator and tightened appropriately. Confirm that you have pushed the faucet connector all the way onto the faucet.
What filters models work with this pitcher?	CLEAR <sub>2</sub> O CWF500 series filters and available at <a href="http://www.clear2o.com">www.clear2o.com</a> .
Filtered water flow has slowed down.	Excessive amounts of particles in the water supply may cause premature clogging of the filter. May require more often filter replacement if clogged prematurely.
No water flows with faucet turned on.	Immediately turn off water, check connections to insure correctly installed. If correct, filter should be replaced.
Is the pitcher BPA free?	Yes, all materials used are BPA free.
Do you have an AutoShip Replacement Filter Program?	Yes, you can subscribe to receive filters every 2, 3 or 6 months.
Can I use another brand filter?	The pitcher will only operate with Clear <sub>2</sub> O water filter CWF500 series.

## Service And Warranty

This product has a 90-day Limited Warranty (which applies only in the United States and Canada) when strictly used in accordance with instructions to filter municipally treated/private well, potable tap water.

### WHAT DOES IT COVER?

Any defect in material or workmanship.

### FOR HOW LONG?

90 days after the date of original purchase. This warranty is available to the original purchaser only and is void when the covered product is used for any reason other than for personal, family or household purposes.

### WHAT WILL WE DO TO HELP YOU?

Provide you with a reasonably similar replacement product.

### HOW DO YOU GET SERVICE?

- Save your receipt as proof of the date of sale.
- E-mail our customer service department at [support@clear2o.com](mailto:support@clear2o.com) detailing the matter.
- Make sure to include your contact information, model number and order number.
- Applica Water Products shall have the right to determine if the product is defective and, at its option, replace it with similar or equivalent item. In order for a replacement or refund to be made, the defective product must be returned at the customer's expense.

### WHAT IS NOT COVERED BY THE WARRANTY?

- Damage from commercial use.
- Damage from misuse, abuse or neglect.
- Products that have been modified in anyway.
- Products used or serviced outside the country of purchase.
- Shipping and handling costs associated with the replacement of the unit.
- Consequential or incidental damages (please note, however, that some states do not allow the exclusion or limitation of consequential or incidental damages, so this limitation may not apply to you).

### HOW DOES STATE LAW RELATE TO THIS WARRANTY?

This warranty gives you specific legal rights, and you may also have other rights that vary from state to state or province to province.

### DO NOT USE THIS PRODUCT WITH WATER THAT IS MICROBIOLOGICALLY UNSAFE OR OF UNKNOWN QUALITY.

It is recommended that before purchasing a water filter pitcher, you have your water supply tested to determine your actual water treatment needs. Filter performance may vary based on local water conditions.

### PURCHASES MADE IN IOWA

For purchases made in Iowa: This form must be signed and dated by the buyer and seller prior to consummation of this sale. This form should be retained on file by the seller for a minimum of two years.

BUYER

SELLER

Name

Name

Address

Address

City

City

State

Zip

State

Zip

Signature

Date

Signature

Date

Visit our website at [www.clear2o.com](http://www.clear2o.com).

Subscribe to the Filter Auto Ship Program & Save Time & Money receive filters directly to your home every few months. Makes it easy to keep fresh filters on hand.

**FOR SERVICE AND QUESTIONS CONTACT: [support@clear2o.com](mailto:support@clear2o.com)**

You may easily find product information and/or product updates on our social media forums:



Clear2O or Clear2OWater



Clear2O Products or Clear2Go



Clear2O Products



Clear2O



[www.clear2o.com](http://www.clear2o.com)

Applica Water Products, LLC.  
PO Box 279307 - Miramar, FL 33027  
Made and Printed in People's Republic of China

All rights reserved.  
Clear2O® is a trademark of  
Applica Water Products, LLC.  
Copyright © 2018 Applica Water Products, Inc.  
2018/CWS100RV1