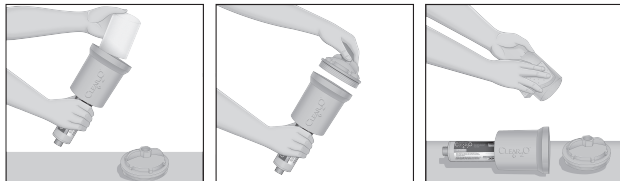


CARE AND STORAGE

Once system is operating correctly, leaks at fittings are rare and can usually be corrected by tightening the hose fitting, insuring that gaskets are used within hose ends. If the unit leaks between the Lid and Housing, be sure the O-ring in the Housing is in place and tighten firmly. Lubricate the O-ring lightly. Silicone grease is the preferred lubricant type, but petroleum jelly will also work.

- 1) TO CLEAN: Clear₂O® DirtGUARD Sediment Pre-Filter housing can be washed with dishwashing soap and sponge followed by a thorough rinse.
- 2) The Clear₂O® DirtGUARD Sediment Pre-Filter can be washed using a



- 3) The Clear₂O® DirtGUARD Sediment Pre-Filter can also be backwashed to remove loose particles by reversing water flow and using an adapter for connection. Backwashing will help to remove loose particles and improve flow rate. It is still recommended to backwash when needed and replace filter every six months or when flow rate is reduced and no longer improved via backwash or cleaning.
- 4) To prevent backwashing adapter from becoming lodged inside filter. Attach to hose and first and tighter, then insert hose and adapter into DirtGUARD reversing flow. Do not over tighten.
- 5) TO STORE: it is recommended to empty system of water if system is not used for over ten day period.
- 6) Turn off water at spigot and release pressure at faucet before attempting to remove.
- 7) Remove filter. Gently shake out water and allow filter to air dry. If filter has not reached its capacity, once dry, filter can be re-installed for dry storage and future use.
- 8) Follow start up instructions when ready for re-use. It is recommended to minimally change filters every six months to insure best quality operation of unit.
- 9) FOR RESTART: After storage period, visually inspect filter system for any signs of damage or leaks from travel or storage. Insure cap and housing are tightened and unit is ready for operation. Turn on water and flush filter system for 5 minutes prior to use.
- 10) Use of the Clear₂O® DirtGUARD Sediment Pre-filter will help to keep harmful sediments from entering your RV inline Carbon Filter, extending the life of the Carbon Filter. Please follow instructions for RV Inline Carbon Filter use from manufacturer.

SERVICE AND WARRANTY

Keep a record of the purchase receipt and/or installation receipt. This product has a 90-day Limited Warranty (which applies only in the United States and Canada) when strictly used in accordance with instructions to filter municipally treated/private well, potable tap water.

What does it cover?

Any defect in material or workmanship.

For how long?

90 days after the date of original purchase.

What will we do to help you?

Provide you with a reasonably similar replacement product that is either new or factory refurbished.

How do you get service?

- 1) Save your receipt as proof of the date of sale.
- 2) E-mail our customer service department at support@clear2o.com detailing the matter.
- 3) Make sure to include your contact information, model number and order number.

What is not covered by the warranty?

- Damage from commercial use.
- Damage from misuse, abuse or neglect.
- Damage from incorrect installation or improper use.
- Products that have been modified in anyway.
- Products used or serviced outside the country of purchase.
- Shipping and handling costs associated with the replacement of the unit.
- Consequential or incidental damages (please note, however, that some states do not allow the exclusion or limitation of consequential or incidental damages, so this limitation may not apply to you).

How does state law relate to this warranty?

- This warranty gives you specific legal rights, and you may also have other rights that vary from state to state or province to province.

DO NOT USE THIS PRODUCT WITH WATER THAT IS MICROBIOLOGICALLY UNSAFE OR OF UNKNOWN QUALITY.

Filter performance may vary based on local water conditions.



NEED TO ORDER REPLACEMENT FILTERS
Visit our website at clear2o.com
Replacement filters (RDG201 series filter)

Copyright © 2022 Aplica Water Products, Inc.
All rights reserved.
2022/CPF1000
clear2o.com.

FOLLOW US     

Questions - support@clear2o.com
Made in People's Republic of China



CLEAR₂O® DirtGUARD Sediment Pre-filter

CPF1000

IMPORTANT: Read and Save Instructions

SUPPORT@CLEAR2O.COM | clear2o.com

Thank you for purchasing the Clear₂O® DirtGUARD Sediment Pre-Filter product.

The Clear₂O® DirtGUARD Sediment Pre-Filter is the first line of defense against filter clogging sediment, silt, sand, rust and other particulates. Perfect and convenient for outdoor use for RVs and campers and connects easily to the Clear₂O® RV & Marine Inline Filter (not included) and universally fits most brands of RV inline carbon filters.

Register your product at clear2o.com.

If you should experience a problem or have a product question, please visit our website at clear2o.com or e-mail us at support@clear2o.com. Include your product model number on your e-mail.

Clear₂O® DirtGUARD replacement sediment pre-filters are available at our website clear2o.com.



Product may vary slightly from illustration.

- 1) Prefilter Housing
- 2) Sediment Pre-filter (model RDG201)
- 3) Wrench
- 4) Backwash Adapter
- 5) Hose Extender

IMPORTANT INSTRUCTIONS

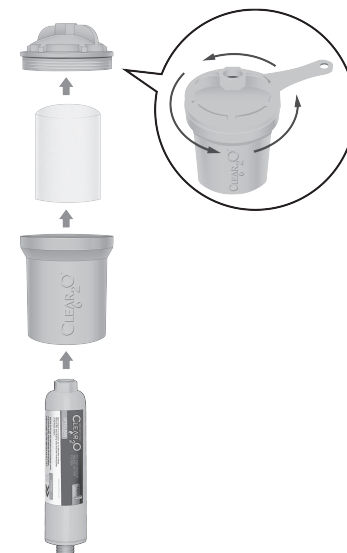
- 1) Read all instructions carefully before installing the Clear₂O® DirtGUARD Sediment Pre-Filter and store instructions manual for later reference. Replacement filters can be purchased on our Clear₂O® website at clear2o.com.

- 2) The actual capacity of any filter may vary from the rated capacity. This may be due to the volume of contaminants or sediments present in your local water supply. For optimal performance, replace your filter when flow rate diminishes or notice a taste or odor reoccurrence. If so, the capacity has been reached, and recommended to replace filter(s).
- 3) Do not use with water that is microbiologically unsafe or from unknown source.
- 4) Filter is only to be used with cold potable water. Do not use with hot water, filter may be damaged.
- 5) Do not allow for the water filter system to sit for extended periods without being used (over 10 days). If system must be left unused for longer than 10 days, it is recommended to drain the water and remove the filter(s) and let air dry completely. Upon your return, re-insert filter into the system or replace with a new filter(s) and flush the system for 5 minutes.
- 6) Only use Clear₂O® replacement sediment pre-filter recommended for use with this system. Use of other filters may void warranty.
- 7) Clear₂O® is not liable for consequential or incidental damages due to improper installation or use of other manufacturer filters.
- 8) Installation must comply with state and local laws. Refer to your local agencies for details.
- 9) Remove plastic, label or any other shipping material before using.
- 10) Once installed, do not remove filter housing while water is flowing or under pressure. Turn off water and open faucet to allow pressure to decrease completely prior to attempting to remove filter. Failure to release pressure completely prior to opening may cause damage to unit or yourself. Be safe and follow instructions.
- 11) Check for leaks on an ongoing basis to insure unit is sealed and operating correctly. Vibrations from driving or handling may cause housings or fittings to become loosened. Check all regularly to insure no leaks are occurring. If any leaks are found, immediately shut off water source and resolve leak to avoid any damage from occurring.
- 12) IMPORTANT: To prevent pressure spikes, use a pressure regulator on faucet inlet (prior to water flow to filter system) rated at below 60 psi. This will help to prevent damage to filter system and RV hoses and connections from water pressure spikes or pressure inconsistencies.

GETTING STARTED

- 1) Remove product from packaging and any packing material.
- 2) Hold the Clear₂O® DirtGUARD Sediment Pre-filter and unscrew lid counterclockwise and remove lid.
- 3) Lift out Pre-filter and inspect filter and re-insert into housing, insuring filter is fully inserted into housing.

NOTE: The DirtGUARD Sediment Pre-filter housing has a thin O-Ring seal located at the top of the housing that seals the housing to the canister top. This must be in place within the associated groove to prevent leaks. TIP: it is often helpful to apply a small amount of silicone lubricant to prevent the seal from sticking or becoming dislodged during installation/removal. It is recommended to replace O-ring annually or, as needed to prevent leaks. Replacement O-Ring Seals can be purchased at clear2o.com.



- 8) Insert inlet side of RV inline water filter (not included) into DirtGUARD Sediment Pre-filter housing and tighten firmly, but do not over tighten.
- 9) Connect approved RV water hose to outlet side of RV inline water filter and other end of hose to RV water inlet. TIP: It is recommended to use a flexible hose protector or 90° elbow to reduce pressure on RV water inlet due to weight of hose.
- 10) Check entire system to insure all connections are secure. You are now ready to turn on water slowly to allow water to fill filters, check for leaks. If leaks are found, turn off water and make the necessary adjustments to eliminate the leaks. If no leaks, open a faucet within the RV and let water run for 5 minutes to clear any dust or debris from manufacturing process. Once complete, turn off RV faucet.

- 4) Replace lid and turn clockwise to tighten to snug fit and prevent leaks. Do not over tighten.
- 5) Replace lid, insuring O-Ring is in place. Hand tighten lid firmly but do not over tighten.
- 6) It is recommended to install at the spigot location and is recommended to use a flexible hose protector. NOTE: Recommend using a pressure regulator valve (60 psi max) upstream of filter system to prevent any damage from water pressure spikes.
- 7) Connect hose protector to inlet side (top) of housing and then connect to spigot.



- 11) Water can remain turned on at the spigot and is now available for use.
- 12) Filter life will vary depending on the quality & condition of the input water. Once the filter reaches its capacity, it has done its job in protecting you from contaminants and should be replaced. It is recommended to minimally change filters every six months to insure best quality operation of unit.
- 13) Recommended to use a Hose Protector to allow for installation when water spigot is located near ground.

IMPORTANT:

Do not run hot water through the filter. Filter may become damaged.

