

MLE/MLG24PD

MAYTAG® COMMERCIAL
SINGLE LOAD SUPER-CAPACITY
STACK DRYER



LEGENDARY MAYTAG DEPENDABILITY

Maximizing your equipment investment for over a half century.



*Shown with
optional solid
door kit.*



TWO POCKETS IN THE SPACE OF ONE

You can potentially double your dryer income and help eliminate waiting with two dryer pockets in the same floor space as one single-load dryer.

FOR YOUR CUSTOMERS:

- Extra-Large 7.4 cu. ft. Capacity
- Easy To Use One-Touch Cycle Selection
- High Air Flow For Better Clothes Care
- Time Remaining Display
- Optional Top Off
- Large Window For Convenience

FOR YOUR OPERATION:

- TurboVent™ Technology — Better Performance On Long Vents
- Advanced Computer Trac® Controls Allow For Easy Programming
- Front Access For Easier Self Service
- Accu Trac® Audit System With Two-Way Data Communication
- Large-Capacity Metal Mesh Lint Filter
- Debit Card Compatibility
- Dual Coin-Drop Option

BUILT-TO-LAST™ FEATURES:

- Four Roller Suspension With Permanently Lubricated Bearings
- Blower Guard Reduces Service Calls
- Premium Security Vault
- Best Warranty in the Business

FASTER DRYING WITH TURBOVENT™ TECHNOLOGY





OUR COMMITMENT TO DEPENDABLE QUALITY

At Maytag, we believe durable goods should remain just that. That's why every Maytag® product is constructed of the highest-quality materials and with the utmost in precision craftsmanship. It's also why we stand behind our equipment with solid service and support from our professional Maytag laundry suppliers. Simply put, when you choose Maytag® products, you ensure your peace of mind.

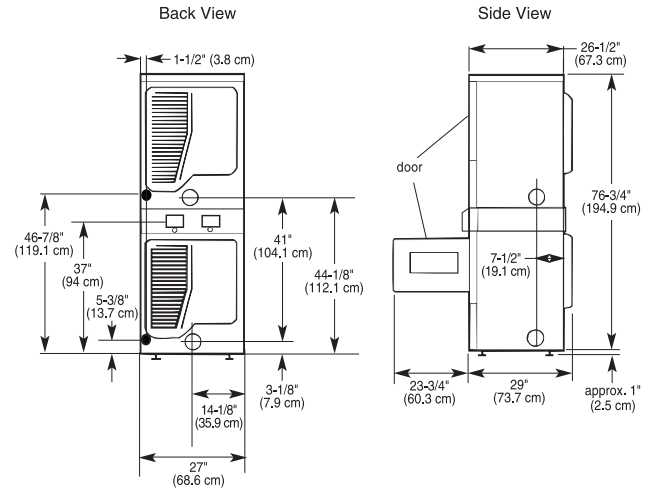


MLE/MLG24PD MAYTAG® COMMERCIAL SINGLE LOAD SUPER-CAPACITY STACK DRYER

Maytag® Super-Capacity Dryer MICROPROCESSOR COIN-DROP

DRYER SPECIFICATIONS	
MODEL	MLE/MLG24PD
MOTOR	
Single-phase, thermoprotected against overload, auto-reset	•
HP (kw)	1/3 (.25)
CAPACITY	
Cu. ft. (liters)	7.4 (209.5)
AIRFLOW — cfm (cmm)	
Gas/Electric models — per pocket	230 (6.5)/215 (6.1)
Export, Gas/Electric models — per pocket	230 (6.5)/215 (6.1)
TUMBLE SPEED	
RPM	50 ± 1.5
ELECTRICAL REQUIREMENTS	
MDE model — voltage	240V/60Hz*
MDG model — voltage	120V/60Hz
Export models — voltage	220-240V/50 Hz
BREAKER/FUSE REQUIREMENTS — amps	
Electric model — domestic (each drying chamber)	30
Electric model — export (one terminal block per stack)	40
Electric model — Canada (one terminal block per stack)	60
Gas models, all versions — (one power cord per stack)	15
HEATER ELEMENT RATING — watts	
Domestic model — per pocket	5,600
Export models — per pocket	4,600
EXHAUST DUCT DIAMETER	
In. (mm)	4 (101.6)
ELECTRONIC BURNER IGNITION	
MDG models	•
GAS RATING	
MDG models, all versions — BTU/hr. (kcal/hr.)	24,000 (6,048)
GAS INLET	
MDG models — in.	3/8 N.P.T.
AUTOMATIC PRESSURE REGULATOR	
MDG models	•
ADJUSTABLE LEVELING LEGS	
MDG models	•
APPROXIMATE WEIGHT	
Crated — lbs. (kg)	290 (131.5)
Uncrated — lbs. (kg)	265 (120.2)
DIMENSIONS	
Width — in. (mm)	27 (685.8)
Depth — in. (mm)	29 (736.6)
Height — in. (mm)	76.75 (1949)

See specific instructions for proper installation. Because of continuous product improvement, Maytag reserves the right to change specifications without notice.
* 208-Volt electrical element kit available



MAXIMUM EXHAUST DUCT LENGTH PER NUMBER OF TURNS

Number Of
90° Turns



Rigid Metal Vent

	Box Hood and Louvered Style	Angled Hood Style
0	135 ft. (41.2 m)	129 ft. (39.3 m)
1	125 ft. (38.1 m)	119 ft. (36.3 m)
2	115 ft. (35.1 m)	109 ft. (33.2 m)
3	106 ft. (32.3 m)	100 ft. (30.5 m)
4	98 ft. (29.9 m)	92 ft. (28.0 m)

Flexible Metal Vent

	Box Hood and Louvered Style	Angled Hood Style
0	76 ft. (23.2 m)	62 ft. (18.9 m)
1	71 ft. (21.6 m)	57 ft. (17.4 m)
2	67 ft. (20.4 m)	53 ft. (16.2 m)
3	65 ft. (19.8 m)	51 ft. (15.6 m)
4	63 ft. (19.2 m)	49 ft. (14.9 m)



NEW YORK CITY
M.E.A.



BEAB
Approved