

COLLECTOR'S EDITION: LEGENDS

# ARCHITECTURAL DIGEST

THE INTERNATIONAL MAGAZINE OF INTERIOR DESIGN AND ARCHITECTURE

JANUARY 2001

## DESIGNERS' IDEAS

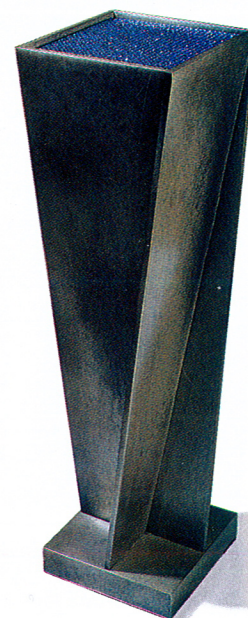


# TO *the* TRADE

## A CLEAN INTRODUCTION

**M**y new collection is a synthesis of minimalism and glamour," Gary Hutton says of the bronze tables he's created for the San Francisco showroom **Enid Ford Atelier**. "I'm fascinated by bronze—it has the ability to be both ancient and modern."

Hutton's pieces range from a sheet-bronze cube table, called A5, to a patinated cast-bronze Ciao table, which has a round top and a conical base. He uses a variety of materials and colors, including verdigris and silver, and works with a number of patinas. His Facet cocktail table has a top that comes in black or white mother-of-pearl, or crystal. Hutton has eight different types of crystal that he uses for his designs. Enid Ford Atelier, 101 Henry Adams St., San Francisco, CA 94103; 415/255-1777.



Left, Gary Hutton at Enid Ford; above, his Facet cocktail table



At Bradford Stewart, the Poolside chair and Leather Strap stool

## CALIFORNIA AESTHETIC

**F**or the past seven years **Bradford Stewart** has specialized in what he calls "timeless, clean-lined designs." "Our pieces will still be in fashion two generations from now," he says. "We make a statement with our furniture, but our goal is to never be trendy."

Among the designers he numbers as clients is **Sally Sirkin Lewis**, who favors Stewart's outdoor lines. The Oakland, California-based firm recently introduced new looks to its inventory. The Poolside Aluminum collection, for example, features sleek tables, chairs, benches, ottomans and chaise longues. The Leather Strap col-

lection is a group of tables and benches for indoor use. Stewart's father, Kipp Stewart, has been designing for the company since its inception. Bradford Stewart Furniture, 2200 Adeline St., Oakland, CA 94607; 510/835-1365.



*continued on page 118*