



Phoebe Yoke

by Lisa R. Myers



SIZE

8" deep from base of neck at front to bottom edge; approx.
66" circumference at bottom edge

MATERIALS

Manos del Uruguay FINO (70% extrafine merino, 30% silk;
approx. 100g / 490 yds), 1 sk MC plus 1 Mini-Skein Kit.

Shown in 456 Malachite (MC) with #14 Phoebe [433 Folly
(CC5), 404 Watered Silk (CC1), 413 Rosewater (CC2),
410 Pocketwatch (CC4), 419 Brass Button (CC3)].

US 5 / 3.75mm circular needles, 16" and 29", or
size to obtain gauge

Ring marker

Tapestry needle

GAUGE

24 sts = 4" in Stockinette St

ABBREVIATIONS

BOR: beginning of round

CC: contrast color

k: knit

m: marker

m1: insert left needle under horizontal strand between stitch
just worked and next stitch from the front to back, knit
through the back loop to twist it (1 stitch increased)

MC: main color

p: purl

rep: repeat(s), repeating

rnd(s): round(s)

RS: right side

sl: slip

st(s): stitch(es)

W&T: move yarn between needles to other side of work,
slip next stitch purlwise from left needle to right, return yarn
between needles to original position, return stitch from right
needle to left, turn work. When you come to the wrapped
stitch on a later round, insert tip of right needle under wrap
and then into stitch and knit both together.

INSTRUCTIONS

With shorter needle and MC, cast on 176 sts. Join, being
careful not to twist, and place m to show BOR. Work in k2,
p2 rib for 6", then knit 1 rnd.

Short-row 1: K40, W&T.

Short-row 2: P114, W&T.

Short-row 3: Knit to 10 sts before wrapped st, W&T.

Short-row 4: Purl to 10 sts before wrapped st, W&T.

Rep short-rows 3 and 4 twice more. Then knit to end of rnd,
working wraps together with sts as you come to them. Knit 1
rnd, working any remaining wraps together with their sts as
you come to them.

Change to longer needle as you work first increase rnd: *K2,
m1; rep from * to end of rnd. (264 sts)

Join CC1 and work Chart A. (352 sts at end of Rnd 16)

Work Chart B. (396 sts at end of Rnd 23)

Work Chart C.

At end of Rnd 24, break CC and knit 2 rnds with MC. Work 3
rnds of k2, p2 rib, then BO in rib.

FINISHING

Weave in ends. Block to finished measurements.

Chart A

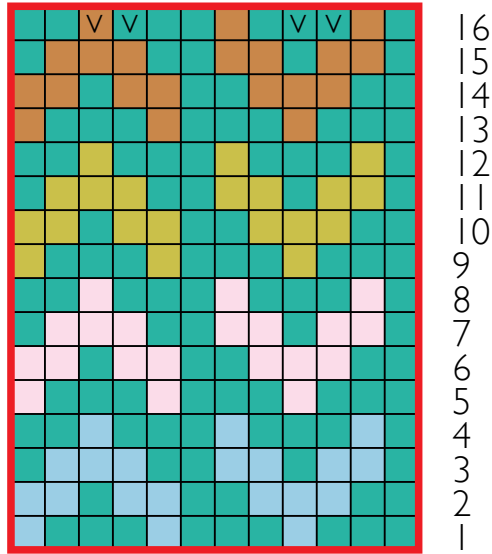


Chart B

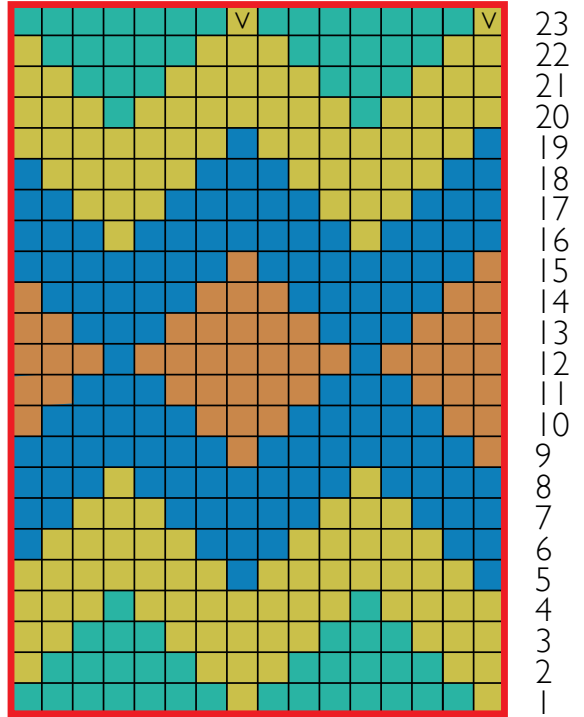
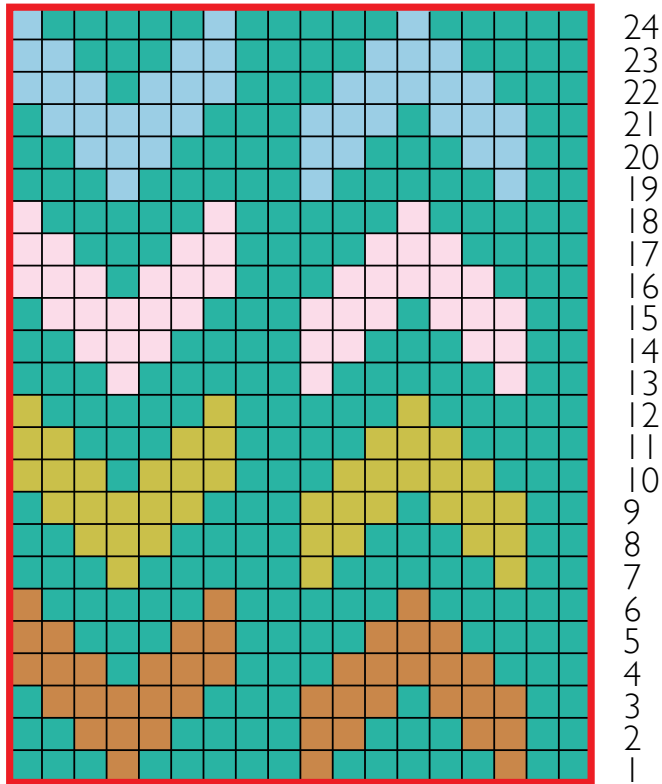


Chart C



Key

- knit with MC (Malachite)
- knit with CC1 (Watered Silk)
- knit with CC2 (Rosewater)
- knit with CC3 (Brass Button)
- knit with CC4 (Pocketwatch)
- knit with CC5 (Folly)
- v knit with color indicated, then m1 with MC (increases 1 st)
- Pattern Repeat