



MANOS DEL URUGUAY

## *Theodora Shawl*

by Lisa R. Myers





*SIZE*

29" from back neck to bottom of center point and 60" across after blocking

*MATERIALS*

Manos del Uruguay LACE (70% baby alpaca, 25% silk, 5% cashmere; 50g, approx. 439 yds), 2 skeins. Shown in 8597 Ariel.

29" circular needles, US3/3.25mm or size needed to obtain gauge

ring markers

stitch marker

*GAUGE*

Approx. 27 sts = 4"/10cm over blocked lace pattern

*NOTE*

Center st of shawl does not appear on chart. Each row is worked once before and once after the center st.

*ABBREVIATIONS*

cont: continue

k: knit

k2tog: knit 2 together

pm: place marker

rep: repeat

s2kp: slip two stitches together knitwise, knit one, pass two slipped stitches over

sl: slip

slm: slip marker wyib: with yarn in back

ssk: slip, slip, knit (slip 2 stitches, one at a time as if to knit, to the right needle, insert the left needle into the fronts of these two stitches and knit them together)

st(s): stitch(es)

WS: wrong side

yo: yarn over





*INSTRUCTIONS*

Provisionally cast on 3 sts.

Row 1: sll purlwise wyib, k2.

Rep this row 5 times more.

Next row: k3, pm, pick up 3 sts along side edge, pm, place sts from provisional cast on back on needle and k3. [9 sts]

Set-up row and all WS rows: sll, k2, slm, p to last m, slm, k3.

Row 1: Sll, k2, slm, work Row 1 of Chart A, mark next st as center st and knit it, work Row 1 again, slm, k3.

Cont working from Chart A through Row 8 (WS row), working charted sts once before and once after center st and keeping edge sts in garter st. [25 sts]

Now work Rows 1-16 of Chart B 7 times, working each row once before and once after center st and adding repeats as increased sts allow. [249 sts]

Change to Chart C, working each row once before and once after the center st. Work rows 1 through 77. [405 sts]

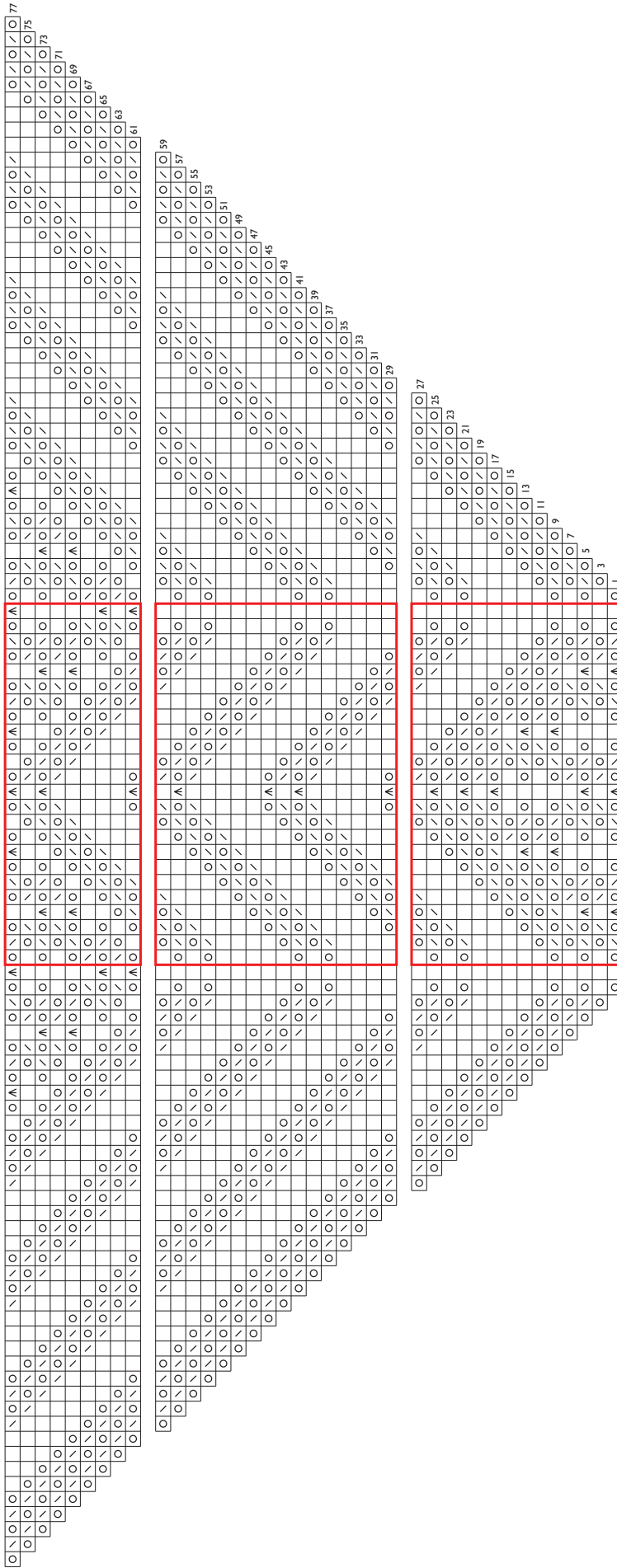
Knit 4 rows. Bind off all sts loosely knitwise.

*Finishing*

Wet block shawl, pin to measurements. Weave in ends.



Chart C



Key

- k
- ssk
- yo
- s2kp
- k2tog
- pattern repeat

Chart B

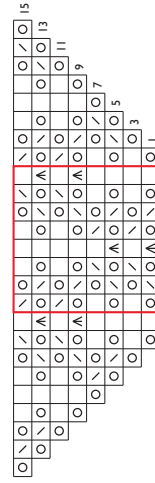


Chart A

