



Cygnus Cowl

by Meredith Collins



SIZES

26" finished circumference x 7½" deep

MATERIALS

Manos del Uruguay SAMI (100% superwash merino wool; approx 273yds / 100g), 1 sk

Manos del Uruguay MARLA (100% superwash merino wool; approx 273yds / 100g), 1 sk

Shown in Sami Y2150 Bing Cherry (A) and Marla K201 Tabac (B)

US 4/3.5mm 16" circular needle; or size needed to obtain gauge in stockinette

US 6/4mm 16" circular needle; or size needed to obtain gauge in stranded colorwork

Spare US 4/3.5mm 16" circular needle, or smaller, for closing graft

1 stitch marker

Crochet hook for provisional cast-on (G/4mm)

Tapestry needle

Waste yarn

GAUGE

26 stitches and 37 rounds = 4" in Stockinette St on size US4/3.5mm

26 stitches and 70 rounds = 4" in Stranded Colorwork on size US6/4mm

ABBREVIATIONS

BOR: beginning of round

CO: cast on

cont: continue

k: knit

ndl(s): needle(s)

rep(s): repeat(s)

rnd(s): round(s)

st(s): stitch(es)

WY: waste yarn

NOTES

This cowl is started with a provisional cast-on and knit in the round, making a long tube. When complete, the two ends of the tube are brought together and grafted, creating a seamless closure.



INSTRUCTIONS

With smaller 16" ndl, crochet hook, and waste yarn, provisionally CO 97 sts.

Place BOR marker, and with A, join in the round being careful not to twist.

Knit 1 rnd.
Next rnd: K2tog, k 95. (96 sts)

Switch to larger 16" ndl, and joining B, work rnds 1-8 of Chart A

Rep rnds 1-8 of chart A 7 times more for a total of 8 chart reps or 9", ending with Rnd 8.

Cut A.

Switch to smaller 16" ndl, and with B, knit for 4", or desired length.

Switch to larger 16" ndl, and joining A, work rnds 1-8 of Chart B.

Rep rnds 1-8 of Chart B 7 times more for a total of 8 chart reps or 9", ending with Rnd 8.

Cut B.

Switch to smaller 16" ndl, and with A, knit for 4", or desired length.

Cut A leaving a tail about 50" long for seaming.

FINISHING

Before seaming, weave in the ends and block if desired.

Closing the cowl:

Carefully thread the spare smaller 16" ndl into the first rnd of sts after WY. Remove WY. (96 sts)

Bring both ends of the cowl together matching the CO sts with the working sts. You will now have two ndls parallel to each other, one in front and one behind.

With A and tapestry needle, graft the cowl closed.

- knit with A
- knit with B
- pattern repeat

Chart A

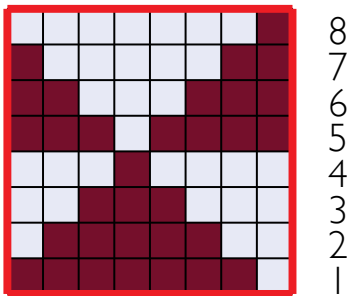


Chart B

