



Amelia Hat

by Quinn Reverendo



SIZES

Adult Medium (Large): 19" (21") circumference x 8" (8½") depth

MATERIALS

Manos del Uruguay FINO MINI-SKEINS (70% superfine merino wool, 30% silk; 5 mini-skeins, each approx. 98 yds/20g; entire set approx. 490 yds/100 g)

Shown in Fino Mini-Skein Kit #23 Amelia [415 Silver Teaset (C5), 444 Topsy Turvy (C4), 456 Malachite (C2), 425 Fascinator (C3), 429 Stormglass (C1)]

US 2/2.75mm 16" circular needle

US 3/3.25mm 16" circular and double-pointed needles, or size needed to obtain gauge

Spare 16" circular needle, US 2 or smaller

15 ring markers, including one unique color to show beginning of round

Waste yarn

Tapestry needle

GAUGE

32 stitches and 34 rounds = 4" over chart pattern and plain stockinette

Note: you may find the need to drop down in needle size in plain stockinette to match gauge over chart pattern.

ABBREVIATIONS

k: knit

k2tog: knit 2 stitches together (1 stitch decreased)

m: marker(s)

ndl: needle

p: purl

pm: place marker

rep: repeat(s), repeating

rnd(s): round(s)

slm: slip marker

st(s): stitch(es)

INSTRUCTIONS

Using the smaller ndl and waste yarn, provisionally cast on 156 (168) sts. Join, being careful not to twist, and pm to show beginning of rnd; continue with C4.

Rnd 1: *K1, p1; rep from * to end of rnd.

Repeat Rnd 1 for 1 (1½)".

Next rnd: Purl.

Break C4. With C1, knit 1 rnd, then rep Rnd 1 for 1 (1½)".

Remove provisional cast-on and put open sts on spare ndl; hold behind main ndl.

With larger ndl, knit together 1 st from front ndl with 1 st from back ndl. Rep around to close hem.

Knit 1 rnd. 156 (168) sts.

Work Chart, joining in and breaking off colors as needed.

Change needle size for plain Stockinette gauge if necessary.

Change to dpn when necessary.

Rnd 1: Knit.

Rnd 2: *K12, pm; rep from * to end of rnd.

Rnd 3: *K to 2 sts before m, k2tog, slm; rep from * to end of rnd. (13 [14] sts decreased)

Rnd 4: Knit.

Repeat rnds 3-4 five more times. 78 (84) sts.

Repeat Rnd 3 four more times. 26 (28) sts.

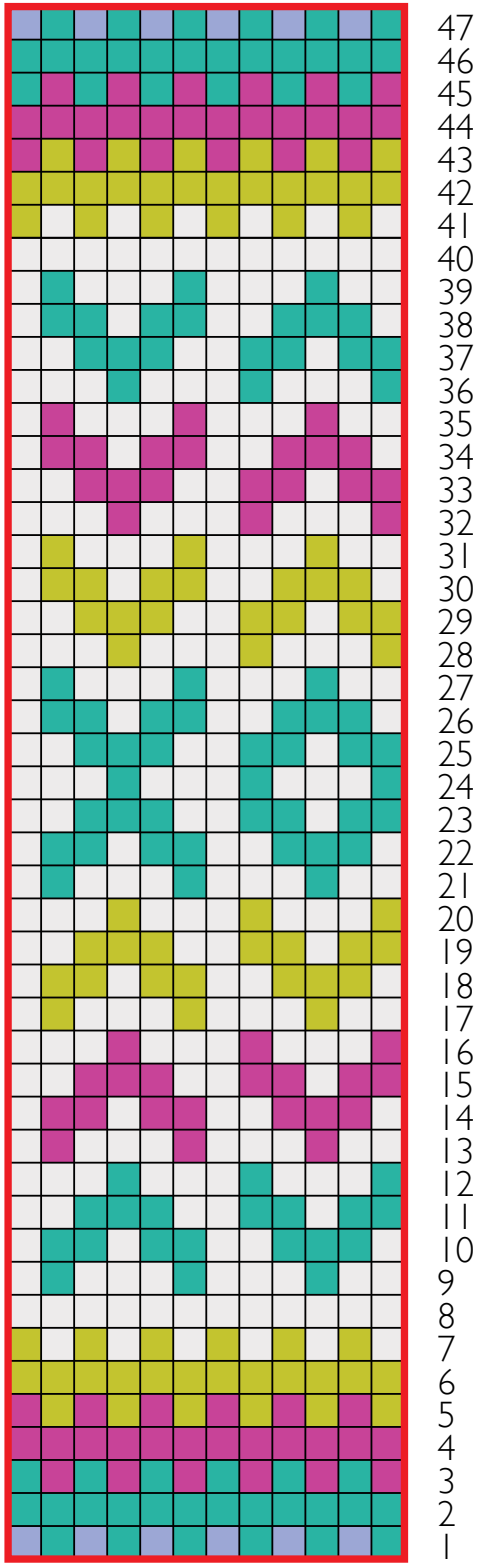
Next rnd: K2tog around. 13 (14) sts.

Break yarn, leaving about 10" tail. Pull through remaining sts using a tapestry needle. Pull tight, closing the gap.

FINISHING

Weave in ends. Block if desired.

Colorwork Chart



47
46
45
44
43
42
41
40
39
38
37
36
35
34
33
32
31
30
29
28
27
26
25
24
23
22
21
20
19
18
17
16
15
14
13
12
11
10
9
8
7
6
5
4
3
2
1

Key

- knit with C1 (Stormglass)
- knit with C2 (Malachite)
- knit with C3 (Fascinator)
- Knit with C4 (Topsy-Turvy)
- Knit with C5 (Silver Teaset)