

Virgule

by Bristol Ivy



MANOS DEL URUGUAY

SIZE

Width: 13.25"

Length: 58.5"

MATERIALS

Manos del Uruguay SILK BLEND (70% superfine merino wool, 30% silk; approx. 50g/150 yds), 4 sk of MC, 1 sk each of CCI and CC2

Shown in MC: #300U Rust; CCI: #3044 Briar; CC2: #3214 Oxygen

US 7/4.5mm ndl: 32" circular, or size needed to obtain gauge
tapestry needle

GAUGE

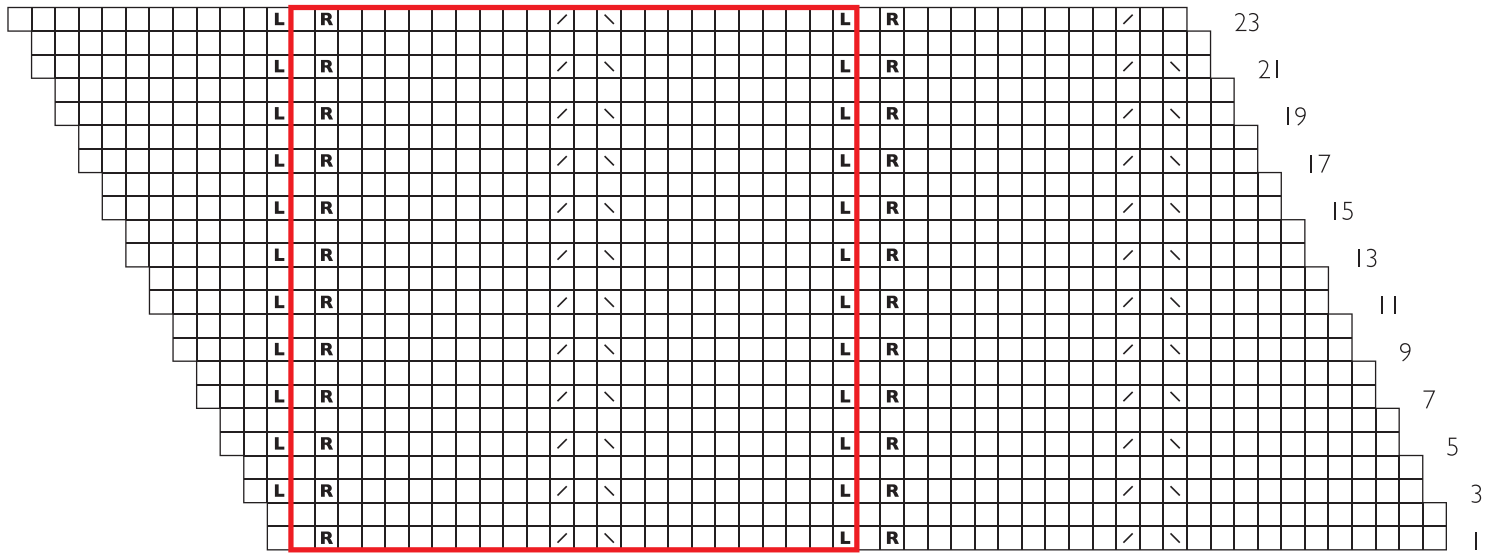
22 sts and 30 rows = 4" in Stockinette stitch.

NOTES

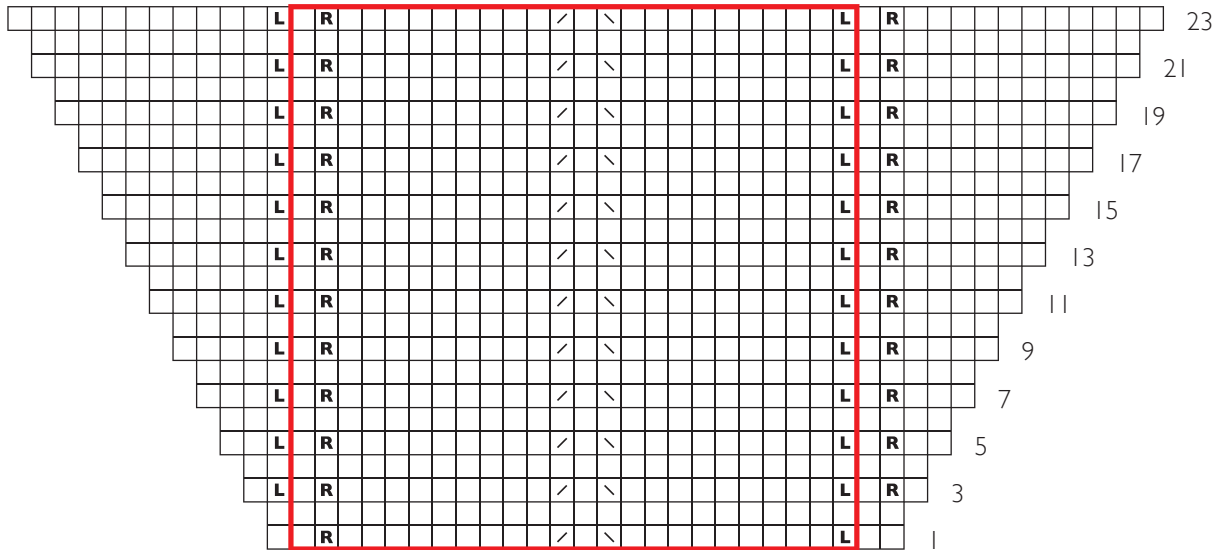
Circular needle is used to accommodate large number of sts and changes of direction in fabric. Do not join; work back and forth in rows.



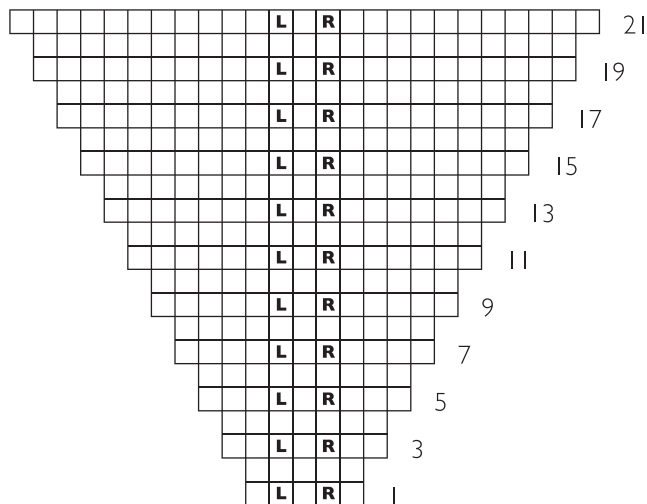
SECTION C CHART



SECTION B CHART



SECTION A CHART



- knit on RS, purl on WS
- L** MIL
- R** MIR
- k2tog
- ssk
- pattern repeat

ABBREVIATIONS

BO: bind off

CO: cast on

CC: contrast color

k: knit

k2tog: knit 2 stitches together

m: marker

MIL: insert left needle under horizontal strand between stitch just worked and next stitch from the front to the back, knit through the back loop

MIR: insert left needle under horizontal strand between stitch just worked and next stitch from the back to the front, knit through the front loop

MC: main color

ndl(s): needle(s)

RS: right side

p: purl

ssk: slip 2 stitches, 1 at a time, knitwise to the right needle.

Return stitches to the left needle in turned position then knit them together through the back loops

st(s): stitch(es)

WS: wrong side

STITCH GUIDE

Stripe Sequence 1

Rows 1-4: Work in CCI.

Rows 5-14: Work in MC.

Rows 15-18: Work in CC2.

Rows 19-20: Work in MC.

Rows 21-22: Work in CC2.

Rows 23-24: Work in MC.

Stripe Sequence 2

Rows 1-4: Work in CCI.

Rows 5-24: Work in MC.

Rows 25-28: Work in CC2.

Rows 29-32: Work in MC.

Rows 33-34: Work in CC2.

Rows 35-38: Work in MC.

Stripe Sequence 3

Rows 1-4: Work in CCI.

Rows 5-44: Work in MC.

Rows 45-48: Work in CC2.

Rows 49-56: Work in MC.

Rows 57-58: Work in CC2.

Rows 59-66: Work in MC.

Rows 67-70: Work in CCI.

Rows 71-90: Work in MC.

Cable Cast-on Method

*Insert right ndl between first 2 sts on left ndl, k1 from this position, leave the first st on left ndl and slip new st onto left ndl; repeat from * for desired number of sts.

INSTRUCTIONS

SHAWL

(Note: Read the following instructions carefully before beginning, the stripe sequences and shawl begin at the same time.)

Stripe Sequence:

Work Stripe Sequence 1 six times, work Stripe Sequence 2 two times, work Stripe Sequence 3 one time; AND AT THE SAME TIME, shape shawl as follows:

Shawl

With CCI, CO 3 sts. (This counts as Row 1 of Stripe Sequence 1.)

Set-Up Row (WS): P3.

Section A

Starting with Row 3 of Stripe Sequence 1, work Rows 1-21 of Section A Chart. [25 sts]

At end of Row 21, turn so WS is facing, then use the cable method and working yarn to CO 13 sts. [38 sts]

Next Row (WS): Purl to end, turn so RS is facing, then use the cable method and working yarn to CO 13 sts. [51 sts]

Section B

*Work Rows 1–23 of Section B Chart, working bracketed repeat twice per row. [73 sts]

At end of Row 23, turn so WS is facing, then use the cabled method and working yarn to CO 13 sts. [86 sts]*

Next Row (WS): Purl to end, turn so RS is facing, then use the cable method and working yarn to CO 13 sts. [99 sts]

Repeat from * to * once more, working bracketed repeat 4 times per row. [134 sts]

Next Row (WS): Purl to end.

Section C

Next Row (RS): BO 11 sts, then work Row 1 of Section C Chart, working bracketed repeat 4 times per row. [122 sts]

Continue to work Rows 2–23 of Section C Chart, working bracketed repeat 4 times per row.

At the end of Row 23, turn so WS is facing, then use the cable method and working yarn to CO 13 sts. [135 sts]

Next Row (WS): Purl to end.

Next Row (RS): **BO 13 sts, then work Row 1 of Section C Chart, working bracketed repeat 4 times per row. [122 sts]

Continue to work Rows 2–23 of Section C Chart, working bracketed repeat 4 times per row.

At the end of Row 23, turn so WS is facing, then use the cable method and working yarn to CO 13 sts. [135 sts]

Next Row (WS): Purl to end.**

Repeat from ** to ** 8 more times.

FINISHING

BO all sts knitwise loosely. Weave in all ends and block to measurements.

