

Maresme

cowl & mitts

by Ruth Garcia-Alcantud



MANOS DEL URUGUAY



rock + purl
www.rockandpurl.com

All efforts were made to make this pattern error-free. For questions or support, please email info@fairmountfibers.com

© Fairmount Fibers Ltd. 2015 Not to be reproduced or re-knit for profit

SIZE

Cowl:

Circumference: 39"

Width: 5.25"

Mitts:

Hand Circumference: 6 (7.25, 8.75)"

Length: 10.75"

Mitts shown meas 7.25" circumference.

To be worn with slight positive ease for a slouchy look.

MATERIALS

Manos del Uruguay FINO (70% superfine merino wool, 30% silk; approx. 100 g/490 yds): 2 sk (1 sk ea for cowl and mitts).

Shown in: #408 Crystal Goblet

Cowl:

US 4/3.5mm set of 4 or 5 double pointed, or size needed to obtain gauge.

waste yarn and crochet hook for provisional cast on
stitch markers

cable needle

tapestry needle

Mitts:

US 2 / 2.75mm double pointed needles, or size needed to obtain gauge.

stitch markers (1 distinct color for beg of rnd)

cable needle

stitch holder or waste yarn

smooth waste yarn and crochet hook for provisional cast-on

tapestry needle

GAUGE

Cowl:

28 sts and 40 rnds = 4" in Garter stitch.

Mitts:

36 sts and 49 rnds = 4" in Stockinette stitch.

37 sts and 50 rnds = 4" in Garter stitch.

8 sts = 1" in Right and Left Charts.

ABBREVIATIONS

2/1LC: sl 2 sts to cn and hold in front, k1, k1 from cn

2/2LC: sl 2 sts to cn and hold in front, k2, k2 from cn

2/1RC: sl 1 st to cn and hold in back, k2, k1 from cn

2/2RC: sl 2 sts to cn and hold in back, k2, k2 from cn

2/1RPC: sl 1 to cn and hold in back, k2, p1 from cn

2/1LPC: sl 2 sts to cn and hold in front, p1, k2 from cn

2/2RPC: sl 2 sts to cn and hold in back, k2, p2 from cn

2/2LPC: sl 2 sts to cn and hold in front, p2, k2 from cn

2/2RC: sl 2 sts to cn and hold in back, k2, k2 from cn

2/2LC: sl 2 sts to cn and hold in front, k2, k2 from cn

beg: begin(ning)

BO: bind off

cn: cable needle

CO: cast on

decr: decrease

dpn(s): double pointed needle(s)

incr: increase

k: knit

k2tog: knit 2 stitches together

m: marker

m1: insert left ndl under horizontal strand between st just worked and next st from the front to the back, knit through the back loop (1 stitch increased)

ndl(s): needle(s)

p: purl

pm: place marker

rnd(s): round(s)

sl: slip

ssk: slip 2 stitches, 1 at a time, knitwise to the right needle.

Return stitches to the left needle in turned position then knit them together through the back loops

st(s): stitch(es)

wyib: with yarn in back

STITCH GUIDE

Garner Stitch (worked in the rnd)

Rnd 1: Knit.

Rnd 2: Purl.

Repeat rnds 1 and 2 for pattern.

K1, p1 Rib: (multiple of 2 sts)

Rnd 1: *K1, p1; repeat from *.

Repeat rnd 1 for pattern.

Provisional Cast-on Method

With waste yarn, beg with slipknot on crochet hook.

*Wrap yarn around knitting needle counter-clockwise, then use crochet hook to draw yarn through loop on hook; repeat from * for desired number of sts. Fasten off.

Kitchener Stitch

Step 1: Bring threaded tapestry needle through first stitch on front needle as if to purl and leave stitch on needle.

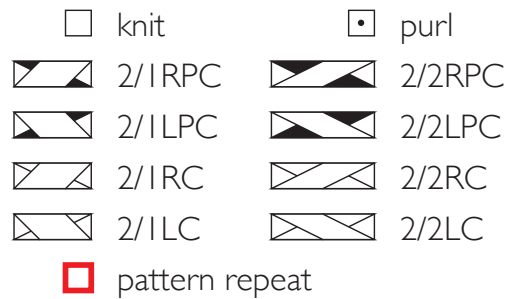
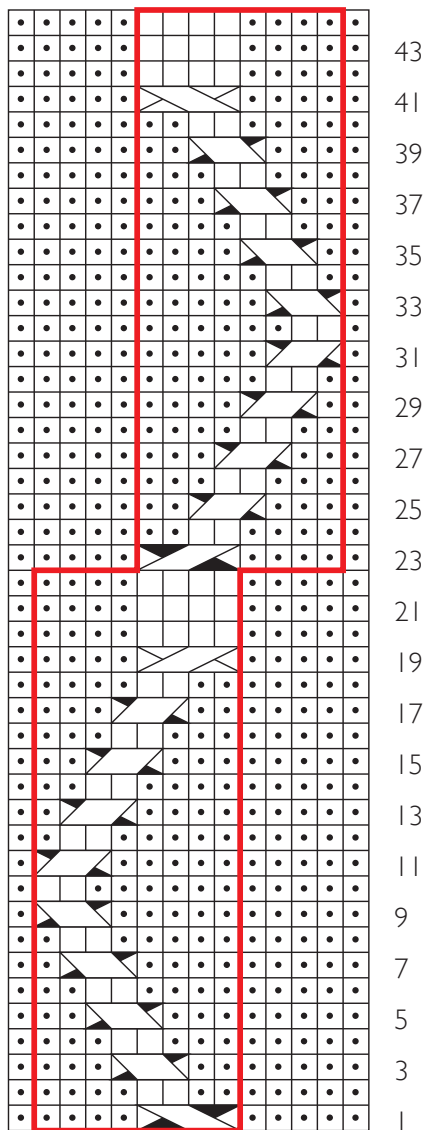
Step 2: Bring threaded tapestry needle through first stitch on back needle as if to knit and leave stitch on needle.

Step 3: Bring threaded tapestry needle through first stitch on front needle as if to knit and slip this stitch off needle, then bring tapestry needle through next stitch on front needle as if to purl and leave stitch on needle.

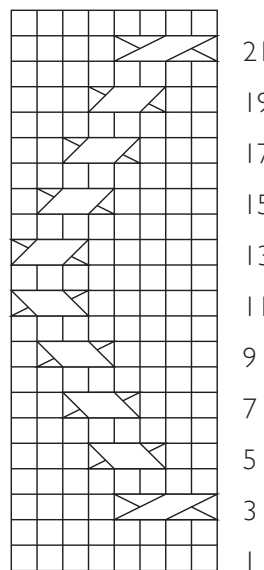
Step 4: Bring threaded tapestry needle through first stitch on back needle as if to purl and slip this stitch off needle, then bring tapestry needle through next stitch on back needle as if to knit and leave stitch on needle.

Repeat Steps 3 and 4 until no stitches remain on needles.

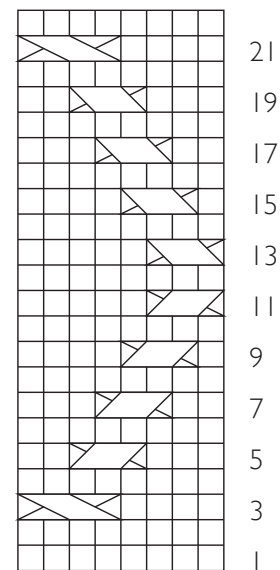
COWL CABLE CHART



LEFT MITT CHART



RIGHT MITT CHART





COWL NOTES

For a wider cowl, cast on extra multiples of 16 and distribute them as follows: 1 extra chart repeat of 8 sts on the first half of the rnd, 8 extra garter sts on the second half of the rnd. For a longer cowl, make extra repeats of the cable chart before grafting. Be conscious and purchase extra yarn for bigger projects.

INSTRUCTIONS

COWL

Use a provisional method to CO 80 sts. Distribute sts evenly over 3 or 4 dpns. Pm for beg of rnd. Join to work in the rnd being careful not to twist.

Establish Cowl Cable Chart

Rnd 1: K2, work Cowl Cable Chart over 38 sts, (pm if desired for middle of rnd), k2, purl to end.

Rnd 2: Sl 2 sts purlwise wyib, work Cowl Cable Chart over 38 sts, sl 2 sts purlwise wyib, knit to end.

Continue working as established until rnds 1–44 of Cowl Cable Chart have been completed 8 times.

Carefully unzip provisional cast-on sts and place sts on the needles. Break yarn leaving a long tail, thread on tapestry needle and use the kitchener st to graft live sts on the needles to cast-on edge.

FINISHING

Block to measurements. Weave in ends.

MITT NOTES

Mitts are constructed from the top down, creating an anatomically correct thumb gusset. The length is personal—as presented, the mitts used less than 1 skein, but they can be continued to make long arm warmers if desired. To use every inch of yarn, wind 10g away to be used for the thumbs and split the skein into 2 even amounts.

Both hands are constructed the same way, with the only difference being the pattern placement rounds.

INSTRUCTIONS

RIGHT MITT

CO 54 (66, 78) sts. Distribute sts evenly over 3 or 4 dpns. Pm for beg of rnd. Join to work in the rnd being careful not to twist.

Work k1, p1 rib for 10 rnds.
Knit 1 rnd.

Establish cable chart and thumb gusset

Rnd 1: K2, work 8 sts in Right Chart, k1 6 (22, 26), pm for thumb, k2, pm for thumb, knit to end.

Rnd 2: K2, work 8 sts in Right Chart, [knit to m, sl m] twice, purl to end.

Work 4 more rnds as established, ending after rnd 6 of Chart.

Shape thumb gusset

Incr Rnd: Work in pattern to m, sl m, m1, knit to m, m1, sl m, work in pattern to end. [2 sts increased]

[Work 2 rnds even in pattern, then repeat incr rnd] 2 (3, 4) times. [60 (74, 88) sts]

Work 3 rnds even.

Next Rnd: Work in pattern to m, sl m, k1, place 6 (8, 10) sts onto st holder or waste yarn, use a provisional method to CO 12 (14, 16) sts, k1, sl m, work in pattern to end. [66 (80, 94) sts]

Work 10 rnds even in pattern, knitting thumb gusset sts between markers.

Decr Rnd: Work in pattern to m, sl m, ssk, knit to 2 sts before m, k2tog, sl m, work in pattern to end. [2 sts decreased]

[Work 2 rnds even in pattern, then repeat decr rnd] 5 (6, 7) times. [54 (66, 78) sts remain]

Cont working even in pattern until rnds 1–22 of Chart have been completed a total of 5 times.

Work in k1, p1 Rib for 10 rnds.
BO in patt.

Thumb

Return held 6 (8, 10) sts to dpn and pm in the center of them for beg of rnd. Carefully unzip provisional cast-on and divide 12 (14, 16) sts over 2 dpns. Join yarn to work in the rnd. [18 (22, 26) sts]

Decr Rnd: K2, ssk, knit to last 4 sts, k2tog, k2. [2 sts decreased]

Repeat last rnd once more. [14 (18, 22) sts remain]

Knit 2 rnds.

Work in k1, p1 Rib for 5 rnds.
BO in pattern.

LEFT MITT

Work same as for right mitt until the chart is established.

Establish cable chart and thumb gusset

Rnd 1: K26 (32, 40) sts, pm for thumb, k2, pm for thumb, k16 (22, 26), work 8 sts in Left Chart, k2.

Rnd 2: P26 (32, 40) sts, sl m, k2, sl m, k 16 (22, 26), work 8 sts in Left Chart, k2.

Continue working the same as the right mitt.

FINISHING

Block pieces to measurements. Weave in ends.

