

Calida

by Ruth Garcia-Alcantud



MANOS DEL URUGUAY



rock + purl
www.rockandpurl.com

All efforts were made to make this pattern error-free. For questions or support, please email info@fairmountfibers.com

© Fairmount Fibers Ltd. 2015 Not to be reproduced or re-knit for profit

SIZES

Finished Bust Circumference: 29 (34.5, 40.75, 45.5, 50.25, 55.25)"

Length: 21.75 (22.75, 23.75, 24.5, 25.75, 27)"

Sweater shown measures 34.5".

Sweater is designed to be worn with minimum 2" of positive ease.

MATERIALS

Manos del Uruguay SERENA (60% baby alpaca, 40% pima cotton; approx 50 g/170 yds): 5 (6, 7, 7, 8, 9) sk

Shown in: #S2302 English

US 2/2.75mm two 16" circular ndls, or size needed to obtain gauge.

US 2.5/3mm 24" circular ndl, or size needed to obtain gauge.

US 3/3.25mm 24" circular ndl, or size needed to obtain gauge.
stitch markers

waste yarn

US D-3/3.25mm crochet hook

cable needle

tapestry needle

GAUGE

28 sts and 37 rows = 4" in Stockinette stitch with US 3/3.25mm ndl.

39 sts and 40 rows = 4" in cabled pattern with US 2.5/3mm ndl.

40 sts and 40 rows = 4" in 1x1 rib with US 2/2.75mm ndl.

NOTES

Circular needle is used to accommodate large number of sts.
Do not join; work back and forth in rows.

ABBREVIATIONS

3/2 RC: Sl 2 sts to cn and hold in back; k3; k2 from cn

3/2 LC: Sl 3 sts to cn and hold in front; k2; k3 from cn

3/3 RC: Sl 3 sts to cn and hold in back; k3; k3 from cn

beg: begin(ning)

BO: bind off

cn: cable needle

CO: cast on

k: knit

k2tog: knit 2 stitches together

m1: insert left needle under horizontal strand between stitch just worked and next stitch from the front to the back, knit through the back loop

ndl(s): needle(s)

p: purl

pm: place marker

RS: right side

sl: slip

ssk: slip 2 stitches, 1 at a time, knitwise to the right needle.

Return stitches to the left needle in turned position then knit them together through the back loops

st(s): stitch(es)

WS: wrong side

wyib: with yarn in back

wyif: with yarn in front

STITCH GUIDE

Tubular cast-on

With waste yarn, crochet a chain of minimum half the sts required and fasten off. With working yarn, use knitting needle to pick up and knit 1 st in each crochet chain for half of the sts required. Beg with a purl row, work 5 rows in St st, ending after a WS row.

Next Row (RS): K1, *at the back of the work, use left hand needle to pick up the first horizontal bar of working yarn between the sts then purl into it, k1; repeat from * to end, then pick up the side of the last st as the final picked up st and purl into it. Remove waste yarn.

Crochet chain

Begin with a slip knot on crochet hook. *Wrap yarn around crochet hook and draw it through the loop on the hook to form the first chain; repeat from * as many times as instructed. (The loop on the hook is never included when counting the number of chains)

Stockinette Stitch (over any number of sts)

Row 1 (WS): Purl.

Row 2 (RS): Knit

Repeat rows 1 and 2 for pattern.

1x1 Rib (multiple of 2 sts)

Row/Rnd 1: *K1, p1; repeat from *.

Repeat Row/Rnd 1 for pattern.

Cable Pattern (multiple of 32 sts)

(also, see chart)

Row 1 (RS): *K4, 3/2 RC, p2, 3/2 RC, 3/2 LC, p2, 3/2, LC, k4; repeat from *.

Row 2: *P7, k4, p10, k4, p7; repeat from *.

Row 3: *K2, 3/2 RC, p2, 3/2 RC, k4, 3/2 LC, p2, 3/2 LC, k2; repeat from *.

Row 4: *P5, k4, p14, k4, p5; repeat from *.

Row 5: *3/2 RC, p2, 3/2 RC, k8, 3/2 LC, p2, 3/2 LC; repeat from *.

Rows 6, 8, 10 and 12: *P3, k4, p18, k4, p3; repeat from *.

Rows 7 and 11: K3, p4, k18, p4, *3/3 RC, p4, k18, p4; repeat from * to last 3 sts, k3.

Row 9: *K3, p4, k18, p4, k3; repeat from *.

Row 13: *3/2 LC, p2, 3/2 LC, k8, 3/2 RC, p2, 3/2 RC; repeat from *.

Row 14: *P5, k4, p14, k4, p5; repeat from *.

Row 15: *K2, 3/2 LC, p2, 3/2 LC, k4, 3/2 RC, p2, 3/2 RC, k2; repeat from *.

Row 16: *P7, k4, p10, k4, p7; repeat from *.

Row 17: *K4, 3/2 LC, p2, 3/2 LC, 3/2 RC, p2, 3/2 RC, k4; repeat from *.

Rows 18, 20, 22 and 24: *P9, k4, p6, k4, p9; repeat from *.

Rows 19 and 23: *K9, p4, 3/3 RC, p4, k9; repeat from *.

Row 21: *K9, p4, k6, p4, k9; repeat from *.

Repeat Rows 1–24 for pattern.

Tubular bind-off

Rnds 1 and 3: *K1, sl1 purlwise wyif; repeat from *.

Rnds 2 and 4: *Sl1 purlwise wyib, p1; repeat from *.

When all 4 rnds are complete, separate the sts onto 2 smallest circular needles: all the knit sts on one at the front, all the purl sts on another at the back. Graft sts together using the kitchener stitch.

Kitchener Stitch

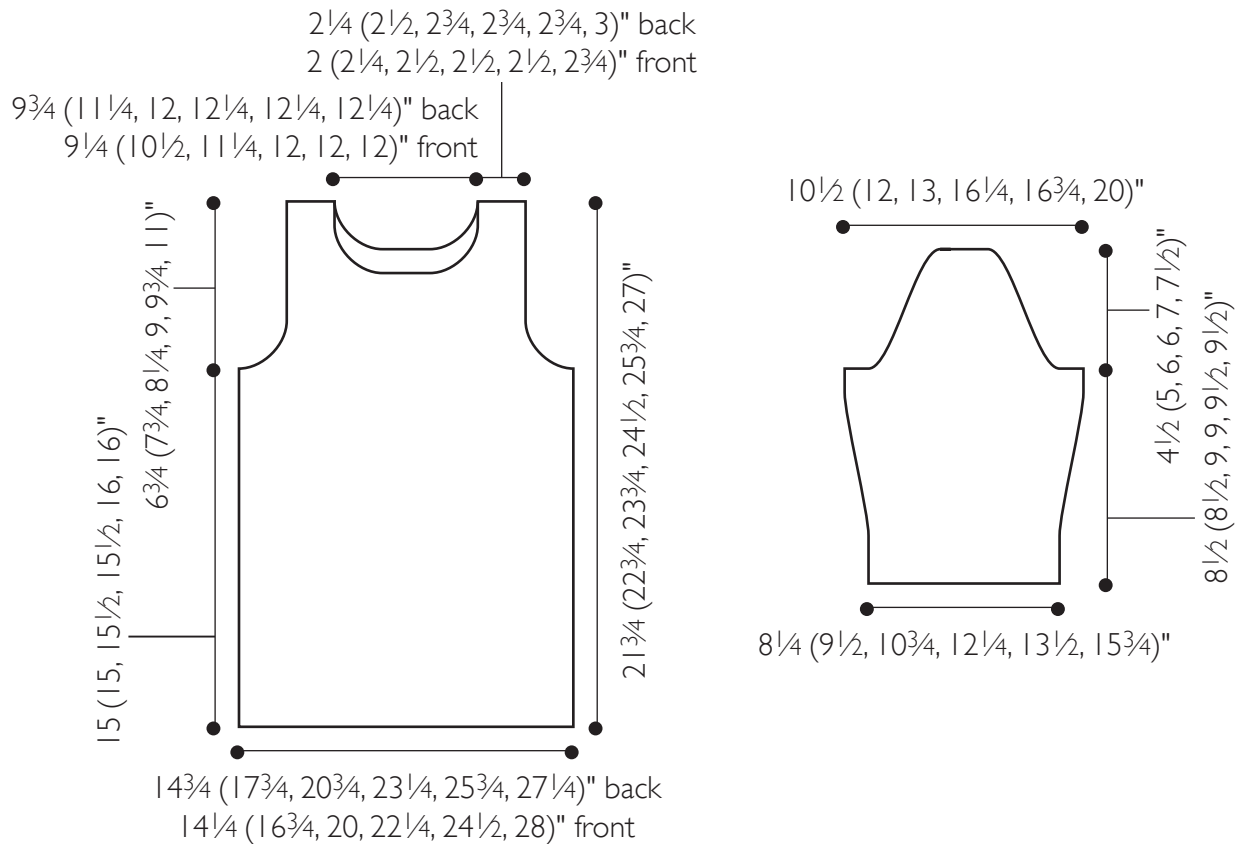
Step 1: Bring threaded tapestry needle through first stitch on front needle as if to purl and leave stitch on needle.

Step 2: Bring threaded tapestry needle through first stitch on back needle as if to knit and leave stitch on needle.

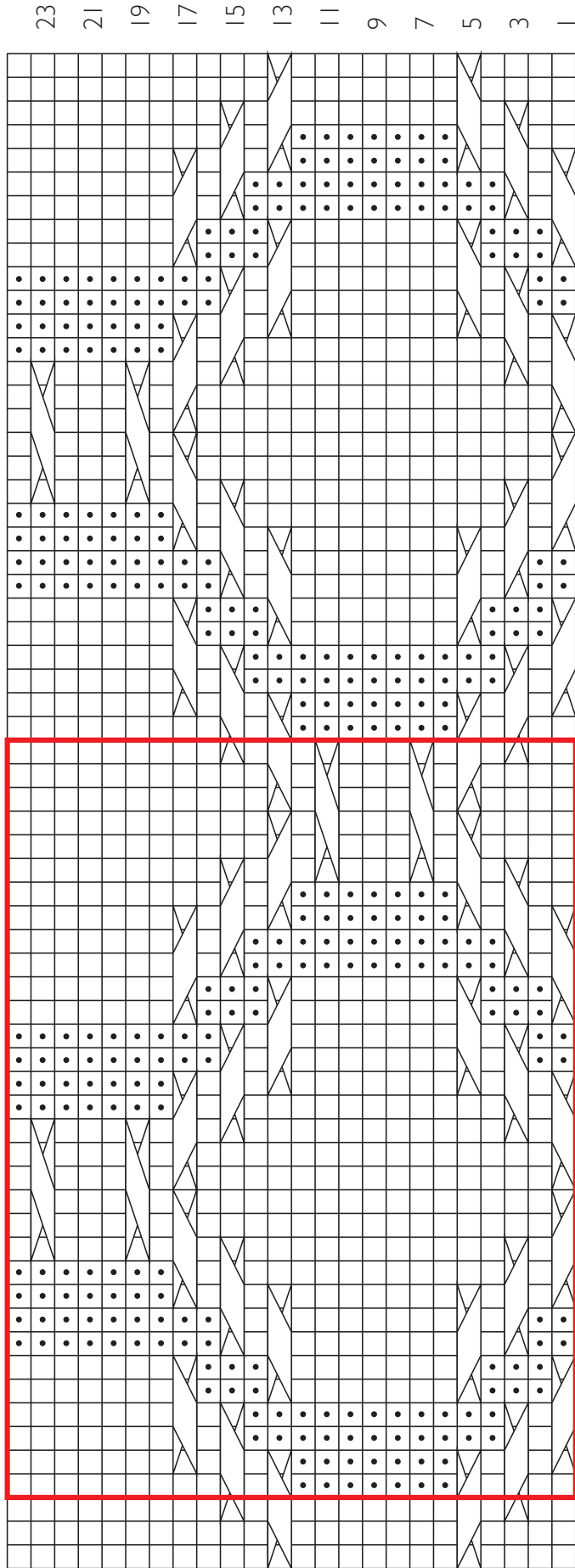
Step 3: Bring threaded tapestry needle through first stitch on front needle as if to knit and slip this stitch off needle, then bring tapestry needle through next stitch on front needle as if to purl and leave stitch on needle.





Step 4: Bring threaded tapestry needle through first stitch on back needle as if to purl and slip this stitch off needle, then bring tapestry needle through next stitch on back needle as if to knit and leave stitch on needle.

Repeat Steps 3 and 4 until no stitches remain on needles.



CABLE CHART



- knit on RS, purl on WS
- ◻ purl on RS, knit on WS
-  3/2 RC
-  3/2 LC
-  3/3 RC
-  pattern repeat

INSTRUCTIONS

BACK

With smallest circular ndl, use the Tubular Method to CO 104 (124, 146, 162, 180, 190) sts. Do not join; work back and forth in rows.

Work in 1x1 Rib until piece measures 2" from beg, ending after a WS row.

Change to largest circular ndl.

Work in St St until piece measures 15 (15, 15.5, 15.5, 16, 16)" from beg, ending after a WS row.

Shape Armholes

BO 1 (2, 3, 4, 7, 7) sts at the beg of next 6 (6, 8, 2, 8, 2) rows. [98 (112, 122, 154, 124, 176) sts remain]

Sizes - (-, -, 45.5, -, 55.25)" only:

BO - (-, -, 5, -, 8) sts at the beg of next 6 rows. [- (-, -, 124, -, 128) sts remain]

All Sizes:

Work even in St st until armhole measures 4.75 (5.75, 6.25, 7, 7.75, 9)", ending after a RS row.

Next Row (WS): P39 (46, 49, 50, 49, 51), pm, p20 (20, 24, 24, 26, 26), pm, purl to end.

Shape Right Back Neck

Next Row (RS): Knit to marker; turn leaving the rem sts unworked. [39 (46, 49, 50, 49, 51) sts]

BO 5 (7, 7, 8, 7, 7) sts at the beg of next 2 (2, 2, 1, 2, 2) WS rows, then BO 4 (4, 4, 7, 4, 4) sts at the beg of next 2 (3, 4, 1, 4, 4) WS rows, ending after a WS row. [21 (20, 19, 35, 19, 21) sts remain]

Sizes 29 (34.5, -, 45.5, -, -)" only:

Knit 1 RS row.

BO 3 (3, -, 4, -, -) sts at the beg of next 2 (1, -, 4, -, -) WS rows, ending after a WS row. [15 (17, -, 19, -, -) sts remain]

All Sizes:

Work even until armhole measures 6.75 (7.75, 8.25, 9, 9.75, 11)", ending after a WS row.

Shape Right Back Shoulder

Next Row (RS): BO 7 (8, 9, 9, 9, 11) sts, knit to end. [8 (9, 10, 10, 10, 10) sts remain]

Purl 1 WS row. BO remaining right shoulder sts.

Shape Left Back Neck

With RS facing, rejoin yarn to held sts and BO central 20 (20, 24, 24, 26, 26) sts, knit to end. [39 (46, 49, 50, 49, 51) sts]

Purl 1 WS row.

BO 5 (7, 7, 8, 7, 7) sts at the beg of next 2 (2, 2, 1, 2, 2) RS rows, then BO 4 (4, 4, 7, 4, 4) sts at the beg of next 2 (2, 4, 1, 4, 4) RS rows, ending after a RS row. [21 (20, 19, 35, 19, 21) sts remain]

Sizes 29 (34.5, -, 45.5, -, -)" only:

Purl 1 WS row.

BO 3 (3, -, 4, -, -) sts at the beg of next 2 (1, -, 4, -, -) RS rows, ending after a RS row. [15 (17, -, 19, -, -) sts remain]

All Sizes:

Work even until armhole measures 6.75 (7.75, 8.25, 9, 9.75, 11)", ending after a RS row.

Shape Left Back Shoulder

Next Row (WS): BO 7 (8, 9, 9, 9, 11) sts, purl to end. [8 (9, 10, 10, 10, 10) sts remain]

Knit 1 RS row. BO remaining sts.

FRONT

With smallest circular ndl, use the Tubular Method to CO 138 (164, 196, 216, 240, 272) sts. Do not join; work back and forth in rows.

Work in 1x1 Rib until piece measures 2" from beg, ending after a WS row.

Change to mid-size circular ndl.

Establish Pattern

Next Row (RS): Work 5 (2, 2, 12, 8, 8) sts in St st, pm, work 128 (160, 192, 224, 256) sts in Cable Pattern, pm, work 5 (2, 2, 12, 8, 8) sts in St st.

Continue working even as established until piece measures 15 (15, 15.5, 15.5, 16, 16)" from beg, ending after a WS row.

Shape Armholes

(Note: During and after armhole shaping, always keep a minimum of 2 sts in St st at the edges to aid when seaming.)

BO 2 (2, 3, 5, 6, 8) sts at the beg of next 2 (8, 12, 2, 4, 2) rows. [134 (148, 160, 206, 216, 256) sts remain]

Sizes 29 (-, -, 45.5, 50.25, 55.25)" only:

BO 1 (-, -, 4, 5, 7) sts at the beg of next 4 (-, -, 10, 10, 12) rows. [130 (-, -, 166, 166, 172) sts remain]

All Sizes:

Work even in pattern until armholes measure 3.75 (4.75, 5.25, 6, 6.75, 8)", ending after a RS row.

Next Row (WS): Work 55 (64, 68, 71, 70, 73) sts, pm for neck, work 20 (20, 24, 24, 26, 26) sts, pm for neck, work to end.

Shape Left Front Neck

Next Row (RS): Work to neck marker, turn, leaving the remaining sts unworked. [55 (64, 68, 71, 70, 73) sts]

BO 5 sts at the beg of next 2 (3, 3, 4, 3, 4) WS rows. [45 (49, 53, 51, 55, 53) sts remain]



Sizes - (34.5, 40.75, 45.5, 50.25, 55.25)" only:

BO 4 sts at the beg of next - (3, 3, 4, 5, 4) WS rows. [- (37, 41, 35, 35, 37) sts remain]

All Sizes:

BO 3 sts at the beg of next 5 (4, 4, 2, 2, 2) WS rows, then
BO 2 sts at the beg of next 5 (1, 2, 2, 2, 2) WS rows. [20 (23, 25, 25, 25, 27) sts remain]

Work even in pattern until armholes measure 6.75 (7.75, 8.25, 9, 9.75, 11)", ending after a WS row.

Shape Left Front Shoulder

Next Row (RS): BO 10 (11, 12, 12, 12, 14) sts, work to end.
[10 (12, 13, 13, 13, 13) sts remain]

Work 1 WS row. BO remaining left shoulder sts.

Shape Right Front Neck

With RS facing, rejoin yarn to held sts and BO central 20 (20, 24, 24, 26, 26) sts, work in pattern to end. [55 (64, 68, 71, 70, 73) sts remain]

Work 1 WS row.

BO 5 sts at the beg of next 2 (3, 3, 4, 3, 4) RS rows. [45 (49, 53, 51, 55, 53) sts remain]

Sizes - (34.5, 40.75, 45.5, 50.25, 55.25)" only:

BO 4 sts at the beg of next - (3, 3, 4, 5, 4) RS rows. [- (37, 41, 35, 35, 37) sts remain]

All Sizes:

BO 3 sts at the beg of next 5 (4, 4, 2, 2, 2) RS rows, then
BO 2 sts at the beg of next 5 (1, 2, 2, 2, 2) RS rows. [20 (23, 25, 25, 25, 27) sts remain]

Work even in pattern until armholes measure 6.75 (7.75, 8.25, 9, 9.75, 11)", ending after a RS row.

Shape Right Front Shoulder

Next Row (WS): BO 10 (11, 12, 12, 12, 14) sts, work to end.
[10 (12, 13, 13, 13, 13) sts remain]

Work 1 RS row. BO remaining sts.

SLEEVES

With smallest circular ndl, use the Tubular method to CO 82 (94, 108, 122, 136, 158) sts. Do not join; work back and forth in rows.

Work in 1x1 Rib until piece measures 2" from beg, ending after a WS row.

Change to mid-size circular ndl.

Establish Pattern

Next Row (RS): Work 9 (15, 6, 13, 4, 15) sts in St st, pm, work 64 (64, 96, 96, 128, 128) sts in Cable Pattern, pm, work 9 (15, 6, 13, 4, 15) sts in St st.

Work 1 WS row even as established.

Shape Sleeve

Inc Row (RS): k1, m1, work in pattern to last st, m1, k1. [2 sts increased]

Work 7 (7, 7, 3, 3, 3) rows even as established.

Repeat the last 8 (8, 8, 4, 4, 4) rows 4 (3, 4, 8, 8, 8) more times. [92 (102, 118, 140, 154, 176) sts]

Continue working even in pattern until piece meas 8.5 (8.5, 9, 9, 9.5, 9.5)" from beg, ending after a WS row.

Shape Cap

(Note: During and after cap shaping, always keep a minimum of 2 sts in St st at the edges to aid when seaming sleeves.)

BO 3 (4, 3, 5, 6, 8) sts at the beg of next 8 (2, 12, 2, 4, 2) rows. [68 (94, 82, 130, 130, 160) sts remain]

Sizes - (34.5, -, 45.5, 50.25, 55.25)" only:

BO - (3, -, 4, 5, 7) sts at the beg of next - (6, -, 10, 10, 12) rows. [- (76, -, 90, 80, 76) sts rem]

All Sizes:

Dec Row (RS): K2, ssk, work in pattern to last 4 sts, k2tog, k2. [2 sts decreased]

Work 1 (1, 3, 3, 3, 5) rows even.

Repeat the last 2 (2, 4, 4, 4, 6) rows 17 (19, 1, 2, 10, 6) more times. [32 (36, 78, 84, 58, 62) sts remain]

Sizes - (-, 40.75, 45.5, 50.25, 55.25)" only:

[Repeat dec row, then work - (-, 1, 1, 1, 3) rows even] - (-, 19, 17, 5, 4) times. [- (-, 40, 50, 48, 54) sts remain]

All Sizes:

BO 5 sts at the beg of next 2 rows. [22 (26, 30, 40, 38, 44) sts remain]

BO remaining sts.

Make a second sleeve the same as the first.

FINISHING

Block all pieces to measurements. Seam shoulders. Seam body sides and sleeve sides. Set sleeve caps into armholes, easing in fullness evenly.

Collar

Using smallest circular ndl, with RS facing, beg at center of back neck, evenly pick up and knit 170 (192, 204, 210, 210, 214) sts around the neckline. (Note: The exact figure is not crucial, pick up evenly as required, ensuring there are no gaps or puckering, and that the final number is a multiple of 2.)

Pm for beg of rnd. Join to work in the rnd and work in 1x1 Rib until collar measures 1.5" from pick up round.

BO using the Tubular Bind-Off method.

Block again if desired.

