

Calbuco

by Cassandra Milani



MANOS DEL URUGUAY

SIZES

Circumference: 20"

Length: 8" excluding earflaps

MATERIALS

Manos del Uruguay MAXIMA (100% superfine merino wool; approx. 100g/219 yds), 2 sk with pom-pom (1 sk without pom-pom)

Shown in M2110 Zinnia

US 6/4mm ndls, double-pointed or 2 sizes smaller than size needed to obtain gauge

US 8/5mm double pointed needles or size needed to obtain gauge.

stitch marker

cable needle

stitch holder or waste yarn

tapestry needle

GAUGE

29 st repeat = 5" and 29 rnds = 4" in Hat Chart with larger ndls.

ABBREVIATIONS

BO: bind off

BOR: beginning of round

C4F: slip 2 sts to cn and hold in front, k2, k2 from cn

cn: cable needle

CO: cast on

dpn(s): double-pointed needle(s)

k: knit

k2tog: knit 2 stitches together

k3tog: knit 3 stitches together

m1L: insert left ndl under horizontal strand between st just worked and next st from the front to the back, knit through the back loop

m1R: insert left needle under horizontal strand between st just worked and next st from the back to the front, knit through the front loop

ndl(s): needle(s)

p: purl

p2tog: purl 2 stitches together

p3tog: purl 3 stitches together

pm: place marker

rnd(s): round(s)

RS: right side

st(s): stitch(es)

T2B: slip 1 st to cn and hold in back, k1, p1 from cn

T2F: slip 1 st to cn and hold in front, p1, k1 from cn

T3B: slip 1 st to cn and hold in back, k2, p1 from cn

T3F: slip 2 sts to cn and hold in front, p1, k2 from cn

WS: wrong side

STITCH GUIDE

I-Cord: Using 2 dpns, *knit 1 row; without turning the work, slide the sts to right-hand end of ndl, pull yarn tightly from the end of the row, (behind the sts); repeat from * until cord measures desired length.

Cable Cast-on Method: Turn so yarn is attached to sts on left needle, k1, slip new st onto left needle; *insert right needle between first 2 sts on left needle, k1 from this position, leave the first st on left needle and slip new st onto left needle; repeat from * for desired number of sts.

Garner Stitch (over any number of sts)

Rnd 1: Knit.

Rnd 2: Purl.

Repeat Rnds 1 and 2 for pattern.

Pom-pom: Cut a piece of yarn about 10" long and set aside. Wrap yarn from remaining skein around your fingers. It takes a lot of yarn to achieve fullness (the sample uses approx. 1/3–1/2 of a skein of yarn), so don't be shy in how much you use or you'll have a wimpy pom-pom! Once you have wrapped to your desired size, cut the yarn and tuck the end in to what you've wrapped. Take the wrapped yarn off of your hand carefully, keeping the loop intact. Lay the pre-cut 10" piece of yarn straight on a table. Place the wrapped yarn bundle on top of the piece of yarn so that the strand on the table is perpendicular to the direction of the wrapped yarn. Bring the cut piece of yarn around the wrapped yarn bundle and tie as tightly as you can. If this is too loose, your pom-pom could fall apart when you fluff it out. Your bundle should look vaguely like a figure-8 shape, with a set of loops on top and bottom of the tie. Cut through each section of loops, leaving the ends of the 10" piece of yarn long. Move the cut loop ends around to fill out into a ball shape. Trim the loop ends so they are even, and trim to the desired size. Take the long ends of the 10" piece of yarn, and pull through the top of the hat with a tapestry needle. Secure to the hat by weaving the ends through the center sts and knotting.

INSTRUCTIONS

LEFT EARFLAP

With smaller dpn, CO 4 sts

Work I-cord until piece measures 10" from cast-on.

Change to larger dpn,

Work Rows 1–36 of Earflap Chart. [36 sts]

Break yarn and slip all sts onto st holder or waste yarn.

RIGHT EARFLAP

Work same as for left earflap, keeping sts on dpn and yarn attached.

HAT

Set-up Rnd: Work across right earflap sts as follows: *[k2, p3] 2 times, k2, p2, k2, p4, k2, p2, k2, [p3, k2] 2 times, turn work so WS is facing and use the Cable Method to CO 22 sts; turn work so RS is facing; return 36 left earflap sts

to dpn and repeat from * once over left earflap. Pm for BOR. Join to work in the rnd, being careful not to twist cast-on sts. [116 sts]

Establish Ribbing: *[K2, p3] 2 times, k2, p2, k2, p4, k2, p2, k2, [p3, k2] 2 times, [k1, p1] 11 times; repeat from * once more.

Repeat the last rnd 4 times.

Remove BOR marker, k2, replace BOR marker.

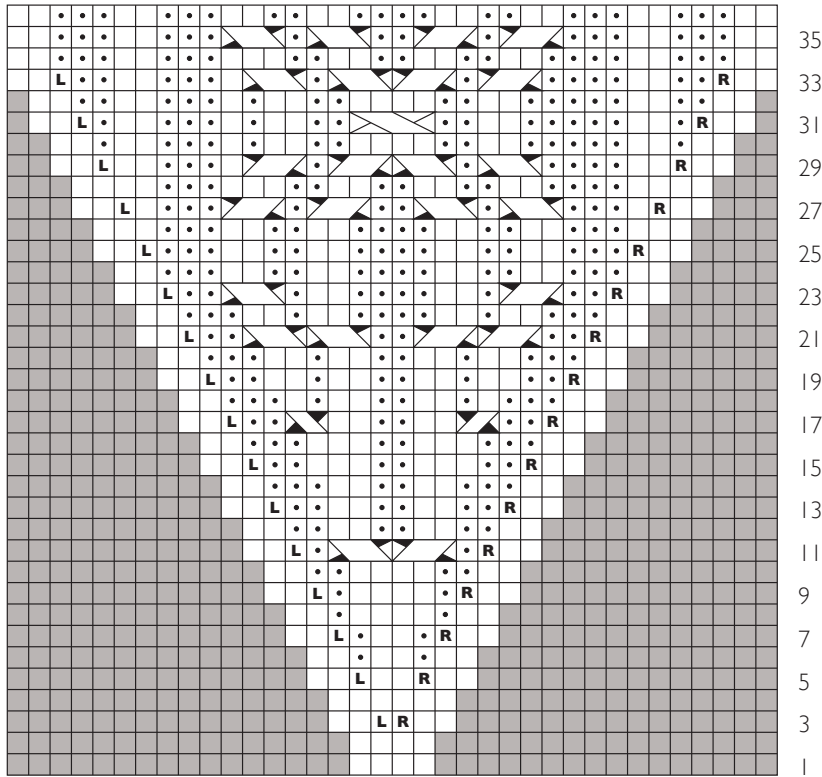
Establish Hat Chart and Garter Stitch: Work Hat Chart repeating the red-boxed sts 3 times, p3, k26.

Next Rnd: Work Hat Chart repeating the red boxed sts 3 times, p3, k2, p22, k2.

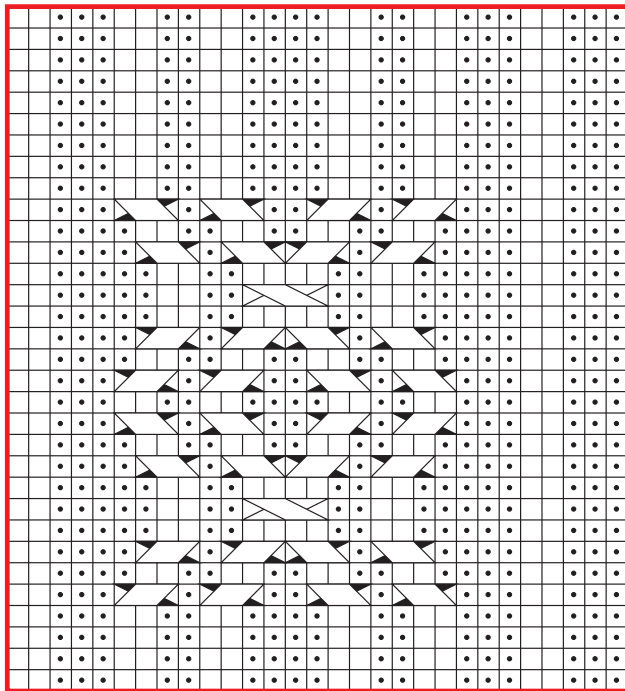
Continue working as established until Rnds 1–24 of Hat Chart have been completed.



EARFLAP CHART

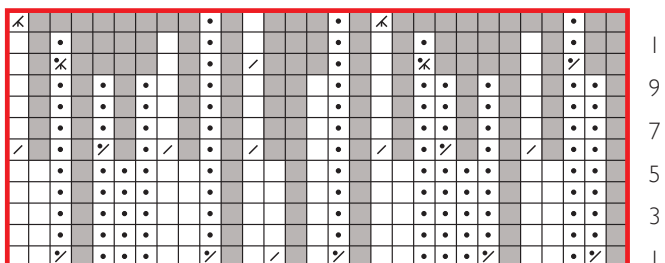


HAT CHART



- knit on RS, purl on WS
- purl on RS, knit on WS
- R** m1R
- L** m1L
- T3B
- T3F
- T2B
- T2F
- C4F
- p2tog
- k2tog
- p3tog
- k3tog
- no stitch
- pattern repeat

CROWN SHAPING CHART



All efforts were made to make this pattern error-free. For questions or support, please email info@fairmountfibers.com

Establish Hat Chart: Beginning with Rnd 25 of Hat Chart, work the red boxed sts 4 times around.

Continue working as established until Rnd 32 is completed, then work Rnds 1–10 once more ends, ending after Rnd 10 of Hat Chart.

Shape Crown

(also, see chart)

Rnd 1: *P2tog, p1, k2, p2tog, p3, k2, p2tog, k1, k2tog, k1, p2tog, k2, p3, p2tog, k2; repeat from * to end. [92 sts remain]

Rnds 2–5: *P2, k2, p4, k2, p1, k3, p1, k2, p4, k2; repeat from * to end.

Rnd 6: *P2, k2tog, p1, p2tog, p1, k2tog, p1, k1, k2tog, p1, k2tog, p1, p2tog, p1, k2tog; repeat from * to end. [64 sts remain]

Rnds 7–9: *P2, k1, p3, k1, p1, k2, p1, k1, p3, k1; repeat from * to end.

Rnd 10: *P2tog, k1, p3tog, k1, p1, k2tog, p1, k1, p3tog, k1; repeat from * to end. [40 sts remain]

Rnd 11: *P1, k1; repeat from * to end.

Rnd 12: *P1, k3tog, p1, k1, p1, k3tog; repeat from * to end. [24 sts remain]

Cut yarn leaving a 6-8" tail. Thread through remaining sts and fasten off.

FINISHING

Make Pom-Pom and secure it to top of hat.

Block to measurements. Weave in ends.

