

# Pastelitos

by Christine Marie Chen



MANOS DEL URUGUAY

## SIZES

Circumference: 17½" relaxed after blocking, stretches to fit up to 23" head circumference

Height: 8½"

## MATERIALS

Manos del Uruguay FINO (70% superfine merino wool, 30% silk; approx 100 g/490 yds), 1 sk.

Shown in #414 Ivory Letter-opener

US 5/3.75mm ndls, 16" circular and double-pointed, or size needed to obtain gauge

Stitch marker

Cable needle

Yarn needle

## GAUGE

31 sts and 40 rnds = 4" Cable Pattern.

## ABBREVIATIONS

BOR: beginning of round

CO: cast on

k: knit

k2tog: knit 2 stitches together

ndl(s): needle(s)

p: purl

p2tog: purl 2 stitches together

pm: place marker

rnd(s): round(s)

ssk: slip 2 sts, 1 at a time, knitwise to the right needle.

Return sts to the left needle in turned position then knit them together through the back loops

st(s): stitches

wyib: with yarn in back



## INSTRUCTIONS

### RIBBING

With circular ndl, CO 138 sts. Pm for BOR. Join to work in the rnd, being careful not to twist sts.

Establish Ribbing: \*K1, p1; repeat from \* around.  
Continue working ribbing as established until piece measures 1 1/2" from CO edge.

### BODY

Knit 1 rnd.

Work Rnds 1–24 of Cable Chart, then work Rnds 1–20 once more.

### Shape Crown

(Note: Change to double-pointed ndls when sts no longer fit comfortably on circular ndl.)

Work Rnds 1–25 of Crown Shaping Chart. [6 sts remain]

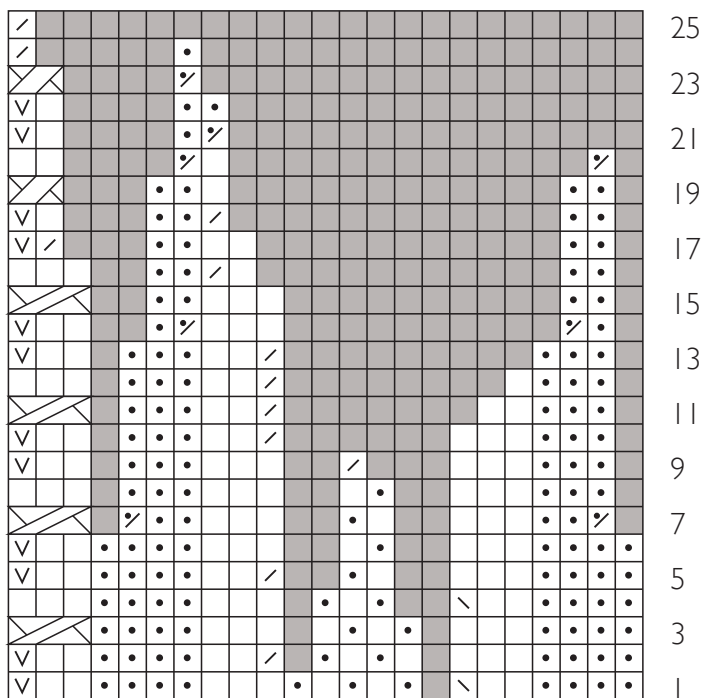
### FINISHING

Cut yarn and draw through remaining 6 sts, pulling tight, and secure. Weave in ends and block to measurements.



- knit
- purl
- slip 1 st purlwise wyib
- slip 2 sts to cable ndl and hold in back, k1; k2 from cable ndl
- slip 3 sts to cable ndl and hold in back, k1, p1, k1; k3 from cable ndl
- slip 3 sts to cable ndl and hold in front, k3; p1, k1, p1 from cable ndl
- slip 3 sts to cable ndl and hold in front, k3; k1, p1, k1 from cable ndl
- slip 3 sts to cable ndl and hold in back, p1, k1, p1; k3 from cable ndl
- ssk
- k2tog
- p2tog
- no stitch
- slip 1 st to cable ndl and hold in back, k1; k1 from cable ndl

### CROWN SHAPING CHART



### CABLE CHART

