

Azahar

by Ruth Garcia-Alcantud



MANOS DEL URUGUAY



rock + purl
www.rockandpurl.com

All efforts were made to make this pattern error-free. For questions or support, please email info@fairmountfibers.com

© Fairmount Fibers Ltd. 2015 Not to be reproduced or re-knit for profit

SIZES

Finished Bust Circumference 31.5 (34.75, 39.25, 43.5, 46.5, 48.75, 52.75)"

Length: 23 (23.5, 24.5, 25, 25.5, 26.5, 27)"

Sweater shown measures: 34.75"

To be worn with minimum 1" positive ease.

MATERIALS

Manos del Uruguay SERENA (60% baby alpaca, 40% pima cotton; approx 50g/170 yds/50g): 5 (5, 6, 6, 7, 8, 8) sk

Shown in: #S2246 Oyster

US 3 / 3.25mm 32" circular ndl, straight and set of 2 double pointed

stitch holders or waste yarn

stitch markers

removable stitch markers

US D-3/3.25mm crochet hook

5 hook and eye closures

tapestry needle

matching sewing thread and needle

GAUGE

28 sts and 36 rows = 4" in Stockinette stitch

32 rep sts and 32 rows = 4" in Lace Pattern

NOTES

Circular ndl is used to accommodate large number of sts. Do not join; work back and forth in rows.

STITCH GUIDE

Lace Pattern (multiple of 8 sts + 4)

(also, see chart)

Row 1 (RS): K2, *p1, k1, k2tog, [yo] twice, ssk, k1, p1; repeat from * to last 2 sts, k2.

Row 2 (WS): P2, *k1, p3, k1, p2, k1; repeat from * to last 2 sts, p2.

Row 3: K2, *p1, k2tog, yo, k2, yo, ssk, p1; repeat from * to last 2 sts, k2.

Row 4: P2, *k1, p6, k1; repeat from * to last 2 sts, p2.

Row 5: K2, *p1, k6, p1; repeat from * to last 2 sts, k2.

Row 6: Repeat Row 4.

Repeat Rows 1–6 for pattern.

Stockinette Stitch

Row 1 (RS): Knit.

Row 2 (WS): Purl.

Repeat Rows 1–2 for pattern.

Applied I-Cord

Using dpn, CO 2 sts, then pick up and knit 1 st along fabric edge. [3 sts]

*Without turning the work, slip all sts to the right-hand end of dpn. Pull yarn tightly from the end of the row, k1, k2tog-tbl. [2 sts remain] Pick up and knit 1 st along fabric edge. [3 sts]; repeat from * along edge, as indicated.

Crochet chain

Beg with a slip knot on crochet hook, *wrap yarn around crochet hook and draw it through the loop on the hook to form the first chain; repeat from * as many times as instructed. (The loop on the hook is never included when counting the number of chains)

ABBREVIATIONS

beg: begin(ning)

BO: bind off

CO: cast on

dec: dec

dpn(s): double pointed needle(s)

k: knit

k2tog: knit 2 stitches together

k3tog: knit 3 stitches together

ndl(s): needle(s)

p: purl

p2tog: purl 2 stitches together

RS: right side

ssk: slip 2 stitches, 1 at a time, knitwise to the right needle.

Return stitches to the left needle in turned position then knit them together through the back loops

ssp: slip 2 stitches, 1 at a time, knitwise to the right needle.

Return stitches to the left needle in turned position then purl them together through the back loops

sssk: slip 3 stitches, 1 at a time, knitwise to the right needle.

Return stitches to the left needle in turned position then knit them together through the back loops

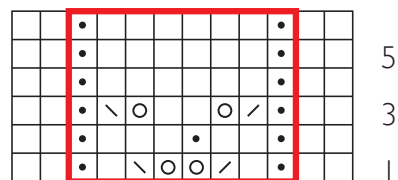
st(s): stitch(es)

tbl: through the back loop

WS: wrong side

yo: yarn over

LACE CHART



- knit on RS, purl on WS
- purl on RS, knit on WS
- yo
- k2tog
- ssk
- pattern repeat

INSTRUCTIONS

BODY

With circular ndl CO 292 (324, 364, 404, 436, 452, 492) sts. Do not join. Work back and forth in rows.

Knit 1 WS row.

Work in Lace Pattern until piece measures 8.5 (8.5, 8.5, 9, 9, 9)'' from beg, ending after a WS row.

Eyelet Dec Row (RS): K2, *sssk, k1, [yo] twice, k1, k3tog; repeat from * to last 2 sts, k2. [220 (244, 274, 304, 328, 340, 370) sts remain]

Next Row (WS): P2, *p3, k1, p2; repeat from * to last 2 sts, p2.

Cont working in St st until piece meas 16 (16, 16.5, 16.5, 16.5, 17, 17)'' from beg, ending after a WS row.

Next Row (RS): K55 (61, 68, 76, 82, 85, 93) for right front, place 110 (122, 138, 152, 164, 170, 184) sts onto st holder or waste yarn for back, then remaining 55 (61, 68, 76, 82, 85, 93) sts onto a separate st holder or waste yarn for left front. Continue working on right front sts only.

RIGHT FRONT

Shape Armhole

BO 2 (2, 3, 5, 6, 6, 8) sts at beg of next 1 (2, 3, 1, 1, 4, 3) WS rows. [53 (57, 59, 71, 76, 61, 69) sts remain]

Sizes 31.5 (34.75, 39.25, 43.5, 46.75, -, 52.75)'' only:

BO 1 (1, 2, 4, 5, -, 7) sts at the beg of next 3 (2, 1, 3, 3, -, 1) WS rows. [50 (55, 57, 59, 61, -, 62) sts remain]

All Sizes:

Work even until armhole measures 1'', ending after a WS row.

Shape Neck

BO 6 (6, 6, 6, 7, 7, 8) sts at the beg of next 3 (2, 2, 2, 3, 3, 3) RS rows, then 4 (5, 5, 5, 5, 5, 4) sts at the beg of next 2 (3, 3, 3, 2, 2, 2) RS rows. [24 (28, 30, 32, 30, 30, 30) sts remain]

Dec Row (WS): Purl to last 3 sts, ssp, p1. [1 st decreased]

Dec Row (RS): K1, ssk, knit to end. [1 st decreased]

Repeat the last 2 rows 1 (2, 3, 3, 2, 2, 2) more times. [20 (22, 22, 24, 24, 24, 24) sts remain]

Continue working even in St st until armhole measures 7 (7.5, 8, 8.5, 9, 9.5, 10)'' from beg, ending after a RS row.

Shape Shoulder

BO 10 (11, 11, 12, 12, 12, 12) sts at beg of next 2 WS rows.

BACK

Return 110 (122, 138, 152, 164, 170, 184) held back sts to ndl and join yarn preparing to work a RS row.

Shape Armholes

BO 2 (2, 3, 5, 6, 6, 8) sts at the beg of next 2 (4, 6, 2, 2, 8, 6) rows. [106 (114, 120, 142, 152, 122, 136) sts remain]

Sizes 31.5 (34.75, 39.25, 43.5, 46.75, -, 52.75)'' only:

BO 1 (1, 2, 4, 5, -, 7) at the beg of next 6 (4, 2, 6, 6, -, 2) rows. [100 (110, 116, 118, 122, 122, 122) sts remain]

All Sizes:

Work even until armholes measure 5 (5.5, 6, 6.5, 7, 7.5, 8)", ending after a WS row.

Next Row (RS): K35 (39, 40, 42, 43, 43, 43) sts and place them onto st holder or waste yarn for right back, BO next 30 (32, 36, 34, 36, 36, 36) sts, knit to end.

Shape Left Back Neck

Purl 1 WS row.

BO 3 sts at the beg of next 1 (3, 4, 4, 5, 5, 5) RS rows, then BO 2 sts at the beg of next 6 (4, 3, 3, 2, 2, 2) RS rows.

Work even until armhole meas 7 (7.5, 8, 8.5, 9, 9.5, 10)", ending after a RS row.

Shape Left Back Shoulder

BO 10 (11, 11, 12, 12, 12, 12) sts at the beg of next 2 WS rows.

Shape Right Back Neck

Return 35 (39, 40, 42, 43, 43, 43) held right back sts to ndl and join yarn preparing to work a WS row.

BO 3 sts at the beg of next 1 (3, 4, 4, 5, 5, 5) WS rows, then BO 2 sts at the beg of next 6 (4, 3, 3, 2, 2, 2) WS rows. [20 (22, 22, 24, 24, 24, 24) sts remain]

Work even until armholes measure 7 (7.5, 8, 8.5, 9, 9.5, 10)", ending after a WS row.

Shape Right Back Shoulder

BO 10 (11, 11, 12, 12, 12, 12) sts at the beg of next 2 RS rows.

LEFT FRONT

Return 55 (61, 68, 76, 82, 85, 93) held left front sts to ndl, and join yarn preparing to work a RS row.

Shape Armhole

BO 2 (2, 3, 5, 6, 6, 8) sts at beg of next 1 (2, 3, 1, 1, 4, 3) RS rows. [53 (57, 59, 71, 76, 61, 69) sts remain]

Sizes 31.5 (34.75, 39.25, 43.5, 46.75, -, 52.75)" only:

BO 1 (1, 2, 4, 5, -, 7) sts at the beg of next 3 (2, 1, 3, 3, -, 1) RS rows. [50 (55, 57, 59, 61, -, 62) sts remain]

All Sizes:

Work even until armhole measures 1", ending after a RS row.

Shape Neck

BO 6 (6, 6, 6, 7, 7, 8) sts at the beg of next 3 (2, 2, 2, 3, 3, 3) WS rows, then 4 (5, 5, 5, 5, 5, 4) sts at the beg of next 2 (3, 3, 3, 2, 2, 2) WS Rows. [24 (28, 30, 32, 30, 30, 30) sts remain]

Dec Row (RS): Knit to last 3 sts, k2tog, k1. [1 st decreased]

Dec Row (WS): P1, p2tog, purl to end. [1 st decreased]

Repeat the last 2 rows 1 (2, 3, 3, 2, 2, 2) more times. [20 (22, 22, 24, 24, 24, 24) sts remain]

Continue working even in St st until armhole measures 7 (7.5, 8, 8.5, 9, 9.5, 10)", ending after a WS row.

Shape Shoulder

BO 10 (11, 11, 12, 12, 12, 12) sts at beg of next 2 RS rows.

SLEEVES

CO 72 (74, 82, 92, 104, 114, 124) sts.

Knit 5 rows, ending after a RS row.

Work in St st until piece measures 7.5 (7.5, 8, 8, 8.5, 8.5, 8.5)" from beg, ending after a WS row.

Shape Cap

BO 2 (2, 3, 5, 6, 6, 8) sts at the beg of next 2 (4, 6, 2, 2, 8, 6) rows. [68 (66, 64, 82, 92, 66, 76) sts remain]

Sizes 31.5 (34.75, 39.25, 43.5, 46.75, -, 52.75)" only:

BO 1 (1, 2, 4, 5, -, 7) sts at the beg of next 6 (4, 2, 6, 6, -, 2) rows. [62 (62, 60, 58, 62, -, 62) sts remain]

All Sizes:

Dec Row (RS): K3, ssk, knit to last 5 sts, k2tog, k3. [2 sts decreased]

Work 3 (3, 3, 5, 3, 3, 5) rows even.

Repeat the last 4 (4, 4, 6, 4, 4, 6) rows 2 (4, 7, 0, 9, 10, 6) more times. [56 (52, 44, 56, 42, 44, 48) sts remain]



[Repeat dec row, then work 1 (1, 1, 3, 1, 1, 3) rows even]
13 (11, 6, 10, 2, 2, 2) times. [30 (30, 32, 36, 38, 40, 44) sts remain]

BO 3 sts at beg of next 4 rows [18 (18, 20, 24, 26, 28, 32) sts remain]

BO remaining sts.

FINISHING

Block pieces to measurements.

Sew shoulder seams.

I-Cord Edging

Beg just above the lace pattern on right front, work Applied I-cord up right front, around back neck and down left front to the top of the lace pattern on left front. BO all sts.

Tie

Make a crochet chain, a braid, or choose some contrast-colored ribbon to thread through the eyelets above the lace on the body.

Hook and Eye Closures

Place a removable marker on each front .5" below the neck shaping; place another 1" above the lace, then place 3 more evenly spaced between them to mark hook and eye placement. Sew hook and eye closures to WS where marked, .5" in from the edge.

Sew sleeve seams. Set sleeve caps into armholes, easing in any fullness towards the top.

Weave in ends.

