

Minas

by Angelia Robinson



MANOS DEL URUGUAY

SIZE

Finished circumference = 26¼".

Depth: 10½"

MATERIALS

Manos del Uruguay SILK BLEND (70% merino, 30% silk;

approx. 50g/150 yds) 2 sk MC, 1 sk CC

Shown in #3044 Braiar (MC) and #3079 Chartreuse (CC).

US H-8/5mm crochet hook or size to obtain gauge

Tapestry needle

GAUGE

18 stitches and 13 rows = 4" over Mosaic Block Pattern.

ABBREVIATIONS

ch: chain

CC: contrast color

dc: double crochet

hdc: half double crochet

MC: main color

mp: (make picot) work [sc, ch 3, sl st] in same st

RS: right side

rep: Repeat

sc: single crochet

sl st: slip stitch

st(s): stitch(es)

tch: turning chain

tr: treble crochet

WS: wrong side



STITCH GUIDE

Mosaic Block Pattern (multiple of 12 ch + 11)

Set-up Row 1 (RS): With CC, sc in second ch from hook and in each ch across, turn. [118 sc]

Row 1 (WS): With CC, ch 1 (does not count as a stitch), sc in first sc and in each sc across, turn.

Row 2: With MC, ch 3 (counts as dc), skip first sc, dc in second sc, hdc in next sc, sc in next sc, ch 2, skip next 2 sc, *sc in next sc, hdc in next sc, dc in next 2 sc, tr in next 2 sc, dc in next 2 dc, hdc in next sc, sc in next sc, ch2, skip next 2 sc; rep from * to last 4 sc, sc in next sc, hdc in next sc, dc in last 2 sc, turn.

Row 3: With MC, ch 3 (counts as dc), skip first dc, dc in second dc, hdc in next hdc, sc in next sc, *ch 2, skip ch-2 space, sc in next sc, hdc in next hdc, dc in next 2 dc, tr in next 2 tr; dc in next 2 dc, hdc in next hdc, sc in next sc; rep from * to last 6 sts, ch 2, skip ch-2 space, sc in next sc, hdc in next hdc, dc in next dc, dc in third ch of tch, turn.

Row 4: With CC, ch 1, sc in first 4 sts, skipping ch-2 spaces from previous 2 rows work 1 sc in next 2 sc of third row below, *sc in next 10 sts, sc in next 2 sc 3 rows below; rep from * to last 4 sts, sc in next 3 sts, sc in third

ch of t ch, turn.

Row 5: With CC, ch 1, sc in first sc and in each sc across, turn.

Row 6: With MC, ch 1, sc in first sc, hdc in next sc, dc in next 2 sc, tr in next 2 sc, *dc in next 2 sc, hdc in next sc, sc in next sc, ch 2, skip 2 sc, sc in next sc, hdc in next sc; rep from * to last 4 sts, dc in next 2 sc, hdc in next sc, sc in last sc, turn.

Row 7: With MC, ch 1, sc in first sc, hdc in next hdc, dc in next 2 dc, *tr in next 2 tr; dc in next 2 dc, hdc in next hdc, sc in next sc, ch 2, skip ch-2 space, sc in next sc, hdc in next hdc, dc in next 2 dc; rep from * to last 6 sts, tr in next 2 tr; dc in next 2 dc, hdc in next hdc, sc in last sc, turn.

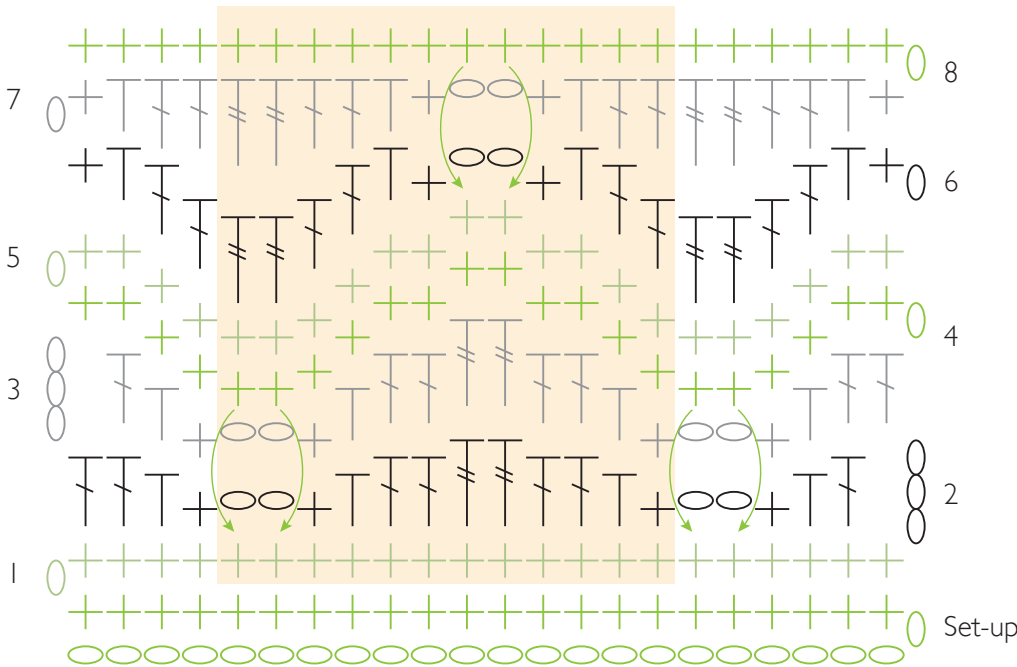
Row 8: With CC, ch 1, sc in next 10 sc, *skipping ch-2 spaces from previous rows work sc in next 2 sc of third row below, sc in next 10 sc; rep from * to end.

Rep Rows 1–8 for pattern.

NOTE

When changing colors, carry the yarn up on wrong side of work.

MOSAIC BLOCK CHART



- O chain
- + single crochet
- T half double crochet
- T double crochet
- T treble crochet
- pattern repeat

INSTRUCTIONS

COWL

With CC, ch 119.

Work Set-up Row of Mosaic Block Pattern.

Work Rows 1–8 of Mosaic Block Pattern 3 times, changing colors as indicated.

Work Rows 1–5 of Mosaic Block Pattern.

TRIM

Row 1 (RS): With MC, ch 1, sc in first sc and in each sc across, turn.

Row 2: Ch 1, mp first sc, sc in next 9 sc, mp in next 2 sc, *sc in next 10 sc, mp in next 2 sc; rep from * to last 10 sc, sc in next 9 sc, mp in last sc, fasten off.

Join yarn to opposite edge with RS facing, and rep trim rows 1 and 2.

FINISHING

Block to measurements.

Sew sides together to form circular piece taking care to match pattern rows. Weave in ends.

