

Swarthmore

by Elizabeth Nields



MANOS
DEL URUGUAY

SIZE

Finished bust circumference: 34 (37, 40, 43, 46, 49)"
Length: 24 ¼ (24 ¼, 30 ¼, 30 ¼, 32 ¼, 32 ¼)"
Sweater shown measures 34".

MATERIALS

Manos del Uruguay SERENA (60% baby alpaca, 40% pima cotton; approx. 50g, 170 yds) 5 (6, 6, 7, 7, 8) skeins. Shown in S2419 Thunder.

1 button

US 6/4mm needles, or size needed to obtain gauge
29" or longer circular needle size 3/3.25mm, length to hold large number of sts for border markers

GAUGE

22 sts and 34 rows = 4"/10cm over Diamond Lace Pattern using larger needles

Rev St St (any number of sts):

All odd-numbered rows (RS): P.

All even-numbered rows: K.

NOTE

Garment is worked from outer edge to center, beginning with sleeve.

RIGHT SIDE

Sleeve: Using larger ndl, CO 91 (91, 113, 113, 135, 135) sts. Work 5 rows Rev St st. Next row (RS): Begin Diamond Lace Chart Row 1, working 4 (4, 5, 5, 6, 6) repeats of Diamond Lace and edge sts as shown. Work even until sleeve measures 12", ending with a RS row. Make a note of last chart row completed, in order to match 2 sides exactly. Do not turn. With an extra length of yarn, approx 2 yds, use long-tail CO to add 88 (88, 110, 110, 110, 110) sts to end of RS row. Turn, work WS row. Do not turn. Use a second length of yarn to CO 88 (88, 110, 110, 110, 110) sts onto end of WS row; 267 (267, 333, 333, 355, 355) sts. Turn and work Diamond Lace Chart to end. (Number of sts added allow for full repeats of chart, plus edge sts as shown.) Work even until piece measures 4¾ (5½, 5¾, 6¼,

7, 7³/₄)" from beg of Body CO, ending with a WS row.
Divide Front and Back: Work in pattern over 134 (134, 167, 167, 178, 178) sts, place rem 133 (133, 166, 166, 177, 177) sts on holder or spare needle for Back.

FRONT

WS: BO 18 (18, 20, 20, 20, 20) sts, p to end. Next row, Keeping pattern correct, work until 3 sts remain, k2tog, k1.
WS: Purl. Repeat decrease every RS row 12 (12, 15, 15, 15, 15) times more, then every 4th row 2 (2, 3, 3, 3, 3) times; 101 (101, 128, 128, 139, 139) sts. Work even until piece measures 8¹/₂ (9¹/₄, 10, 10³/₄, 11¹/₂, 12¹/₄)" from Body CO. Place all sts onto holder.

RIGHT BACK

Rejoin yarn to sts held for back. RS: K1, ssk, work in pattern to end. Repeat this dec every RS row 4 times more; 128 (128, 161, 161, 172, 172) sts. Work even until same length as Right Front, ending with a RS row. Place all sts onto holder.

LEFT SIDE

Work same as Right Side until piece measures same as Right Side for Front/Back division, ending with a WS row. Divide front and back. RS: Work in pattern over 133 (133, 166, 166, 177, 177) sts, place these sts just worked onto holder or spare needle for Back.

LEFT FRONT

BO 18 (18, 20, 20, 20, 20) sts, work in pattern to end. Work WS row. Next row: K1, ssk, work in pattern to end. Repeat this dec every RS row 12 (12, 15, 15, 15, 15) times more, then every 4th row 2 (2, 3, 3, 3, 3) times; 101 (101, 128, 128, 139, 139) sts. Work even until same length as Right Front. Place all sts onto holder or spare needle.

LEFT BACK

Rejoin yarn to sts held for Back, work WS row. Next row, RS: Work in pattern until 3 sts remain, k2tog, k1. Repeat this dec every RS row 4 times more; 128 (128, 161, 161, 172, 172) sts. Work even until same length as Right Back, ending with a RS row. Place all sts onto holder.



FINISHING

Sew side seams. Graft or use 3 needle bind-off to join center back.

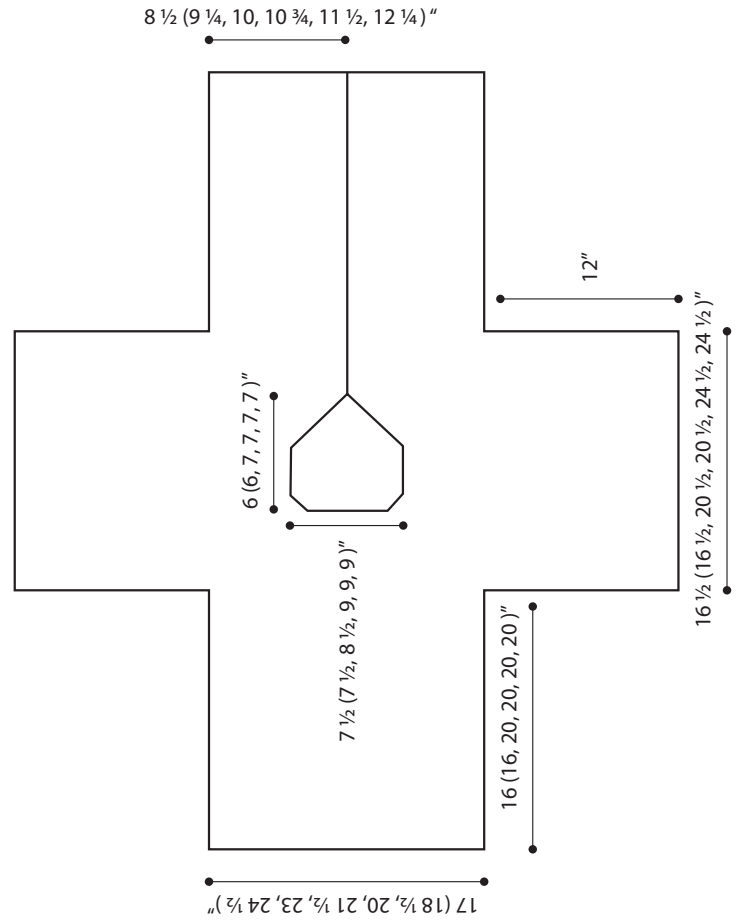
With smaller needle, RS facing, beginning at right side seam, pick up along lower Right Front edge 58 (65, 71, 75, 81, 86) sts, pm, k1 from front holder, pm, k across held sts until 1 st remains, pm, k1, pm, pick up 23 (26, 26, 29, 29, 29) sts along front neck, pick up 18 (18, 20, 20, 20, 20) along front neck bind-off, pick up 46 (52, 52, 58, 58, 58) sts along Back neck, pick up 18 (18, 20, 20, 20, 20) sts along neck bind-off, pick up 23 (26, 26, 29, 29, 29) sts along Left Front neck, pm, k1 from holder, pm, k Left Front held sts until 1 st remains, pm, k1, pm, pick up 58 (65, 71, 75, 81, 86) sts along bottom of Left Front, pick up 116 (130, 142, 150, 162, 172) sts along bottom of Back. 562 (602, 684, 712, 758, 778) sts. Place different color marker to show beginning of round.

Rounds 1 & 3: *Purl to m, yo, slm, k1, slm, yo, rep from * to end of round.

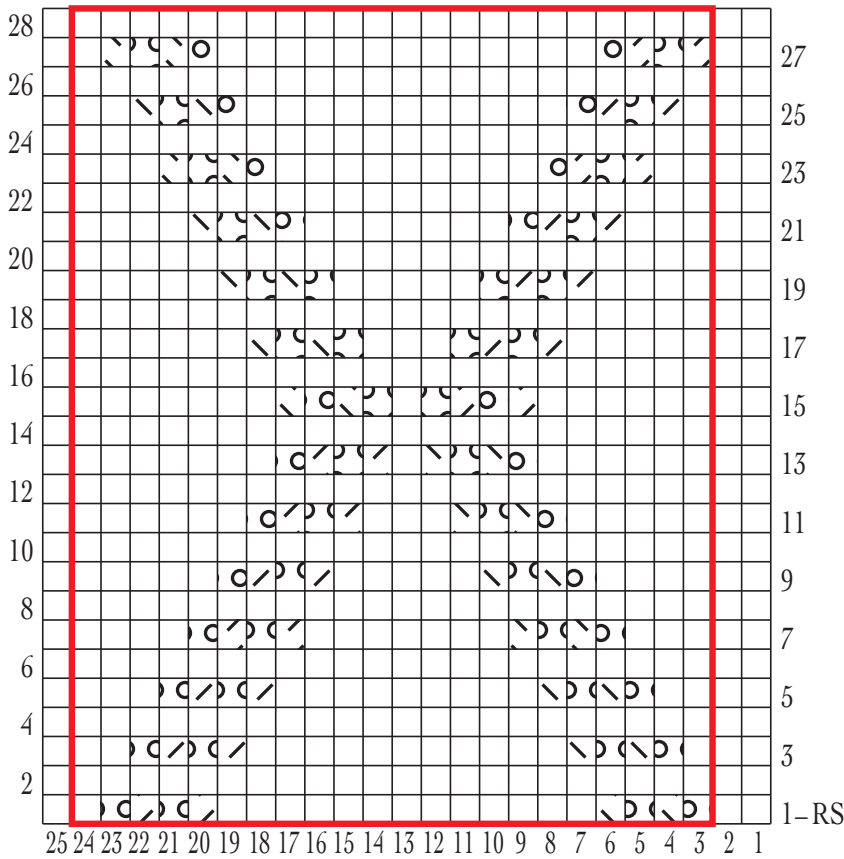
Round 2: P.

Round 4: Bind off all sts purlwise.

Sew sleeve seams. Weave in ends. Block to measurements. Sew on button.



DIAMOND LACE CHART



- k on RS, p on WS
- k2tog
- ssk
- yo