

# OWNER'S GUIDE

---

BT 460



 **PHIATON**



## WIRELESS HEADPHONES

Thank you for purchasing PHIATON BT 460.

Please follow the directions, and read the guidelines carefully before use.  
Please keep the owner's guide for future reference.

- Some functions of the BT 460 may not be available when it is paired with certain devices.
- The specifications are subject to change without prior notice for quality improvement.

## CONTENTS

1. SAFETY AND GENERAL INFORMATION
2. COMPONENTS & FEATURES
3. CHARGING
4. POWER ON/OFF AND HEADPHONE CONNECTION WAITING MODE
5. PAIRING WITH A 'BLUETOOTH DEVICE'
6. MULTIPOINT CONNECTION
7. LISTENING TO MUSIC (PLAY & CONTROL)
8. ACCEPTING / MAKING A CALL WHILE PLAYING MUSIC
9. USING THE CALL FUNCTION
10. ShareMe™ FEATURE
11. MISCELLANEOUS FEATURES
12. CONNECTING AND USING THE MICROPHONE CABLE
13. SPECIFICATIONS
14. PRODUCT SYMPTOMS AND TROUBLESHOOTING
15. FCC COMPLIANCE INFORMATION
16. CE COMPLIANCE INFORMATION

English

한국어

Deutsch

Français

Español

русский

中國語

## 1. SAFETY AND GENERAL INFORMATION

- 1) Use a standard USB charging cable (included), with or without a charging adapter.  
(5V, over 500mA) \* Adapter Not Included
- 2) Lower the volume prior to listening to audio to prevent potential damage to eardrums caused by sudden loud sound.
- 3) Listening to loud music for extended periods of time may cause hearing damage.
- 4) Do not store the device in places with a temperature higher than 113 °F/ 45 °C.
- 5) Keep the device dry. If the device becomes wet, turn the power off, dry the device with a dry towel and contact Phiaton Customer Service for an inspection.  
(For more information, refer to the contact us page within our website – [phiaton.com](http://phiaton.com))
- 6) Do not attempt to disassemble, modify or repair the device.
- 7) Do not cause shock to the device.
- 8) Keep out of the reach of children and pets.
- 9) Do not tug on cords or touch power plugs with wet hands.
- 10) Do not use the device nearby microwave ovens or wireless LAN adapters.
- 11) When the product is not being used, set the device power switch to 'OFF'.
- 12) When storing the device, place the device within the provided carrying case.
- 13) When cleaning the device, use a clean dry cloth to wipe the device clean.  
(Do not use solvents)
- 14) When storing the headphones, the ear pads may become damaged due to sweat, moisture and make up on the ear pads. Use a slightly wet towel or tissue and wipe the device before storing.
- 15) Replacement ear pads can be purchased from Phiaton Customer Service.
- 16) Use while driving or walking will prevent outside noise, such as signals or alarms, from being heard and may be dangerous to yourself and others. Heed caution during use.
- 17) The radio waves of this device may affect electronic medical devices. If you use an electronic medical device, consult your doctor or medical device company before you use this device.

※ Use the BT 460 only for its intended purposes.

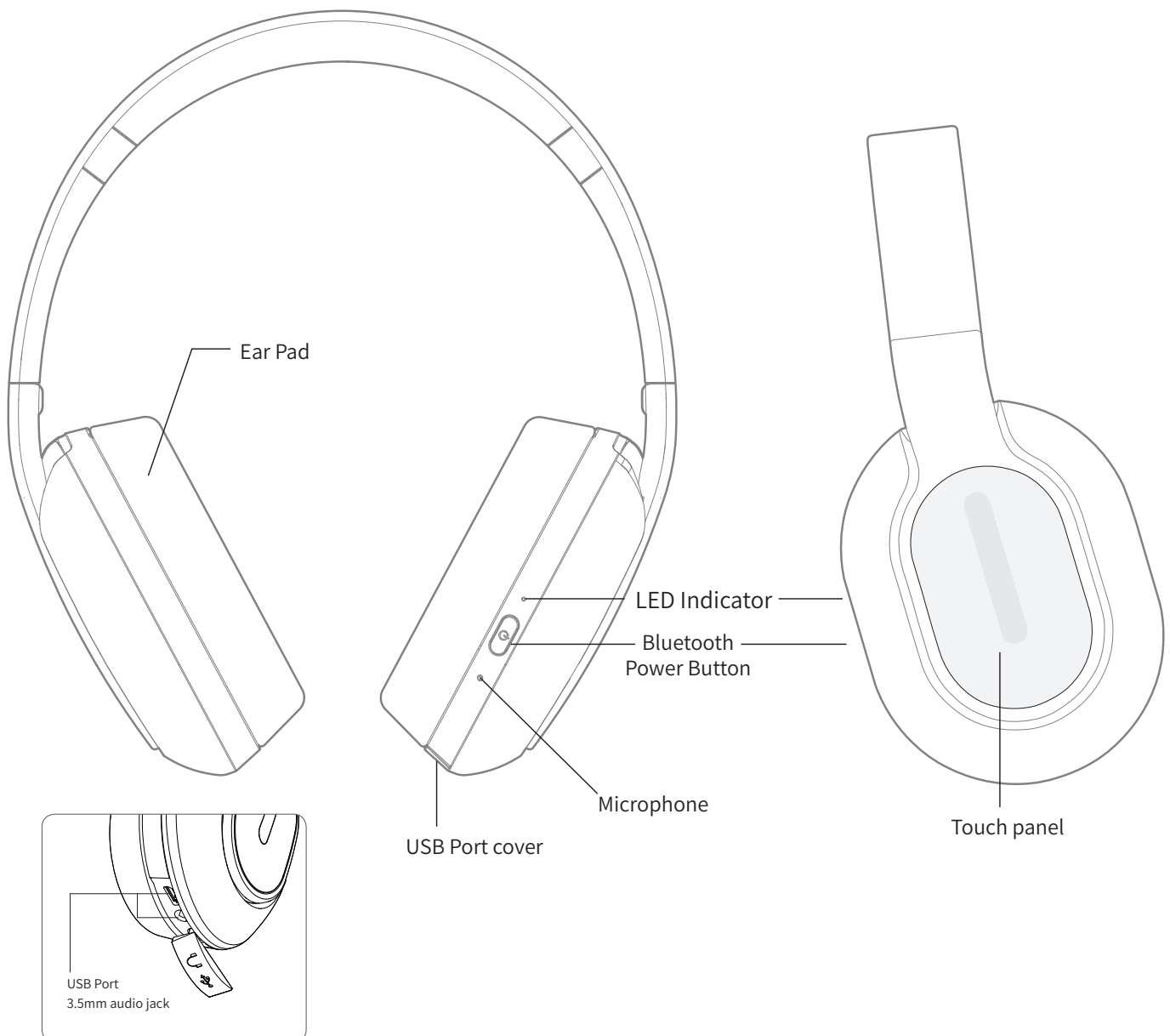
※ This device cannot be used for purposes related to human safety as it may cause radio interference during operation.

## 2. COMPONENTS & FEATURES

### 1) COMPONENTS

- BT 460
- USB Charging Cable
- Microphone Cable (1.0 m, 3.5mm to 3.5 mm Plug)
- Carrying Case
- Quick Guide
- Warranty Card

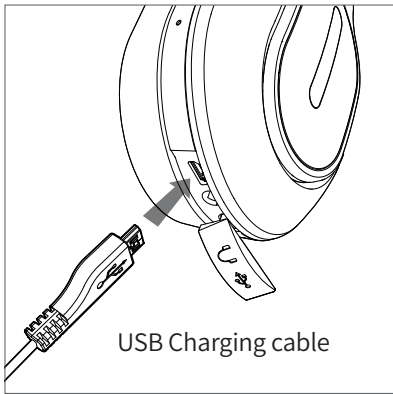
### 2) FEATURES



### 3. CHARGING

The device may not be charged upon purchase and must first be charged before use.

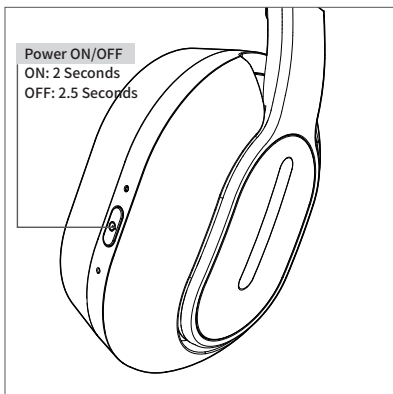
- 1) Connect the provided USB charging cable (micro USB 5pin connector) to BT 460.
- 2) Connect the provided USB charging cable with a computer (laptop) or you may also use a separately purchased USB adaptor (rating: 5V/over 500mA) to begin charging.



Operation	LED indicator
Charging	Red Light
Charging complete	Blue Light

- This device has a built-in battery, so it will begin charging automatically when you connect the charging cable.

### 4. POWER ON/OFF AND EARPHONE CONNECTION WAITING MODE



#### 1) Power ON/OFF

- Press and hold the 'Power' Button for 2 seconds to turn the power on.
- When turning the power off, press and hold the POWER Button for 2.5 seconds to turn off.

Status	Operation	LED Indicator	Notice
ON	Press and hold the POWER Button for 2 seconds	After Purple light, Blue light blinks 2 times	Vibrate 1 time with sound effect
OFF	Press and hold the POWER Button for 2.5 seconds	Red light blinks 5 times	Vibrate 2 times with sound effect

※ Pairing mode will start once the power is turned on for the first time after purchase.

#### 2) Connection Waiting Mode

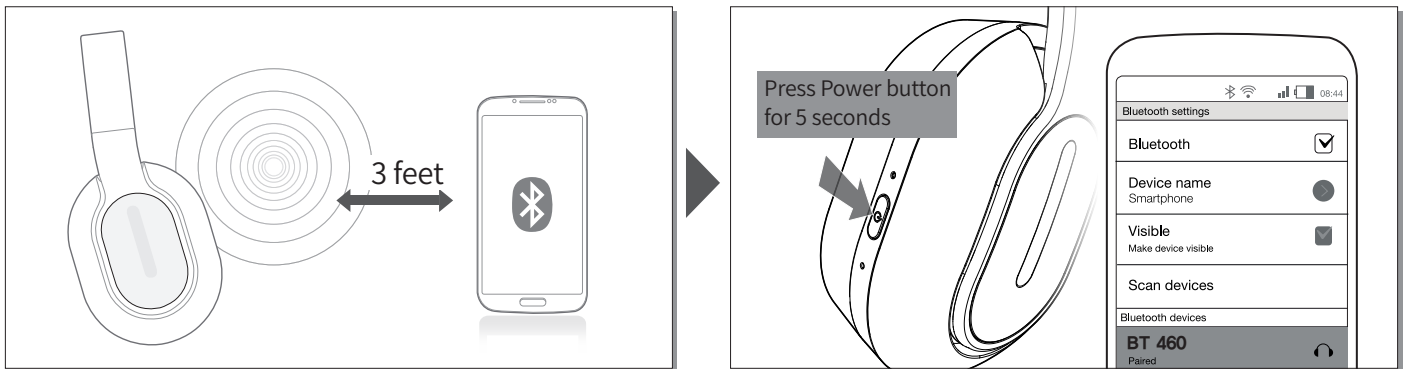
- When power is turned on, 'Connection Waiting Mode' will start if 'Pairing Mode' cannot be entered or the headphones cannot connect with 'Bluetooth Device'.
- If the 'Bluetooth Device' is not connected within 5 minutes in 'Connection Waiting Mode', the headphones will automatically turn off.

\* At Connection Waiting Mode, the headphone should be entered to 'Pairing Mode' for connection to 'Bluetooth device' again after power off.

If not, BT 460 will turn off within 5 minutes after starting 'Connection Waiting Mode'

Status	LED Indicator
Connection Waiting Mode	Blue light blinks twice in 6 second intervals

## 5. PAIRING WITH A 'BLUETOOTH DEVICE'



### 1) Pairing

- Turn on the Bluetooth feature with the 'Bluetooth Device' you want to connect with the BT 460.
- Place the BT 460 within 3 feet of the 'Bluetooth Device' you want to connect.
- Press and hold the POWER Button for over 5 seconds with the BT 460 power on to enter Pairing Mode. Pairing mode will start once the power is turned on for the first time after purchase.

Status	LED Indicator	Voice Guidance
Pairing Mode	Blue and Red light alternately blinks	Sound effect with vibration 1 time and then 'Pairing Mode activated'

- Within the 'Bluetooth Device' you want to connect, search/select 'BT 460'.
  - ※ If the 'Bluetooth Device' requires a PIN CODE or password, enter '0000'.
- Use the headphones to play music or connect a call.

Operation	LED Indicator	Voice Guidance
Connection success	After Purple light blinks twice, Blue light blinks once in 6 second intervals	Device connected

### 2) Re-connecting a Disconnected Device

#### ① Auto Connection

- Once the device has been paired with a 'Bluetooth Device' it will automatically be connected to a previously connected device once the BT 460 power is turned on.
- If Bluetooth becomes disconnected as the discover range between the 'Bluetooth Device' and the BT 460 is exceeded, then Bluetooth will not be automatically re-connected. When you are back within the discover range (33 feet), you must then connect manually.

#### ② Manual Connection

- When having entered 'Connection Waiting Mode' during connection.
- Press the CALL Button or the PLAY Button on the headphone to connect.
- The BT 460 will also be connected if you select 'BT 460' from the device search list within your 'Bluetooth Device'.

### 3) Checkpoints Upon Pairing

- Check to see whether the Bluetooth feature is activated within the 'Bluetooth Device' you want to connect.

- When selecting the connection device, connect by selecting stereo headset device.  
Music cannot be played when connected through mono headset.

※ In order to properly use the Bluetooth feature of this device, the profile (A2DP, HSP, HFP and AVRCP) of the 'Bluetooth Device' you are trying to connect must support the profile of this device.

\* A2DP-“Advanced Audio Distribution Profile”, HSP-“Headset Profile”, HFP-“Hands Free Profile”.  
AVRCP-“Audio/Video Remote Control Profile”

※ The device will not operate properly if the profiles are not supported equally. Even when the profiles are supported equally, some features may not properly operate depending on the 'Bluetooth Device' specifications. To check the detail specifications of this headphone's profile, refer to '**13. SPECIFICATIONS**'. For more information, please visit [phiaton.com](http://phiaton.com) or contact Phiaton customer service.

## 6. MULTIPOINT CONNECTION

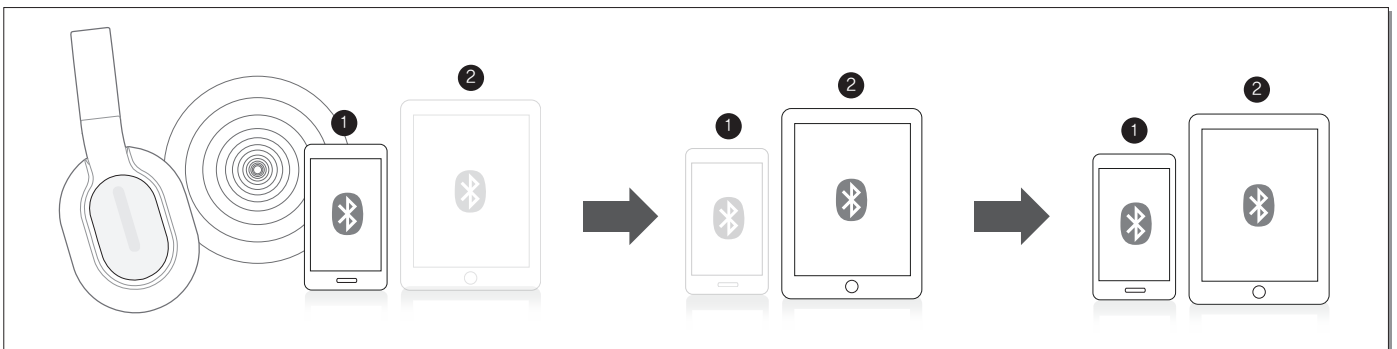
### 1) What is 'Multipoint Connection'?

- This is a feature where BT 460's user can simultaneously connect two Bluetooth devices.

### 2) Multipoint Connecting

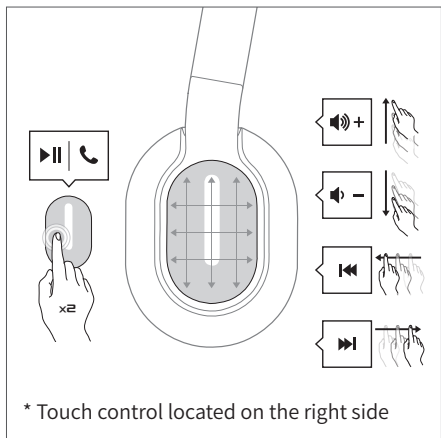
- Turn on the Bluetooth feature within the two 'Bluetooth Devices' you want to connect with BT 460.
- Refer to **5. PAIRING WITH A 'BLUETOOTH DEVICE'** to pair the first device with the BT 460.
- Press and hold the POWER Button again for 5 seconds to enter 'Pairing Mode'.  
(Here, the first device becomes disconnected.)
- Once 'Pairing Mode' has been entered, pair the second device.
- Within the first 'Bluetooth Device' you want to connect, select 'BT 460' again.
- Now, both of the 'Bluetooth Devices' will be connected simultaneously, and now the 'BT 460' will control the secondly paired device.

- ※ Sleep Mode will be entered when devices are not connected within two minutes. When trying to connect a device while in Sleep Mode, pressing any button will re-enter 'Connection Waiting Mode' where connection is possible.
- ※ When the BT 460 power is turned off and back on, only the second paired device will automatically be connected. When the first paired device is reconnected, then both of the devices will remain connected.



- ※ Upon Multipoint Connection, the features operated within BT 460 usually operate within the second paired device.  
(When using the first paired device, it is possible to operate the device from BT 460.)
- ※ When using Multipoint Connection, the order of the paired devices may change. To change the order, re-connect the device you usually use.

## 7. LISTENING TO MUSIC (PLAY & CONTROL)



### 1) Playing Music

- Double tap touch panel or Press the POWER button for about 1 second to play music from the 'Bluetooth Device'
- While music is playing, double tap touch panel or Press the Power button for about 1 second to pause the playing music. The music will be played from the paused point when playing music again.

Status	LED Indicator
While music is playing (Connection with aptX or AAC)	Purple Light slowly blinks every 6 seconds
While music is playing (Connection with SBC)	Blue Light slowly blinks every 6 seconds

\* SBC(Sub Band Codec) is default audio codec installed for any 'Bluetooth Device'.

\* aptX and AAC are high quality audio codec.

### 2) Controlling Volume and Using Seek

- Sweep the touch panel to top (Vol +) / bottom (Vol-) to control the volume.
- Sweep the touch panel to forward (FF) / backward (REW) to go to the next / previous song.

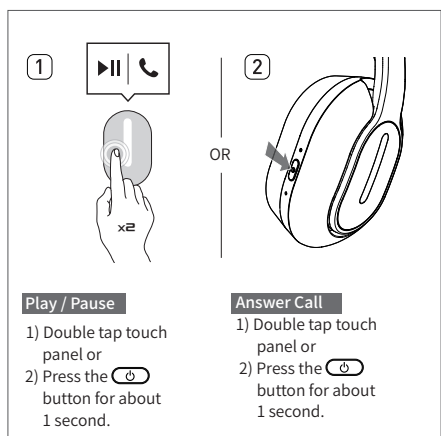
\* Music can be listened to through BT 460 by directly operating your 'Bluetooth Device'.

\* When the battery is completely drained, you can connect the provided microphone cable to continue listening.

### 3) Smart Play / Pause

- BT 460 has Smart Play / Pause function which can detect whether the headphone is being worn or not.
- The function can play or pause music automatically.  
(Play when headphones are worn on the ears/Pause when the headphones are removed from the ears).
- To continue playing music when the headphones are not worn on the ears, double tap the touch panel or press the Power button.

## 8. ACCEPTING / MAKING A CALL WHILE PLAYING MUSIC



### 1) Accepting a Call while Playing Music

- When the incoming call tone is heard through the headphone, tap touch panel twice quickly or press the POWER button. The music will be paused and the call is connected.
- Once the call has ended,, tap touch panel twice quickly or press the POWER button to terminate the call. Once the call is terminated, the paused music will play again.

### 2) Making a Call while Playing Music.

- While playing music, press and hold the POWER Button for about 1 second to pause the music and connect with the most recent number.

\* This feature may slightly differ depending on your 'Bluetooth Device'.



## 9. USING THE CALL FUNCTION

### 1) Accepting a Call

- When the incoming call tone is heard through the headphones, tap touch panel twice quickly or press the POWER button. (Volume control : While on a call, use the touch panel to control volume)

### 2) Ending a Call

- While on a call, shortly pressing the POWER Button or tap touch panel twice quickly to end the call.

### 3) Rejecting a Call

- When the incoming call tone is heard through the headphones, press and holds the POWER Button for about 1 second.

(After hearing the 'beep' signal tone, the incoming call is rejected and the voice guidance "Call Ignored" is heard.)

### 4) Making a Call

- Press and hold the POWER Button for about 1 second. The 'Redialing' voice guidance is provided and a call is connected with the most recent number.

※ This feature may slightly differ depending on your 'Bluetooth Device'.

### 5) Call Waiting

- When there is another incoming call while on a call. (Supported only when having applied for this service with your telecom provider.)

- Press and hold the POWER Button for about 1 second to place the current call on call waiting and connect the second call.

(Press the POWER Button again for about 1 second to switch between the waiting call and connected call.)

- Shortly press the POWER Button to end the current call and connect the second call.

### 6) Switching between the Device and Mobile Phone

- To switch the call from mobile phone to the headphone, press the POWER Button for 1 second.

Status	LED Indicator
Incoming Bell/Outgoing Bell	Purple light blinks in 1.5 second intervals
During Call	Blue light slowly blinks every 6 seconds
When there are two calls connected	Purple light slowly blinks every 6 seconds

### ※ Battery use time

Classification	Usage time	
Continuous Talk Time	MAX. 20 hours	
Continuous Music Play Time	aptX High Quality Sound Mode	MAX. 18 hours
	AAC High Quality Sound Mode	MAX. 22 hours
	SBC Mode	MAX. 20 hours
Stand by Time	MAX. 110 hours	
Full Charge Time	About 3 hours	

\* The above times may differ depending on the environment in which it is used.

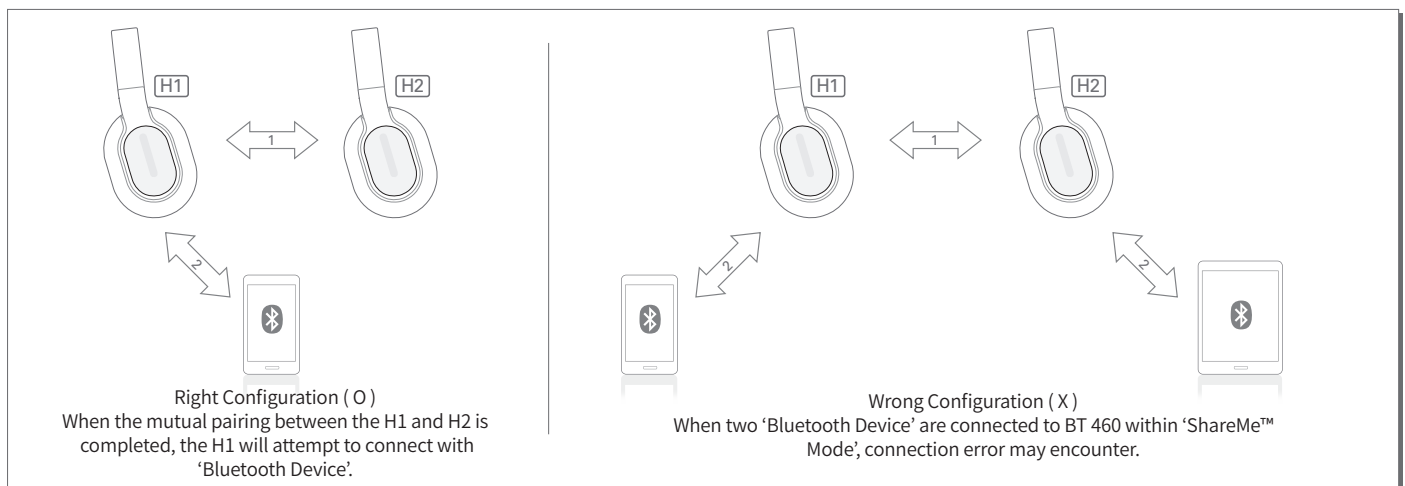
## 10. ShareMe™ FEATURE

- 1) The Phiaton BT 460 allows you to share your entertainment with another person wearing another set of Phiaton BT 460 headset featuring Creative ShareMe™ connectivity.
- 2) Set up the ShareMe Function
  - The BT 460 which is providing shared-music is named as H1, the BT 460 which is receiving shared-music named as H2.
  - First, pair the H1 to the 'Bluetooth Device'.
  - Press the Power button of the H1 for 5 seconds to enter again 'pairing mode'. The H1 will be disconnected from the 'Bluetooth Device' but retained in device list registry.
  - The H1 and H2 will be paired with following procedure.

BT 460	Operation	LED Indicator	Voice Guidance
H1 ShareMe™ Main Mode	In the 'Pairing Mode', press the POWER Button twice to go ShareMe™ Main Mode.	Blue light blinks	Beep~Beep ↗
H2 ShareMe™ Secondary Mode	In the 'Pairing Mode', press the POWER Button twice to go ShareMe™ Main Mode, and then press the POWER button twice again to go SharMe Secondary Mode. * If the POWER button is pressed twice again, the mode is changed to Main mode.	Red light blinks	Beep~Beep ↘
H1 and H2 Pairing	When both the H1 and H2 are in 'ShareMe™ Mode', the H1 and H2 will be paired together within 5 seconds.	After Purple light blinks twice, Blue light blinks once in 6 second intervals	Device connected

- When the mutual pairing between the H1 and H2 is completed, the H1 will attempt to connect with 'Bluetooth Device'.
- If the H1 is not connected with 'Bluetooth Device' automatically, select the 'BT 460 in the device list registered on the 'Bluetooth Device'.
- Use the headphones to play and share music.

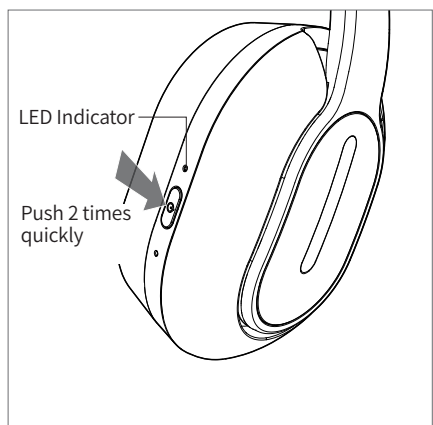
### 3) Configuring connections for the BT 460 (H1 and H2) and 'Bluetooth Device'



#### 4) User Tips

- When you control the music playback/stop and previous/next track in H1, it will also affect H2.
- The volume of H1 and H2 is controlled respectively and each volume control does not affect the other.
- When you press PLAY/PAUSE button in the H2, the music of H2 will be muted or muted off. It will not affect the music play of H1.
- In H2, the previous/next track is not controlled.
- Call function is supported only in H1.
- During music play in 'ShareMe™ Mode' the H1 voice guidance is not provided.
- Playing music and sharing in 'ShareMe™ Mode' requires higher power consumption and causes shorter battery life.
- When 'ShareMe™ Mode' is not used, turn power off in order to disconnect between H1 and H2. Otherwise, it may cause battery drain.

## 11. MISCELLANEOUS FEATURES



### 1) Checking Remaining Battery

- With the power on, shortly press the POWER Button twice to display the remaining battery indicator (LED).
- For Apple iOS version 5 or above, the remaining battery is displayed at the top right side of the screen.

Remaining Battery	LED Indicator	Voice Guidance
Over 80%	Blue light lights up for 1 second	Battery is full
80% ~ 30%	Purple light lights up for 1 second	Battery is moderate
Under 30%	Red light lights up for 1 second	Battery is low
Under 3%	Red light lights up for 1 second and the alarm will sound	Please recharge

\* The Battery Check feature will not operate while the battery is being charged.

\* When the battery charge is under 3%, the alarm will sound.

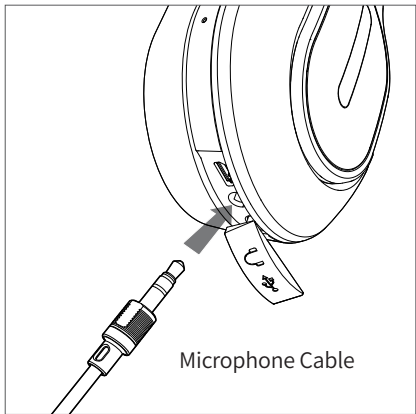
If use is continued for several minutes the battery will be completely drained, the 'Power Off' voice guidance is provided and the power will automatically turn off.

### 2) Resetting the Device

- To reset to factory settings, at power off, press the POWER Button for over 10 seconds.

Operation	LED Indicator	Voice Guidance
Factory Settings	Purple light lights up twice	After 'beep' signal tone twice, "POWER ON, Pairing Mode activated"

## 12. CONNECTING AND USING THE MICROPHONE CABLE



1) BT 460 can also be used with the audio cable connected as shown in the figure.

\* When connected to a device with the provided audio cable, the Bluetooth remote features are disabled and you must use the device you are connected to answer calls and play music.

## 13. SPECIFICATIONS

### 1) Main body

- Communication Network: Bluetooth 4.0
- Output Power: Power Class 2
- Max. Communication Range: Discoverable within 10 m / 33 ft.
- Full Charging Time: 3 Hours
- Call Time : 20 Hours
- Music Play Time : 20 Hours
- Standby Time : 110 Hours
- Operating Frequency: 2.4 GHz (2.402 GHz ~ 2.480 GHz)
- Bluetooth Profile Support: HFP v1.6 / HSP v1.2 / A2DP v1.3 / AVRCP v1.5
- Audio Codec: SBC, aptX, AAC  
(If the 'Bluetooth Device' can not support aptX or AAC mode, it will be connected with SBC mode.)
- Battery: Lithium Polymer DC 3.7 V / 510 mAh
- Microphone Frequency Range: 50 ~ 4,000 Hz
- Microphone Sensitivity: -42 dB
- Support Echo Cancellation and Talk Noise: cVc® Solution
- Operating Temperature: -20 ~ 45 °C
- Size: 180 x 170 x 60 mm (H x W x D) / 7.3 x 6.5 x 2.9 inch (H x W x D)
- Weight: 240 g (0.53 lb)

### 2) Headphones

- Type:  $\Phi$  40 mm Driver Units
- Sensitivity: 99 dB/mW
- Frequency Response: 10 Hz ~ 27 kHz
- Impedance: 32 ohms

\* The specifications are subject to change without prior notice for quality improvement.

## 14. PRODUCT SYMPTOMS AND TROUBLESHOOTING

### 1) The power does not turn on:

- Charge the device. If the power does not turn on even after charging, contact Phiaton Customer Service.

### 2) The device does not charge:

- Check whether the USB charging cable has been properly connected with the device.
- Check whether the PC power is on and that it has been properly connected.
- When using a separately purchased USB AC adaptor, check to see that it has been properly connected.

### 3) The device does not pair:

- Check whether the power of the 'The device does not pair' you want to connect is on.
- Check whether the Bluetooth feature within the 'Bluetooth Device' you want to connect is enabled.
- Check whether the 'Bluetooth Device' you want to connect is within the supported range.  
(Pairing is supported only when within 3 feet.)
- Check whether the Bluetooth profile within the 'Bluetooth Device' is compatible.

### 4) Music cannot be played:

- Check whether the power of the device and 'Bluetooth Device' is on.
- Check whether music is being played within the connected 'Bluetooth Device'.
- Check whether the volume within the connected 'Bluetooth Device' is low.
- When using an extension cord, check to see that the plug is properly connected.

### 5) Noise is heard or the sound lags:

- Check whether there is an electronic device using the 2.4 GHz frequency band nearby the device and connected 'Bluetooth Device'.
- Check whether the connected 'Bluetooth Device' is far away from this device.  
(Maximum communication range: within 33 feet.)

### 6) The music sound quality is low:

- If the 'Bluetooth Device' you are trying to connect with this device is accessed to HSP, change the access to A2DP.

### 7) The other party cannot be heard while on a call:

- Check whether the power of the 'Bluetooth Device' you want to connect is on.
- Access Bluetooth through HFP or HSP.
- Check whether the volume within the connected 'Bluetooth Device' is low.

### 8) Product does not operate or operation has stopped:

- Reset the device by simultaneously pressing the power button and connecting the USB charging cable.  
This will power off the device, but previously paired devices won't be deleted.

## 9) The device is paired with PC/Laptop but does not work:

- PC/Laptop is equipped with various Bluetooth drivers depending on the manufacturer and it is possible it does not support BT 460.
- Please contact to PC/Laptop manufacturer to download the latest software driver or for further assistance in connecting to a 'Bluetooth Device'.

## 15. FCC COMPLIANCE INFORMATION

FCC ID: V2R-BT460

This device complies with part 15 of FCC Rules. Operation is subject to the following two conditions: (1) This device may not cause harmful interference, and (2) this device must accept any interference received, including interference that may cause undesired operation.

Information to the user:

NOTE: This equipment has been tested and found to comply with limits for a Class B digital device, pursuant to part 15 of the FCC Rules. These limits are designed to provide reasonable protection against harmful interference in a residential installation. This equipment generates, use and can radiate radio frequency energy and, if not installed and used in accordance with the instructions, may cause harmful interference to radio communications. However there is no guarantee that interference will not occur in a particular installation, if this equipment does cause harmful interference to radio or television reception, which can be determined by turning the equipment off and on, the user is encouraged to try the correct interference by one or more of the following measures:

- Reorient or relocate the receiving antenna.
- Increase the separation between the equipment and receiver.
- Connect the equipment into an outlet on a circuit different from that to which the receiver is connected.
- Consult the dealer or an experienced radio/TV technician for help.

CAUTION TO USER: Changes or modifications not expressly approved by the party reasonable for compliance could void the user's authority to operate the equipment.

CAUTION TO USER: Changes or modifications not expressly approved by the party reasonable for compliance could void the user's authority to operate the equipment.

## 16. CE COMPLIANCE INFORMATION

Phiaton, hereby declares that this BT 460 is in compliance with the essential requirements and other relevant provisions of directive 1999/5/EC.



© 2016 PHIATON Corporation  
18662 MacArthur Blvd., STE 405  
Irvine, California 92612 USA

[www.phiaton.com](http://www.phiaton.com)  
[www.phiaton.co.kr](http://www.phiaton.co.kr)