



Mosaic Slipper Socks

**Sizes:**

- Women's M (L)

Materials:

- Main Color (MC)
100 g worsted weight yarn
- Contrasting Color (CC)
25 g worsted weight yarn

Needles:

- US 7

Notions:

- Tapestry Needle

Gauge:

20 sts x 42 rows = 4 in in knit stitch

Stitches Used/Abbreviations

CO: Cast On

K: Knit

Sl: Slip Stitch

WYIF: With Yarn in Front (*Yarn forward, sl st purlwise, yarn back*)

Pattern

Cast on 38 (43) stitches in preferred cast on method with MC.

Row 1 (RS): Sl 1, K 37 (42)

Repeat Row 1 until the piece measures 3". Note the number of rows you needed to work to arrive at 3". You'll work the same number or rows after working the mosaic inset.

Beginning on the RS, bind off 17 (22) stitches. Begin working the following mosaic pattern on the inset.

A Note on Mosaic Knitting – The mosaic design in this pattern uses two different colors of yarn that are worked in pairs of rows (RS and WS) and switched after these two rows. On pairs of rows using the MC, the CC stitches are slipped purlwise on the RS and on the WS, slipped purlwise With Yarn In Front (WYIF). On rows using the CC, the MC stitches are worked the same way. You carry your yarn up the right-hand side of the pattern - - - no need to cut your strands!

Mosaic Inset Pattern

Row 1 (RS, MC): Knit

Row 2 (WS, MC): Sl1, K across

Row 3 (RS, CC): K2, Sl1, K3, Sl 1, K7, Sl1, K3, Sl1, K2

©Andrea J. Springer for The Wool Market & DIY School 2021
420 North Main, Hutchinson, KS 67501
620.694.3250 woolmarketdiy.net wmdiyschool@gmail.com

Mosaic Inset Pattern – con't

Row 4 (WS, CC): Sl1, K1, Sl1 WYIF, K3, Sl1 WYIF, K7, Sl1 WYIF, K3, Sl1 WYIF, K2
Row 5 (RS, MC): K3, Sl1, K3, Sl1, K1, Sl1, K1, Sl1, K1, Sl1, K3, Sl1, K3
Row 6 (WS, MC): Sl 1, K2, Sl1 WYIF, K3, Sl1 WYIF, K1, Sl1 WYIF, K1, Sl1 WYIF, K1, Sl1 WYIF, K3, Sl1 WYIF, K3
Row 7 (RS, CC): K2, Sl1, K1, Sl1, K5, Sl1, K5, Sl1, K1, Sl1, K2
Row 8 (WS, CC): Sl1, K1, Sl1 WYIF, K1, Sl1 WYIF, K5, Sl1 WYIF, K5, Sl1 WYIF, K1, Sl1, K2
Row 9 (RS, MC): K5, Sl1, K1, Sl1, K5, Sl1, K1, Sl1, K5
Row 10 (WS, MC): Sl1, K4, Sl1 WYIF, K1, Sl1 WYIF, K5, Sl1 WYIF, K1, Sl1 WYIF, K5
Row 11 (RS, CC): K2, Sl1, K5, Sl1, K3, Sl1, K5, Sl1, K2
Row 12 (WS, CC): Sl1, K1, Sl1 WYIF, K5, Sl1 WYIF, K3, Sl1 WYIF, K5, Sl1 WYIF, K2
Row 13 (RS, MC): K3, Sl1, K1, Sl1, K3, Sl1, K1, Sl1, K3, Sl1, K1, Sl1, K3
Row 14 (WS, MC): Sl1, K2, Sl1 WYIF, K1, Sl1 WYIF, K3, Sl1 WYIF, K1, Sl1 WYIF, K3, Sl1 WYIF, K1, Sl1 WYIF, K3
Row 15 (RS, CC): K2, Sl1, K3, Sl1, K3, Sl1, K3, Sl1, K3, Sl1, K2
Row 16 (WS, CC): Sl1, K1, Sl1 WYIF, K3, Sl1 WYIF, K3, Sl1 WYIF, K3, Sl1 WYIF, K3, Sl1 WYIF, K2
Row 17 (RS MC): K3, Sl1, K3, Sl1, K5, Sl1, K3, Sl1, K3
Row 18 (WS MC): Sl1, K2, Sl1 WYIF, K3, Sl1 WYIF, K5, Sl1 WYIF, K3, Sl1 WYIF, K3
Row 19 (RS, CC): K2, Sl1, K3, Sl1, K3, Sl1, K3, Sl1, K3, Sl1, K2
Row 20 (WS, CC): Sl1, K1, Sl1 WYIF, K3, Sl1 WYIF, K3, Sl1 WYIF, K3, Sl1 WYIF, K3, Sl1 WYIF, K2
Row 21 (RS, MC): K3, Sl1, K1, Sl1, K3, Sl1, K1, Sl1, K3, Sl1, K1, Sl1, K3
Row 22 (WS, MC): Sl1, K2, Sl1 WYIF, K1, Sl1 WYIF, K3, Sl1 WYIF, K1, Sl1 WYIF, K3, Sl1 WYIF, K1, Sl1 WYIF, K3
Row 23 (RS, CC): K2, Sl1, K5, Sl1, K3, Sl1, K5, Sl1, K2
Row 24 (WS, CC): Sl1, K1, Sl1 WYIF, K5, Sl1 WYIF, K3, Sl1 WYIF, K5, Sl1 WYIF, K2
Row 25 (RS, MC): K5, Sl1, K1, Sl1, K5, Sl1, K1, Sl1, K5
Row 26 (WS, MC): Sl1, K4, Sl1 WYIF, K1, Sl1 WYIF, K5, Sl1 WYIF, K1, Sl1 WYIF, K5
Row 27 (RS, CC): K2, Sl1, K1, Sl1, K5, Sl1, K5, Sl1, K1, Sl1, K2
Row 28 (WS, CC): Sl1, K1, Sl1 WYIF, K1, Sl1 WYIF, K5, Sl1 WYIF, K5, Sl1 WYIF, K1, Sl1, K2
Row 29 (RS, MC): K3, Sl1, K3, Sl1, K1, Sl1, K1, Sl1, K1, Sl1, K3, Sl1, K3
Row 30 (WS, MC): Sl 1, K2, Sl1 WYIF, K3, Sl1 WYIF, K1, Sl1 WYIF, K1, Sl1 WYIF, K1, Sl1 WYIF, K3, Sl1 WYIF, K3
Row 31 (RS, CC): K2, Sl1, K3, Sl 1, K7, Sl1, K3, Sl1, K2
Row 32 (WS, CC): Sl1, K1, Sl1 WYIF, K3, Sl1 WYIF, K7, Sl1 WYIF, K3, Sl1 WYIF, K2
Row 33 (RS, MC): Knit
Row 34 (WS, MC): Sl1, K across

**Mosaic Inset Chart found on Page 3*

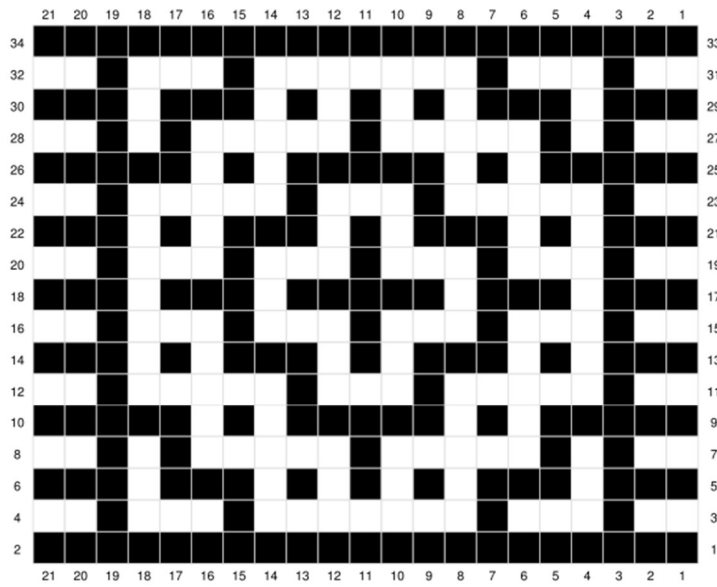
At the end of Row 34, cast on 17 (22) stitches using the Backward Loop or Knitted Cast On. You now have 38 (43) stitches on your needle.

Next row (RS): Sl 1, K 37 (42)

Repeat Row 1 until the piece measures 3" or the same number of rows after working the mosaic inset. Bind off all stitches.

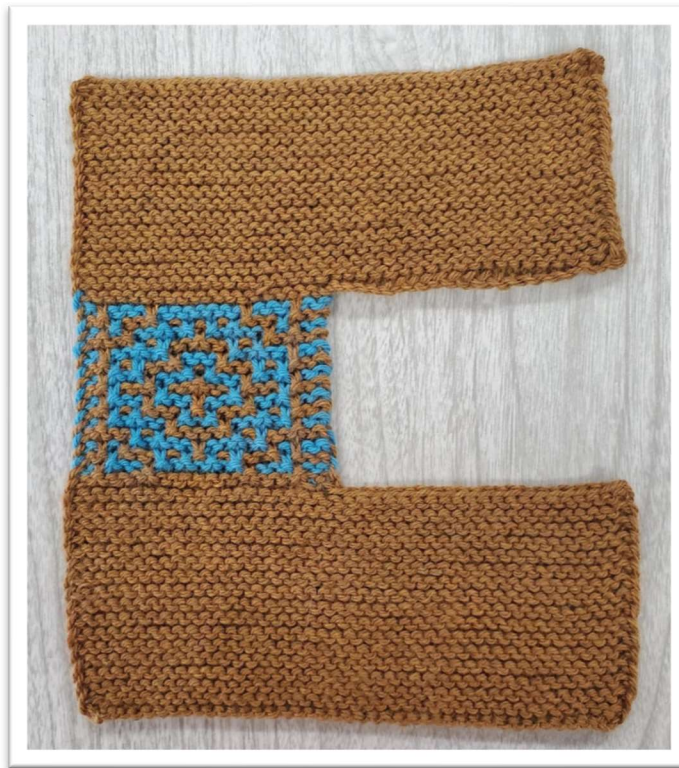
Finishing

Beginning at the top of the heel, stitch the short sides together, followed by the long sides on the sole of the foot. Use the remaining yarn to gather the toe like the top of a stocking hat. Secure ends.



- Contrast Color (CC)
- Main Color (MC)
- No stitch

Designed with Stitch Fiddle
www.StitchFiddle.com



©Andrea J. Springer for The Wool Market & DIY School 2021
420 North Main, Hutchinson, KS 67501
620.694.3250 woolmarketdiy.net wmdiyschool@gmail.com