

NEW!

Template[®] Clear

UNIVERSAL CLEAR MATRIX MATERIAL

Provisional Fabrication Just Got Easier

The TEMPLATE[®] line of matrix materials from Clinician's Choice is specially designed for provisional matrix fabrication. Unlike bite registration or putty materials, TEMPLATE matrix materials are more accurate and dramatically reduce provisional fabrication time. We are proud to introduce TEMPLATE CLEAR universal matrix material. The original and extremely popular TEMPLATE Ultra Quick Matrix Material continues to help dentists make better temporaries faster with its unique 30 second cure time, ideal for single or double restoration cases in either anterior or posterior regions. There are many techniques for provisional fabrication that require different material properties such as veneer temporaries or when a light or dual cure provisional material is utilized.

TEMPLATE CLEAR is water clear and provides excellent visibility throughout the fabrication process. Now you can visually verify if you have the right amount of provisional material for the case at hand, preventing voids or overfill situations that lead to more required chair time. TEMPLATE CLEAR has excellent flow properties, capturing the most precise morphology and is especially effective at creating defined margins and minimizing flash.

TEMPLATE CLEAR is the very best matrix material for veneer temporaries. When used with a Clinician's Choice clear, non perforated impression tray, you have a matrix with a window effect for the ultimate in clarity. This allows you to add more material to prevent voids plus easy light curing directly through the matrix.

Use TEMPLATE CLEAR in the anterior or posterior, for one or multiple restorations, and no other material is better for the occlusal matrix technique for direct posterior composite restorations.



Backed By Our
TRY-IT
Guarantee

We guarantee you'll love TEMPLATE CLEAR, or return it to us within 30 days for a full refund!

- Template Clear
- # 027300 2 pack
- # 017916 6 Pack
- # 017916 12 Pack

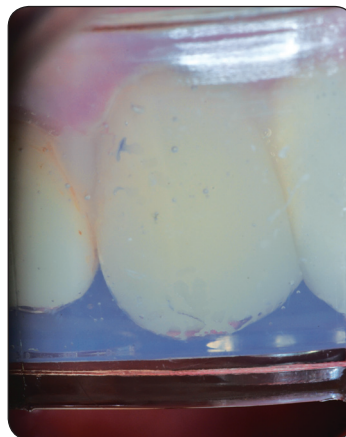
- Universal Anterior Tray
- # 036603 Upper/Lower 6 Pack
- # 036253 Upper/Lower 25 Pack
- Full Arch Upper Tray
- # 036601 Medium 6 Pack
- # 036251 Medium 25 Pack
- Full Arch Lower Tray
- # 036602 Medium 6 Pack
- # 036252 Medium 25 Pack
- Quadrant Tray
- # 036604 Left 6 Pack
- # 036255 Left 25 Pack
- # 036605 Right 6 Pack
- # 036254 Right 25 Pack



Template Clear is best used with a non-perforated tray for maximum clarity and can be used in full arch or sectional trays.



Water clear Template Clear provides excellent visibility throughout the provisional process. After loading the tray with a provisional composite and re-seating, potential voids are easily identified and if a light cured provisional material is used (ie. veneer temps), Template Clear's clarity will allow light curing directly through it.



The Template Clear matrix demonstrating perfect clarity in the anterior.

ALSO TRY
INEXPENSIVE, NON-PERFORATED
CLINICIAN'S CHOICE
CLEAR IMPRESSION TRAYS

Backed By Our
TRY-IT
Guarantee

ORDER DIRECT:

CLINICAL RESEARCH DENTAL

1-800-265-3444

www.clinicalresearchdental.com