

# ENDOGUIDE™

PRECISION MICRO ENDODONTIC BURS

Maximize Treatment Efficiency While Conserving  
Healthy Tooth Structure

**ENDOGUIDE™  
MOLAR  
KIT**  
FOR CANAL  
EXPLORATION



**ENDOGUIDE™  
ANTERIOR/  
BICUSPID KIT**  
FOR CANAL  
EXPLORATION  
AND ACCESS



**WHITE®**



- SS White® proudly announces **EndoGuide™ Micro Endodontic Burs** for precision access and exploration of root canals. SS White has developed these innovative micro endodontic burs in conjunction with Dr. David J. Clark and Dr. John A. Khademi, two of today's leading experts in micro endodontic procedures.
- EndoGuide™ Burs are a **unique set of eight burs** for non-surgical endodontic treatment, ideally suited for microscope-enhanced dentistry. Each EndoGuide™ Bur features a **conical shaped, micro-diameter tip** not found on conventional instruments used for access and exploration. EndoGuide™ Burs are ergonomically designed and **save procedure time** by providing **precise, efficient** canal access and exploration **with fewer instruments**. Clinicians using EndoGuide™ Burs report **enhanced productivity** due to the reduced instrumentation needed to achieve canal access and exploration.



# ENDOGUIDE™

## PRECISION MICRO ENDODONTIC BURS

EndoGuide™ Features	EndoGuide™ Benefits
Patented <sup>1</sup> , conical shaped micro-diameter tip acts as a self-centering guide	Permits straight-line access to canals, while conserving vital peri-cervical dentin
Blade design efficiently cuts in vertical and lateral directions	Reduces bur “runoff”, often associated with round burs, that causes gouging and ledging which can lead to perforation
Burs leave a polished dentin surface as they cut	Easier visual identification of hidden canals for more efficient canal mapping
Diminutive bur size and shape ideally suited for microscope-enhanced endodontics	Permits less obstructed view of pulp chamber and canal orifice
Kits contain all instruments needed for effective endodontic access and exploration	Eliminates dependence on more costly instruments often used for endodontic access and exploration
Minimizes the use of endodontic ultrasonic tips	Saves up to five times the replacement costs associated with costly ultrasonic tips
1. U.S. Patent No. 6,257,889 B1	

# ENDOGUIDE™

PRECISION MICRO ENDODONTIC BURS

## EndoGuide™ Anterior/Bicuspid Kit

For Endodontic Access & Exploration (Item #18052)

Ideally suited for locating and accessing single root canals in anterior and bicuspid teeth. Contains all instrumentation to create endodontic access through metal, porcelain and zirconia featuring SS White® Great White® #2 metal cutting bur, Great White® Z Diamonds for access through zirconia, and four EndoGuide™ burs for virgin tooth access and de-roofing as well as troughing, enlarging and exploring canals.



EndoGuide™ Anterior/Bicuspid Kit

## EndoGuide™ Molar Kit

For Endodontic Exploration (Item #18051)

Contains seven EndoGuide™ Burs designed to increase visibility, control and efficiency during endodontic exploration in molars while de-roofing, locating hidden canals, enlarging deep orifices, navigating deeply calcified canals and troughing between canals.



EndoGuide™ Molar Kit

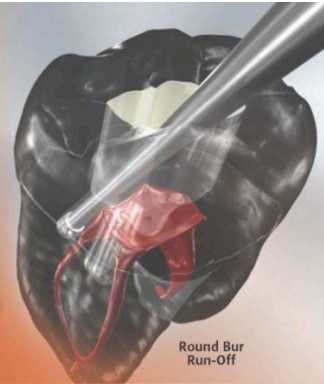
## EndoGuide™ Bur 5 Packs

An EndoGuide™ Kit and Bur reference guide is packaged along with directions for use with each EndoGuide™ Kit and each individual 5-pack of EndoGuide™ Burs.



EndoGuide™ Burs 5-pack of individual burs

Do round burs lead you down the wrong path during endodontic access?



**TAKE A STRAIGHT-LINE PATH TO CANAL ACCESS**

*EndoGuide™ Burs patented<sup>1</sup> conical-shaped, micro-diameter tip acts as a self-centering guide to create precise endodontic access.*



EndoGuide™ Bur Series



EndoGuide™ Precision Guidance to Canal



EndoGuide™ Straight-Line Path in Canal

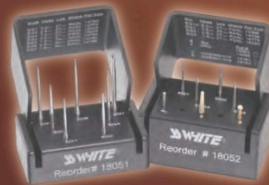
- **Tapered, Micro-diameter Tip:** Creates ideal guide-path for endodontic files
- **Funnel-shaped Bur Design:** Improves canal visualization
- **Precision Guidance:** For efficient identification of calcified/MB2 canals
- **Conserves Vital Peri-cervical Dentin:** To strengthen resistance to fracturing

"EndoGuide™ Burs have eliminated my dependence on round burs and the ultrasonic tips. EndoGuide™ Burs offer greater precision and efficiency in creating straight-line access and identifying canals in molar teeth."

– John A. Khademi, DDS, MS



- Maximize Treatment Efficiency
- Conserve Healthy Tooth Structure
- Reduce Procedure Time
- Reduce Instrumentation



EndoGuide™  
Molar Kit  
Order #18051

EndoGuide™  
Anterior/Bicuspid Kit  
Order #18052



1. U.S. Patent No. 6,257,889 B1

Clinical illustrations courtesy of Dr. Eric Herbranson and Dr. David J. Clark.

EndoGuide™ is a trademark of SS White Burs, Inc.  
SS White® is a registered trademark of SS White Burs, Inc.



800-535-2877 | [www.sswiteburs.com](http://www.sswiteburs.com)  
1145 Towbin Avenue Lakewood, New Jersey 08701



EndoGuide™ Burs Allow Clinicians to:

**Be More Conservative**

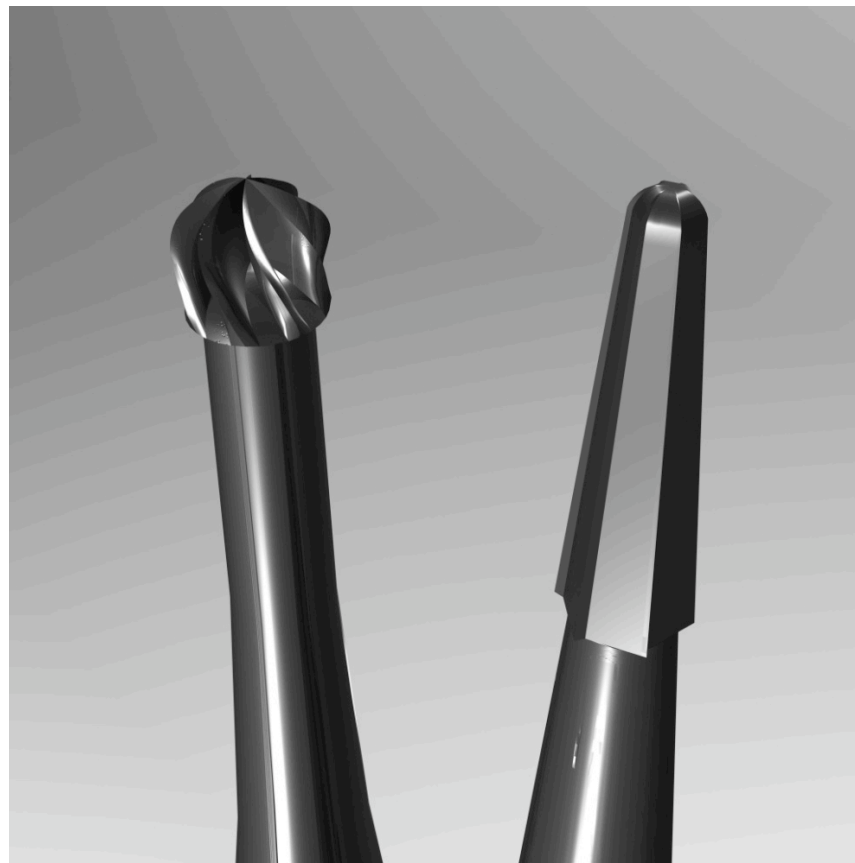
Precise guidance leads to preservation of vital peri-cervical dentin which can lead to greater restoration life.

**Be More Efficient**

Locate calcified and hidden canals more effectively and with less instrumentation, leading to a savings in chair-time and material cost.

# ENDOGUIDE™

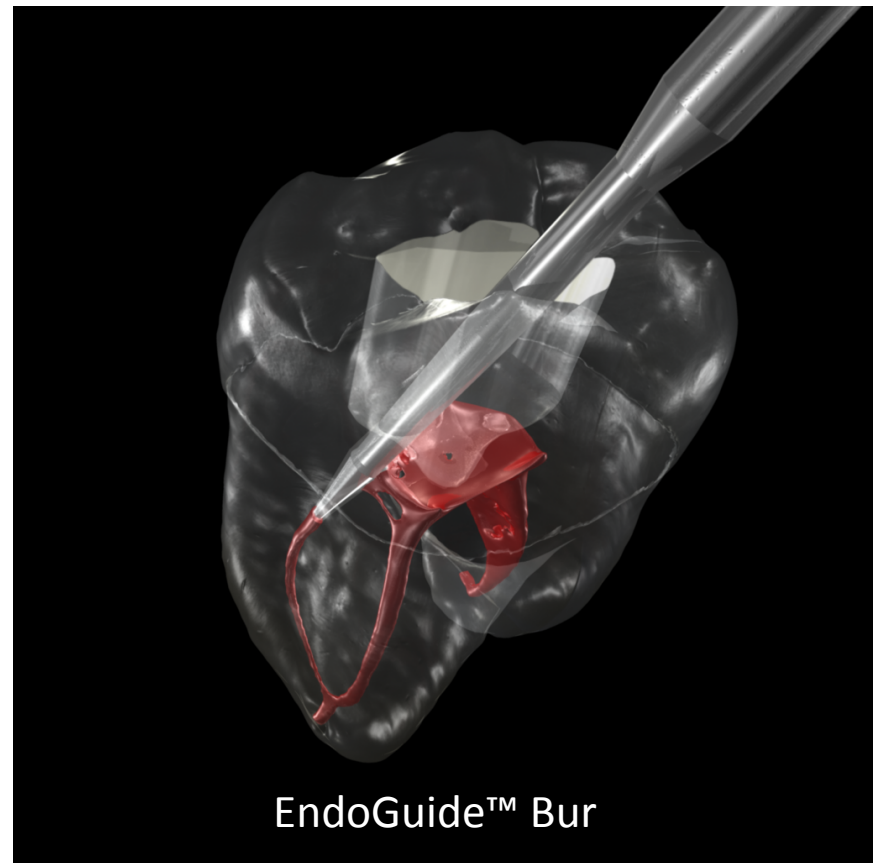
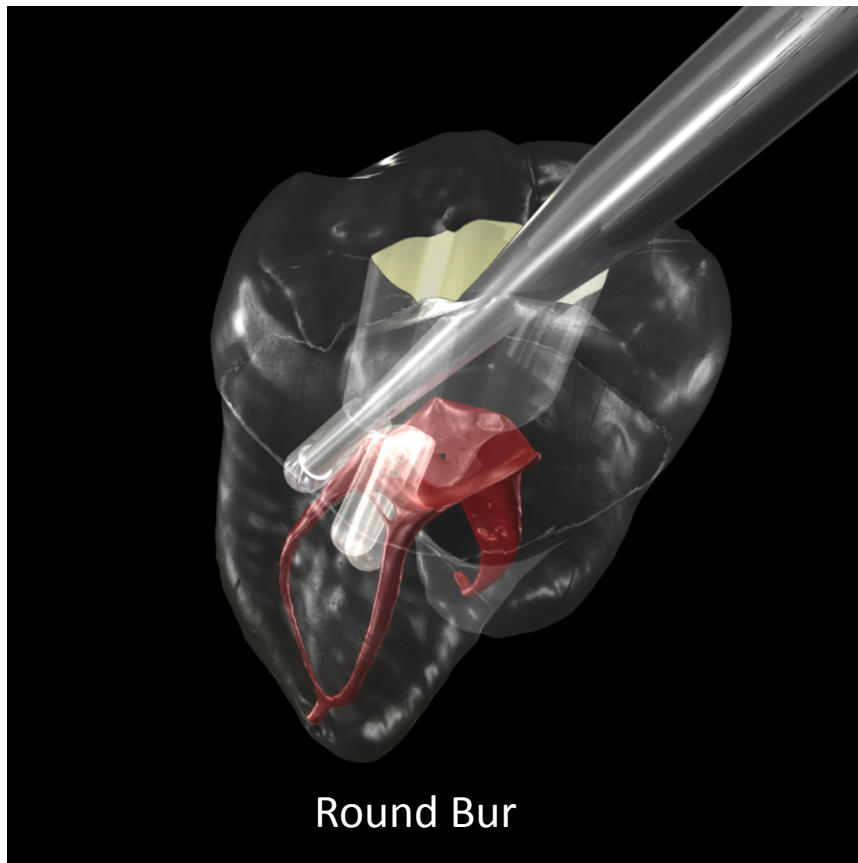
PRECISION MICRO ENDODONTIC BURS



EndoGuide™ Bur tip size is much smaller than even a #1 carbide bur allowing for greater conservation of vital peri-cervical dentin during access and exploration

# ENDOGUIDE™

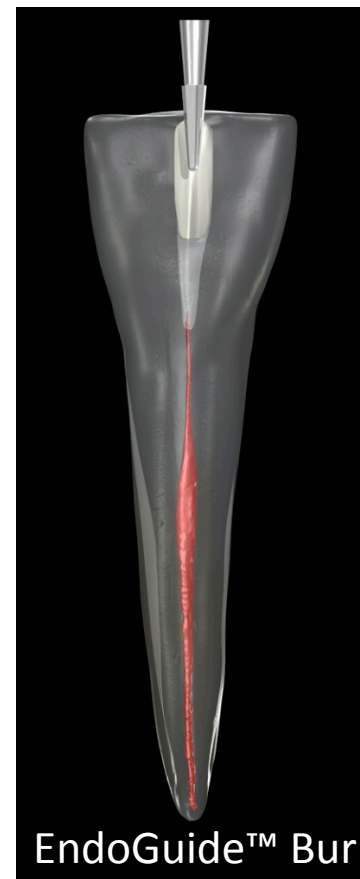
PRECISION MICRO ENDODONTIC BURS



More precise molar access and MB2 canal identification with less “runoff”

# ENDOGUIDE™

PRECISION MICRO ENDODONTIC BURS

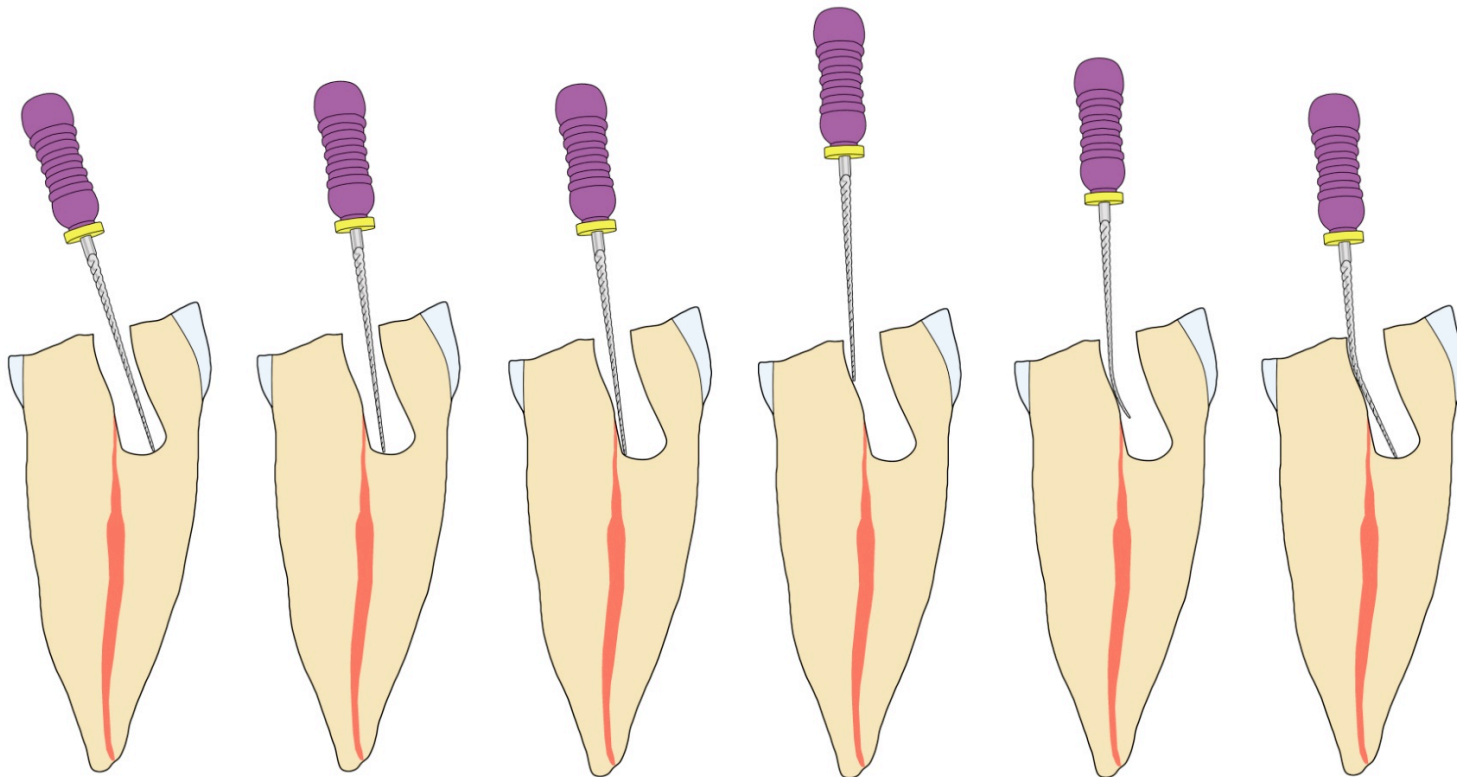


More precise anterior calcified canal access with less “runoff”



# ENDOGUIDE™

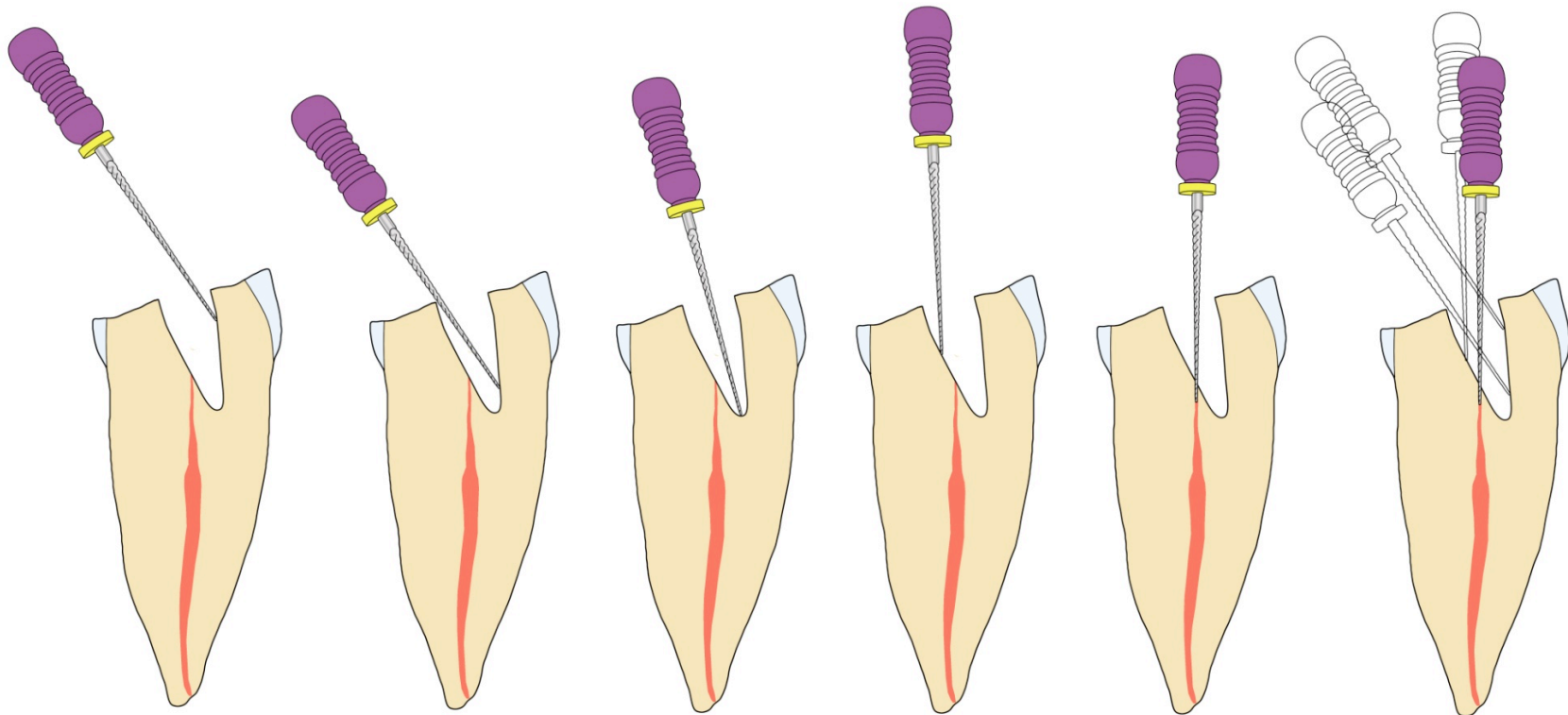
PRECISION MICRO ENDODONTIC BURS



Round bur designed parallel sided access is not conducive to canal identification and can lead to file ledging and breakage

# ENDOGUIDE™

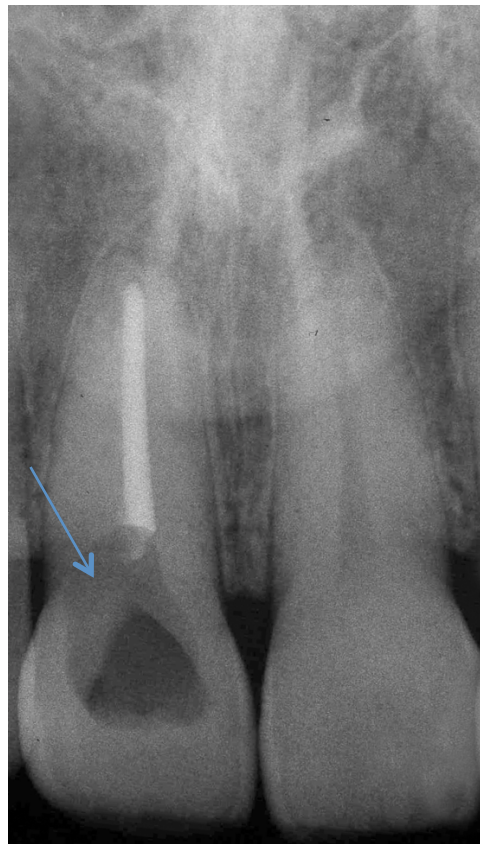
PRECISION MICRO ENDODONTIC BURS



EndoGuide™ Bur funnel shaped access design locates calcified canals more effectively, and guides the file into the canal

# ENDOGUIDE™

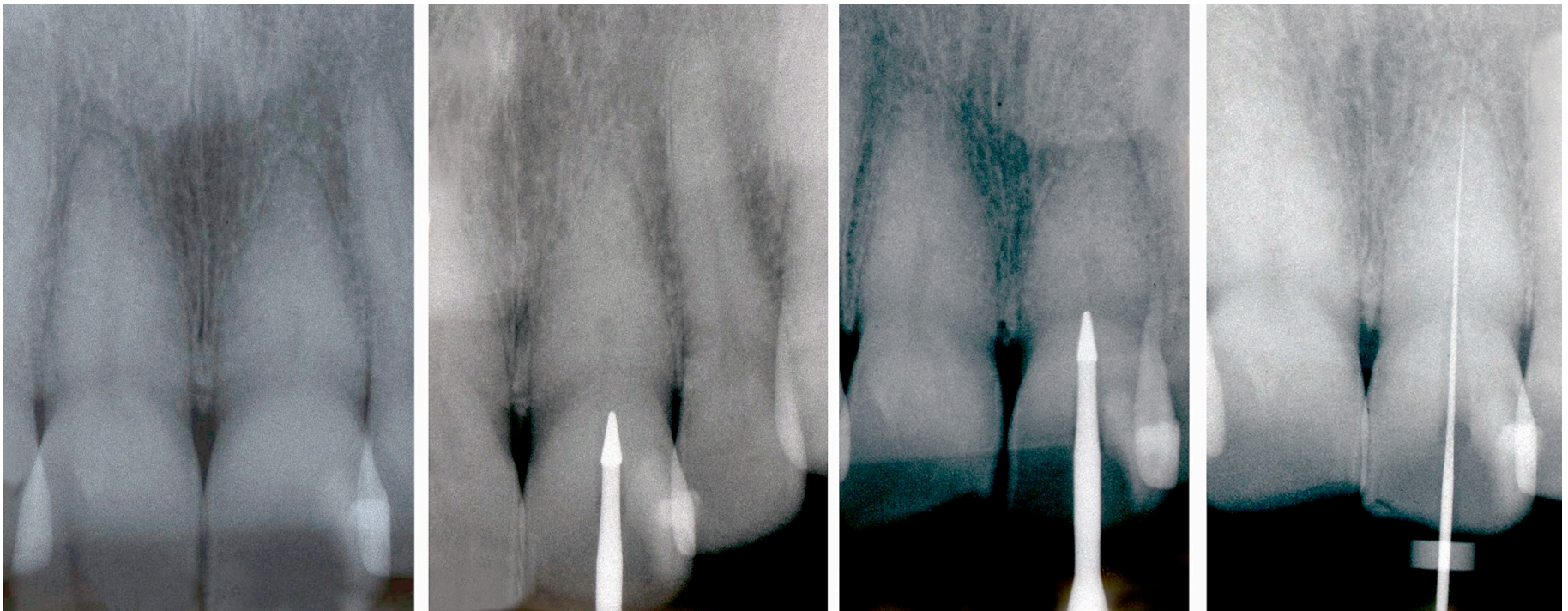
PRECISION MICRO ENDODONTIC BURS



Round bur “runoff” can create gouging, which can lead to a loss of vital peri-cervical dentin, reducing the life of the restoration

# ENDOGUIDE™

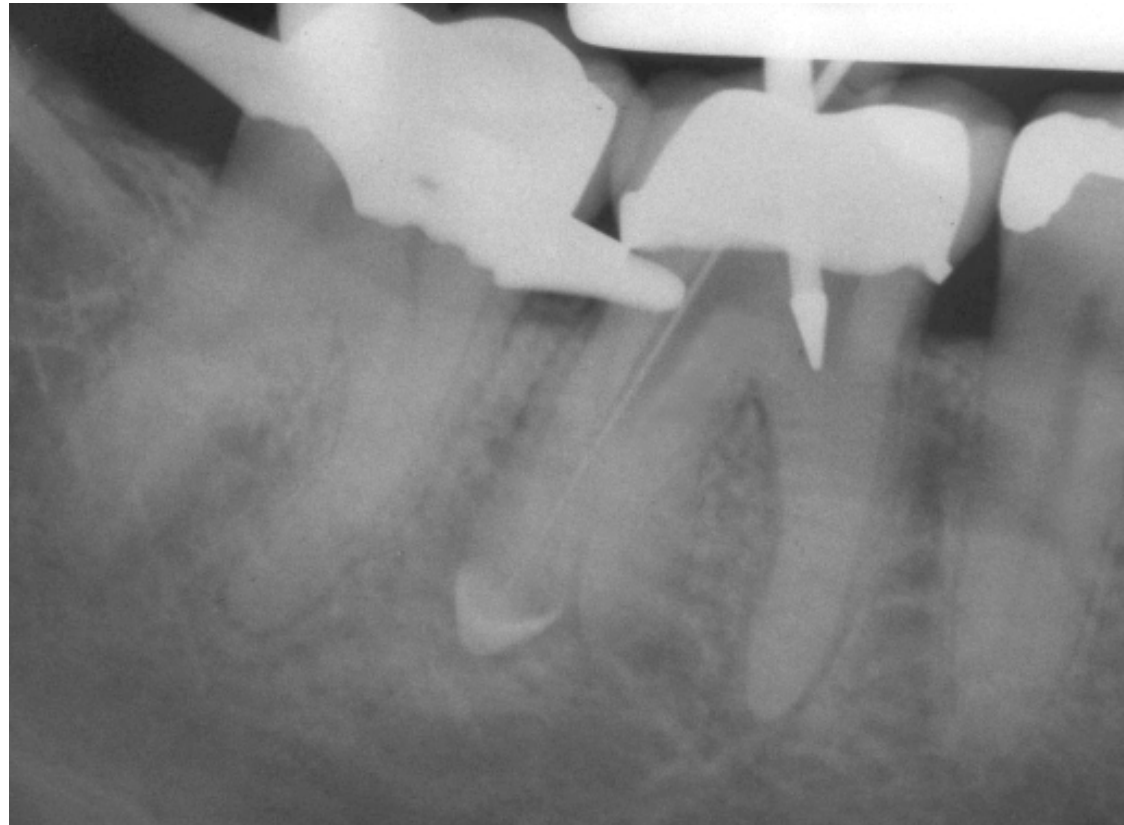
PRECISION MICRO ENDODONTIC BURS



The benefits of a conical, polished dentin access shape that is now possible with the new EndoGuide™ Bur from SS White®. Modern endodontic access is now a reality. The smooth funnel shaped access created by the conical shaped EndoGuide™ Bur helps the file find its way into the tiny RPT.

# ENDO@GUIDE™

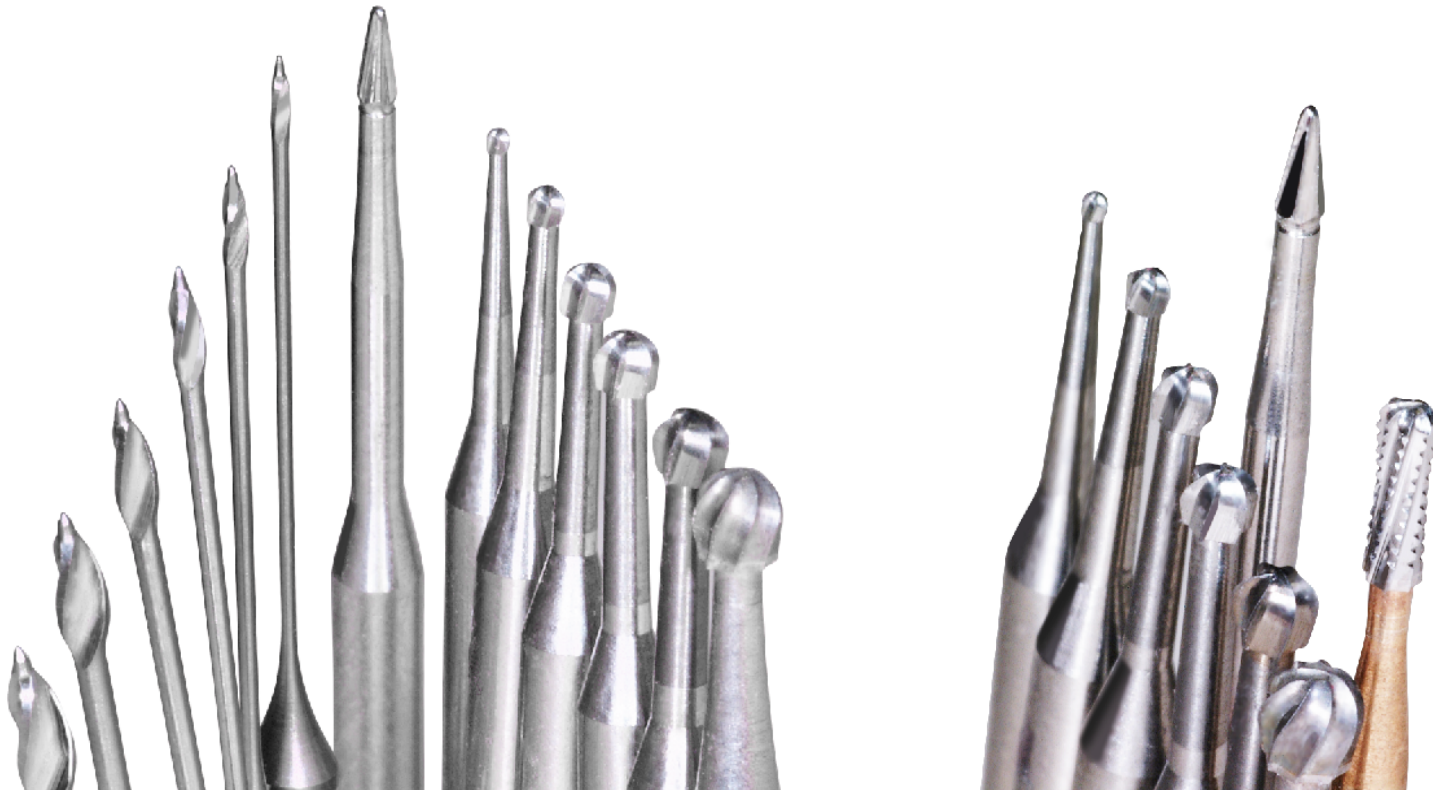
PRECISION MICRO ENDODONTIC BURS



EndoGuide™ Burs offer precise guidance into the canal, eliminating the need for round burs and Gates Glidden Burs

# ENDOGUIDE™

PRECISION MICRO ENDODONTIC BURS



EndoGuide™ Bur help to locate canals more efficiently with less instruments.  
EndoGuide™ Burs eliminate the dependence for Ultrasonic Tips, round burs and  
Gates Glidden Burs



**DESCRIPTION**

SS White® EndoGuide™ Burs are a unique series of eight burs for non-surgical root canal treatment. EndoGuide™ Burs are specifically designed to maximize efficiency during endodontic exploration and access while conserving healthy tooth structure. The patented¹ conical-shaped, micro-diameter tip of the EndoGuide™ Burs acts as a self-centering guide to permit straight-line access to canals. EndoGuide™ Burs blade design functions to effectively polish the dentin surface as it cuts, making visual dentin mapping easier and canal identification more precise.

**OPERATIONAL INSTRUCTIONS:**

1. For best product performance, always match the EndoGuide™ Bur to the task to be performed (See Table A).
2. While EndoGuide™ Burs are diminutive in size, they are very efficient cutters in both the vertical and lateral directions. To maximize cutting efficiency and avoid bur breakage, it is recommended that the clinician apply only enough pressure to guide the bur while allowing the instrument to progress through the substrate. When used for troughing procedures, a light sweeping motion is suggested. Excessive force to the instrument, especially in a lateral direction, can lead to bur damage.

Two EndoGuide™ kits address the specific endodontic needs of Anterior/Bicuspid teeth and Molar teeth. Individual EndoGuide™ Burs are also available. (See Table A).



**EndoGuide™ Anterior/Bicuspid Kit**

For Endodontic Access & Exploration (#18052)  
 Contains all instrumentation to create endodontic access through metal, porcelain and zirconia, featuring SS White® Great White® #2 metal cutting bur, Great White® Z Diamonds along with four EndoGuide™ Burs ideally suited for locating and accessing single root canals in anterior/bicuspid teeth.



**EndoGuide™ Molar Kit**

For Endodontic Exploration (#18051)  
 Contains seven EndoGuide™ Burs designed to increase visibility and control during endodontic exploration in molars when locating hidden canals, navigating deeply calcified canals and troughing between canals.

**NOTE:** Initial access and de-roofing in molars should be performed with either the Great White® #2 Bur or Great White® Z Diamonds supplied in the EndoGuide™ Anterior/Bicuspid Kit for Endodontic Access and Exploration, order #18052.



## EndoGuide™ Burs Replace/Enhance Current Instrumentation:

### Round Burs

- Standard Round Burs
- Munce Discovery Burs™
- Mueller Burs

### Flame Shaped Burs

- Gates Glidden Burs
- Peeso Reamers

### Ultrasonic Tips

Table A:

Kit and Bur Reference Guide: SS White® EndoGuide™ Precision Micro Endodontic Burs							
Bur #	Bur Photograph	Head Length (mm)	Reorder Package Size	SS White Order #	Included in: Anterior/Bicuspid Kit #18052	Included in: Molar Kit #18051	Recommended Applications
EG1A	Length = 27mm	2.5	5-pk	15066	YES	NO	• Initial access in non-restored anterior and bicuspid teeth
EG1	Length = 27mm	3.5	5-pk	14780	YES	YES	• Deep troughing • Deeper orifice enlargement and calcified canals
EG2	Length = 27mm	2.5	5-pk	14779	YES	YES	• De-roofing pulp chamber • Deep orifice enlargement and calcified canals
EG3	Length = 27mm	1.5	5-pk	15023	YES	YES	• Initial access for small incisors • Troughing and navigating calcified canals
EG4	Length = 28mm	3.5	5-pk	15029	NO	YES	• Deep troughing • Navigating super ovoid and calcified canals
EG5	Length = 34mm	1.5	5-pk	14794	NO	YES	• Deep troughing • Retrieving separated instruments • Navigating deeply calcified canals
EG6	Length = 34mm	2.5	5-pk	14795	NO	YES	
EG7	Length = 34mm	1.5	5-pk	14786	NO	YES	
SS White Great White® Carbides and Diamonds:							
GW2	Length = 19mm	4.0	10-pk 100-pk	15062 13095	YES	NO	• Metal crown access or removal • Amalgam restoration and decay removal • Molar initial access and de-roofing
GNZ 856-018 (Round End Cone)	Length = 22mm	8.0	5-pk	18161	YES	NO	• Ceramic/zirconia crown removal • Molar initial access and de-roofing
GNZ 801-018 (Round)	Length = 19mm	1.8	5-pk	18163	YES	NO	• Initial access through ceramic/zirconia crowns • Molar initial access and de-roofing

1. U.S. Patent No. 6,257,889 B1

SS White® and Great White® are registered trademarks of SS White Burs, Inc. Copyright © 2011 SS White Burs, Inc. All rights reserved.

The logo for SS White, featuring the letters 'SS' in a stylized, bold, gold-colored font, followed by the word 'WHITE' in a similar bold, gold-colored font with a registered trademark symbol (®) to its right.The logo for EndoGuide, featuring the word 'ENDO' in orange and 'GUIDE' in gold, with a stylized grey and orange circular graphic above the 'O' in 'GUIDE'. Below the main text is a black banner with the words 'PRECISION MICRO ENDODONTIC BURS' in white capital letters.

SS White is dedicated to the dealer model of distribution worldwide. This partnership with our certified dealer network insures that clinicians in over 80 countries receive unsurpassed level of training, education and quality product, insuring the success and loyalty of the dentists they service.

For more information on EndoGuide™ Burs or other SS White dental instruments, contact:

SS White Burs Inc.

1145 Towbin Avenue

Lakewood, NJ 08701

Web: [www.sswwhiteburs.com](http://www.sswwhiteburs.com)

Email: [info@sswhiteburs.com](mailto:info@sswhiteburs.com)

Phone: (732)905-1100 or Toll Free: (800)535-2877