

CLEARFIL™ SE Protect
DENTAL BONDING AGENT

Flow Chart Sheet



KURARAY MEDICAL INC.
1621 Sakazu, Kurashiki,
Okayama 710-0801, Japan

Case A

Direct restorations using light-cured composite resin or compomer

Case B

Cavity sealing as a pretreatment for indirect restorations

Case C

Treatment of hypersensitive and/or exposed root surfaces

Case D

Intraoral repairs of fractured crowns/bridges made of porcelain, hybrid ceramics or composite resin using light-cured composite resin

Case E

Surface treatment of prosthetic appliances made of porcelain, hybrid ceramics and cured composite resin

Case F

Core build-ups using light- or dual-cured composite resin

Case G

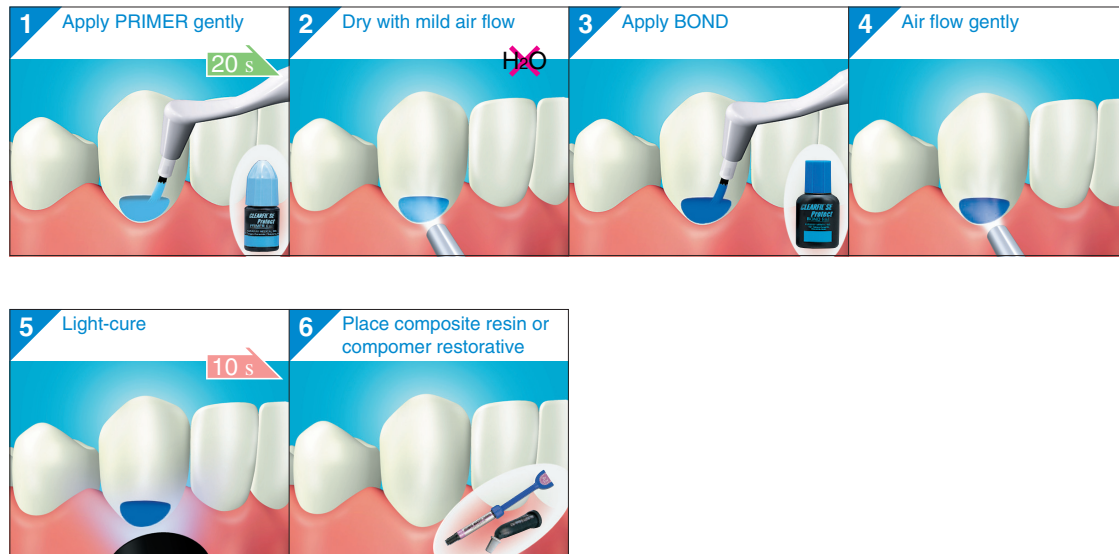
Cavity sealing under amalgam restorations

CLEARFIL™ SE Protect DENTAL BONDING AGENT KURARAY MEDICAL INC.

Case A

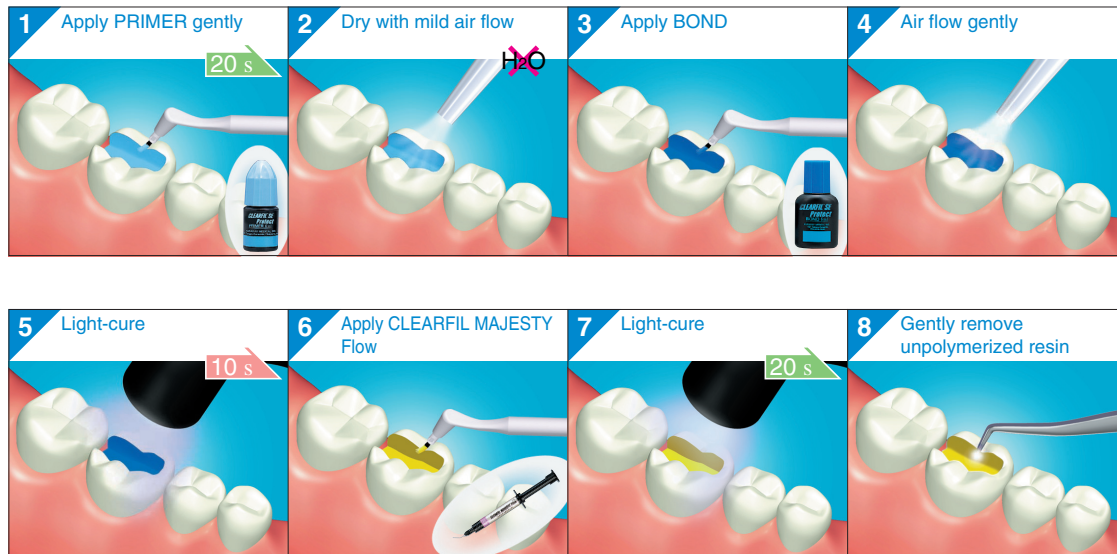
Direct restorations using light-cured composite resin or compomer

A



Case B

Cavity sealing as a pretreatment for indirect restorations



CLEARFIL™ SE Protect KURARAY MEDICAL INC.
DENTAL BONDING AGENT

Case C

Treatment of hypersensitive and/or exposed root surfaces



CLEARFIL™ SE Protect KURARAY MEDICAL INC.
DENTAL BONDING AGENT

Case D

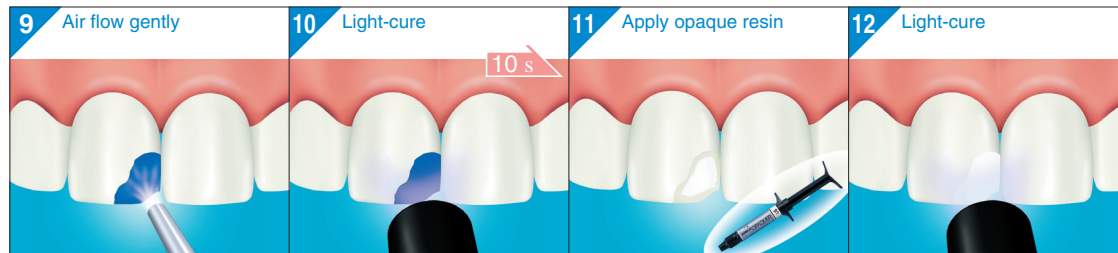
Intraoral repairs of fractured crowns/bridges made of porcelain, hybrid ceramics or composite resin using light-cured composite resin (1/2)



CLEARFIL™ SE Protect KURARAY MEDICAL INC.
DENTAL BONDING AGENT

Case D

Intraoral repairs of fractured crowns/bridges made of porcelain, hybrid ceramics or composite resin using light-cured composite resin (2/2)



CLEARFIL™ SE Protect KURARAY MEDICAL INC.
DENTAL BONDING AGENT

Case E

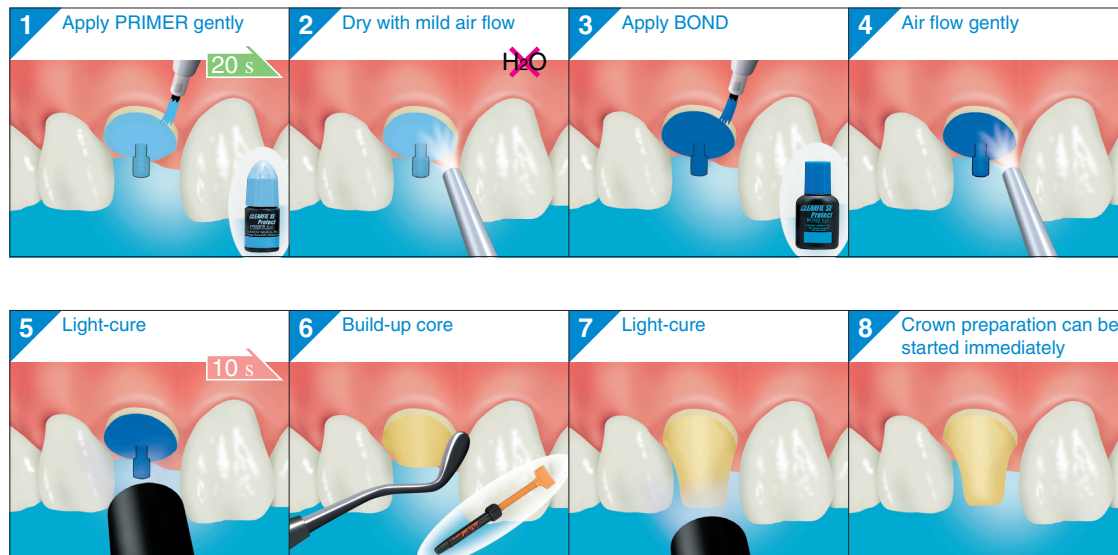
Surface treatment of prosthetic appliances made of porcelain, hybrid ceramics and cured composite resin



CLEARFIL™ SE Protect
DENTAL BONDING AGENT KURARAY MEDICAL INC.

Case F

Core build-ups using light- or dual-cured composite resin



F

CLEARFIL™ SE Protect KURARAY MEDICAL INC.
DENTAL BONDING AGENT

Case G

Cavity sealing under amalgam restorations



G