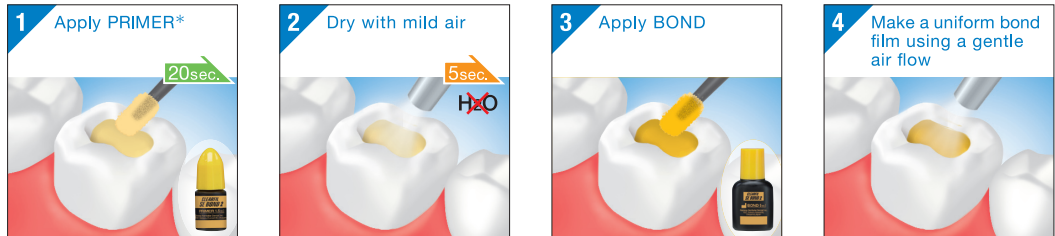


Direct restorations

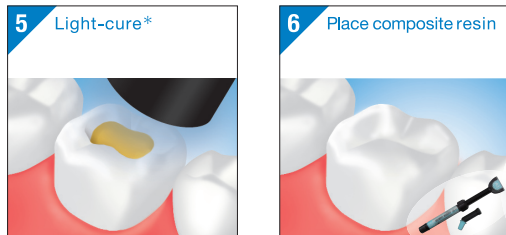
using light-cured composite resin

CLEARFIL™ SE BOND 2 Kuraray Noritake Dental Inc.

Follow the standard procedures for isolation, moisture control, cavity preparation and pulp protection



*Before applying PRIMER, selective enamel etch by phosphoric acid is an option.



*Refer to the table for light-curing time.

Intraoral repairs

of fractured restorations

CLEARFIL™ SE BOND 2 Kuraray Noritake Dental Inc.



*Refer to the table for light-curing time.

*Use an opaque resin (e.g. CLEARFIL ST OPAQUER) to mask metal color.

Flow Chart Sheet

CLEARFIL™
SE BOND 2
Dental Universal Self-Etch Adhesive

CE 0197



Kuraray Noritake Dental Inc.
1621 Sakazu, Kurashiki,
Okayama 710-0801, Japan

05/2013

001 1561R987R



INDICATIONS

- [1] Direct restorations using light-cured composite resin
- [2] Cavity sealing as a pretreatment for indirect restorations*
- [3] Treatment of exposed root surfaces*
- [4] Treatment of hypersensitive teeth*
- [5] Intraoral repairs of fractured restorations
- [6] Post cementation using a dual- or self-cured composite resin*
- [7] Core build-ups using a light-, dual- or self-cured core material*
- [8] Cementing inlays, onlays, crowns, bridges and veneers using a composite resin cement

CASE

Direct restorations

Intraoral repairs

Cementing

*Please refer to the IFU for [2], [3], [4], [6] and [7] of Indications.

Table: Dental curing unit and curing time

Type	Light source	Light Intensity	Light-curing time
Halogen	Halogen lamp	More than 400 mW/cm ²	10 seconds
LED	Blue LED*	800-1400 mW/cm ²	10 seconds
		More than 1500 mW/cm ²	5 seconds

The effective wavelength range of each dental curing unit must be 400-515 nm.
*Peak of emission spectrum: 450-480 nm

Cementing

inlays, onlays, crowns, bridges and veneers using a composite resin cement

CLEARFIL™ SE BOND 2 Kuraray Noritake Dental Inc.

CLEARFIL™ SE BOND 2 Kuraray Noritake Dental Inc.

Clean and dry the tooth surface, and then trial fit the prosthetic restoration

