

CLEARFIL™ SE BOND KIT
RESIN-BASED DENTAL ADHESIVE SYSTEM

Flow Chart Sheet



KURARAY MEDICAL INC.
1621 Sakazu, Kurashiki,
Okayama 710-0801, Japan

Case A Direct filling restorations

A



S1970E2-01

08/2007

CLEARFIL™ SE BOND KIT

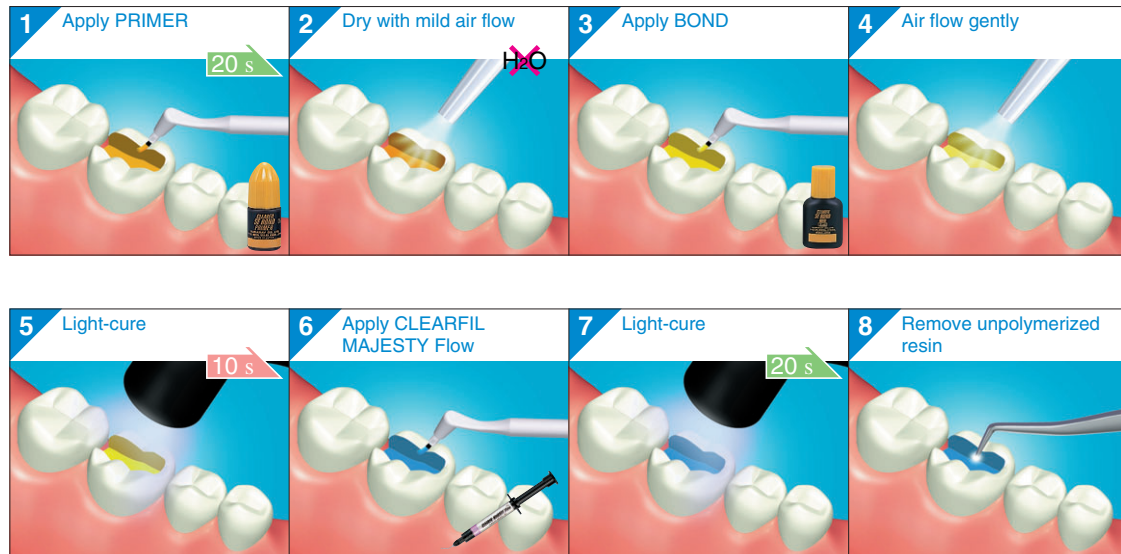
RESIN-BASED DENTAL ADHESIVE SYSTEM

Flow Chart Sheet



KURARAY MEDICAL INC.
1621 Sakazu, Kurashiki,
Okayama 710-0801, Japan

Case B Cavity sealing as a pretreatment for indirect restorations



CLEARFIL™ SE BOND KIT
RESIN-BASED DENTAL ADHESIVE SYSTEM

Flow Chart Sheet



KURARAY MEDICAL INC.
1621 Sakazu, Kurashiki,
Okayama 710-0801, Japan

Case C Treatment of hypersensitive and/or exposed root surfaces



CLEARFIL™ SE BOND KIT

RESIN-BASED DENTAL ADHESIVE SYSTEM

Flow Chart Sheet

Case D Intraoral repairs of fractured facing crowns made of porcelain, hybrid ceramics or composite resin using light-curing composite (1/2)



KURARAY MEDICAL INC.
1621 Sakazu, Kurashiki,
Okayama 710-0801, Japan



CLEARFIL™ SE BOND KIT

FOR MAJESTY™ VENEER SYSTEM

Flow Chart Sheet

Case D Intraoral repairs of fractured facing crowns made of porcelain, hybrid ceramics or composite resin using light-curing composite (2/2)



KURARAY MEDICAL INC.
1621 Sakazu, Kurashiki,
Okayama 710-0801, Japan

