

Preventive Care from 3M ESPE

3M™ ESPE™ Vanish™ XT Extended Contact Varnish is easy to use and does not require the use of a rubber dam.

To learn more about using Vanish XT Varnish for protecting enamel surfaces and for patients with orthodontic brackets, visit www.3MESPE.ca/preventivecare or contact 3M ESPE Customer Care Centre at 1-888-363-3685.

Vanish™ XT Extended Contact Varnish Exposed Root Surface Sensitivity Application



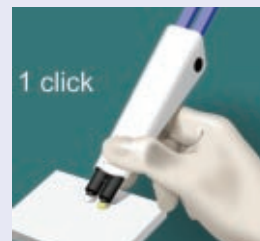
1. Clean the tooth surface



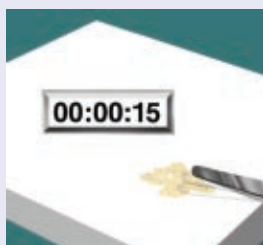
2. Rinse with water



3. Remove excess, pooled water



4. Dispense onto mixing pad



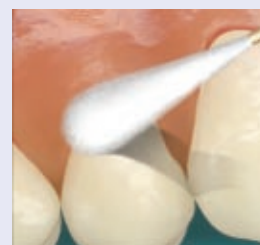
5. Mix for 15 seconds
(2.5 min. working time)



6. Apply thin layer to tooth surface



7. Light-cure for 20 seconds



8. Wipe the coating with a moist cotton applicator

Vanish™ XT Extended Contact Varnish



Item #	Product Information
12148	Vanish™ XT Extended Contact Varnish 1 - 10 g Clicker™ Dispenser

Customer Care Centre: 1-888-363-3685 www.3MESPE.com/CA

3M ESPE

Dental Products

3M Canada
Post Office Box 5757
London, Ontario N6A 4T1
Canada
1-888-363-3685
www.3MESPE.com/CA

3M Center
Building 275-2SE-03
St. Paul, MN 55144-1000
U.S.A.
1-800-634-2249

© 2008, 3M. All rights reserved. 3M, ESPE, Clicker and Vanish are trademarks of 3M or 3M ESPE AG. Used under license in Canada. All other trademarks referenced are the service marks, trademarks or registered trademarks of their respective companies. 0811-4128 E

Vanish™ XT

Extended Contact Varnish

Fast
Sensitivity
Relief

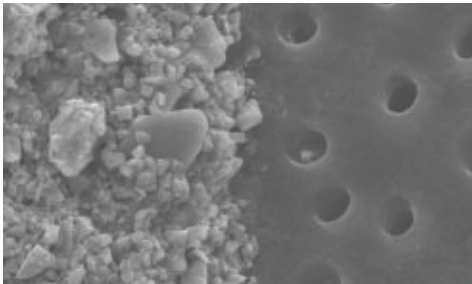


Slow Fluoride Release

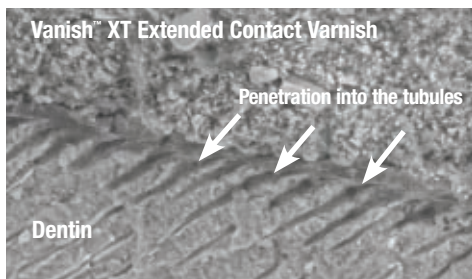


Introducing the protective barrier that immediately relieves sensitivity by blocking dentin tubules, delivers fluoride and lasts 6 months.

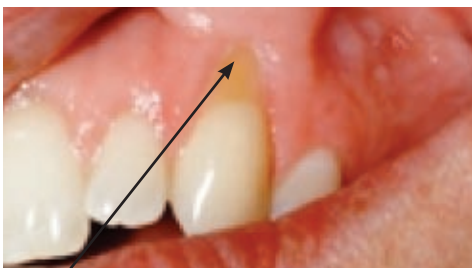
Vanish™ XT Extended Contact Varnish seals and protects dentin tubules.



SEM image of exposed dentin tubules (right) and Vanish™ XT Extended Contact Varnish (left) at 3000x magnification illustrates the barrier effect.



Cross-sectional SEM image of Vanish™ XT Extended Contact Varnish coated on dentin at 1000x magnification illustrates the resin tags penetrating the tubules.



Vanish™ XT Extended Contact Varnish is virtually invisible when applied to the tooth surface.

3M™ ESPE™ Vanish™ XT Extended Contact Varnish is a site-specific, light-cured durable coating that provides an immediate layer of protection to relieve dentinal hypersensitivity.

- Great for protecting exposed, sensitive root surfaces, especially newly cleaned surfaces following scaling and root planing
- Remains on the tooth for six months or longer
- Moisture tolerant: no need to dry or pre-treat the root surface
- Does not require the use of a rubber dam
- Delivers fluoride, calcium and phosphate

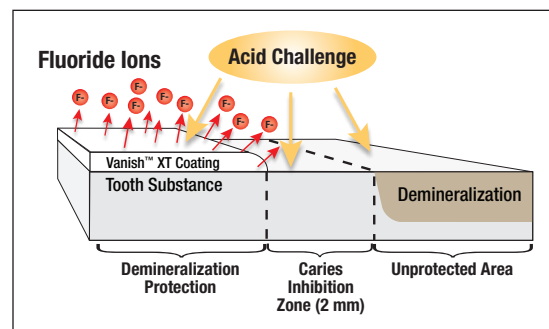
Vanish XT varnish reduces dentin permeability by 88%¹

Occluding dentinal tubules in-office provides immediate relief from pain associated with the movement of fluid through open tubules. In addition to creating a protective layer on exposed dentin, Vanish XT varnish has been shown to both penetrate and seal tubules. Laboratory testing demonstrates that Vanish XT varnish reduces dentin permeability by 88%.

Vanish XT varnish protects the tooth surface from acid attack

In-vitro tests conducted with Vanish XT demonstrate that the coating:

- Creates a barrier against demineralization and acid erosion²
- Provides protection beyond the coating²
- Helps repair demineralized enamel adjacent to the coating³

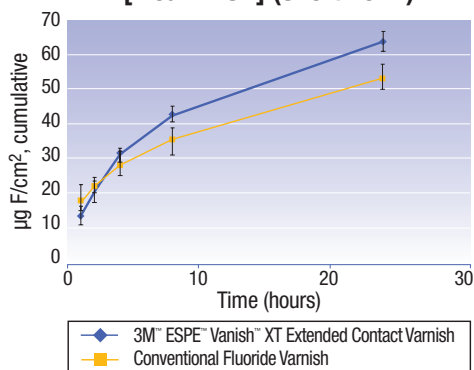


1. Rusin et al., Dentin Permeability of a New Protective Coating Material. J. Dent. Res. 87 (Spec. Iss. A): #1041, 2008.
2. Rusin et al., Demineralization Protection of a New Protective Coating. J. Dent. Res. 87 (Spec. Iss. B): #627, 2008.
3. 3M ESPE internal data.



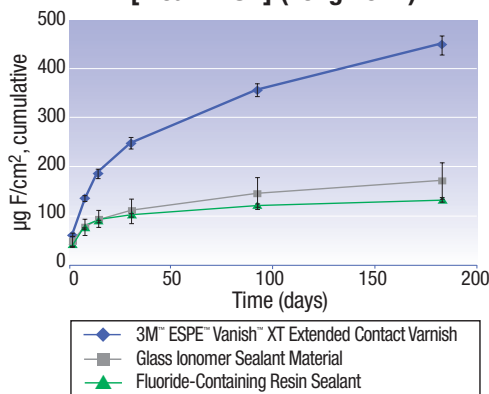
Long-Term Protection

Cumulative Fluoride Release [Mean ± SD] (Short-Term)



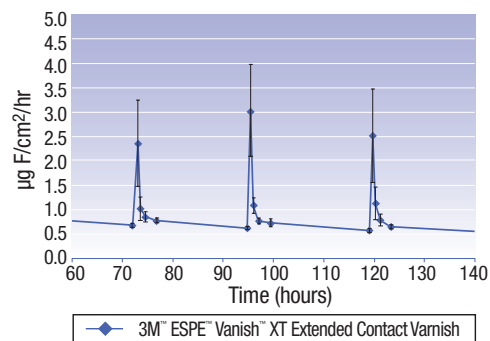
In-vitro testing shows Vanish™ XT Extended Contact Varnish releases more fluoride over 24 hours than a conventional varnish.

Cumulative Fluoride Release [Mean ± SD] (Long-Term)



In-vitro testing shows Vanish™ XT Extended Contact Varnish releases more fluoride over 6 months than other coatings.

Fluoride Recharge and Release



In-vitro testing shows Vanish™ XT Extended Contact Varnish is recharged by brushing with fluoride toothpaste.

Source: 3M ESPE internal data

Vanish XT varnish contains fluoride and is “recharged” by fluoride toothpaste.

Vanish XT varnish is a resin-modified glass ionomer material that releases fluoride, calcium and phosphate. This makes it unique versus other in-office desensitizers. In the first 24 hours, Vanish XT varnish releases more fluoride than a conventional fluoride varnish. Plus, Vanish XT varnish is recharged every time the patient brushes with fluoride toothpaste. Your patients not only get the protection of a physical barrier, they get the benefit of long-term fluoride delivery.

The Complete Solution – Check out the differences.

Existing dentinal hypersensitivity relief products offer multiple benefits, but no other product offers all the advantages of Vanish™ XT Extended Contact Varnish.

	Immediate Sensitivity Relief	Long-Term Coating	Moisture Tolerant	Fluoride Release	Calcium Release
Vanish™ XT Extended Contact Varnish	✓	✓	✓	✓	✓
Glutaraldehyde-based Desensitizers (e.g. Gluma®, Calm-it®)	✓	✓			
Resin-based Desensitizers (e.g. Seal & Protect®)	✓	✓			
Conventional Fluoride Varnishes (e.g. Duraphat®)	✓		✓	✓	

