



THE ONLY COMPOSITE TEMPLATE SYSTEM
TECHNIQUE GUIDES



Uveneer[®] is distributed exclusively by Ultradent

800.552.5512 ULTRADENT.COM

ULTRADENT
PRODUCTS, INC.



Uveneer[™]
dental art made simple

Direct Composite Technique Guide

Scan for more
product info
ultradent.com



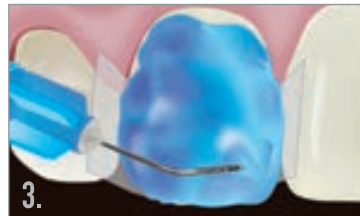
START



1.
Select the template that corresponds with the tooth being restored. See handle of template for corresponding tooth position, size, and arch. Choose preferred composite shade(s).



2.
Remove all caries if needed and minimally prepare the tooth.



3.
Place interproximal separating matrices and apply Ultra-Etch[™], Peak[™] SE Primer, or preferred etchant.



4.
Rinse etchant and air dry according to manufacturer's instructions. Do not rinse if using Peak SE Primer; air thin.



5.
Apply Peak[™] Universal Bond or preferred adhesive to tooth surface.



6.
Light cure with VALO[™] curing light 10 seconds on Standard Power. If using other curing light, cure according to manufacturer instructions.



7.
Apply preferred composite directly onto tooth. Do not light cure composite.



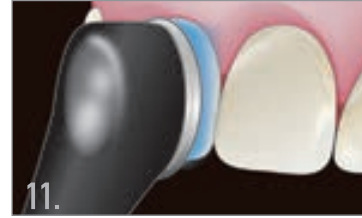
8.
Place selected template over uncured composite. Align centerline of template parallel to the midline of the face and perpendicular to the incisal plane. Using thumb, press the concave side of the template onto the tooth. Press firmly to remove any trapped air.



9. Remove any excess uncured composite from the periphery.



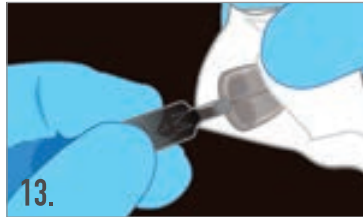
10. Using VALO™ curing light, cure composite through template. For every 2 mm layer, cure 10 seconds on Standard Power, 4 seconds on High Power, or 3 seconds on Xtra Power. If using other curing light, cure according to manufacturer's instructions.



11. Remove the Uvener® template by gently lifting the handle. Final cure composite directly with the VALO curing light. Cure 5 seconds on Standard Power, 4 seconds on High Power, or 3 seconds on Xtra Power. If using other curing light, cure according to manufacturer's instructions.



12. Avoiding the glossy facial surface, trim bulk of cured composite from periphery with a fine flame-shaped bur from the Jiffy™ Composite Finishing Bur Kit. Use a blade for anything next to the margin to avoid altering the margin of the permanent restoration. Use Jiffy Composite Polishers, Brushes, Diamond Strips, or Proximal Saws for minimal finishing and adjusting if desired.



13. Immediately after use, thoroughly wipe template with an alcohol pad and then dry, bag, and autoclave according to Uvener IFU. Do not leave any composite residue on the template in order to maintain translucency and shine.

FINISH



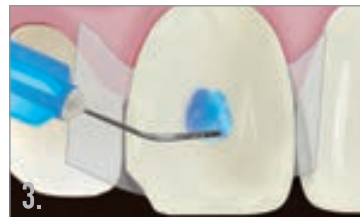
START



1. Select the template that corresponds with the tooth being restored. See handle of template for corresponding tooth position, size, and arch. Choose preferred composite shade(s).



2. Remove all caries if needed and minimally prepare the tooth.



3. Place interproximal separating matrices and spot etch with Ultra-Etch™, Peak™ SE Primer, or preferred etchant.



4. Rinse etchant and air dry according to manufacturer's instructions. Do not rinse if using Peak SE Primer; air thin.



5. Spot bond by applying a thin spot of Peak™ Universal Bond, ClearTemp™ LC, or preferred adhesive to the middle of the tooth surface.



6. Light cure with VALO™ curing light 10 seconds on Standard Power. If using other curing light, cure according to manufacturer instructions.



7. Apply preferred composite directly onto tooth. Do not light cure composite.



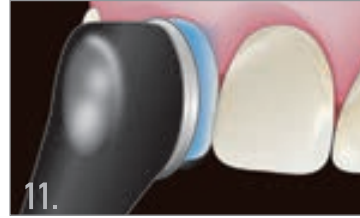
8. Place selected template over uncured composite. Align centerline of template parallel to the midline of the face and perpendicular to the incisal plane. Using thumb, press the concave side of the template onto the tooth. Press firmly to remove any trapped air.



9. Remove any excess uncured composite from the periphery.



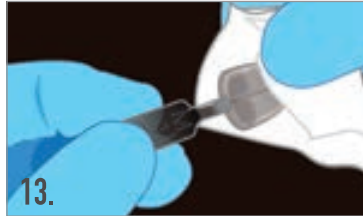
10. Using VALO™ curing light, cure composite through template. For every 2 mm layer, cure 10 seconds on Standard Power, 4 seconds on High Power, or 3 seconds on Xtra Power. If using other curing light, cure according to manufacturer's instructions.



11. Remove the Uvener® template by gently lifting the handle. Final cure composite directly with the VALO curing light. Cure 5 seconds on Standard Power, 4 seconds on High Power, or 3 seconds on Xtra Power. If using other curing light, cure according to manufacturer's instructions.



12. Avoiding the glossy facial surface and margin, trim bulk of cured composite from periphery with a fine flame-shaped bur from the Jiffy™ Composite Finishing Bur Kit. Use a blade for anything next to the margin to avoid altering the margin for the permanent restoration. Use Jiffy Composite Polishers, Brushes, Diamond Strips, or Proximal Saws for minimal finishing and adjusting if desired.



13. Immediately after use, thoroughly wipe template with an alcohol pad and then dry, bag, and autoclave according to Uvener IFU. Do not leave any composite residue on the template in order to maintain translucency and shine.

FINISH



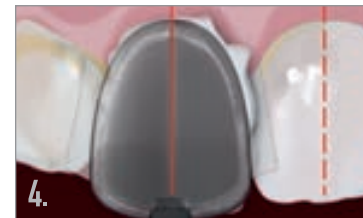
1. Select the template that corresponds with the tooth being restored. See handle of template for corresponding tooth position, size, and arch. Choose preferred composite shade(s).



2. Place interproximal separating matrices. If you choose to, you can apply a separating medium such as DeOx™ barrier solution to tooth for easier removal of the cured composite veneer.



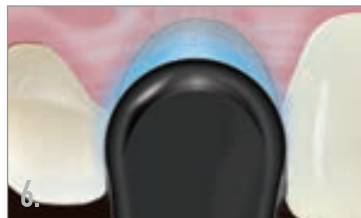
3. Apply preferred composite directly onto the tooth. Do not light cure composite.



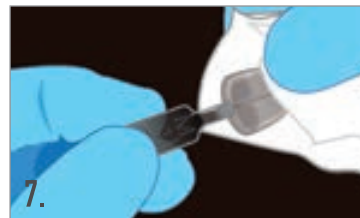
4. Place selected template over uncured composite. Align centerline of template parallel to the midline of the face and perpendicular to the incisal plane. Using thumb, press the concave side of the template onto the tooth. Press firmly to remove any trapped air.



5. Remove any excess uncured composite from the periphery.



6. Using VALO™ curing light, cure composite through template. For every 2 mm layer, cure 10 seconds on Standard Power, 4 seconds on High Power, or 3 seconds on Xtra Power. If using other curing light, cure according to manufacturer's instructions.



7. Immediately after use, thoroughly wipe template with an alcohol pad and then dry, bag, and autoclave according to Uveneer IFU. Do not leave any composite residue on the template in order to maintain translucency and shine.





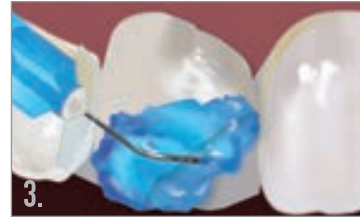
START



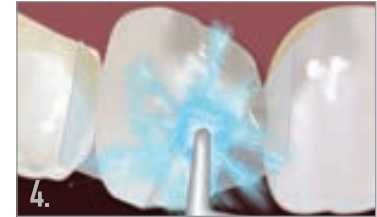
1. Select the template that corresponds with the tooth being restored. See handle of template for corresponding tooth position, size, and arch. Choose preferred composite shade(s).



2. Conservatively prepare the tooth if needed.



3. Place interproximal separating matrices and apply Ultra-Etch™, Peak™ SE Primer, or preferred etchant.



4. Rinse etchant and air dry according to manufacturer's instructions. Do not rinse if using Peak SE Primer; air thin.



5. Apply Peak™ Universal Bond or preferred adhesive to tooth surface. Air thin.



6. Light cure with VALO™ curing light 10 seconds on Standard Power. If using other curing light, cure according to manufacturer instructions.



7. Apply preferred composite directly onto tooth. Fill the broken part of the tooth with composite. Do not light cure composite.



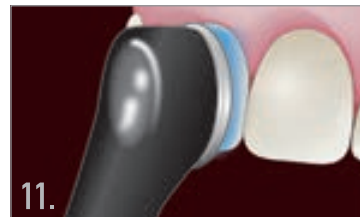
8. Place selected template over uncured composite. Align centerline of template parallel to the midline of the face and perpendicular to the incisal plane. Using thumb, press the concave side of the selected template onto the tooth.



9. Remove any excess uncured composite from the periphery.



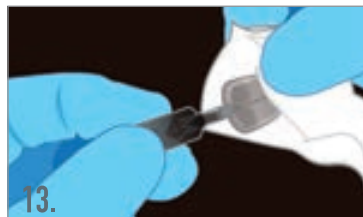
10. Using VALO™ curing light, cure composite through template. For every 2 mm layer, cure 10 seconds on Standard Power, 4 seconds on High Power, or 3 seconds on Xtra Power. If using other curing light, cure according to manufacturer's instructions.



11. Remove the Uvener® template by gently lifting the handle. Final cure composite directly with the VALO curing light. Cure 5 seconds on Standard Power, 4 seconds on High Power, or 3 seconds on Xtra Power. If using other curing light, cure according to manufacturer's instructions.



12. Avoiding the glossy facial surface, trim excess cured composite from periphery with a fine flame-shaped bur from the Jiffy™ Composite Finishing Bur Kit. Use Jiffy Composite Polishers, Brushes, Diamond Strips, or Proximal Saws for minimal finishing and adjusting if desired.



13. Immediately after use, thoroughly wipe template with an alcohol pad and then dry, bag, and autoclave according to Uvener IFU. Do not leave any composite residue on the template in order to maintain translucency and shine.

FINISH



START



1. Select the template that corresponds with the tooth being restored. See handle of template for corresponding tooth position, size, and arch. Choose preferred composite shade(s).



2. Conservatively prepare the tooth.



3. Place interproximal separating matrices and apply Ultra-Etch™, Peak™ SE Primer, or preferred etchant.



4. Rinse etchant and air dry according to manufacturer's instructions. Do not rinse if using Peak SE Primer; air thin.



5. Apply Peak™ Universal Bond or preferred adhesive to tooth surface. Air thin.



6. Light cure with VALO™ curing light 10 seconds on Standard Power. If using other curing light, cure according to manufacturer instructions.



7. Apply preferred composite directly onto tooth. Fill the broken part of the tooth with composite.



8. Place selected template over uncured composite. Align centerline of template parallel to the midline of the face and perpendicular to the incisal plane. Using thumb, press the concave side of the template onto the tooth. Press firmly to remove any trapped air.



9. Remove any excess uncured composite from the periphery.



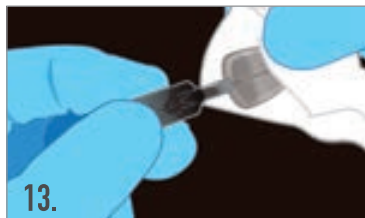
10. Using VALO™ curing light, cure composite through template. For every 2 mm layer, cure 10 seconds on Standard Power, 4 seconds on High Power, or 3 seconds on Xtra Power. If using other curing light, cure according to manufacturer's instructions.



11. Remove the Uvener® template by gently lifting the handle. Final cure composite directly with the VALO curing light. Cure 5 seconds on Standard Power, 4 seconds on High Power, or 3 seconds on Xtra Power. If using other curing light, cure according to manufacturer's instructions.



12. Avoiding the glossy facial surface, trim excess cured composite from periphery with a fine flame-shaped bur from the Jiffy™ Composite Finishing Bur Kit. Use Jiffy Composite Polishers, Brushes, Diamond Strips, or Proximal Saws for minimal finishing and adjusting if desired.



13. Immediately after use, thoroughly wipe template with an alcohol pad and then dry, bag, and autoclave according to Uvener IFU. Do not leave any composite residue on the template in order to maintain translucency and shine.

FINISH



START



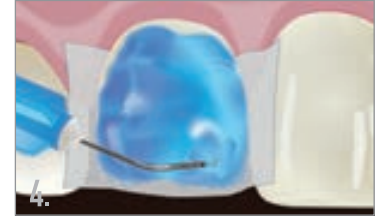
1. Select the template that corresponds with the tooth being restored. See handle of template for corresponding tooth position, size, and arch. Choose preferred composite shade(s).



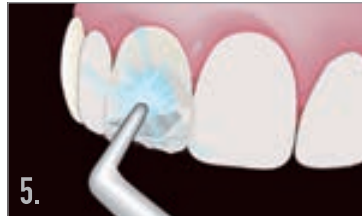
2. Use diamond bur to roughen broken ceramic and metal surfaces.



3. Apply Porcelain Etch etchant onto the broken surface. Etch for 90 seconds.



4. Apply Ultra-Etch™ etchant for 5 seconds to remove salts from etching the porcelain.



5. Rinse and thoroughly air dry broken metal and porcelain surface.



6. Apply Silane onto the broken porcelain surface with a Black Mini™ Brush Tip. Let evaporate for 1 minute, then blow with a gentle stream of air until completely dry.



7. Apply Peak™ Universal Bond adhesive onto metal and ceramic surface with an Inspirall™ Brush tip. Air thin gently but thoroughly.



8. Light cure for 10 seconds with VALO™ curing light. If using other curing light, cure according to manufacturer instructions.



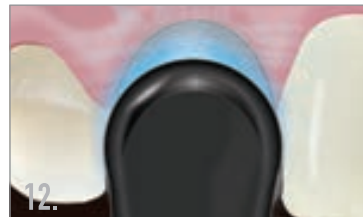
9. Apply a block out over metal, light cure, then apply preferred composite directly onto tooth. Do not light cure composite.



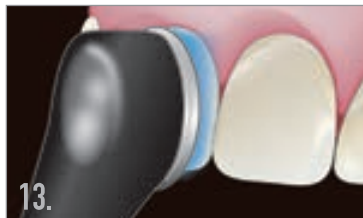
10. Place selected template over uncured composite. Align centerline of template parallel to the midline of the face and perpendicular to the incisal plane. Using thumb, press the concave side of the template onto the tooth. Press firmly to remove any trapped air.



11. Remove any excess uncured composite from the periphery.



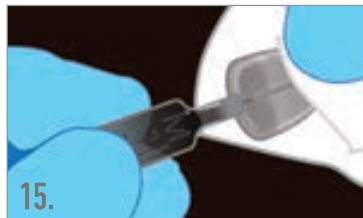
12. Cure composite through template with the VALO™ curing light. For every 2 mm layer, cure 10 seconds on Standard Power, 4 seconds on High Power, or 3 seconds on Xtra Power. If using other curing light, cure according to manufacturer's instructions.



13. Remove the Uveneer® template by gently lifting the handle. Final cure composite directly with the VALO curing light. Cure 5 seconds on Standard Power, 4 seconds on High Power, or 3 seconds on Xtra Power. If using other curing light, cure according to manufacturer's instructions.



14. Avoiding the glossy facial surface, trim excess cured composite from periphery with a fine flame-shaped bur from the Jiffy™ Composite Finishing Bur Kit. Use Jiffy Composite Polishers, Brushes, Diamond Strips, or Proximal Saws for minimal finishing and adjusting if desired.



15. Immediately after use, thoroughly wipe template with an alcohol pad and then dry, bag, and autoclave according to Uveneer IFU. Do not leave any composite residue on the template in order to maintain translucency and shine.

FINISH

800.552.5512 **ULTRADENT.COM**

© 2019 Ultradent Products, Inc. All Rights Reserved. 1003858.7 072619

 **ULTRADENT**
PRODUCTS, INC.

Improving Oral Health Globally