

# Tissue Goo™

Hemostatic Gel

## BIG SHOT

INSTRUCTIONS FOR  
TISSUE GOO REFILLING



Now you can refill your Tissue Goo 3mL syringes in just seconds, with no mess! You can expect to get approximately 20 refills from every Tissue Goo Big Shot 60mL syringe.



Remove the shipping caps from both the Big Shot 60mL syringe and the empty Tissue Goo 3mL syringe.



Attach the empty 3mL syringe to the Big Shot 60mL syringe and firmly rotate until fully engaged.

### TWO REFILLING OPTIONS



#### TABLETOP REFILLING

1. Hold the Big Shot (with empty, 3mL syringe attached) vertically on a tabletop.
2. Initiate the plunger of the 3mL syringe (nudge upwards) with your thumb, and apply slight pressure to the Big Shot syringe, in a downward motion.
3. Tissue Goo 3mL syringe plunger will tilt sideways slightly when full. Alternatively, watch the internal black "o" ring as it approaches the top of the syringe barrel.
4. Replace Tissue Goo Big Shot cap for storage.



#### ALTERNATE METHOD

Initiate the plunger of the 3mL syringe with your thumb. While using only slight pressure, push the end of the Big Shot syringe until the 3mL syringe is completely refilled.

#### Important Notes: ALWAYS REFILL SYRINGES SLOWLY!

It is important to replace all manufacturer's shipping caps when you have completed refilling your Tissue Goo 3mL syringe. Failure to do so will result in potential leakage and dehydration of Tissue Goo.

 Clinician's Choice

**Tissue Goo™**  
Hemostatic Gel

 Clinician's Choice

Manufactured for: Clinician's Choice Dental Products, Inc  
167 Central Ave., London, ON Canada N6A 1M6  
U.S. Distribution: Brookfield, CT, USA 06804  
1.800.265.3444 • 519.641.3066 [clinicianschoice.com](http://clinicianschoice.com)

**Rx** only

1.800.265.3444  
[www.clinicianschoice.com](http://www.clinicianschoice.com)

# Tissue Goo™

## Hemostatic Gel

### FOR PROFESSIONAL USE ONLY

Tissue Goo is a berry flavoured hemostatic gel containing 25% aluminum sulfate. NPN02245631

### INDICATIONS FOR USE:

For the purpose of aiding in gingival retraction and to control bleeding, as well as to reduce the mucus membrane inflammation associated with dental impression procedures, and Class V restorations or other tissue management problems in other phases of dentistry. This product is for topical use only. Tissue Goo is compatible with any type of impregnated cord or plain cord.

### CONTRAINDICATIONS:

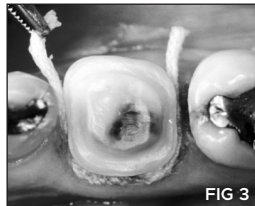
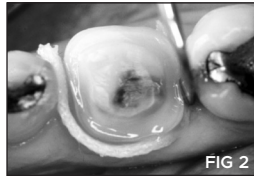
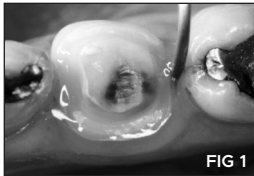
None.

### GINGIVAL RETRACTION PROCEDURES OR CROWN AND BRIDGE PROCEDURES:

1. Remove the cap from the 3mL syringe and twist on a needle tip.
2. If bleeding is excessive following tooth preparation, syringe Tissue Goo to the bleeding site. Apply pressure (do not rub!) to the site with a Multi-Brush or a small cotton pellet until the bleeding is arrested. Rinse the prepared tooth.
3. Apply Tissue Goo around the gingival margin of the entire preparation (Fig 1).
4. Pack retraction cord through the syringed Tissue Goo (Fig 2). Either a single or double cord technique can be used. If bleeding occurs, the site should be rinsed and dried. Additional Tissue Goo is then placed over the packed retraction cord. Allow sufficient time for the tissues to retract (2-6 mins).

5. If still bleeding, rinse, dry, and re-apply Tissue Goo gel. Wait 2-6 mins.
6. Remove cord. Rinse and dry (Fig 3).
7. Take impression as usual.

**Note:** Clinician's Choice recommends the use of a double cord pack technique. Place a smaller cord first, followed by a larger size. The small cord can be left in during the impression and then removed.



### SAFETY DATA SHEET

#### 1. IDENTIFICATION OF THE MATERIAL AND SUPPLIER

Product Name: Tissue Goo Hemostatic Gel  
Product Use: Topical hemostatic gel  
Manufacturer Name:

Clinician's Choice Dental Products, Inc  
167 Central Avenue, London, ON,  
Canada, N6A 1M6

For US Distribution: Brookfield, CT, USA, 06804  
1-800-265-3444  
(519) 641-3066  
info@clinchianschoice.com

#### 2. HAZARDS IDENTIFICATION

GHS Classification & Label Elements:

HEALTH HAZARD

Mild Eye Irritant: Category 2B

Label Elements: No symbol

Signal Word: Warning

HAZARD STATEMENTS

H320 Causes eye irritation

PREVENTION STATEMENTS

P264 Wash thoroughly after handling

P280 Wear protective gloves/ protective

clothing/eye protection

RESPONSE PRECAUTIONARY STATEMENTS:

P305 + P351 + P338 IF IN EYES:

Rinse cautiously with water for several minutes.

Remove contact lenses, if present and easy to

do. Continue rinsing.

#### 3. COMPOSITION/INFORMATION ON INGREDIENTS

CHEMICAL ENTITY (Components)	CAS NO.	PROPORTION
Aluminum Sulfate, USP	10043-01-3	25%
Amorphous Silica	7631-86-9	4%
Glycerin	56-81-5	35%
Tris (2-hydroxyethyl)amine	102-71-6	5%
Color		1%
Flavor		2%
Water		28%

#### 4. FIRST AID MEASURES

Inhalation: N/A

Ingestion: Induce vomiting. Seek medical assistance.

Skin: Flush well with water for at least 15 minutes.

Eye: Flush well with water for at least 15 minutes.

First Aid Facilities: Seek Medical assistance for further treatment, observation and support if necessary.

#### 5. FIRE FIGHTING MEASURES

Extinguishing Media: Suitable extinguishing media for the surrounding fire should be used.

Specific Hazards: None

Precautions in connection with fire: Use of self-contained breathing apparatus is recommended. Wear protective clothing to prevent contact with skin and eyes.

#### 6. ACCIDENTAL RELEASE MEASURES

Emergency Procedures: Keep personnel away from area. Contain spills.

Clean Up Procedure: Clean area with soapy water.

#### 7. HANDLING AND STORAGE

Handling: Use original container.

Storage: Store in cool, well-ventilated area.

#### 8. EXPOSURE CONTROLS/PERSONAL PROTECTION

Exposure Limits: Not determined

Respiratory Protection: N/A

Eye Protection: Safety glasses/goggles

Hand Protection: Protective gloves

Engineering controls: Standard room ventilation

#### 9. PHYSICAL AND CHEMICAL PROPERTIES

Appearance: Green gel

Odor: Gooseberry

pH: 3.0 to 4.0

Vapor Pressure: Not determined

Vapor Density: Not determined

Boiling Point: Not determined

Freezing / Melting Point: Not determined

Solubility in Water: Aluminum sulfate is highly soluble in water.

Specific Gravity: Not determined

Flash Point: Not determined

Flammability: N/A

#### 10. STABILITY AND REACTIVITY

Chemical Stability: Stable under ordinary conditions of use and storage

Conditions to Avoid: High Heat

Incompatible Materials: None known

Hazardous Decomposition Products: None known

Hazardous Reactions: None known

#### 11. TOXICOLOGICAL INFORMATION

Hazardous Ingredient: Aluminum

Sulfate Mixture

LD50 (orally) MICE: 24000 mg/kg

Routes of Exposure: Refer to Section 4 of SDS

#### 12. ECOLOGICAL INFORMATION

Ecotoxicity: No known effects

Persistence and Degradability:

No information found

#### 13. DISPOSAL CONSIDERATIONS

Disposal Method and Containers:

Empty containers may be disposed of in waste containers.

Special Precaution: Disposal should be carried out in compliance with federal, state, and local regulations.

#### 14. TRANSPORT INFORMATION

Not a dangerous good. Not regulated

Hazchem code: None allocated

#### 15. REGULATORY INFORMATION

Precautionary Phrases: For professional

in-office use only.

Keep out of reach of children.

Poison Schedule: None allocated

AICS (Australia): All ingredients are listed

Note: Refer to applicable international, national, and local regulations and provisions.

#### 16. OTHER INFORMATION

Legal Disclaimer: Information contained in this SDS is based on data believed to be correct. This information does not purport to be all inclusive and shall be used only as a guide. No warranty is expressed or implied regarding the accuracy of this data or the results to be obtained from the use thereof. In no event will the manufacturer or the distributor be responsible for damages of any nature whatsoever resulting from the use of or reliance upon this information.

#### SDS History

Date of Issue: May 28, 2015

Replaces Issue: June 15, 2014

Changes made to previous issue: Added GHS classification, pictogram information, hazard & precautionary statements