

TISSUE GOO™

HEMOSTATIC GEL

Tissue Management: Placing Retraction Cord & Controlling Bleeding

Unlike runny liquid hemostatic agents, TISSUE GOO™ is a gel that stays where you place it, offering exceptional hemostasis without compromising the health of the gingival tissue.

TISSUE GOO's active ingredient is 25% aluminum sulfate, which will control bleeding throughout the cord placement and tissue management processes. Aluminum sulfate is much kinder to soft tissue than other hemostatic agents; it does not cauterize, but rather acts similar to a coagulant to stop the bleeding, ensuring your patient's tissue will not turn black. During retraction cord placement, TISSUE GOO acts as a lubricant. Place TISSUE GOO around the sulcus, then pack FIRST STRING™ Retraction Cord through the goo. FIRST STRING will provide ideal tissue displacement, while absorbing the goo and delivering the hemostatic agent into the sulcus.

TISSUE GOO is especially effective during veneer cementation where minor bleeding, caused by veneer insertion, often occurs. TISSUE GOO stops this type of bleeding without contaminating the marginal bonding surface or discoloring the soft tissue, both problems commonly experienced with aluminum chloride and ferric sulfate hemostatic agents.

TISSUE GOO will not interfere with the set of your impression material. And it's gooseberry-flavored, so your patients will love the taste.

The TISSUE GOO Big Shot is a 60ml refill syringe designed to allow you to refill your TISSUE GOO 3ml syringes in just seconds with no mess. You can expect to get approximately 20 refills out of every Big Shot syringe.

WHEN IT BLEEDS, BE A BIG SHOT, AND JUST GOO IT!

TISSUE GOO Big Shot!

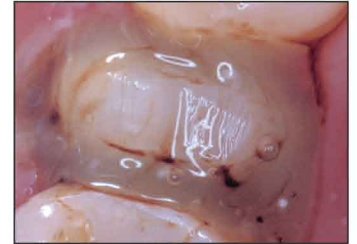
Easy, economical, and environmentally friendly! This 60ml syringe of TISSUE GOO is packaged with four empty 3ml syringes for filling and refilling and refilling and refilling...!



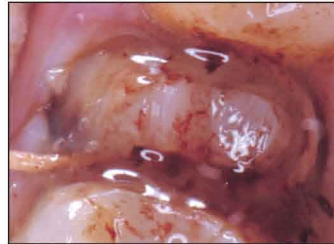
Gingival Retraction for Crown and Bridge Procedures



1. If bleeding is excessive following tooth preparation, syringe Tissue Goo to the bleeding site. Apply pressure (do not rub!) to the site with a Multi-Brush or a small cotton pellet until the bleeding is arrested. Rinse the prepared tooth.



2. Apply Tissue Goo around the gingival margin of the entire preparation.



3. Pack First String Retraction Cord through the syringed Tissue Goo using either a single or double cord technique. If bleeding occurs, rinse and dry the site, then place additional Tissue Goo over the packed retraction cord.



4. Hemostasis is achieved without damage to the soft tissue.

Dentistry and photography courtesy of Dr. Robert Margolis

241904 **TISSUE GOO 4-pack**
4-3ml syringes TISSUE GOO, 50-20 gauge needle tips, instructions, MSDS.

241960 **TISSUE GOO Big Shot**
1-60ml syringe TISSUE GOO, 4-3ml empty refillable syringes, instructions, MSDS.

972403 **TISSUE GOO/DETAIL Trial Pack**
2-3ml syringes TISSUE GOO, 2-3ml syringes DETAIL, needle tips, instructions, MSDS.



CLINICIAN'S CHOICE®
DENTAL PRODUCTS INC.

designed for better dentistry

BACKED BY OUR TRY-IT GUARANTEE

We guarantee you'll love Tissue Goo, or return it within 30 days for a full refund!



1-800-265-3444
www.clinicianschoice.com