

RIBBOND® SEMI-RIGID TRAUMA SPLINT

Standard Criteria for Trauma Stabilization

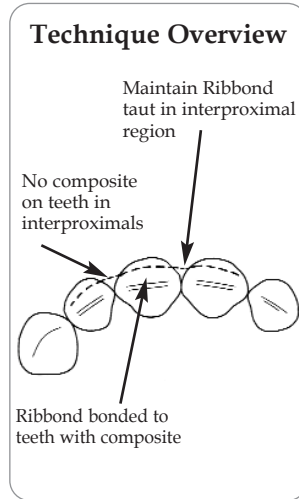
- Should allow for semi-rigid fixation of the teeth
- Should not move teeth during healing
- Splint should maintain oral hygiene and not impinge on the gingiva

How Ribbond Splint Meets Criteria

- Allows for semi-rigid fixation
- Has no memory - does not move teeth
- Is easy to keep clean
- Is placed at the level of interproximal contacts

Advantages of Ribbond Over Wire for Trauma Treatment

- Ease of use
 - has no memory
 - passively adapts to teeth and dental arch
 - does not move teeth
 - chemically bonds to resin
 - can be shaped and adapted to the teeth until the composite is cured
- Esthetic
- Thin and Smooth
- Non-irritating to the injured lip



Technique

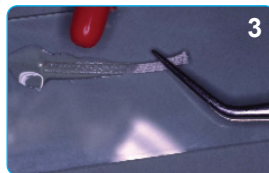
1. **Reposition the avulsed or luxated tooth.** Gently reposition the avulsed or luxated tooth (Figure 1).



2. **Measure and cut the amount of Ribbond needed.** Measure the length of Ribbond needed with dental floss (Figure 2). The Ribbond should extend to ¾ of the distance across the abutments at the level of interproximal contacts. Cut the Ribbond to the length of the dental floss template.



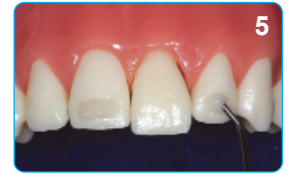
3. **Wet the Ribbond with bonding resin and blot off excess.** Wet the Ribbond with *Ribbond Wetting Resin*, an unfilled bonding adhesive or pit and fissure sealant (Figure 3). Blot off the excess with a lint free gauze or patient bib. The Ribbond may now be touched with powder free gloves or clean fingers.



4. **Acid etch and apply bonding resin.** Clean and etch the abutments and the traumatized teeth at the level of the interproximal contacts. Etch only enough surface area necessary for retention. Apply a bonding resin and cure. To insure semi-rigidity, do not etch or bond in the interproximal region (Figure 4).



5. **Apply composite on abutment teeth.** Apply *Ribbond Securing Composite* or a flowable composite on abutment teeth only. Do not place any composite at the interproximal contacts, and do not apply composite on the traumatized tooth (Figure 5).



6. **Adapt the Ribbond against the abutment teeth and cure.** Press the Ribbond through the composite on the abutment teeth. Maintain it taut in the interproximal region. Do not allow any composite in the interproximal region during placement of the Ribbond. (Figures 6 and 7) Cure.



7. **Reposition traumatized tooth and apply composite.** Reposition traumatized tooth with your finger, and hold it in position as you attach the Ribbond to the traumatized tooth with *Ribbond Securing Composite* or a flowable composite. Press the Ribbond closely against the tooth and cure. Be sure not to get composite in the interproximal region. (Figure 8)



8. **Completed trauma splint.** The finished splint is esthetic, thin, smooth, and non-irritating to the injured lip. (Figures 9 and 10)

