



**4801 - Mosaic Syringe Intro Kit**  
 1 x Each 4 g Mosaic A1, A2, A3, EN, and ET syringe  
 1 x Mosaic Shade Guide



**4802 - Mosaic Single Compules Intro Kit**  
 10 x Each 2 g Mosaic A1, A2, A3, EN, and ET compules  
 1 x Mosaic Shade Guide

**Mosaic™ Syringe 4 g**

Dentin	1pk	Enamel	1pk
A0.5	4760	Enamel Yellow	4773
A1	4761	Enamel Blush	4774
A2	4762	Enamel Gray	4775
A3	4763	Enamel Neutral	4776
A3.5	4764	Enamel White	4777
A4	4765	Enamel Trans	4779
A5	4766	Opaque	1pk
B0.5	4767	Opaque White	4778
B1	4768		
B2	4769		
C2	4770		
C3	4771		
D2	4772		



x 1

**Mosaic™ Single Compules 0.2 g**

Shade	10pk	Shade	10pk
A0.5	4799	Enamel Yellow	4792
A1	4780	Enamel Blush	4793
A2	4781	Enamel Gray	4794
A3	4782	Enamel Neutral	4795
A3.5	4783	Enamel White	4796
A4	4784	Enamel Trans	4798
A5	4785	Opaque	10pk
B0.5	4786	Opaque White	4797
B1	4787		
B2	4788		
C2	4789		
C3	4790		
D2	4791		



x 10

mosaic™

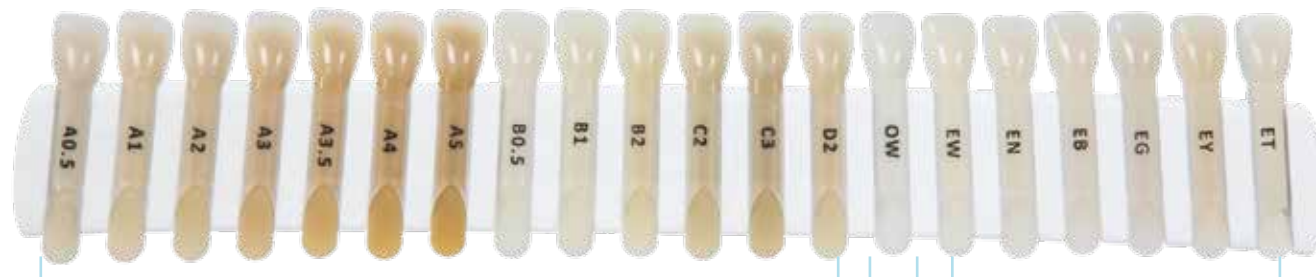
Universal Composite   
 A precise balance of handling, esthetics, and performance

**MOSAIC™ SHADE GUIDE**

The unique, composite-made layered shade guide makes it easy to visualize the final result. The thirteen dentin shades on the left feature a thin layer of Enamel Neutral over the coronal portion of each tab.



**4803 - Mosaic Shade Guide—20 shades**  
 A0.5, A1, A2, A3, A3.5, A4, A5, B0.5, B1, B2, C2, C3, D2, EY, EB, EG, EN, EW, OW, ET



13 DENTIN SHADES  
 Tapered Handle = Dentin Only  
 Tooth = Dentin + Enamel Neutral Layer

OPAQUE WHITE  
 Not Layered

6 ENAMEL SHADES  
 Not Layered



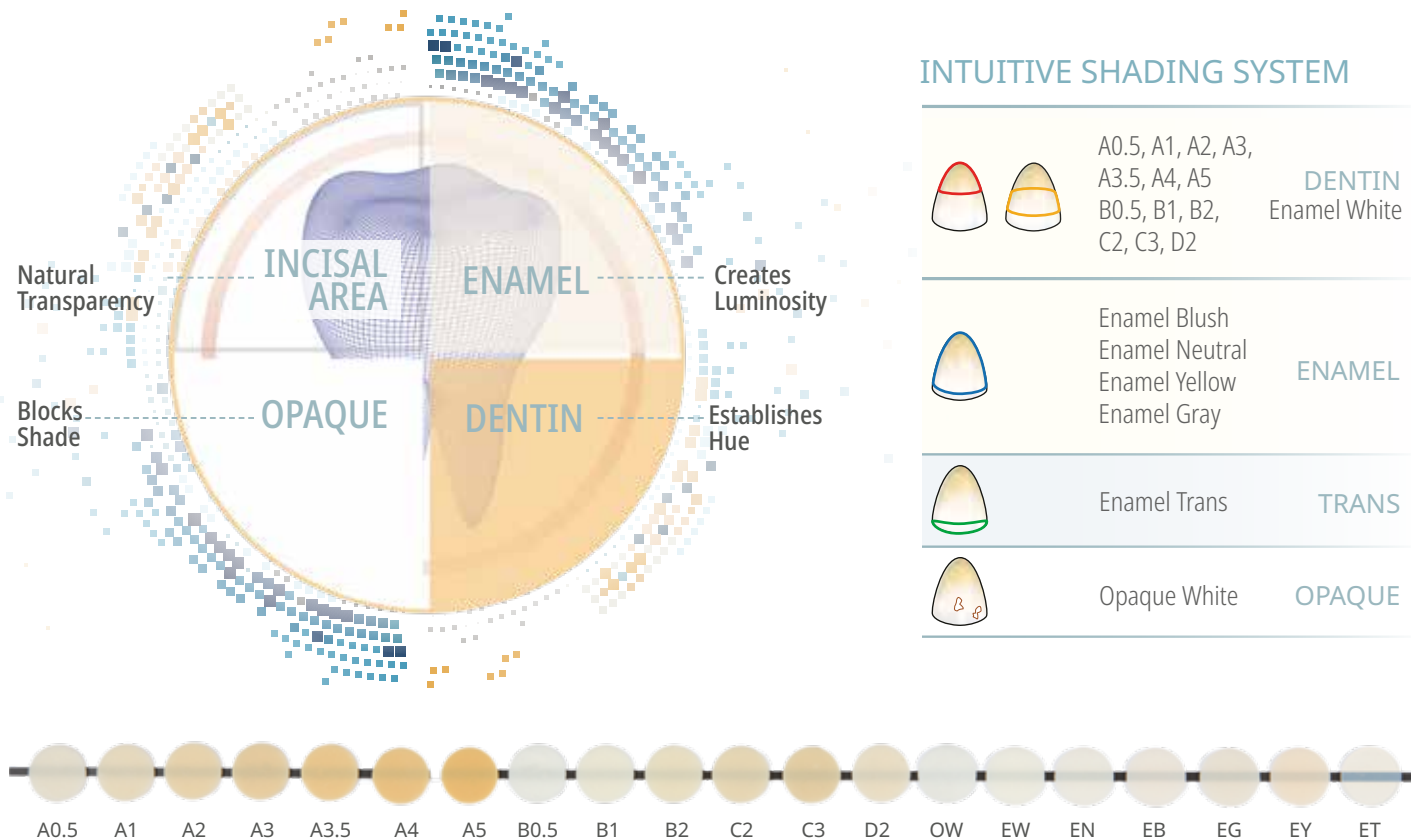


Mosaic universal composite can be used for all restorative purposes: basic or complex. Its well-balanced nanohybrid formula produces restorations of the highest quality.

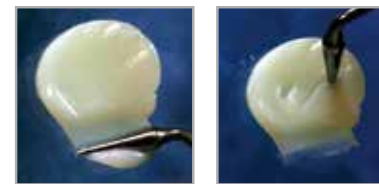
Choose between an innovative syringe or a classic unit dose delivery.



Twenty intuitive shade options produce predictable, natural results.



Highly sculptable handling properties provide total control during manipulation.



- Smooth, pliable consistency
- Cuts easily and doesn't stick to instruments
- Won't flow or slump out of place after being shaped
- Allows ample working time under ambient light

Universal application suits Class I-V restorations in both anterior and posterior regions.



Courtesy of Dr. Rafael Beolchi. Esthetic restoration using Mosaic composite shades: A4, A3, A2 and A1 from cervical to incisal. Enamel White and Opaque White on the incisal edge.



Courtesy of Dr. Gaetano Paolone. Class II restoration using the Peak™ Universal Bond adhesive system with Mosaic composite shades A5 and Enamel Neutral.

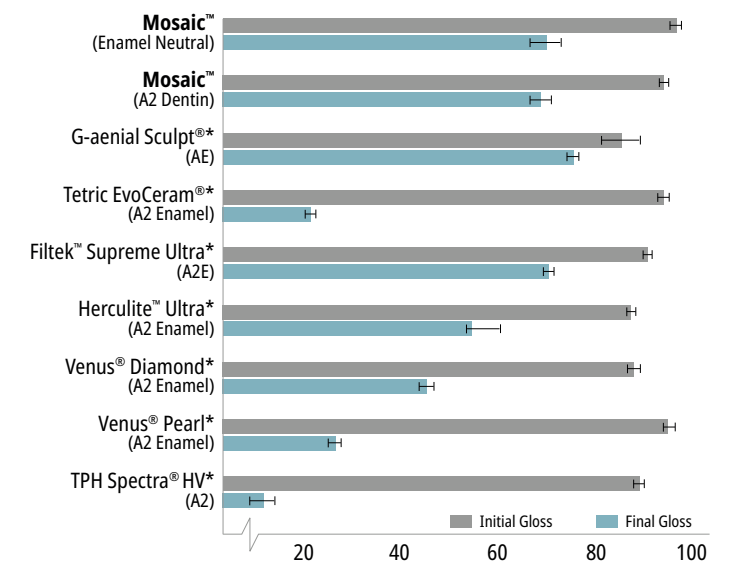
Balanced performance ensures both functional durability and esthetic longevity.

**TECHNICAL OVERVIEW<sup>1</sup>**

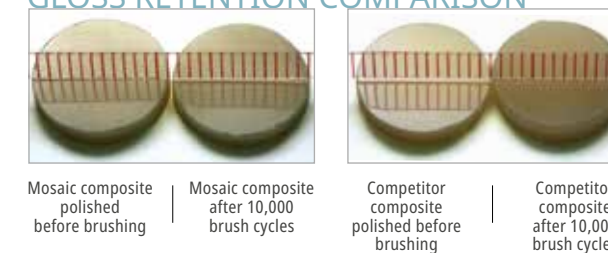
	DENTIN SHADES	ENAMEL SHADES
Shrinkage Volume	2.6%	3.7%
Shrinkage Stress	3.9 MPa	6.1 MPa
Compressive Strength	486.4 MPa	447.6 MPa
Hardness	66.9 HK	65.4 HK
Flexural Strength	166.1 MPa	176.7 MPa
Flexural Modulus	17.3 GPa	11.7 GPa
Water Sorption	≤40 µg/mm <sup>3</sup>	≤40 µg/mm <sup>3</sup>
Water Solubility	≤7.5 µg/mm <sup>3</sup>	≤7.5 µg/mm <sup>3</sup>
Radiopacity	≥2 mm Al (200%)	≥2 mm Al (200%)
Working Time (Ambient Light)	4:00 min	4:00 min
Depth of Cure	2 mm	2 mm
% Fill by Volume	68%	56%

Balanced performance ensures both functional durability as well as esthetic longevity.

**GLOSS RETENTION COMPARISON<sup>2</sup>**



**GLOSS RETENTION COMPARISON**



\* Trademark of a company other than Ultradent. 1. Data on file. 2. Data on file. Final gloss measured after 10,000 brush cycles in gloss units (GU).