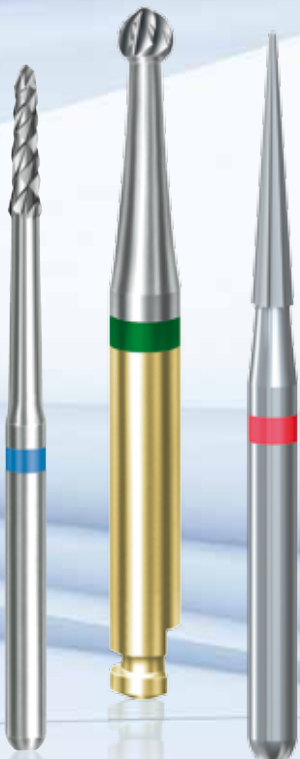




# Ordering guide | Tungsten carbide



*Some of the products and designations mentioned in the text are trademarked, patented or copyrighted.*

*The absence of a special reference or the sign © should not be interpreted as the absence of legal protection.*

*This publication is copyrighted. All rights, also with regard to translation, reprint and reproduction (also in the form of extracts) are reserved. No part of this publication may be reproduced or processed using electronic systems in any form or by any means (photocopying, microfilm or other methods) without the written permission of the editor.*

*Colours and products subject to alterations.  
Printing errors excepted.*

*As at March 2014*



**Shank types**

**204 RA**  
right angle Ø 2,35 mm

**205 RASL**  
right angle · surgical length Ø 2,35 mm

**206 RASXL**  
right angle · surgical X-length Ø 2,35 mm

**312 FGSTS**  
friction grip · extra short Ø 1,60 mm

**313 FGSS**  
friction grip · short shank Ø 1,60 mm

**314 FG**  
friction grip Ø 1,60 mm

**315 FGL**  
friction grip long Ø 1,60 mm

**316 FGSL**  
friction grip · surgical length Ø 1,60 mm

**317 FGSXXL**  
friction grip · surgical XX-length Ø 1,60 mm

**104 HP**  
handpiece Ø 2,35 mm

**105 HPSXL**  
handpiece · surgical X-length Ø 2,35 mm

**106 HPSXXL**  
handpiece · surgical XX-length Ø 2,35 mm

**234 HPSY**  
handpiece · Stryker J-Notch Ø 2,35 mm

**320 HPSL**  
handpiece · surgical length Ø 2,35 mm

**Maximum permissible speed**

- =  $\odot_{max}$  100 min<sup>-1</sup>/rpm
- =  $\odot_{max}$  500 min<sup>-1</sup>/rpm
- ▣ =  $\odot_{max}$  800 min<sup>-1</sup>/rpm
- =  $\odot_{max}$  1.000 min<sup>-1</sup>/rpm
- =  $\odot_{max}$  5.000 min<sup>-1</sup>/rpm
- ⊖ =  $\odot_{max}$  6.000 min<sup>-1</sup>/rpm
- ⊕ =  $\odot_{max}$  7.000 min<sup>-1</sup>/rpm
- ⊗ =  $\odot_{max}$  8.000 min<sup>-1</sup>/rpm
- =  $\odot_{max}$  10.000 min<sup>-1</sup>/rpm
- =  $\odot_{max}$  15.000 min<sup>-1</sup>/rpm

- ⊖ =  $\odot_{max}$  16.000 min<sup>-1</sup>/rpm
- ▲ =  $\odot_{max}$  20.000 min<sup>-1</sup>/rpm
- △ =  $\odot_{max}$  25.000 min<sup>-1</sup>/rpm
- ◆ =  $\odot_{max}$  30.000 min<sup>-1</sup>/rpm
- ◇ =  $\odot_{max}$  35.000 min<sup>-1</sup>/rpm
- ◇ =  $\odot_{max}$  40.000 min<sup>-1</sup>/rpm
- ◇ =  $\odot_{max}$  50.000 min<sup>-1</sup>/rpm
- ◇ =  $\odot_{max}$  60.000 min<sup>-1</sup>/rpm
- ◇ =  $\odot_{max}$  70.000 min<sup>-1</sup>/rpm
- ◇ =  $\odot_{max}$  80.000 min<sup>-1</sup>/rpm

- ◇ =  $\odot_{max}$  90.000 min<sup>-1</sup>/rpm
- =  $\odot_{max}$  100.000 min<sup>-1</sup>/rpm
- ▣ =  $\odot_{max}$  120.000 min<sup>-1</sup>/rpm
- ▣ =  $\odot_{max}$  140.000 min<sup>-1</sup>/rpm
- ▣ =  $\odot_{max}$  150.000 min<sup>-1</sup>/rpm
- ▣ =  $\odot_{max}$  160.000 min<sup>-1</sup>/rpm
- + =  $\odot_{max}$  300.000 min<sup>-1</sup>/rpm
- =  $\odot_{max}$  450.000 min<sup>-1</sup>/rpm
- if not indicated

**Operative  
Carbides**



- H1SM.RA.010** 2SM
- H1SM.RA.012** 3SM
- H1SM.RA.014** 4SM
- H1SM.RA.016** 5SM
- H1SM.RA.018** 6SM
- H1SM.RA.021** 7SM
- H1SM.RA.023** 8SM
- H1SM.RASL.010** 2SM
- H1SM.RASL.014** 4SM
- H1SM.RASL.018** 6SM
- H1SM.RASL.023** 8SM



- H1SE.RA.008** 1SE

- H1SE.RA.010** 2SE
- H1SE.RA.012** 3SE
- H1SE.RA.014** 4SE
- H1SE.RA.016** 5SE
- H1SE.RA.018** 6SE
- H1SE.RA.021** 7SE
- H1SE.RA.023** 8SE



- H1S.FG.010** 2S
- H1S.FG.012** 3S
- H1S.FG.014** 4S
- H1S.FG.016** 5S
- H1S.FG.018** 6S
- H1S.FG.021** 7S +
- H1S.FG.023** 8S +

# 100 Packs

... available for sizes

FG	FG	RA
1/4	4	2
1/2	6	4
1	8	6
2		8



- H1.FGSS.005** 1/4
- H1.FGSS.006** 1/2

- H1.FGSS.008** 1
- H1.FGSS.010** 2
- H1.FGSS.014** 4
- H1.FGSS.018** 6
- H1.FGSS.023** 8 +
- H1.FG.003** 1/16
- H1.FG.004** 1/8
- H1.FG.005** 1/4
- H1.FG.006** 1/2
- H1.FG.007** 3/4
- H1.FG.008** 1
- H1.FG.009** 1 1/2
- H1.FG.010** 2
- H1.FG.012** 3
- H1.FG.014** 4
- H1.FG.016** 5
- H1.FG.018** 6
- H1.FG.021** 7 +
- H1.FG.023** 8 +
- H1.FG.027** 10 ▣
- H1.FGSL.006** 1/2 +
- H1.FGSL.008** 1 +
- H1.FGSL.010** 2 ▣
- H1.FGSL.012** 3 ▣
- H1.FGSL.014** 4 ▣

- H1.FGSL.016** 5 ▣
- H1.FGSL.018** 6 ▣
- H1.FGSL.023** 8 ▣
- H1.FGSL.027** 10 ▣
- H1.RA.005** 1/4 ▣
- H1.RA.006** 1/2 ▣
- H1.RA.008** 1 ▣
- H1.RA.009** 1 1/2 ▣
- H1.RA.010** 2 ▣
- H1.RA.012** 3 ▣
- H1.RA.014** 4 ▣
- H1.RA.016** 5 ▣
- H1.RA.018** 6 ▣
- H1.RA.021** 7 ▣
- H1.RA.023** 8 ▣
- H1.RA.027** 10 ▣
- H1.RASL.008** 1 ▣
- H1.RASL.010** 2 ▣
- H1.RASL.012** 3 ▣
- H1.RASL.014** 4 ▣
- H1.RASL.016** 5 ▣
- H1.RASL.018** 6 ▣
- H1.RASL.021** 7 ▣
- H1.RASL.023** 8 ▣
- H1.HP.005** 1/4 ▣

- H1.HP.006** 1/2 ▣
- H1.HP.007** 3/4 ▣
- H1.HP.008** 1 ▣
- H1.HP.009** 1 1/2 ▣
- H1.HP.010** 2 ▣
- H1.HP.012** 3 ▣
- H1.HP.014** 4 ▣
- H1.HP.016** 5 ▣
- H1.HP.018** 6 ▣
- H1.HP.021** 7 ▣
- H1.HP.023** 8 ▣
- H1.HP.027** 10 ▣
- H1.HPSY.016** ▣
- H1.HPSY.021** ▣
- H1.HPSY.023** 8 ▣
- H1.HPSL.023** 8 ▣



H2.RA.018 <sup>39</sup>



H25.FG.012 <sup>36L</sup>

H25.FG.014 <sup>37L</sup>



H7.RA.008 <sup>330</sup>

H7.RA.012 <sup>332</sup>

H7.RA.014 <sup>333</sup>



H7S.FG.009 <sup>330 1/2S</sup>

H7S.FG.010 <sup>331S</sup>

H7S.FG.012 <sup>332S</sup>

H7S.FG.014 <sup>333S</sup>

H7S.FG.016

**100 Packs**  
... available for sizes  
FG  
**329MWV**  
**330MWV**



H24.FG.006 <sup>329MWV</sup>

H24.FG.008 <sup>330MWV</sup>



H21.FGSS.009 <sup>56</sup>

H21.FGSS.010 <sup>57</sup>

H21.FG.008 <sup>55</sup>

H21.FG.009 <sup>56</sup>

H21.FG.010 <sup>57</sup>

H21.FG.012 <sup>58</sup>

H21.FG.014 <sup>59</sup>

**100 Packs**  
... available for sizes  
FG FG  
**33 1/2 35**  
**34 36**  
**34 1/2 37**  
**38**



H2.FGSS.010 <sup>35</sup>

H2.FG.006 <sup>33 1/2</sup>

H2.FG.008 <sup>34</sup>

H2.FG.009 <sup>34 1/2</sup>

H2.FG.010 <sup>35</sup>

H2.FG.012 <sup>36</sup>

H2.FG.014 <sup>37</sup>

H2.FG.016 <sup>38</sup>

H2.FG.018 <sup>39</sup>

H2.RA.006 <sup>33 1/2</sup>

H2.RA.008 <sup>34</sup>

H2.RA.010 <sup>35</sup>

H2.RA.012 <sup>36</sup>

H2.RA.014 <sup>37</sup>

H2.RA.016 <sup>38</sup>

**100 Packs**  
... available for sizes  
FGSS FG  
**330 330**  
**331 331**



H7.FGSS.008 <sup>330</sup>

H7.FGSS.010 <sup>331</sup>

H7.FGSS.012 <sup>332</sup>

H7.FG.006 <sup>329</sup>

H7.FG.008 <sup>330</sup>

H7.FG.009

H7.FG.010 <sup>331</sup>

H7.FG.012 <sup>332</sup>

H7.FG.014 <sup>333</sup>

H7.FG.018

**100 Packs**  
... available for sizes  
FG  
**009**



H7SVG.FG.009

H7SVG.FG.010

**100 Packs**  
... available for sizes  
FGSS FG  
**245 245**



H245.FGSS.008 <sup>245</sup>

H245.FG.007 <sup>244</sup>

H245.FG.008 <sup>245</sup>

H245.FG.014



H256.FG.009 <sup>256</sup>



**100 Packs**  
... available for sizes  
FGSS FG FGSL  
**556 556 557**  
**557 557 558**  
**558**



H7L.FG.010 <sup>331L</sup>

H7L.FG.012 <sup>332L</sup>

H7L.FG.014 <sup>333L</sup>



H31.FGSS.008 <sup>555</sup>

H31.FGSS.009 <sup>556</sup>

H31.FGSS.010 <sup>557</sup>

H31.FG.008 <sup>555</sup>

	H31.FG.009	556
	H31.FG.010	557
	H31.FG.012	558
	H31.FG.014	559
	H31.FG.016	560
	H31.FG.018	561
	H31.FGSL.010	557 +
	H31.FGSL.012	558 +
	H31.FGSL.014	559 +

	H31L.FG.009	556L
	H31L.FG.010	557L
	H31L.FG.012	558L
	H31L.FG.014	559L

**100 Packs**  
...available for sizes  
FG  
**557S**

H31S

	H31S.FG.010	557S
--	-------------	------

**100 Packs**  
...available for sizes  
FG  
**1156S**  
**1157S**  
**1158S**

H021RS

	H021RS.FG.009	1156S
	H021RS.FG.010	1157S
	H021RS.FG.012	1158S

	H21S.FG.010	57S
--	-------------	-----

	H21R.FG.009	1156
	H21R.FG.010	1157
	H21R.FG.012	1158
	H21R.FG.014	1159

	H21LR.FG.010	1157L
--	--------------	-------

**100 Packs**  
...available for sizes  
FG  
**1556S**  
**1557S**  
**1558S**

H031RS

	H031RS.FGSS.009	1556S
	H031RS.FGSS.010	1557S
	H031RS.FG.009	1556S
	H031RS.FG.010	1557S
	H031RS.FG.012	1558S
	H031RS.FGSL.010	1557S +
	H031RS.FGSL.012	1558S +



**100 Packs**  
...available for sizes  
FG  
**1557**  
**1558**

H31R

	H31R.FG.010	1557
	H31R.FG.012	1558

	H23.FG.008	168
	H23.FG.009	169
	H23.FG.010	170
	H23.FG.012	171
	H23.FG.016	172
	H23.FG.021	173 +

	H26M.FG.012	271MWV
--	-------------	--------

**100 Packs**  
...available for sizes  
FG  
**169L**  
**170L**

H23L

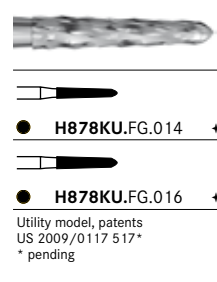
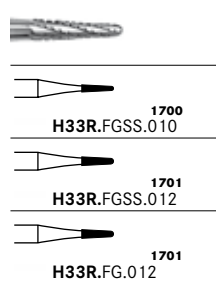
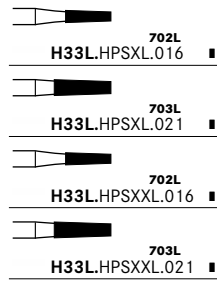
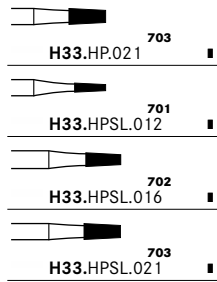
	H23L.FG.009	169L
	H23L.FG.010	170L
	H23L.FG.012	171L
	H23L.FG.016	172L
	H23L.FGSL.009	169L +
	H23L.FGSL.010	170L +



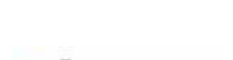
**100 Packs**  
...available for sizes  
FGSS FG  
**699 699**  
**700 700**  
**701 701**

H33

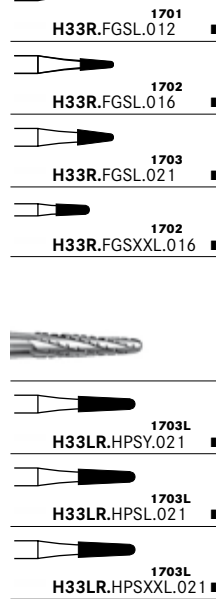
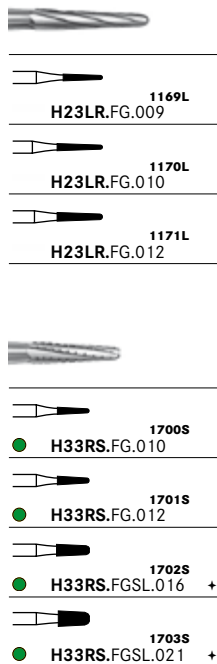
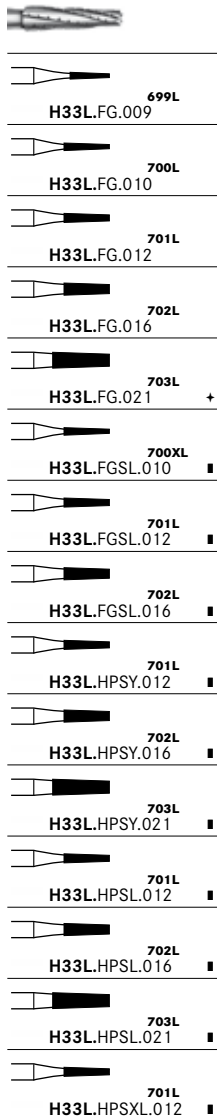
	H33.FGSS.009	699
	H33.FGSS.010	700
	H33.FGSS.012	701
	H33.FG.009	699
	H33.FG.010	700
	H33.FG.012	701
	H33.FG.016	702
	H33.FG.021	703 +
	H33.FGSL.010	700 +
	H33.FGSL.012	701 +
	H33.FGSL.016	702 +
	H33.FGSL.021	703
	H33.HP.009	699
	H33.HP.010	700
	H33.HP.012	701
	H33.HP.016	702



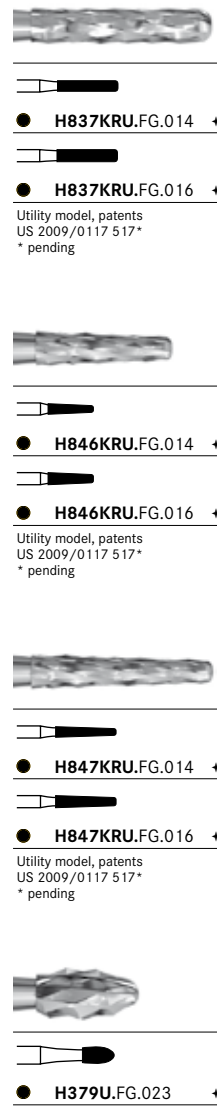
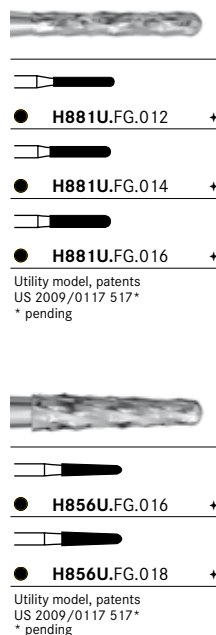
**Working on Titanium**



**100 Packs**  
...available for sizes  
FG  
**699L**  
**700L**  
**701L**



**Crown Prepping Carbides**



### Crown Cutters



○ ● H4MC.FG.012



○ ● H4MCL.FG.012



○ ● H4MCXL.FG.014



○ ● H4MCXXL.FG.014 +



● ● H34.FG.012



**100 Packs**  
... available for sizes  
FG  
**012**  
**H40**



H40.FG.012



● 1958  
● H36R.FG.012



● H35L.FG.012

**Amalgam Remover**



● H32.FG.012



● ● H34L.FG.012

### Q-Finishers®



● ● H134Q.FG.014



● ● H135Q.FG.014 +



● ● H48LQ.FG.012 +



● ● H375RQ.FG.016



● ● H379Q.FG.018

● ● H379Q.FG.023 +

● ● H50AQ.FG.010



● ● H246Q.FG.009



● ● H390Q.FG.018 +

### Facial Surface Trimming - FS®



● H132.FG.008 +



● H132F.FG.008 +



○ H132UF.FG.008 +



● H132A.FG.008 +



● H133.FG.010



● H133F.FG.010



○ H133UF.FG.010



● H134.FG.014



● H134F.FG.014



○ H134UF.FG.014



● H135.FG.014 +



● H135F.FG.014 +



○ H135UF.FG.014 +

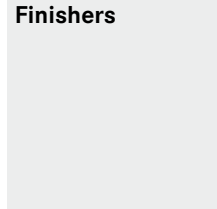


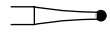
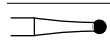
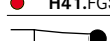
● H135VG.FG.014+






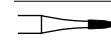
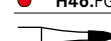
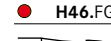
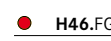
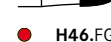


**Finishers**



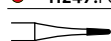
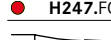
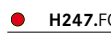
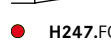



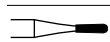
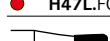
-  **H41.FGSL.014** <sup>7004</sup> +
-  **H41.FGSL.018** <sup>7006</sup> +
-  **H41.FGSL.023** <sup>7008</sup> ▣

- 
-  ○ **H246LUF.FG.012**

- 
-  ● **H46.FG.012** <sup>7102</sup>
-  ● **H46.FG.014** <sup>7104</sup>
-  ● **H46.FG.018** <sup>7106</sup>
-  ● **H46.FG.023** <sup>7108</sup> +
-  ● **H46.RA.012** <sup>7102</sup> ▣



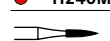
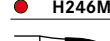
**100 Packs**  
...available for sizes  
FG  
**7404**  
**7406**  
**7408**


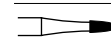
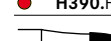
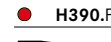
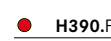
- 
-  ● **H247.FG.007**
-  ● **H247.FG.009** <sup>7801</sup>
-  ● **H247.FG.010** <sup>7802</sup>
-  ● **H247.FG.012** <sup>7803</sup>
-  ● **H247.RA.009** <sup>7801</sup> ▣


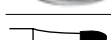
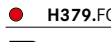
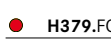
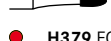
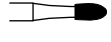

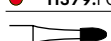
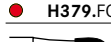
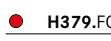

- 
-  ● **H47L.FG.012** <sup>7303</sup>
-  ● **H47L.FG.014** <sup>7304</sup>


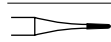
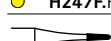
**100 Packs**  
...available for sizes  
FG  
**7901MWV**  
**7902MWV**




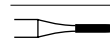
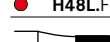
- 
-  ● **H246M.FG.009** <sup>7901MWV</sup>
-  ● **H246M.FG.010** <sup>7902MWV</sup>
-  ● **H246M.FG.012** <sup>7903MWV</sup>



- 
-  ● **H390.FGSS.016**
-  ● **H390.FG.016**
-  ● **H390.FG.018**
-  ● **H390.FGSL.016** +


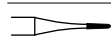
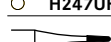
- 
-  ● **H379.FGSS.018** <sup>7406</sup>
-  ● **H379.FG.014** <sup>7404</sup>
-  ● **H379.FG.018** <sup>7406</sup>
-  ● **H379.FG.023** <sup>7408</sup> +
-  ● **H379.FGSL.014** <sup>7404</sup> +
-  ● **H379.FGSL.018** <sup>7406</sup> +
-  ● **H379.FGSL.023** <sup>7408</sup> ▣
-  ● **H379.RA.014** <sup>7404</sup> ▣
-  ● **H379.RA.018** <sup>7406</sup> ▣
-  ● **H379.RA.023** <sup>7408</sup> ▣




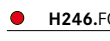
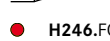
- 
-  ● **H247F.FG.007**
-  ● **H247F.FG.009**

**100 Packs**  
...available for sizes  
FG  
**7901**  
**7902**


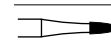
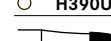
- 
-  ● **H48L.FG.010** +
-  ● **H48L.FG.012** +



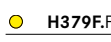
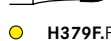
- 
-  ● **H390F.FG.016**



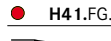
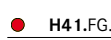
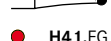


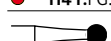
- 
-  ○ **H247UF.FG.007**
-  ○ **H247UF.FG.009**


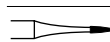
- 
-  ● **H246.FGSS.009** <sup>7901</sup>
-  ● **H246.FG.009** <sup>7901</sup>
-  ● **H246.FG.010** <sup>7902</sup>
-  ● **H246.FG.012** <sup>7903</sup>


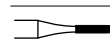
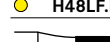


- 
-  ○ **H390UF.FG.016**
-  ○ **H390UF.FG.018**



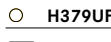
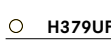
- 
-  ● **H379F.FG.014**
-  ● **H379F.FG.018**
-  ● **H379F.FG.023** +

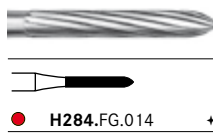
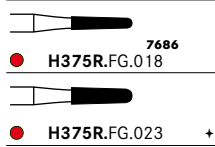
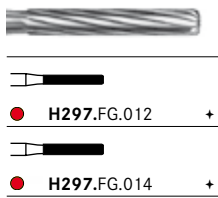
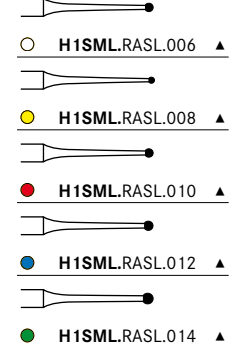
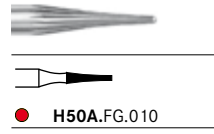
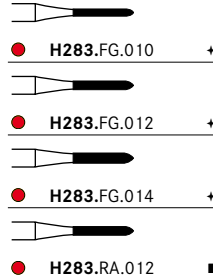
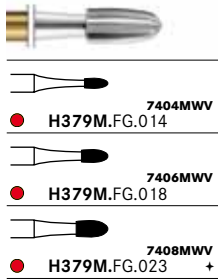
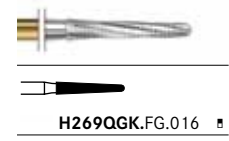
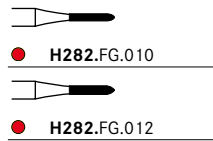
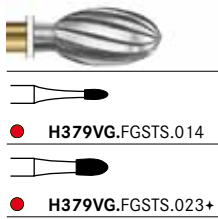
- 
-  ● **H41.FG.010** <sup>7002</sup>
-  ● **H41.FG.012** <sup>7003</sup>
-  ● **H41.FG.014** <sup>7004</sup>
-  ● **H41.FG.018** <sup>7006</sup>
-  ● **H41.FG.023** <sup>7008</sup> +
-  ● **H41.FG.027** <sup>7009</sup> ▣
-  ● **H41.FG.031** <sup>7010</sup> ▣

- 
-  ○ **H246UF.FG.009**

- 
-  ● **H48LF.FG.010** +
-  ● **H48LF.FG.012** +

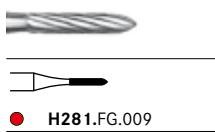
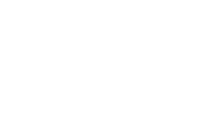
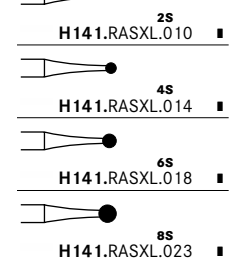
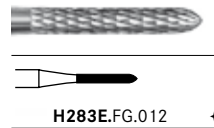
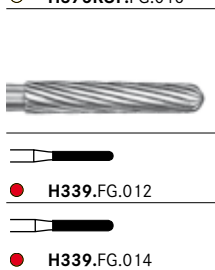
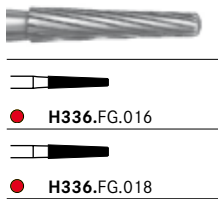
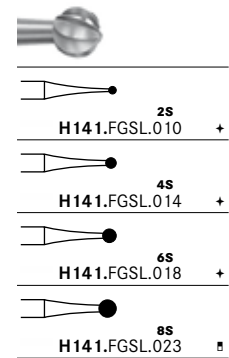
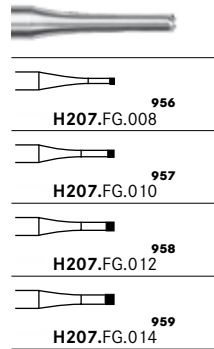
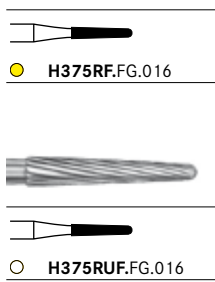
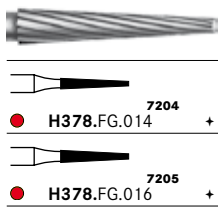
- 
-  ○ **H48LUF.FG.010** +
-  ○ **H48LUF.FG.012** +

- 
-  ○ **H379UF.FG.014**
-  ○ **H379UF.FG.018**
-  ○ **H379UF.FG.023** +

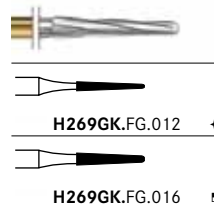
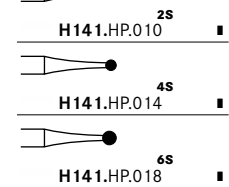


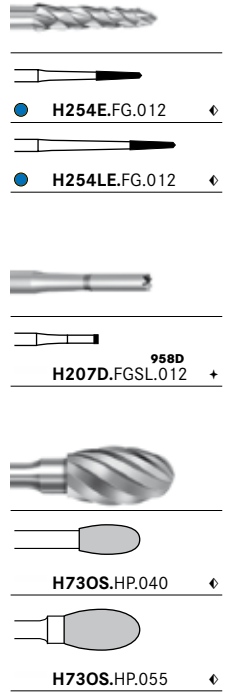
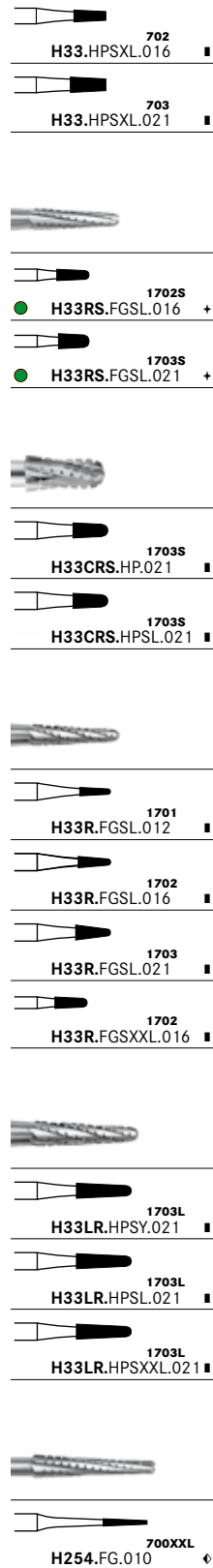
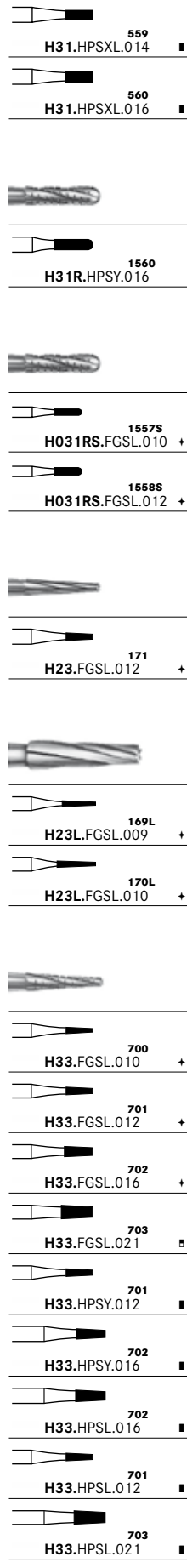
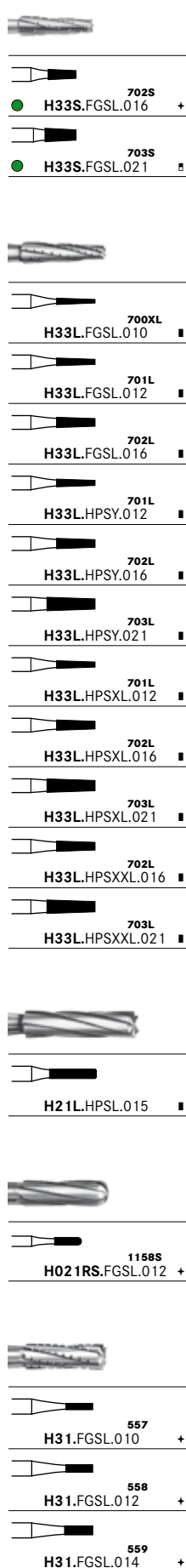
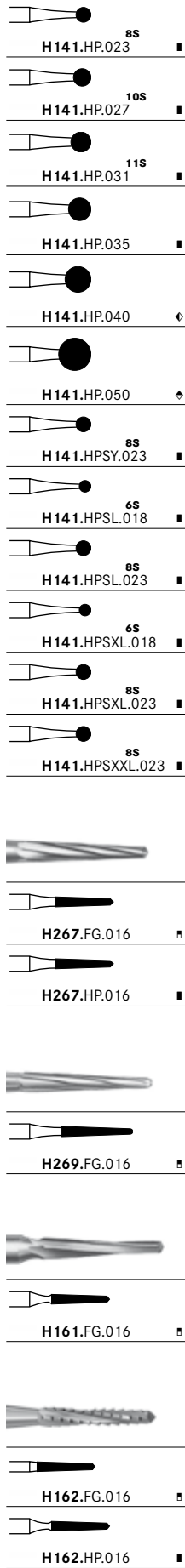
### Special Instruments

### Surgery Carbides



### Endo Carbides





Komet USA LLC  
3042 Southcross Blvd, Suite 101  
Rock Hill, SC 29730  
Phone 888-566-3887  
Fax 800-223-7485  
info@kometusa.com  
www.kometusa.com

