

EVOLVE MATRIX



∞ BIOCLEAR

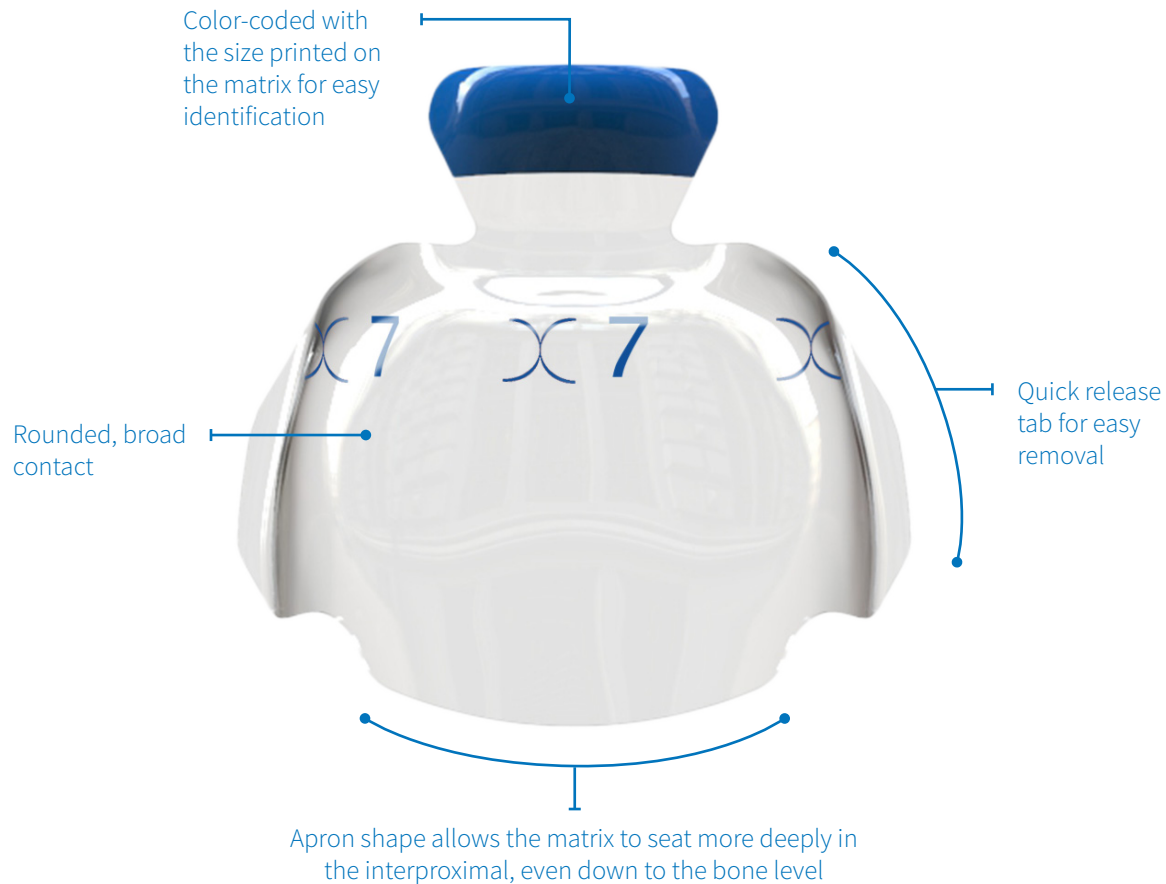
SERIES INSTRUCTIONS

THE NEXT EVOLUTION

IN SECTIONAL MATRICES



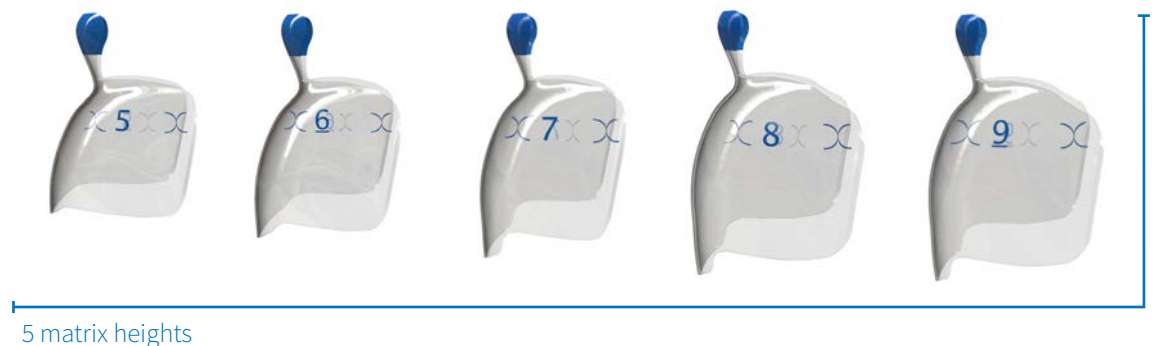
BLUE EVOLVE



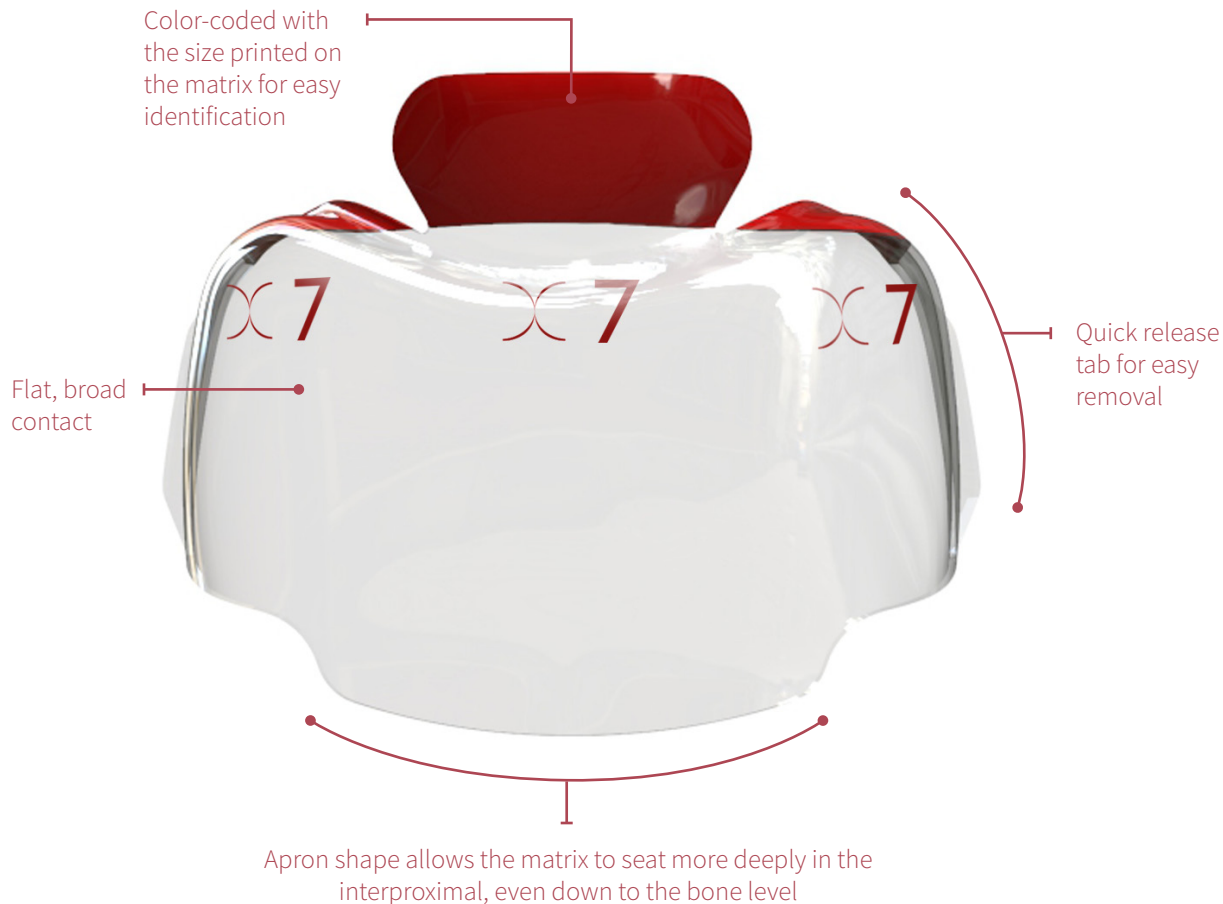
The Blue Evolve Matrix is color-coded to be easily seen, features an aggressively rounded emergence profile, and comes in five sizes to provide an adequate fit.

The occlusal curvature of the matrix creates a rounded marginal ridge with ease. The size and shape is appropriate for most posterior molar cases and offers significantly more buccal-lingual and occlusal wrap around the tooth than the BioFit Matrix series.

All matrices are 75 microns thick and anatomically pre-shaped. This makes them stiffer than other mylar matrices, easier to place, and easier to adapt. Their apron shaped bottom can be seated deeper into the sulcus—even down to the bone level—helping to create infinity margins with minimal overhangs and broad contacts. The matrices' translucence allows for three point curing of the heated composite on the buccal, lingual, and occlusal of the tooth, essential to properly light cure bulk-fill composites thoroughly.



PINK EVOLVE



The Pink Evolve Matrix is color-coded to be easily seen, features a broad emergence profile curvature and comes in three sizes to provide an adequate fit.

Pink Evolve was created for instances where the Blue Evolve Matrix or Biofit HD Matrix would invert. This commonly occurs between maxillary 1st and 2nd molars due to:

- Broad teeth
- Teeth with root proximity
- Very flat teeth

The interproximal of the 1st and 2nd maxillary molars are often much wider buccal-lingually than any other embrasure areas. This can cause a traditional sectional matrix to invert buccal-lingually. The root proximity often causes a normal sectional matrix to invert occluso-gingivally and buccal-lingually.

Pink Evolve's shape offers more buccal-lingual and occlusal wrap around the tooth, allowing for superior outcomes.



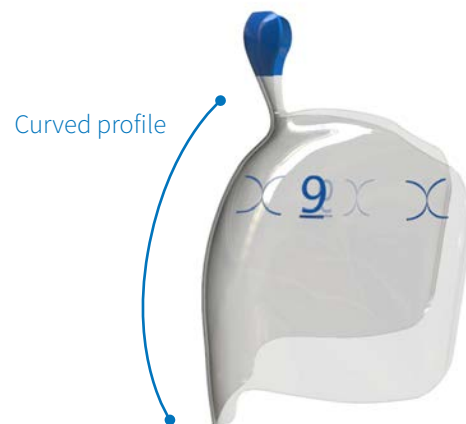
WIDTH

While the width of the Blue Evolve Matrix is similar to the Biofit HD, it is suitable for most all posterior cases. The width of the Pink Evolve Matrix allows you to work on wider 1st and 2nd maxillary molars where a Blue Evolve or Biofit HD would typically invert.



PROFILE

The aggressively rounded emergence profile of the Blue Evolve Matrix does all the work for you to create a tight contact. The flat profile of the Pink Evolve Matrix helps to create an amazing contact on the typically wider buccal-lingual of the 1st and 2nd maxillary molars.



GETTING STARTED

Keys to Success: Use a rubber dam. Choose the correct matrix. Use a Bioclear Evolve Matrix for three point curing through a translucent matrix; key to curing bulk-fills. Bioclear Forceps (designed specifically for the Twin Ring) or proper matrix orientation. Make sure the tab is opposite of the gingival; seat the matrix deep into the sulcus.

MATRIX SELECTION

There are two lines of Bioclear Evolve Matrices: Evolve Blue and Evolve Pink. Matrix selection is primarily based on doctor preference but, in general, Evolve Blue is similar to Biofit HD in stiffness and emergence profile, whereas Evolve Pink is broader and has a flat emergence profile that is easier to use on broad, very flat teeth, or teeth with root proximity.



THE BIOCLEAR PUSH-PULL INSTRUMENT

The Bioclear Push-Pull Instrument was created to ensure tight contacts, particularly when there is not interproximal tooth structure to hold the matrix tightly to the adjacent tooth. To learn about this instrument and the Spot-Weld / Push-Pull Technique, we recommend you view this video: <https://www.bioclearmatrix.com/videos/class-2-restorations/>



PUSH-PULL

TWIN RING TIPS

The Bioclear Forceps are specifically designed for safely and securely opening and placing the Twin Ring. Ensure that the tines of the forceps are completely engaged with the plastic handles of the Twin Ring (see illustration). If they are not fully engaged or if the tines are seated on the metal, they can cause the Twin Ring to break. There are two types of Twin Rings: purple, for molars, and yellow, for pre-molars. **DO NOT use alcohol wipes or other cold sterilization methods—this will void the warranty.**



DEEP MARGIN ACQUISITION (DMA)

The deep margin acquisition matrices are here for both pink and blue Evolve matrices. Pack a #3 cord moistened with astringent in the interproximal aggressively, remove the cord, and blast. The DMA protocol allows the apron of the matrix to seat deeply, eliminating problems such as overhangs and under-fills. The DMA protocol can be utilized regardless of matrix height and anytime you desire that the matrix seat deeper.



DMA PROTOCOL

EVOLVE MATRIX SERIES: THE NEXT EVOLUTION IN CONTACTS

1) PRE-WEDGE AND PREPARE THE TOOTH

Evaluate the pre-operative bite-wing x-ray and select the appropriate Diamond Wedge. Insert the Bioclear Diamond Wedge before cavity preparations. This will stretch the periodontal ligaments providing more working space and separation for a tight contact once the restoration is complete. Prepare the tooth. Make sure to break the contact using a fine bur or the TruContact Sander.

2) SELECT YOUR MATRIX

Select the colored matrix that is the ideal height, shape and width for your procedure. You may use a periodontal probe to measure height of cavity.

3) REMOVE WEDGE AND PLACE BIOCLEAR EVOLVE MATRIX INTO THE EMBRASURE

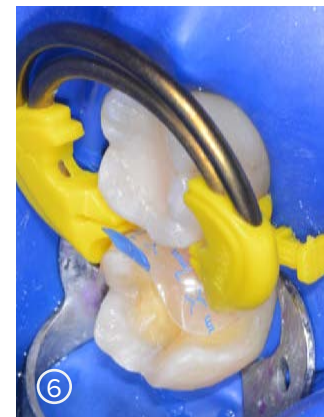
Remove the pre-wedge. Then, using cotton pliers, grip the small tab on the selected Evolve Matrix. Slide the matrix into the embrasure space, making sure the matrix is centered on the tooth and the tab is towards the occlusal. Make sure to seat the matrix fully by pressing on the occlusal tab firmly with your thumb.

4) WEDGE THE MATRIX

You can either re-use the pre-wedge or use a larger wedge against the matrix. While holding the matrix in place with your finger, insert the selected wedge against the matrix. Check that the wedge has not inverted the curve of the Bioclear Matrix. In deep caries cases, the wedge selection is advanced. Contact your Bioclear rep to learn more.

5) SPOT-WELD PUSH-PULL TECHNIQUE

After you have inserted your matrix and wedge, etch, rinse and dry. Then massage the adhesive into the dentin tubules for a full 20 seconds. Dab the adhesive up near the occlusal corners of the matrix. Air thin the adhesive until it stops moving. Before you light-cure the adhesive, use the Spot-Weld Push-Pull Technique. Create spot welds by dispensing flowable composite at the occlusal corners of the matrix on the buccal and lingual. Use enough flowable to make sure it covers outside, over the top, and inside the matrix corner. Insert the Push-Pull instrument into the prep and pull (if mesial) or push (if distal) the matrix against the neighboring tooth. While holding the matrix in place with the Push-Pull instrument, cure the spot-welds of flowable from the occlusal for only 5 seconds each. Remove the Push-Pull then cure the adhesive in the prep for 10 seconds.



6) PLACE THE TWIN RING

Open the Twin Ring using the Bioclear Twin Ring Forceps just enough to get past the matrix, down to the gingival margin. Release the forceps to clamp the ring over the top of the wedge and down against the matrix and teeth. Ensure that the matrix is between the ring tines and the tooth, is not folded inside the hands of the ring, and is properly positioned. Use your fingers to lightly press on the ring to seat it more fully. Gently adapt the matrix against the neighboring tooth.

7) PLACE THE COMPOSITE AND CURE

Using Bioclear's translucent matrices allows for three point curing, which is imperative for curing bulk-fills. Cure from the occlusal, remove separator, cure from the buccal, lingual to consummate three point curing before removing the matrix. Use the three point curing Technique to fully cure the composite.

8) THE FINAL STEPS

Sculpt and use the two-step Rockstar Polish Kit to finish.

INDICATIONS/SAFETY/STERILIZATION INSTRUCTIONS

Indications: The Bioclear Matrix Posterior System is indicated for all Class II restorations. This system utilizes Bioclear Twin Rings, Bioclear Diamond Wedges, and Bioclear Matrices.

SAFETY

To offer your patients the safest, most comfortable procedure possible, carefully read the enclosed instructions and watch the tutorials on the website prior to use.

Note: Check www.bioclearmatrix.com to find the most recently updated instructions and tutorials.

WARNINGS

The Bioclear Matrix Posterior system contains small, sharp components. Use of a rubber dam is mandatory to prevent inhalation of parts. Use of gloves and/or pliers are recommended to prevent lacerations.

Aspiration: Seek immediate medical attention if any part is inhaled.

Laceration: If laceration occurs by a clean matrix, use appropriate first aid measures and then discard the matrix according to local regulations. If laceration occurs by an unclean matrix, recommended post-exposure procedures should be taken in addition to the appropriate first aid treatment.

Handling: To protect patients from injury, please take care to remain in full control of all instruments at all times.

Use ONLY accessory tools designed, supplied, and/or outlined for use with the Bioclear Matrix Posterior System as listed in the instructions.

Precautions: Bioclear Matrix offers instructions and classes for using these products. Any use not specified in the instructions is not recommended and will be the responsibility of the attending practitioner.

Note: that the Twin Rings are under tension. Make sure that they are appropriately placed on the forceps prior to insertion and that they are seated firmly prior to removing the forceps.

STORAGE

Store in a clean, dry environment at temperatures between 10-24°C/50-75°F, away from sunlight, moisture, excess humidity, flame or sources of ignition.

Wedges and Matrices are for single use only. Used tools and materials are contaminated. Appropriate precautions should be taken to clean and/or discard according to standard procedures for sharps.

HYGIENE

Avoid Cross Contamination: Bioclear Matrices and Wedges are single use ONLY and should be appropriately disposed of in accordance with local regulations.

PRE-STERILIZATION

Rinse any contaminants from the Twin Ring. Use warm water and a soft nylon brush to gently wash the ring and then rinse in warm water.

DO NOT use alcohol wipes or other cold sterilization methods - this will void the warranty.

AUTOMATED WASHER DISINFECTOR

Rings can also be reused by cleaning them in a washer-disinfector. Only properly maintained, calibrated, and approved washer-disinfectors should be used in accordance with ISO 15883-1.

Place tools in the washer-disinfector in such a manner as to allow the water and detergent to enter and drain from device openings.

Follow washer-disinfector's Instructions for Use. Run washer-disinfector program with A0 value ≥ 3000 (e.g. 5 min at $\geq 90^{\circ}\text{C}$) using appropriate detergents. Tools can be reprocessed by washer-disinfector up to 500 times.

STERILIZATION

To ensure proper sterilization, all instruments should be steam-autoclaved at $134^{\circ}\text{C}/273^{\circ}\text{F}$ for at least 3 minutes. Rings should not be left in the autoclave for long periods as this may result in staining from the autoclave itself. Please note: DO NOT use chemical sterilization or ultrasonic cleaning techniques; the warranty will be voided if chemical sterilization or ultrasonic cleaning is used. Sterilization methods other than steam are NOT recommended by Bioclear Matrix and, if used, are the sole responsibility of the practitioner.

POST STERILIZATION

Allow tools to fully dry prior to storage. Forceps do not require further maintenance and should not be oiled or greased.