

Combined Antibacterial Effect of Sodium Hypochlorite and Root Canal Sealers against *Enterococcus faecalis* Biofilms in Dentin Canals

Tianfeng Du, PhD,^{*†} Zhejun Wang, PhD,^{‡#} Ya Shen, PhD,^{†§} Jingzhi Ma, PhD,^{||}
Yingguang Cao, PhD,^{||} and Markus Haapasalo, Dr Odont[†]

Abstract

Introduction: The present study aimed to evaluate the antibacterial effect of the combined use of sodium hypochlorite (NaOCl) and root canal sealers on *Enterococcus faecalis* biofilms using a dentin infection model. **Methods:** Cells of *E. faecalis* were introduced into the dentinal tubules by centrifugation and incubated in brain-heart infusion for 3 weeks. The biofilms in dentin were first subjected to 5% NaOCl or sterile water for 10 minutes followed by an equal thickness of AH Plus (Dentsply International Inc, York, PA), Endosequence BC Sealer (Brasseler USA, Savannah, GA), or MTA Fillapex (Angelus Indústria de Produtos Odontológicos S/A, Londrina, Brazil) placed on the root canal wall of the dentin specimens for 7, 30, and 60 days. Gutta-percha and water were used in a similar manner as controls. The proportions of dead and live bacteria inside the dentinal tubules were assessed by confocal laser scanning microscopy and viability staining. **Results:** The combined use of NaOCl and sealers (30 and 60 days) killed significantly more bacteria than NaOCl or sealers alone ($P < .05$). NaOCl + MTA Fillapex was the most effective antibacterial combination by killing 83% bacteria in dentin tubules in 60 days. Thirty and 60 days of exposure to the sealers resulted in significantly more dead bacteria in dentin biofilms than 7-day exposures ($P < .05$). **Conclusions:** The placement of root canal sealer after NaOCl treatment enhanced antibacterial effects against *E. faecalis* in the dentinal tubules. Little additional effect was obtained after 30 days of exposure to sealers. (*J Endod* 2015;41:1294–1298)

Key Words

Confocal laser scanning microscopy, dentin, *Enterococcus faecalis*, sealer, sodium hypochlorite

A critical objective of endodontic treatment of a tooth with apical periodontitis is to eliminate the microorganisms within the root canal system. Bacteria and their by-products are important etiologic factors in pulpal necrosis and periapical pathosis (1, 2). Although sodium hypochlorite (NaOCl) is well-known as an effective disinfectant with a wide antimicrobial spectrum in root canal treatment (3), evidence suggests that persistent microorganisms after endodontic treatment can survive and interfere with healing (4). Different microorganisms in the root canal infection may invade dentinal tubules where the viable bacteria may be better protected from intracanal irrigants than in the main canal (5–7). The use of root canal sealers with antibacterial activity is assumed to further reduce the number of remaining microorganisms, aiming to maximize killing of bacteria in infected dentin.

Many different techniques have been used to measure the effectiveness of treatment procedures against bacteria in dentinal tubules (5, 8–10). One of the major challenges with the traditional dentin block model has been the difficulty to obtain a strong, deep, and comparable infection in dentin. The lack of a predictable, heavy presence of bacteria in dentin canals makes it difficult to measure the comparative effectiveness of various disinfecting agents (9, 11). Therefore, a new model of dentin infection was developed to secure a predictable, dense, and deep penetration of bacteria in dentin canals using centrifugation (11). Results obtained using this model and viability staining with confocal laser scanning microscopy (CLSM) have shown reproducible data on dentin disinfection in different conditions, including different biofilm age (12), length of disinfectant exposure (13), and combinations of disinfecting agents (14).

The antimicrobial effect of NaOCl (13, 15) and root canal sealers (16) in dentin infection has recently been reported using the dentin infection model, showing up to 78% and 46% of bacterial killing, respectively, depending on the time of exposure and NaOCl concentration. Therefore, it is hypothesized that the use of both of these strategies may have an additive or synergistic effect on the killing of bacteria cells. So far, such evidence is lacking.

By using this dentin infection model, the present study aimed to evaluate the long-term antibacterial effectiveness of NaOCl followed by different root canal sealers against *E. faecalis* biofilms in dentin using viability staining and CLSM.

From the *Department of Stomatology, the First Affiliated Hospital of Zhengzhou University, Zhengzhou, China; †Faculty of Dentistry, Division of Endodontics, Department of Oral Biological and Medical Sciences, University of British Columbia, Canada; ‡The State Key Laboratory Breeding Base of Basic Science of Stomatology (Hubei-MOST) and Key Laboratory of Oral Biomedicine Ministry of Education, School and Hospital of Stomatology, Wuhan University, Wuhan, China; §Department of Materials Engineering, University of British Columbia, Vancouver, Canada; and ||Department of Stomatology, Tongji Hospital, Tongji Medical College, Huazhong University of Science and Technology, Wuhan, China.

Address requests for reprints to Dr Markus Haapasalo, UBC Faculty of Dentistry, Division of Endodontics, Oral Biological and Medical Sciences, 2199 Wesbrook Mall, Vancouver, BC, Canada V6T 1Z3. E-mail address: markush@dentistry.ubc.ca
0099-2399/\$ - see front matter

Copyright © 2015 American Association of Endodontists.
<http://dx.doi.org/10.1016/j.joen.2015.04.023>

Materials and Methods

Dentin Specimen Preparation

Thirty-two single-rooted caries-free teeth extracted for orthodontic reasons were collected under a protocol approved by the ethics committee of the university. According to a previously described protocol (11), 64 semicylindrical dentin halves were fractured and shaped to $4 \times 4 \times 2$ mm in size. The cementum layer on the external dentin surface was removed. The smear layer on both sides of the specimen was removed by immersion in 5% NaOCl (EMD Chemicals Inc, Darmstadt, Germany) and 6% citric acid (Sigma-Aldrich, St Louis, MO) (pH = 4.0) each for 4 minutes in an ultrasonic bath (Sankei Giken Industry Co Ltd, Tokyo, Japan).

The prepared dentin specimens, with their canal sides up, were placed on the bottom of the upper chamber of a Nanosep microfiltration tube (Pall Corp, Ann Arbor, MI). The gaps between the inner tube and the dentin specimen were sealed with a Revolution Formula 2 composite filling material (Kerr Co, Orange, CA) and light cured for 20 seconds.

Dentin Infection with *E. faecalis*

E. faecalis VP3-181 was used as the test organism and grown in air at 37°C overnight on brain-heart infusion (BHI) agar (Becton-Dickinson, Sparks, MD) plates. The bacteria were harvested and suspended in BHI broth. Cell density was spectrophotometrically standardized to 3×10^6 colony-forming units/mL. Following a protocol described in detail by Ma et al (11), 500 μ L *E. faecalis* suspension in BHI broth was added to each filter tube with the dentin specimen inside. The tubes were centrifuged at 1400g, 2000g, 3600g, and 5600g in a sequence twice each for 5 minutes. A fresh solution of bacteria was added between every centrifugation. All tubes were then incubated at 37°C in BHI broth in air for 24 hours after centrifugation to facilitate bacterial recovery. Filter tubes with infected dentin specimens were incubated for 3 weeks under the same conditions to allow biofilm growth and maturation in the dentinal tubules. Fresh BHI broth was changed once a week.

Disinfection of Dentin with NaOCl

The dentin specimens were taken out of each tube, and the surrounding composite was removed, rinsed in sterile water for 1 minute, and air dried. The outer surfaces (cemental sides) of the specimens were sealed with nail varnish. The 64 infected dentin halves with 3-week-old *E. faecalis* biofilms were randomly allocated to 2 major groups, 5% NaOCl and sterile water, with 32 specimens in each group. A droplet of 50 μ L NaOCl or water was placed on the root canal wall of the specimens for 10 minutes; a new droplet was added after 5 minutes of exposure. The specimens were then rinsed with sterile water for 1 minute.

Sealer Placement

Three different endodontic sealers, AH Plus (Dentsply International Inc, York, PA), Endosequence BC Sealer (Brasseler USA, Savannah, GA), and MTA Fillapex (Angelus Indústria de Produtos Odontológicos S/A, Londrina, Brazil), were used after exposure to NaOCl or sterile water. Thirty-six dentin specimens were randomly divided into 6 groups with 6 specimens in each sealer-containing group. All sealers were prepared in strict compliance with the manufacturers' instructions. Each freshly prepared sealer was placed on the dentin surface of the root canal wall to achieve an approximate thickness of 0.5 mm. Sterile water and gutta-percha (Brasseler USA) without sealer (used after NaOCl or sterile treatment) were used as the control groups with 16 and 12 specimens, respectively. For the gutta-percha control group, gutta-percha points were cut to match the width of the semicy-

lindrical dentin halves and pressed against the root canal wall of the specimens. In the sterile water control group, 50 μ L sterile water was placed on the dentin surface. Four specimens in the sterile water group were used for the evaluation of the instant killing effect by 5% NaOCl on day 0 (Table 1). All other dentin samples were placed at 37°C in 100% relative humidity for 7, 30, and 60 days.

Confocal Laser Scanning Microscopic Examination

Two semicylindrical dentin halves (4 samples after fracturing the halves) of each group were examined at each time point by viability staining and CLSM. The sealers were scraped off the root canal wall dentin. The semicylindrical specimens were rinsed in sterile water for 1 minute and vertically fractured through the root canal into 2 halves to expose a fresh surface of longitudinally fractured dentinal tubules for confocal laser scanning microscopic examination as previously described (11).

LIVE/DEAD BacLight Bacterial Viability stain (Molecular Probes, Eugene, OR) containing SYTO 9 and propidium iodide was used for staining of a total of 128 fractured dentin specimens according to the manufacturer's instruction. A confocal laser scanning microscope (Nikon Eclipse C1; Nikon Canada, Mississauga, ON, Canada) was used to view the fluorescence from the stained bacterial cells using a 20 \times lens with an additional zoom of 2 \times . Four areas on the border of the root canal were randomly chosen on each of the 4 specimens in each group per time point for confocal laser scanning microscopic scanning. Images were acquired by EZ-C1 v.3.40 build 691 software (Nikon Canada) at a 512 \times 512 pixel scan area. A stack of 20 slices (0.5-mm step size) was scanned for each area (0.30 \times 0.30 mm) on each sample.

The confocal laser scanning microscopic data were processed by Imaris 7.2 software (Bitplane Inc, St Paul, MN). The thresholds of the red and green fluorescences were manually set according to their respective fluorescence intensity and kept consistent for each sample. Live/dead ratios of the infected dentinal tubules were then automatically calculated by the software. The volume ratio of red fluorescence to green and red fluorescence indicated the proportion of killed cells. The proportions of dead cell volume after exposure to different treatments were subjected to univariate analysis of variance using SPSS 16.0 (SPSS Inc, Chicago, IL). Post hoc multiple comparisons were used to isolate and compare the results at a significance level of $P < .05$.

Results

Confocal laser scanning microscopic results showed a homogeneous penetration of *E. faecalis* deep into the dentinal tubules of the dentin specimens (Fig. 1). Five percent NaOCl and root canal sealers killed 66%–68% and 27%–55% bacteria in dentin tubules, respectively, when used alone (Table 1). The proportion of killed bacteria increased significantly during the first 30 days of exposure to the 3 sealers ($P < .05$) but remained stable after that ($P > .05$).

Significantly more bacteria were dead when NaOCl and sealers (exposure for 30 and 60 days) were used in combination than when used alone ($P < .05$) (Table 1). No significant difference was found between NaOCl alone and NaOCl + sealer treatment at 7 days of sealer exposure ($P > .05$) (Table 1). Thirty- (Fig. 1A4–E4) and 60-day (Fig. 1A6–E6) exposure to the sealers resulted in significantly more dead bacteria in dentin than the 7-day (Fig. 1A2–E2) exposure ($P < .05$) (Table 1), whereas no statistically significant increase of the proportion of dead bacteria was detected between 30- (Fig. 1A3–E4) and 60-day samples (Fig. 1A5–E6) ($P > .05$). The combination of NaOCl and MTA Fillapex (Fig. 1C1–C6) exhibited the highest effectiveness by killing 83% of the bacteria in dentin ($P < .05$).

TABLE 1. Proportion of Dead Cell Volume in 3-week-old *E. faecalis* Biofilm in Dentin after Exposure to Sodium Hypochlorite and Root Canal Sealers for 7, 30, and 60 Days

| Time (d) | AH Plus | | BC Sealer | | MTA Fillapex | | Gutta percha | | Sterile water | |
|----------|---------------------------|--------------------------|---------------------------|--------------------------|---------------------------|--------------------------|----------------------------|--------------------------|----------------------------|--------------------------|
| | 5% NaOCl | Sterile water | 5% NaOCl | Sterile water | 5% NaOCl | Sterile water | 5% NaOCl | Sterile water | 5% NaOCl | Sterile water |
| 0 | — | — | — | — | — | — | — | — | — | — |
| 7 | 0.68 ± 0.04 ^{ef} | 0.30 ± 0.02 ^b | 0.67 ± 0.05 ^{ef} | 0.27 ± 0.03 ^b | 0.73 ± 0.03 ^{gh} | 0.41 ± 0.02 ^c | 0.68 ± 0.03 ^{efg} | 0.08 ± 0.02 ^a | 0.67 ± 0.03 ^e | 0.07 ± 0.03 ^a |
| 30 | 0.74 ± 0.03 ^{gh} | 0.39 ± 0.02 ^c | 0.75 ± 0.05 ^h | 0.40 ± 0.03 ^c | 0.81 ± 0.03 ^j | 0.53 ± 0.04 ^d | 0.67 ± 0.05 ^{ef} | 0.06 ± 0.02 ^a | 0.68 ± 0.05 ^{efg} | 0.06 ± 0.02 ^a |
| 60 | 0.77 ± 0.02 ^{hi} | 0.41 ± 0.01 ^c | 0.76 ± 0.04 ^h | 0.40 ± 0.04 ^c | 0.83 ± 0.02 ^j | 0.55 ± 0.04 ^d | 0.70 ± 0.02 ^{efg} | 0.06 ± 0.02 ^a | 0.66 ± 0.04 ^e | 0.06 ± 0.02 ^a |

Different superscript letters indicate statistically significant differences between groups ($P < .05$).

(Fig. 1 and Table 1). No statistically significant difference was detected between AH Plus and BC Sealer ($P > .05$). In control specimens with water (Fig. 1D1–D6) or gutta-percha (Fig. 1E1–E6), only 92%–95% of the bacteria remained viable in dentin throughout the 60-day period (Table 1).

Discussion

Using the dentin infection model, the combined use of NaOCl and sealers killed significantly more bacteria in 30 and 60 days than when NaOCl or sealers were used alone. The present study is the first time when the antibacterial effect by consecutive exposures to NaOCl and root canal sealers has been measured in infected dentin. *E. faecalis* was chosen as the test organism because of its frequent presence in persistent endodontic infections and its use in numerous previous studies examining the effectiveness of disinfecting agents in endodontics (17, 18). *E. faecalis* has the ability to attach to dentin walls, invade into dentinal tubules, and form biofilm communities because of its relatively small cell diameter (18). The 3-week incubation period after centrifugation in the present study gave the bacteria time to recover and develop a mature biofilm in the dentin.

The detection of bacteria in the current study was done by using viability staining and CLSM. Viability staining has become a widely used method in measuring bacterial killing in biofilms (19–21), allowing for the measurement of the proportion of killed bacteria in each specimen, which has not been possible at the same level of sensitivity using culture methods and colony-forming unit counting. Parmar et al (22) found that green and red fluorescent bacteria were visible within the dentinal tubules of infected root sections when examined by CLSM. When using CLSM, it is inevitable that background fluorescence is also collected when dentin is examined. However, in the present model, the dentin canals were packed with high numbers of bacteria, and, therefore, the fluorescent signal from the bacteria was much stronger than the background fluorescence from dentin as shown in a previous study (11). A strong fluorescent signal from bacteria allows the use of low gain settings during confocal laser scanning microscopic scanning, minimizing the interference from background fluorescence.

The results in the present study show an additive antibacterial effect by the tested sealers when used after NaOCl, enhancing the overall effectiveness against *E. faecalis* in dentin. The final amount of bacteria killed clearly depended on the type of sealer. The NaOCl + MTA Fillapex group showed the highest percentage of bacterial killing, whereas the other 2 sealers, AH Plus and BC Sealer, were slightly less effective as judged by the overall killing of bacteria after 30 and 60 days of exposure (Table 1). The superior killing effect of MTA Fillapex may be related to the release of a resinous component and even its cytotoxicity (23). In BC Sealer, calcium silicate is combined with inorganic components (eg, calcium phosphate and calcium oxide) (24). The antibacterial ability of BC Sealer may be because of its high pH and the biomineralization process induced by calcium silicates/phosphates together with the participation of dentin mineral (16).

NaOCl alone showed no increased killing after 7 days, indicating that its effect had ended and that the bacteria did not die spontaneously after NaOCl exposure ended. However, when root canal sealer was used after NaOCl, the killing of bacteria continued for up to 30 days. In contrast to this finding, previous studies using a direct contact test in which dentin has not been present have shown that the sealers lose their antibacterial effect within a few hours or days after mixing (25, 26). The reason for this difference may be attributed to the dentin, which contributes to increased bacterial killing (27). In the

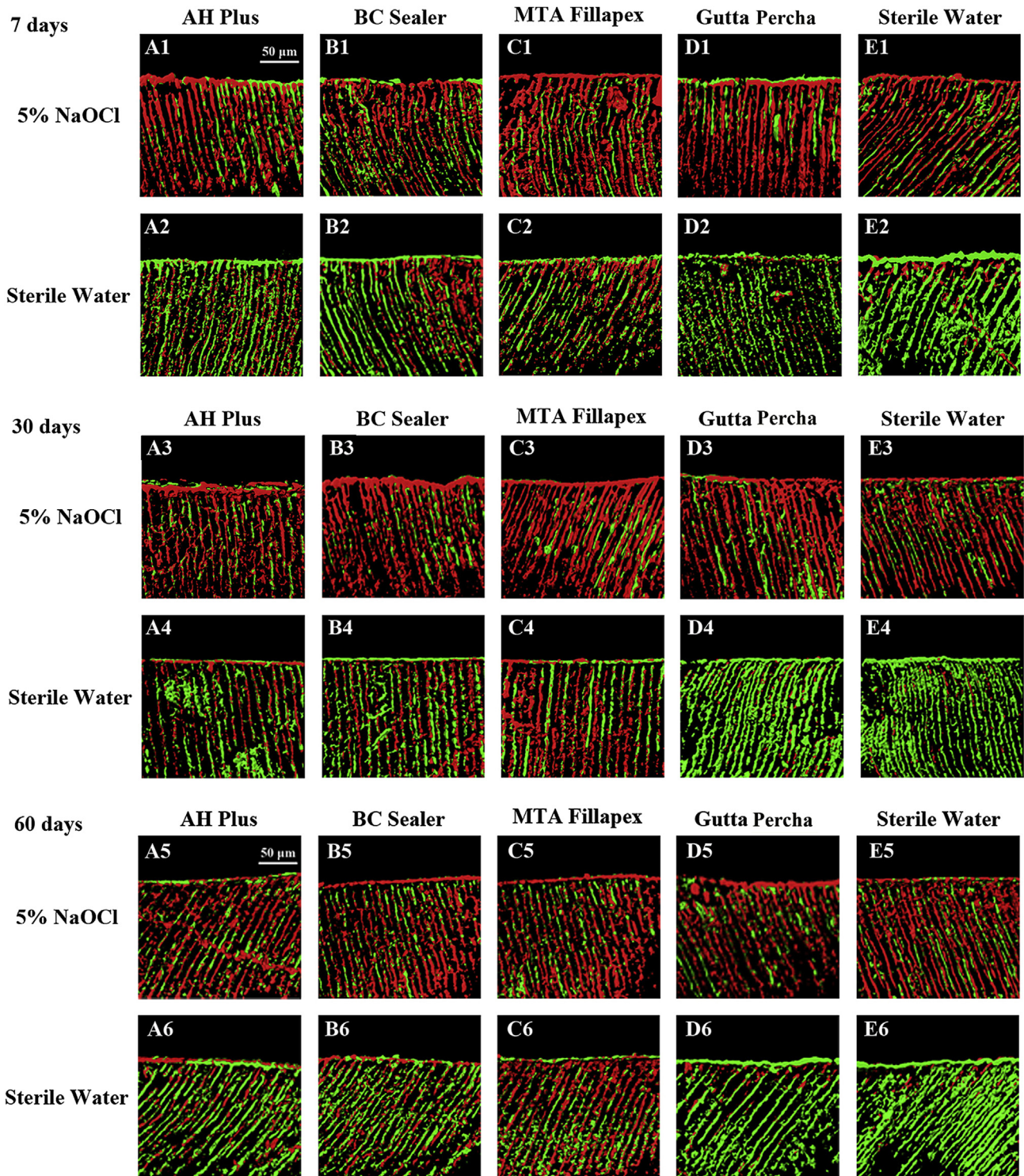


Figure 1. CLSM of dentin with 3-week-old *E. faecalis* biofilm after exposure to NaOCl and endodontic sealers for 7, 30, and 60 days. (A1) 5% NaOCl for 10 min + AH Plus for 7 days. (A2) Sterile water for 10 min + AH Plus for 7 days. (A3) 5% NaOCl for 10 min + AH Plus for 30 days. (A4) Sterile water for 10 min + AH Plus for 30 days. (A5) 5% NaOCl for 10 min + AH Plus for 60 days. (A6) Sterile water for 10 min + AH Plus for 60 days. (B1) 5% NaOCl for 10 min + BC Sealer for 7 days. (B2) Sterile water for 10 min + BC Sealer for 7 days. (B3) 5% NaOCl for 10 min + BC Sealer for 30 days. (B4) Sterile water for 10 min + BC Sealer for 30 days. (B5) 5% NaOCl for 10 min + BC Sealer for 60 days. (B6) Sterile water for 10 min + BC Sealer for 60 days. (C1) 5% NaOCl for 10 min + MTA Fillapex for 7 days. (C2) Sterile water for 10 min + MTA Fillapex for 7 days. (C3) 5% NaOCl for 10 min + MTA Fillapex for 30 days. (C4) Sterile water for 10 min + MTA Fillapex for 30 days. (C5) 5% NaOCl for 10 min + MTA Fillapex for 60 days. (C6) Sterile water for 10 min + MTA Fillapex for 60 days. (D1) 5% NaOCl for 10 min + gutta percha for 7 days. (D2) Sterile water for 10 min + gutta percha for 7 days. (D3) 5% NaOCl for 10 min + gutta percha for 30 days. (D4) Sterile water for 10 min + gutta percha for 30 days. (D5) 5% NaOCl for 10 min + gutta percha for 60 days. (D6) Sterile water for 10 min + gutta percha for 60 days. (E1) 5% NaOCl for 10 min + sterile water for 7 days. (E2) Sterile water for 10 min + sterile water for 7 days. (E3) 5% NaOCl for 10 min + sterile water for 30 days. (E4) Sterile water for 10 min + sterile water for 30 days. (E5) 5% NaOCl for 10 min + sterile water for 60 days. (E6) Sterile water for 10 min + sterile water for 60 days.

present model, freshly prepared sealers are placed on the root canal wall of the dentin samples. Dentin, with its complex surface, may act as a recipient for ions released from the sealers, and, thus, dentin appears to act as a catalyst for the dissolution of the sealer in aqueous suspension. The ionic flow between sealer and dentin appears to interfere with bacterial viability in dentinal tubules (27, 28).

The highest percentage of killed bacteria in the present study was over 80% (Table 1). The results indicate that the NaOCl effect was short lasting, whereas the sealer and the combined sealer-dentin effect continued up to 30 days. Thus, bacteria still survived after the treatments. Sedgley et al (29) reported that *E. faecalis* can survive long-term entombment in root canals without additional nutrients and maintained viability for 12 months *ex vivo*. Hence, it would be interesting to study the survival of *E. faecalis* for even longer times after exposure to different disinfectants and other antimicrobial agents.

A limitation of this study is that only a single species was used in the model. A more common situation clinically would be the presence of a polymicrobial biofilm by several different types of bacteria. In such a situation, the interaction between different species is likely to impact the behavior of the biofilm.

In conclusion, the results of the present study indicate that the sequential use of NaOCl and root canal sealers kills more bacteria in infected dentin than either one of them used alone. MTA Fillapex exhibited the highest effectiveness against *E. faecalis* both when used alone or after NaOCl although the difference to BC Sealer or AH Plus was small.

Acknowledgments

Tianfeng Du and Zhejun Wang contributed equally to this work.

Supported by National Natural Science Foundation of China (grant no. 81300904), Canada Foundation for Innovation (CFI fund, project number 32623), and start-up funds from the Faculty of Dentistry, University of British Columbia, Canada.

The authors deny any conflicts of interest related to this study.

References

1. Moller AJ, Fabricius L, Dahlen G, et al. Influence on periapical tissues of indigenous oral bacteria and necrotic pulp tissue in monkeys. *Scand J Dent Res* 1981;89:475–84.
2. Cook J, Nandakumar R, Fouad AF. Molecular- and culture-based comparison of the effects of antimicrobial agents on bacterial survival in infected dentinal tubules. *J Endod* 2007;33:690–2.
3. Haapasalo M, Wang Z, Shen Y, et al. Tissue dissolution by a novel multisonic ultrasonic cleaning system and sodium hypochlorite. *J Endod* 2014;40:1178–81.
4. Waltimo T, Trope M, Haapasalo M, Orstavik D. Clinical efficacy of treatment procedures in endodontic infection control and one year follow-up of periapical healing. *J Endod* 2005;31:863–6.

5. Haapasalo M, Orstavik D. *In vitro* infection and disinfection of dentinal tubules. *J Dent Res* 1987;66:1375–9.
6. Love RM. Invasion of dentinal tubules by root canal bacteria. *Endod Topics* 2004;9:52–65.
7. Akpata ES, Blechman H. Bacterial invasion of pulpal dentin wall *in vitro*. *J Dent Res* 1982;61:435–8.
8. Nagayoshi M, Kitamura C, Fukuizumi T, et al. Antimicrobial effect of ozonated water on bacteria invading dentinal tubules. *J Endod* 2004;30:778–81.
9. Heling I, Chandler NP. The antimicrobial effect within dentinal tubules of four root canal sealers. *J Endod* 1996;22:257–9.
10. Zapata RO, Bramante CM, Moraes IG, et al. Confocal laser scanning microscopy is appropriate to detect viability of *Enterococcus faecalis* in infected dentin. *J Endod* 2008;34:1198–201.
11. Ma J, Wang Z, Shen Y, Haapasalo M. A new noninvasive model to study the effectiveness of dentin disinfection by using confocal laser scanning microscopy. *J Endod* 2011;37:1380–5.
12. Wang Z, Shen Y, Haapasalo M. Effectiveness of endodontic disinfecting solutions against young and old *Enterococcus faecalis* biofilms in dentin canals. *J Endod* 2012;38:1376–9.
13. Du T, Wang Z, Shen Y, et al. Effect of long-term exposure to endodontic disinfecting solutions on young and old *Enterococcus faecalis* biofilms in dentin canals. *J Endod* 2014;40:509–14.
14. Wang Z, Shen Y, Ma J, Haapasalo M. The effect of detergents on the antibacterial activity of disinfecting solutions in dentin. *J Endod* 2012;38:948–53.
15. Arias-Moliz MT, Ordinola-Zapata R, Baca P, et al. Antimicrobial activity of a sodium hypochlorite/etidronic acid irrigant solution. *J Endod* 2014;40:1999–2002.
16. Wang Z, Shen Y, Haapasalo M. Dentin extends the antibacterial effect of endodontic sealers against *Enterococcus faecalis* biofilms. *J Endod* 2014;40:505–8.
17. Stuart CH, Schwartz SA, Beeson TJ, Owatz CB. *Enterococcus faecalis*: its role in root canal treatment failure and current concepts in retreatment. *J Endod* 2006;32:93–8.
18. Kayaoglu G, Orstavik D. Virulence factors of *Enterococcus faecalis*: relationship to endodontic disease. *Crit Rev Oral Biol Med* 2004;15:308–20.
19. Hamama HH, Yiu CK, Burrow MF. Viability of intratubular bacteria after chemomechanical caries removal. *J Endod* 2014;40:1972–6.
20. Shen Y, Stojicic S, Haapasalo M. Bacterial viability in starved and revitalized biofilms: comparison of viability staining and direct culture. *J Endod* 2010;36:1820–3.
21. Shen Y, Stojicic S, Haapasalo M. Antimicrobial efficacy of chlorhexidine against bacteria in biofilms at different stages of development. *J Endod* 2011;37:657–61.
22. Parmar D, Hauman CH, Leichter JW, et al. Bacterial localization and viability assessment in human *ex vivo* dentinal tubules by fluorescence confocal laser scanning microscopy. *Int Endod J* 2011;44:644–51.
23. Zhou H, Du T, Shen Y, et al. *In vitro* cytotoxicity of calcium silicate-containing endodontic sealers. *J Endod* 2015;41:56–61.
24. Hess D, Solomon E, Spears R, He J. Retreatability of a bioceramic root canal sealing material. *J Endod* 2011;37:1547–9.
25. Pizzo G, Giammanco GM, Cumbo E, et al. *In vitro* antibacterial activity of endodontic sealers. *J Dent* 2006;34:35–40.
26. Zhang H, Shen Y, Ruse ND, Haapasalo M. Antibacterial activity of endodontic sealers by modified direct contact test against *Enterococcus faecalis*. *J Endod* 2009;35:1051–5.
27. Zehnder M, Waltimo T, Sener B, Soderling E. Dentin enhances the effectiveness of bioactive glass S53P4 against a strain of *Enterococcus faecalis*. *Oral Surg Oral Med Oral Pathol Oral Radiol Endod* 2006;101:530–5.
28. Zhang H, Pappen FG, Haapasalo M. Dentin enhances the antibacterial effect of mineral trioxide aggregate and bioaggregate. *J Endod* 2009;35:221–4.
29. Sedgley GM, Lennan SL, Appelbe OK. Survival of *Enterococcus faecalis* in root canals *ex vivo*. *Int Endod J* 2005;38:735–42.