



Evanesce[™]
Nano-Enhanced
Universal Restorative

Strong
Simple
Beautiful

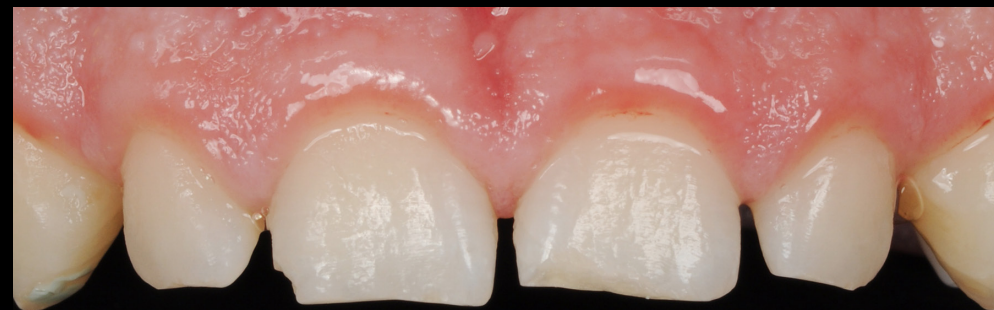


Clinician's Choice[®]

Designed for better dentistry.



“ Developing detailed morphology on anterior restorations is easier with Evanesce due to its no slump handling. ”



Case: Anterior Build-Up & Shade Change
Shades: Evanesce BL3 and Enamel White
Dentistry and photography courtesy of Marcos Vargas, BDB, DDS, MS

Evanesce™

Nano-Enhanced Universal Restorative

A Complete Restorative System

Strong. Simple. Beautiful.

Evanesce™ is a nano-enhanced universal restorative composite designed to make all composite restorations more strong, simple, and beautiful. **Evanesce** is ideal for both single shade restorations as well as multi-shade layering techniques to create the ultimate esthetic result. Regardless of case complexity, **Evanesce** provides a wide range enamel, universal and dentin shades as well as 3 non-VITA shades called Enamel FX shades, which allow you to build virtually any depth of translucency into your restoration, resulting in beautiful esthetics everytime.





“ The Evanesce composite/tooth margins now blend flawlessly and easily with the natural esthetics of the tooth. ”



Case: Class IV
Shades: Evanesce A2 Universal, Enamel FX Clear, Tints & Opaquers
Dentistry and photography courtesy of Danièle Larose, DMD, AAACD



Natural Esthetics Made Simple

“The Evanesce Effect”

Designed with unique nano pigments and a proprietary process to optimize the reflective and refractive index of both fillers and resin, **Evanesce** achieves the ultimate in natural-looking esthetics – with margins that simply disappear. For more complex cases, **Evanesce** often requires fewer layers of composite, making it a more simple system to use every day and with every patient.

evanesce

verb [ev-uh-nes]

1. to disappear gradually; vanish; fade away

Evanesce[™]
Nano-Enhanced Universal Restorative

 **Clinician's Choice**[®]
Designed for better dentistry.



A Truly Universal Composite

Not all composites allow for easy manipulation. **Evanescence** Universal Restorative provides exceptional handling, making all cases easier to perform.

For Anterior Restorations

While the handling properties of composite differ when placing an anterior restoration as opposed to restoring a posterior tooth, rheological modifiers present in **Evanescence** provide a unique handling experience, allowing the final contour to be established prior to curing, and resulting in reduced finishing time. The ability to feather-edge a margin with confidence, to shape and sculpt a restoration, establish margins, lobes, ridges and grooves, and to allow the clinician to carefully evaluate before polymerization without the fear of slumping is integral to an efficient, esthetic restoration that requires little adjustment. Margins can be thinned out over the esthetic zone, producing better blending with the natural tooth.

“ The Evanescence system rivals the esthetics of porcelain restorations and mimics the beauty of natural tooth structure. ”

Case: Class IV Composite Restoration
Shades: Evanescence Enamel FX Incisal, A1 Dentin, B1 Enamel
Dentistry and photography courtesy of David Chan, DMD, AAACD



Evanescence[™]
Nano-Enhanced Universal Restorative

 **Clinician's Choice**[®]
Designed for better dentistry.



Less Finishing Time Outstanding Results

For Posterior Restorations

Evanesce exhibits excellent compressive strength which is crucial for long-lasting posterior restorations. Clinicians appreciate the firm handling properties of **Evanesce**, making Class I and II restorations more efficient and predictable. Compared to bulk-fill composites, **Evanesce** can be packed more effectively into the proximal box, providing the ideal foundation for tight interproximal contacts. **Evanesce** will not stick to your instrument — eliminating composite pull back and air bubbles that can result in post-operative sensitivity and microleakage. With **Evanesce**, margins disappear and having the ability to sculpt perfect marginal ridges and occlusal inclines results in less finishing time, yet with consistent, outstanding esthetic results.

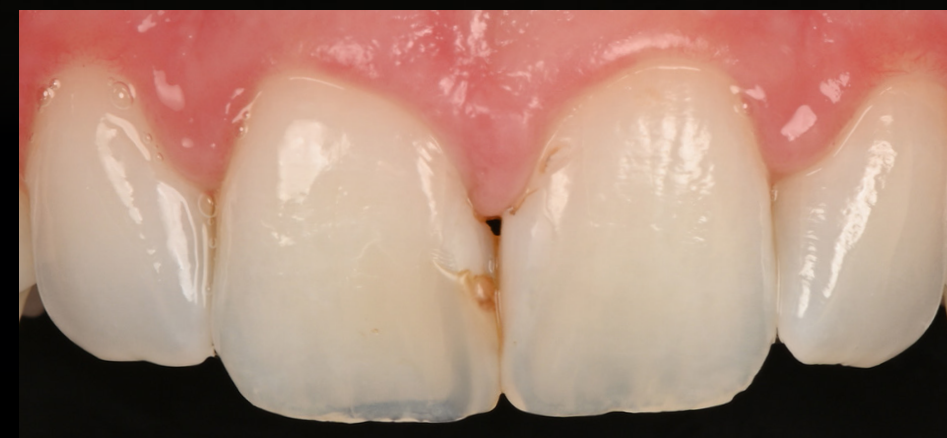
“ For posterior cases, Evanesce packs and sculpts well with zero slump and no pullback from contact areas. ”



Case: Class I
Shade: Evanesce A2 Enamel
Dentistry and photography courtesy of Danièle Larose, DMD, AAACD

Evanesce[™]
Nano-Enhanced Universal Restorative

 **Clinician's Choice**[®]
Designed for better dentistry.



Case: Diastema Closure
Shade: Evanesce Enamel FX White

Dentistry and photography courtesy of Marcos Vargas, BDB, DDS, MS

Evanesce™ *FX*

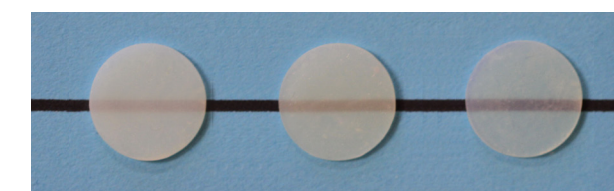
Evanesce FX Shades (Non-VITA)

Matching Anterior Translucence

Many teeth exhibit varying degrees of translucency, which can pose a challenge to match with traditional VITA shaded composite. These types of cases can be small, such as incisal chips or larger such as a diastema closures. Further, many restorative cases such as through and through Class IV or Class III restorations with translucent adjacent teeth require specialty shades to be placed within the layers of dentin, universal or enamel shades of composite in a layering technique. If you are challenged with matching translucent teeth, **Evanesce Enamel FX** shades are the answer.

The **Evanesce** system includes 3 non-VITA shaded composite Enamel FX shades which allow you to match virtually all degrees of translucent teeth commonly seen in today's dental practice.

FX White *FX* Incisal *FX* Clear



Evanesce Enamel *FX* White

- 70% opacity
- Reinforced microfill
- Create lingual shelf and small incisal defects, low-moderate translucency
- Available in 0.3g single dose or 3g syringe

Evanesce Enamel *FX* Incisal

- 60% opacity
- Nano-hybrid
- Incisal placement, medium translucency
- Available in 0.3g single dose or 4g syringe

Evanesce Enamel *FX* Clear

- 50% opacity
- Reinforced microfill
- Enhance facial lobes, thin clear coat, high translucency
- Available in 0.3g single dose or 3g syringe

ANTERIOR



POSTERIOR



Dentistry and photography courtesy of David Chan, DMD, AAACD



Dentistry and photography courtesy of Fred Peck, DDS, FAACD

Evanescence™ Silk™

Two Formulas

For Clinical Success

Many dentists prefer a more silky smooth viscosity, if this is your preference, choose **Evanescence™ Silk™**. **Evanescence Silk** maintains all of the outstanding features of the **Evanescence** formula including beautiful esthetics, ideal shade match and blend with natural tooth structure, high strength and a fast, high shine polish. **Evanescence Silk** has a silky smooth consistency, ideal for both anterior and posterior restorations. Available in the most popular 6 VITA shades in a universal, 85% opacity, **Evanescence Silk** is ideal for single shade restorations or can be used in conjunction with the **Evanescence** dentin, enamel and Enamel FX non-VITA shades to create outstanding esthetic restorations. The only real difference is handling properties.

Evanescence Silk

SILK SHADES (85% Opacity)					
A1 UX	A2 UX	A3 UX	A3.5 UX	B1 UX	BL1 UX

Available in 0.3g Single Dose only





“ Evanesce Flow has excellent optical properties resulting in an ideal blend with natural tooth structure. ”



Case: Class V Restoration
Shade: Evanesce Flow A1 Universal
 Dentistry and photography courtesy of Marc Geissberger, DDS, MA, BS, CPT

Evanesce™ Flow

Flowable Restorative

Exceptional Control, Versatility, Beautiful Esthetics

Evanesce™ Flow provides all of the esthetic and optical qualities of the **Evanesce** paste formula including the ability to blend in and disappear into surrounding dentition with an excellent shade match, a high degree of radiopacity and a fast, outstanding polish. What sets **Evanesce Flow** apart from other flowable materials is its thixotropic viscosity which provides outstanding control. **Evanesce Flow** will not slump when placed on a vertical surface such as Class V restorations. **Evanesce Flow** is highly filled for strength, making it ideal for temporary veneer restorations. You can also use **Evanesce Flow** as a base/liner in Class I and II restorations or as a stand alone restorative for small enamel defects and occlusal grooves. **Evanesce Flow** shades are designed to meet the needs of most restorative situations with various opacities including enamel (80%), universal (85%) and dentin (90%).

Evanesce Flow Shades and Opacities

ENAMEL SHADES (80% Opacity)					
A1	A2	A3	B1		
UNIVERSAL SHADES (85% Opacity)					
A1	A2	A3	A4	B1	BL1
DENTIN SHADES (90% Opacity)					
			A2		

Available in 1.7g Syringes

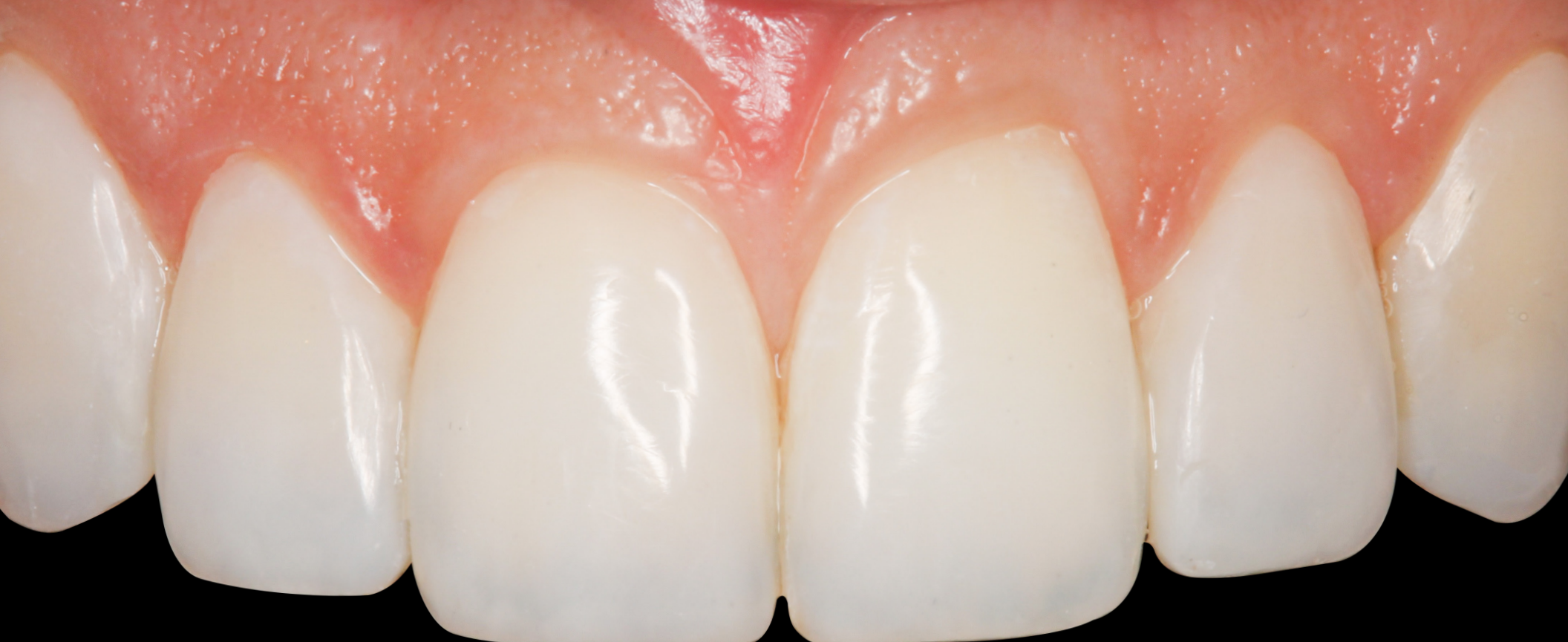


A.S.A.P.[®]

All Surface Access Polishers

A Fast, Beautiful Polish

SMILE! A completed restoration exhibiting a high gloss polish, mimicking that of the surrounding natural dentition is not only a goal for the clinician – but also essential to the patient. Composite polishing should be easy and fast. Formulated using a proprietary process to optimize the refractive index of its unique nano pigments and fillers, you'll be amazed with how **Evanesce** polishes. Truly amazing esthetics can be easily achieved with **Evanesce**, when used in conjunction with **A.S.A.P.[®] All Surface Access Polishers**. You can expect an immediate natural-looking high luster finish that mirrors the surrounding tooth structure, and even porcelain, something many composites fail to accomplish. **Evanesce's** ability to retain this high luster polish is equalled by its outstanding resistance to wear ensuring that your anterior and posterior composite restorations maintain their esthetics for as long as your anterior restorations do.



“ A.S.A.P. Polishers save chair time by quickly polishing porcelain and composite restorations in less than a minute. ”



Dentistry and photography courtesy of Danièle Larose, DMD, AAACD

A.S.A.P.[®]

All Surface Access Polishers



A.S.A.P.[®]

Diamond Polishing Brushes



A.S.A.P.[®] Dailies

All Surface Access Diamond Polishers



Every Restoration. Every Patient.

Evanescence™
Nano-Enhanced Universal Restorative

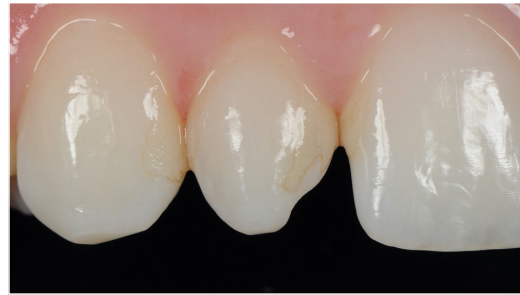
Clinician's Choice®
Designed for better dentistry.

FLUOROSIS



Dentistry and photography courtesy of David Chan, DMD, AAACD

PEG LATERAL



Dentistry and photography courtesy of Marcos Vargas, BDB, DDS, MS

CLASS IV + BLACK TRIANGLE



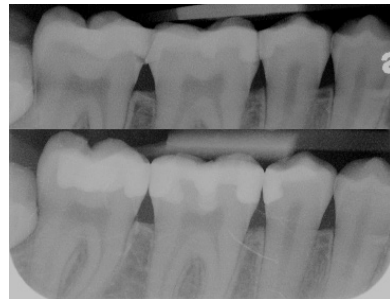
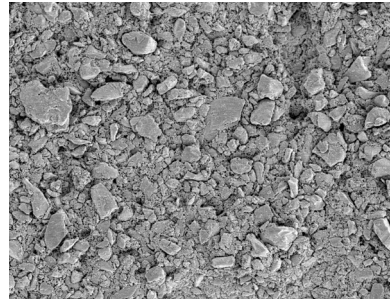
Dentistry and photography courtesy of Fred Peck, DDS, FAACD

INCISAL REPAIR



Dentistry and photography courtesy of Bob Margeas, DDS

Technical Profile



	Evanesce	Evanesce Silk	Evanesce Flow
Filler Content by Weight	82%	82%	62%
Average Filler Particle Size	0.6µm	<1µm	0.5µm
Shrinkage in water (>24 hrs)	2.0%	2.3%	NA
Flexural Strength	140 MPa	140 MPa	125 MPa
Flexural Modulus	10.4 GPa	10.4 GPa	5600 MPa
Compressive Strength	340 MPa	340 MPa	280 MPa
Radiopacity	250% Al.	200% Al.	150% Al.
Surface Roughness	0.07µm	0.07µm	NA

Evanesce™
Nano-Enhanced Universal Restorative

Clinician's Choice®
Designed for better dentistry.



Powered by
Hands-OnLine™



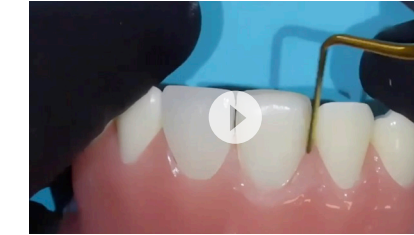
Dr. Bob Margeas talks about Evanesce™ Nano-Enhanced Universal Restorative Composite

with Bob Margeas, DDS



Using Evanesce™ Flow in Class V Restorations

with Marc Geissberger, DDS, MA, BS, CPT



Hiding Fracture Lines with Evanesce™ Universal Composite

with David Chan, DMD, AAACD



Creating Translucence in Anterior Composite Restorations

with Bob Margeas, DDS



Clinical Articles



Ultimate Aesthetics Using Non-VITA Shades for Diastema Closure

with Marcos Vargas, BDB, DDS, MS



Simple, Beautiful, and Predictable Class V Restorations

with Marc Geissberger, DDS, MA, BS, CPT



Facially Driven, Single Opacity Composite Veneers

with Mark Bowes, BDS Rand



Success and Predictable Results with Anterior Composites Every Single Time

with David Chan, DMD, AAACD



Evanesce Shade & Opacities

Shades

Evanesce™

ENAMEL (80% Opacity)												
A1E	A2E	A3E	A3.5E	B0.5E	B1E	B2E						
UNIVERSAL (85% Opacity)												
A1U	A2U	A3U	A3.5U	A4U	B0.5U	B1U	B2U	C1U	C2U	C3U	BL1U	BL3U
DENTIN (90% Opacity)												
A1D	A2D	A3D	A3.5D	B1D	C4D							

Evanesce™ Silk

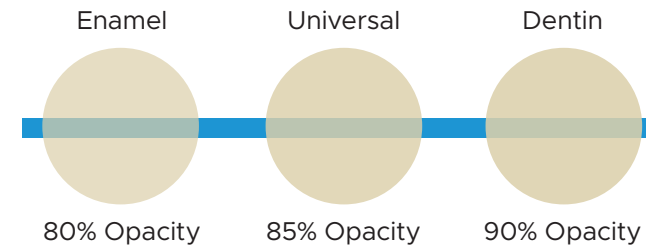
UNIVERSAL (85% Opacity)					
A1UX	A2UX	A3UX	A3.5UX	B1UX	BL1UX

Evanesce™ FX (Non-VITA)

FX White (70% Opacity)			FX Incisal (60% Opacity)			FX Clear (50% Opacity)		
------------------------	--	--	--------------------------	--	--	------------------------	--	--

Available Sizes ● 0.3g Single Dose ● 3g Syringes ● 4g Syringes

Opacities



Enamel A1E Universal A1U Dentin A1D



Evanesce™
Nano-Enhanced Universal Restorative

Ordering Information

Evanesce™	EVANESCE 4 g SYRINGES A1 Universal (321501) A2 Universal (321502) A3 Universal (321503) A3.5 Universal (321504) B1 Universal (321505) B2 Universal (321522) C2 Universal (321506) A1 Enamel (321507) A2 Enamel (321508) B1 Enamel (321511) A2 Dentin (321517)	EVANESCE 20-PACK 0.3 g SINGLE DOSE A1 Universal (322501) A2 Universal (322502) A3 Universal (322503) A3.5 Universal (322504) B1 Universal (322506) C2 Universal (322509)	EVANESCE 10-PACK 0.3 g SINGLE DOSE A4 Universal (322505) B0.5 Universal (322536) B2 Universal (322507) C1 Universal (322508) C3 Universal (322510) BL1 Universal (322511) BL3 Universal (322513) A1 Enamel (322514) A2 Enamel (322515) A3 Enamel (322516) A3.5 Enamel (322517) B0.5 Enamel (322537) B1 Enamel (322518) B2 Enamel (322519) A1 Dentin (322520) A2 Dentin (322521) A3 Dentin (322522) A3.5 Dentin (322523) B1 Dentin (322524) C4 Dentin (322526)
	Evanesce™ FX EVANESCE FX SYRINGES Enamel FX Clear 3 g Syringe (321513) Enamel FX White 3 g Syringe (321514) Enamel FX Incisal 4 g Syringe (321515)	EVANESCE FX 10-PACK 0.3 g SINGLE DOSE Enamel FX Clear (322533) Enamel FX White (322534) Enamel FX Incisal (322535)	
Evanesce™ Silk™	EVANESCE SILK 20-PACK 0.3 g SINGLE DOSE A1UX (323563) A2UX (323564) A3UX (323562) A3.5UX (323565) B1UX (323567) BL1UX (323569)	Evanesce™ Flow EVANESCE FLOW 1.7 g SYRINGES A1 Universal (323517) A2 Universal (323518) A3 Universal (323519) A4 Universal (323520) B1 Universal (323521) BL1 Universal (323525) A1 Enamel (323501) A2 Enamel (323502) A3 Enamel (323503) B1 Enamel (323505) A2 Dentin (323511)	
	A.S.A.P.™ All Surface Access Polishers A.S.A.P. STARTER KIT (130917) Contains: 3 x Pre-polishers Small, 3 x Pre-polishers Large, 3 x Final High Shine Polishers Small, 3 x Final High Shine Polishers Large A.S.A.P. REFILL 6-PACK Contains: 3 x Pre-polishers, 3 x Final High Shine Polishers Small (130913) Large (130912) A.S.A.P. PRE-POLISHER 3-PACK Small (131011) Large (131012) A.S.A.P. FINAL HIGH SHINE POLISHER 3-PACK Small (132013) Large (132014)		A.S.A.P.™ Diamond Polishing Brushes A.S.A.P. DIAMOND POLISHING BRUSHES POLISHING BRUSH AND WHEEL SYSTEM KIT (133155) Contains: Pre-polisher Wheels (2 x Large, 2 x Small) 4 Final High Shine Wheels (2 x Large, 2 x Small) 2 Pre-polisher Diamond Brushes, 2 Final Polisher Diamond Brushes A.S.A.P. DIAMOND POLISHING BRUSHES PRE-POLISHER REFILL 3-PACK (133156) A.S.A.P. DIAMOND POLISHING BRUSHES FINAL POLISHER REFILL 3-PACK (133157) A.S.A.P. DIAMOND POLISHING BRUSHES 6-PACK (133158) Contains: 3 x Pre-polishers, 3 x Final Polisher A.S.A.P. DAILIES 50-PACK (133160) 50 Polishers (25 x Pre-polishers, 25 x Final High Shine Polishers)

Exclusively Distributed in Canada by:



1-800-265-3444
clinicalresearchdental.com



Experience Evanesce™ for yourself

Scan the QR code to request
an in-office demonstration for
you and your team

