

# Cling2<sup>®</sup>

## Resin Optimized Temporary Cement



Optimized for performance, **Cling2<sup>®</sup>** is an easy to use temporary cement providing superior adhesion and an excellent marginal seal. Cling2 is the perfect choice for cementing provisional crowns, bridges, inlays, and onlays.

- Cling2 sets quickly (60-90 seconds) and easily peels off the preparation margins in seconds for chairside efficiency.
- Cling2's carboxylate resin and non-eugenol, zinc oxide based formula is bacteriostatic for exceptional tissue health and patient comfort.
- Temporaries cemented with Cling2 simply won't come off until you need them to, and when it's time for removal, the temporary releases easily with minimal clean-up of the preparation.

### Simple Placement



Cling2 sets in 60 to 90 seconds for easy placement.

### Easy Clean-Up



As Cling2 sets, it easily peels away from margins.

### Superior Adhesion



Once set, Cling2's resin optimized formula provides extra adhesion to prevent premature dislodgement.

### Efficient Removal



When you are ready, Cling2 releases easily and usually stays in the prosthesis making clean-up a breeze. The remaining Cling2 on preparation flakes off easily.

### Exceptional Tissue Health



Cling2's carboxylate resin and non-eugenol, zinc oxide formula is antibacterial, resulting in exceptional tissue health.

## CLINICAL TECHNIQUE

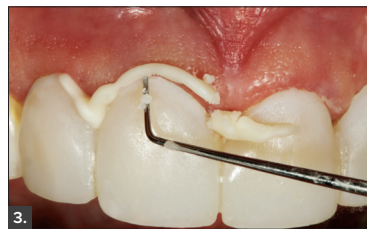
*Dentistry and photography courtesy of Robert Lowe, DDS.*



1. Inspire™ provisionals are loaded with Cling2.



2. The temporary restoration is inserted and held in place for 60 to 90 seconds.



3. Cling2 effortlessly peels off margins.



4. Cling2's translucency makes it the perfect choice for anterior restorations. Here, the provisionals demonstrate ideal esthetics and tissue health is maintained.

#### CLING2 5 mL SYRINGE 158900

Contains: 1 x 5 mL syringe (base & catalyst), mixing tips, instructions

5 mL Mixing Tips 25-pack 153825  
5 mL Mixing Tips 100-pack 153810

#### CLING2 25 mL CARTRIDGE 158925

Contains: 1 x 25 mL syringe (base & catalyst), mixing tips, instructions

25 mL Mixing Tips 24-pack 153830  
25 mL Mixing Tips 96-pack 153831



“With a quick set and ideal retention, Cling2 is my go-to provisional cement.”

- Bob Margeas, DDS

