

BlueView™ VariStrip™

Contoured Anterior Matrices



The Blue View™ VariStrip™ is a revolutionary contoured anterior matrix that provides the optimum curvature and band height for virtually every anterior restoration. The 0.0020" thin plastic anatomical strip is tapered from one end to the other. You can place the strip interproximally and then slide it until the tooth height is perfectly matched. The pre-contoured shape easily recreates the occluso-gingival anatomy, avoiding flat embrasures.

Curved Form: Provides the optimum curvature for unbeatable interproximal anatomy.

Variable Height: Tapered design allows you to slide the band interproximally until the tooth height is perfectly matched.

Blue Tint: Provides contrast between matrix and tooth structure without compromising composite polymerization.

BLUEVIEW VARISTRIP 202810
100-Pack

BlueView™ Transparent Cervical Matrices

Fill, press, cure. Class V's are hassle-free when you use Blue View™ Transparent Cervical Matrices. Anatomical and flexible, our cervical matrices eliminate the air-inhibited layer and reduce your finishing time while protecting the restoration from contamination. Faster, more profitable Class V's with outstanding aesthetics will make both you and your patients smile.

Flexible

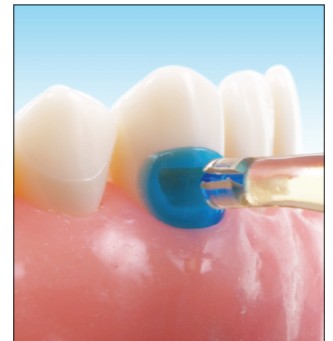
- Adapts to individual anatomy for improved contours
- Use it to directly compact the composite into the restoration
- Thin edges allow excess composite to flow out for improved anatomy

Convenient

- Protects the restoration from contamination
- Eliminates time spent hand sculpting
- Eliminates air-inhibited layer
- Reduces finishing time
- 6 sizes for a perfect fit for posterior and anterior

Blue Tint

- Provides contrast between matrix and tooth structure
- Does not compromise composite polymerization

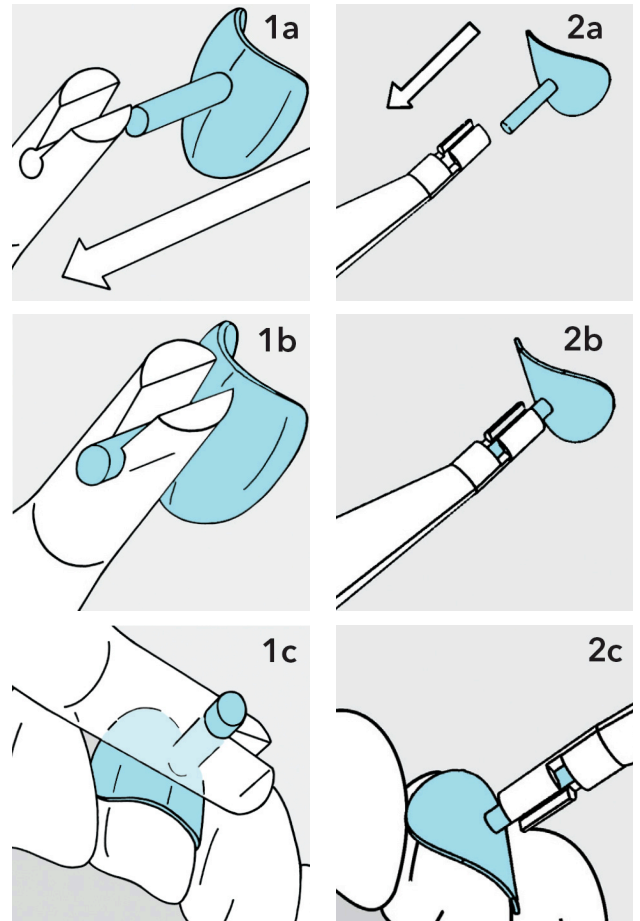


BlueView™

Transparent Cervical Matrices

Instructions

- Use the white Gingival Retractor to provide access and isolation, if the restoration is very close to the gingiva or even slightly sub-gingival.
- Prepare the tooth.
- Select the appropriate matrix for the tooth being restored.
- Snap the matrix stem into the Placement Instrument.
- The Placement Instrument is designed to hold the matrix in either a perpendicular position (fig. 1) or an inline position (fig. 2) to provide the most convenient application angle.
- Apply your preferred restorative materials according to the manufacturer's instructions.
- Use the Blue View Transparent Cervical Matrix to compress and subsequently shape the final composite increment, keeping it pressed against the restoration while light curing. The airinhibited layer will be eliminated.
- Minimal finishing and polishing will complete the restoration.



ASSORTED KIT WITH INSTRUMENT 240-REFILLS 202819

Includes 35 each of KCMA 10, KCMA 20, KCMA 30, KCMA 40, 50 each of KCMA 60 and KCMA 70 and 1 Placement Instrument

100-PACK REFILLS

KCMA 10	202811
KCMA 20	202812
KCMA 30	202813
KCMA 40	202814
KCMA 60	202816
KCMA 70	202817
Extra Placement Instrument	202818