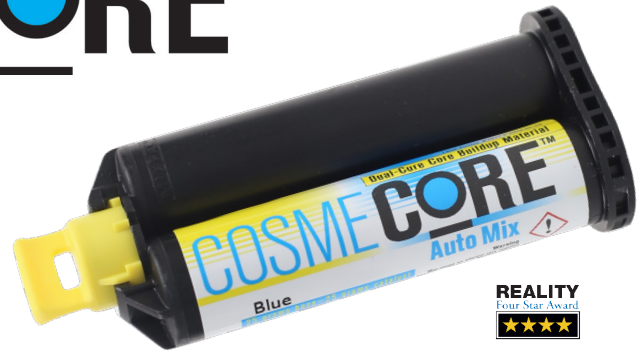


COSMECORE



Core Material That Doesn't Need a Matrix

COSMECORE™ is a dual-cure core build up material with exceptional mixing and handling properties. You'll love the smooth dispensing from the 50 g automix cartridge, which provides a bubble-free mix every time, as well as the convenience of direct placement from cartridge to preparation. Cosmecore stays where you place it and is highly resistant to slumping, unlike other automix core materials. You can also add to it without utilizing a bonding agent.

Cuts Cleanly. Preps Like Dentin.

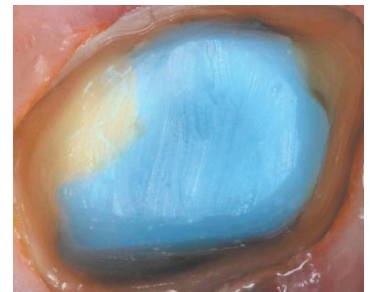
Once cured, either light-activated or self-cure, resin-based Cosmecore becomes extremely rigid with a high compressive strength of 300 MPa – giving you (and your patient's restoration) long term strength and durability. But what's best about Cosmecore is that it cuts cleanly and preps like dentin yet, because of its three versatile shades, is easily distinguishable from tooth structure. While trimming, Cosmecore will not gouge or ditch, allowing you to easily shape the ideal preparation in less time.

Three Shades

Available in 3 shades, choose from A2 for anterior esthetic cases; White (or A2) for ceramic restorations; and Blue for under PFMs.

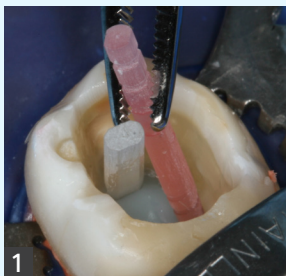


Injection of Cosmecore.
Cosmecore's excellent flowability makes dispensing easy.

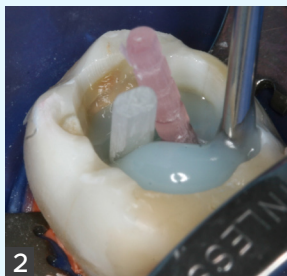


Final preparation for crown.

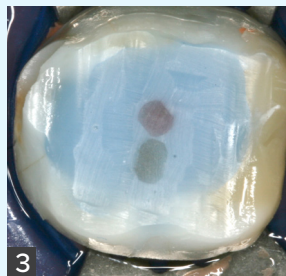
CLINICAL TECHNIQUE



1 Ellipson post in distal ovoid canal and a pre-bonded Macro-Lock Illusion X-RO inserted into Cosmecore.



2 An 18 gauge Endo-Eze Tip is used on a Skini Syringe to build-up the core with Cosmecore.



3 Core and posts trimmed, with the tooth ready for a full coverage restoration.

Dentistry and photography courtesy of Dr. Manfred Friedman

Important: For best results, we recommend COSMECORE be used in conjunction with a dual-cure, 4th generation adhesive or a low acidic, 5th generation adhesive. Sixth and seventh generation adhesives are not recommended.

COSMECORE is very economical – one core build up will pay for the entire cartridge.

COSMECORE is designed to fit a mini 2:1 gun

COSMECORE INDIVIDUAL CARTRIDGE

A2 (50g) 513901
White (50 g) 513902
Blue (50 g) 513903

All come with 10 mixing tips and 10 intraoral tips

COSMECORE 8 g SYRINGE

A2 (8 g) 513801
White (8 g) 513802
Blue (8 g) 513803

COSMECORE GUN 513100