

# Affinity™

## Hydroactive Impression Material



Affinity™ Hydroactive Impression Material is clinically proven to provide consistently accurate impressions utilizing superior 3rd generation chemistry, technique-designed viscosities, as well as doctor and patient-friendly work and set times.

### Superior Chemistry

Affinity's chemistry combines a unique branched resin, more refined filler, and an even distribution of surfactant. These three components give Affinity several distinct advantages over other impression materials.

### Ultra High Tear Strength

Regardless of the viscosity, Affinity's branched resin products three-dimensional cross-linking which results in extremely high tear strength, this ensures you won't experience tearing upon removal of the impression.

### Technique-Designed Viscosities

Affinity goes beyond offering light body, medium body and heavy body viscosities. All Affinity viscosities are designed to maximize accuracy and to prevent common clinical challenges. Affinity offers three unique light bodies, each designed with specific technique preferences in mind. Affinity tray materials flow better than other tray materials, and are designed to prevent over-displacement of the light body, to ensure you capture impression accuracy of less than 2 microns. You'll also notice a seamless blend between the light body and Affinity tray materials in every impression. Use Affinity Heavy Body for full-arch impressions and Affinity InFlex for the dual-arch impression technique.

### Doctor/Patient-Friendly Work & Set Times

Dentists will benefit from Affinity's long working time, allowing you to syringe around multiple preparations. Patients will appreciate Affinity's heat activated, quick intraoral set time which minimizes the time the impression stays in the month.

### “Technique Designed” Working & Set Times at a Glance

| AFFINITY Viscosity                        | LIGHT BODY HF (High Flow) |             | LIGHT BODY RF (Regular Flow) |             | LIGHT BODY XL (Xtra Light Flow) | MONOPHASE | HEAVY BODY  |             | INFLEX MAXIMUM SUPPORT TRAY MATERIAL |             | QUICK BITE | AFFINITY Crystal | PUTTY        |
|---|---------------------------|-------------|------------------------------|-------------|---------------------------------|-----------|-------------|-------------|--------------------------------------|-------------|------------|------------------|--------------|
|   | Regular Set               | Fast Set    | Regular Set                  | Fast Set    |                                 |           | Regular Set | Fast Set    | Regular Set                          | Fast Set    |            |                  |              |
| AVAILABLE WORKING TIME                    | 1:45 min.                 | 1:10 min.   | 1:45 min.                    | 1:10 min.   | 1:45 min.                       | 2:15 min. | 1:45 min.   | 1:10 min.   | 1:45 min.                            | 1:10 min.   | 0:15 min.  | 0:45 min.        | 1:45 min.*** |
| MINIMUM INTRAORAL SET TIME                | 2:30 min.*                | 1:45 min.** | 2:30 min.*                   | 1:45 min.** | 2:30 min.*                      | 2:45 min. | 2:30 min.*  | 1:45 min.** | 2:30 min.*                           | 1:45 min.** | 0:45 min.  | 1:30 min.        | 3:15 min.    |
| MAXIMUM TOTAL CURE TIME FROM START OF MIX | 4:15 min.                 | 2:55 min.   | 4:15 min.                    | 2:55 min.   | 4:15 min.                       | 5:00 min. | 4:15 min.   | 2:55 min.   | 4:15 min.                            | 2:55 min.   | 1:00 min.  | 2:15 min.        | 5:00 min.    |

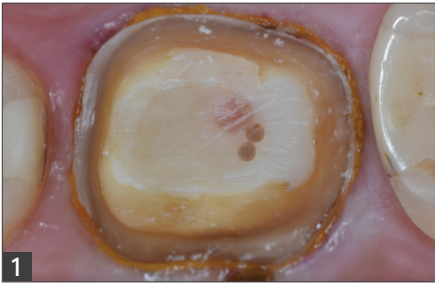
\*2:30 min. reflects the minimum intraoral set time. Our recommendation is to allow 3:00 min. for a full intraoral set.

\*\*1:45 min. reflects the minimum intraoral set time. Our recommendation is 2:00 min. for full intraoral set.

\*\*\*Available working time for Putty is in addition to a 0:30-0:45 second mix time. These procedure times reflect ideal conditions. Fluctuations in temperature and humidity may reduce or extend these times.

# DUAL-ARCH IMPRESSION USING QUAD-TRAY XTREME CLINICAL TECHNIQUE

Dentistry courtesy of Brad Carson, DDS. Photography courtesy of Gildo Santos, DDS.



1

With tissue management and hemostasis achieved, the preparation is cleaned with Detail™ Pre-Impression Cleansing Gel to remove any residual debris and hemostatic agent ensuring complete polymerization of the Affinity InFlex VPS Tray Material and Affinity Light Body HF VPS material.



2

The Affinity Light Body HF impression material is placed after the Re-Record #00 cord has been carefully removed, making sure to keep the tip submerged.



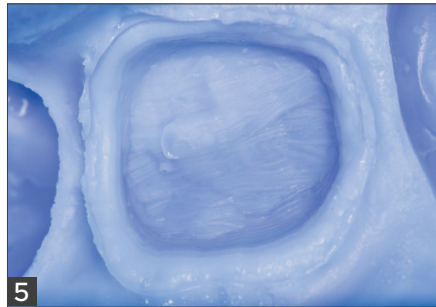
3

The Quad-Tray® Xtreme™ is placed immediately upon completing the syringing of the Light Body. The patient is asked to passively close. If no segmental bite registration has been taken prior to the impression, the patient may need to be guided into position.



4

While holding the tray by the sides, the impression is gently removed from the patient's mouth. Never torque the handle of the tray to prevent bending of the aluminum



5

The final impression showing excellent capture of the margins as well as showing that the light body was not overly displaced by the hydraulics of the InFlex. This ensures a more accurate die and



6

Final photograph showing the bonded ceramic restoration which needed virtually no adjusting interproximally and occlusally



## SPECTRUM 2-PACK

CUSTOMIZABLE BULK KITS

When you choose Affinity, you can customize your bulk pack!

Choose any number of any viscosity to make up a Spectrum Pack of 12, 18, and 36.\*

\* Excluding Putty and AFFINITY Crystal. Mixing tips not included.



|   |
|---|
| <b>AFFINITY SPECTRUM PACKS (NO TIPS)</b><br>Assorted 50 mL cartridges |
| 12-PACK 011912  |
| 18-PACK 011918  |
| 36-PACK 011936  |
| <b>CHOOSE FROM THESE AFFINITY 50 mL VISCOSITIES</b>                   |
| LIGHT BODY HF (High Flow)<br>Regular Set 014420<br>Fast Set 014425    |
| LIGHT BODY RF (Regular Flow)<br>Regular Set 014410<br>Fast Set 014415 |
| LIGHT BODY XL 014426  |
| MONOPHASE 015400  |
| HEAVY BODY<br>Regular Set 013400<br>Fast Set 013405                   |
| INFLEX<br>Regular Set 012400<br>Fast Set 012405                       |
| QUICK BITE 016400   |

|   |
|---|
| <b>AFFINITY 2-PACKS (WITH TIPS)</b><br>Contains: 2 x 50 mL cartridges, mixing tips, instructions/MSDS               |
| <b>AFFINITY CRYSTAL 021400</b>  |
| LIGHT BODY HF (High Flow)<br>Regular Set 024420<br>Fast Set 024425  |
| LIGHT BODY RF (Regular Flow)<br>Regular Set 024410<br>Fast Set 024415   |
| LIGHT BODY XL 024426  |
| MONOPHASE 025400  |
| HEAVY BODY<br>Regular Set 023400<br>Fast Set 023405   |
| INFLEX<br>Regular Set 022400<br>Fast Set 022405   |
| QUICK BITE 026400   |
| <b>DUAL PORT IMPRESSION GUN 031120</b>  |
| <b>AFFINITY PUTTY 027200</b><br>Contains: 1 x 305 mL jar catalyst, 1 x 205 mL jar base, 2 scoops, instructions/MSDS |

|   |
|---|
| <b>AFFINITY CRYSTAL 6-PACK (NO TIPS)</b><br>019916<br>Contains: 6 x 50 mL cartridges, instructions/MSDS |
| <b>AFFINITY 12-PACK (NO TIPS)</b><br>Contains: 12 x 50 mL cartridges, instructions/MSDS                 |
| <b>AFFINITY CRYSTAL 010912</b>  |
| LIGHT BODY HF (High Flow)<br>Regular Set 019522<br>Fast Set 019525                                      |
| LIGHT BODY RF (Regular Flow)<br>Regular Set 019510<br>Fast Set 019515                                   |
| LIGHT BODY XL 019526  |
| MONOPHASE 019540  |
| INFLEX<br>Regular Set 012912<br>Fast Set 012952   |
| HEAVY BODY<br>Regular Set 013912<br>Fast Set 013952   |
| QUICK BITE 016912   |

|  |
|--|
| <b>AFFINITY 2-PACKS (WITH DYNAMIC MIXING TIPS)</b><br>Contains: 2 x 120 mL cartridges, 6 dynamic mixing tips, instructions/SDS |
| INFLEX<br>Regular Set 022401<br>Fast Set 022406  |
| HEAVY BODY<br>Regular Set 023401<br>Fast Set 023406  |
| <b>AFFINITY MEGAMIX CARTRIDGES</b><br>Contains: 1 x 380 mL cartridges, instructions/SDS  |
| INFLEX<br>Regular Set 012381<br>Fast Set 012386  |
| HEAVY BODY<br>Regular Set 013381<br>Fast Set 013386  |