

ENDODONTICS

WELCOME TO THE  
**Endodontic Movement**

Prepare - Preserve - Restore



The Next Generation of Minimally Invasive RCT is Here

# Manufacturing Minimally Invasive NiTi Files since 2011

Designing products with purpose is our vision at SS White. Starting in 2009 with the development of the patented EndoGuide Endodontic Access Burs, followed by the DC Taper NiTi system in 2012 and through today with the launch of the new EXACTTaper<sup>H</sup> DC™ NiTi file system, SS White continues to show leadership in the Minimally Invasive Endodontic Movement, when others have followed.

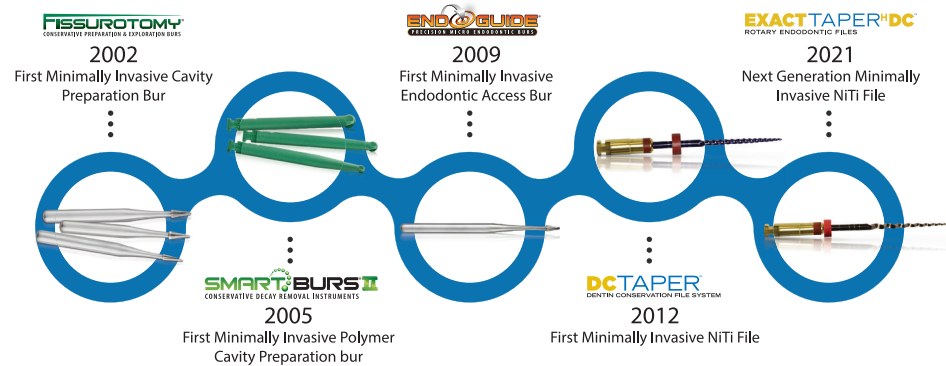
## ExactTaper<sup>H</sup> DC™

### The Next Generation of Minimally Invasive NiTi Files

Designed with cutting edge technology that offers real world application. Minimally Invasive by design, with the strength and flexibility like no other, EXACTTaper<sup>H</sup> DC™ files are by manufactured in the USA to the strictest guidelines to insure excellent consistency and performance, time after time.

#### The SS White Legacy

At the Forefront of Minimally Invasive Dentistry



#### Industry Leading Quality & Performance

Today's clinician's want a file that doesn't separate and RCT results that are less prone to fracture and failure. Introducing the newest system in the SS White line of Minimally Invasive endodontic files, EXACTTaper<sup>H</sup> DC™.

We have developed a file system that is 33% smaller than ProTaper Gold\*, yet 50.5% stronger and 264% more flexible. Is this even possible? It sure is, and better yet, you can use the same technique with EXACTTaper<sup>H</sup> DC™ files as you do with ProTaper Gold.

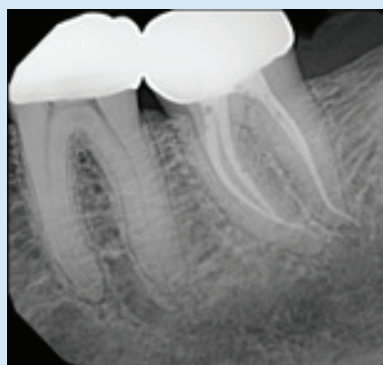
(\*Based on F2 Comparison)

Profile® & ProTaper Gold® are registered trademarks of Dentsply Sirona.

#### What Key Opinion Leaders are Saying:

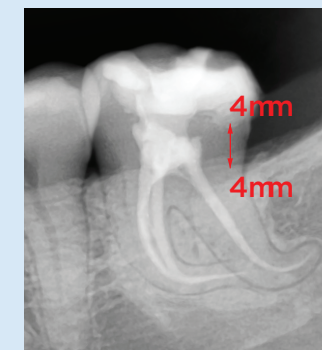
"EXACTTaper<sup>H</sup> DC™ files are a modern, minimally invasive version of ProTaper Gold® and give the clinician the advantages of dentin preservation without having to change preparation or obturation technique."

~ Dr. John Khademi  
Endodontist Durango, Colorado



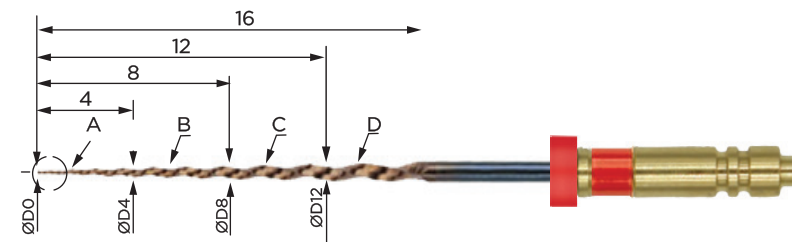
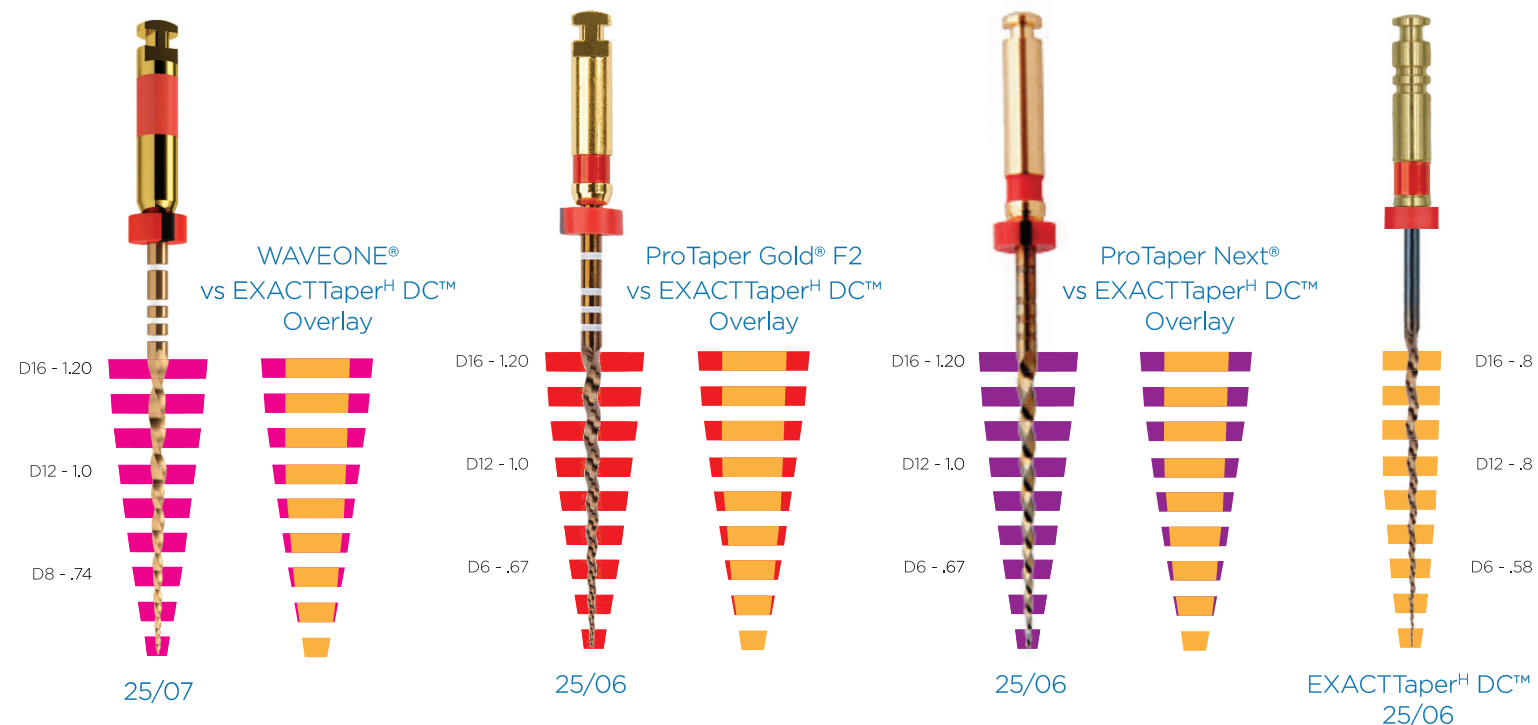
# LESS FILE MEANS Conserve More Dentin for Longer Lasting Restorations

The variable decreasing taper of the EXACTTaper<sup>H</sup> DC™ preserves more pericervical dentin when compared to other variable increasing taper files like the ProTaper Gold®. Smaller tapering in the mid and upper portion of the EXACTTaper<sup>H</sup> DC™ file results in unmatched file flexibility while providing better initial access and conservative restorative options.



Courtesy: Dr. Reza Farshey

EXACTTaper<sup>H</sup> DC™ - Removes 40% to 60% Less Tooth Structure



File	Taper 1	D0	D2	D4	D6	D8	D12	D16
DCSX	.09	.15	.33	.51	.65	.80	.80	—
DCS1	.03	.17	.22	.28	.34	.40	.50	.60
DCF1	.06	.20	.32	.44	.54	.62	.80	.80
DCF2	.06	.25	.36	.48	.58	.68	.80	.80
DCF3	.06	.30	.42	.54	.62	.71	.78	.80
DCF4	.06	.40	.51	.63	.69	.76	.80	.80

33% Smaller Maximum Flute Diameter than ProTaper Gold®, ProTaper Next® and WaveOne®\*

EXACTTaper<sup>H</sup> DC™ creates an ideal anatomical fit to the natural dimensions of the size and shape of the root canal.

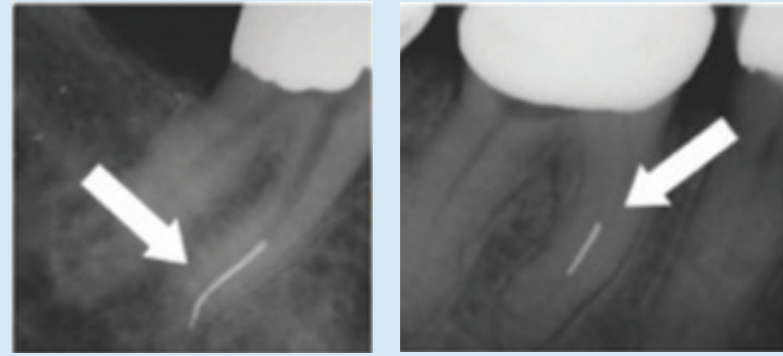
(\*Based on Size 25 File Comparison)

ProTaper Gold®, ProTaper Next® and WaveOne® are registered trademarks of Dentsply Sirona.

# NAVIGATE CURVED CANALS WITH CONFIDENCE

## File Separation the #1 Clinical Concern

Nickel-titanium (NiTi) endodontic instruments were introduced to facilitate instrumentation of curved canals because of their elasticity and flexibility over stainless-steel instruments. The standard for the strength of an endodontic file is the ability to resist fracture (separation) during the root canal shaping procedure.



Courtesy: Dr. John Khademi

A stronger file is a more efficient file. By reducing file separation, EXACTTaper<sup>H</sup> DC™ save clinicians time to focus on what matters most, creating beautiful minimally invasive root canals.

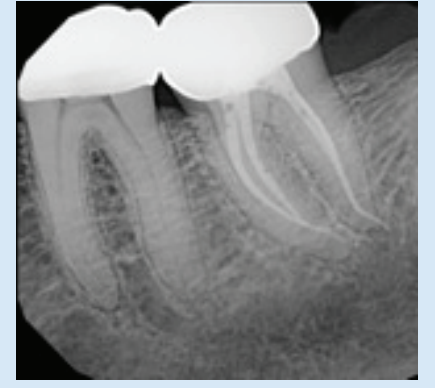
# NAVIGATE Without Constraint

Flexibility is an important property of NiTi that allows preparation of curved canals while minimizing transportation. Despite the increased flexibility, separation is still a concern.

NiTi files can still undergo fatigue failure which occurs unexpectedly without any sign of previous deformation and therefore visual inspection may not be the ideal way of evaluating nickel titanium instruments in order to prevent fracture.

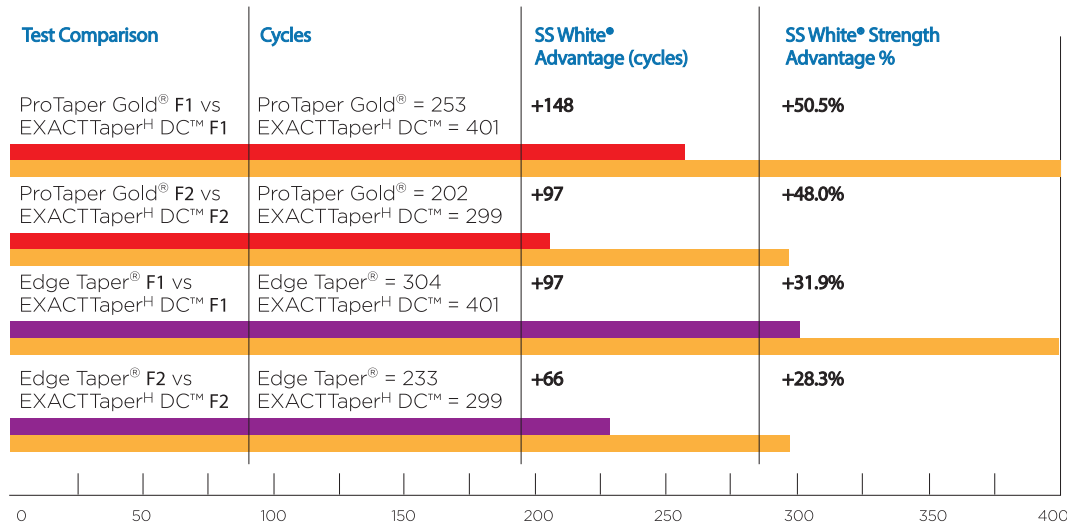


Courtesy: Dr. Reza Farshey



*"Very few files are needed to shape the canals. The flexibility on these files is simply unreal."*

- Dr. Reza Farshey  
Endodontist, Chevy Chase, Maryland

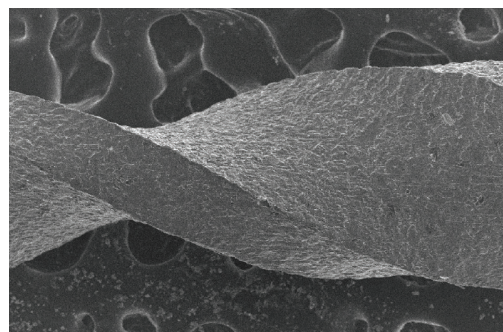


## SS White® Advantage Strength

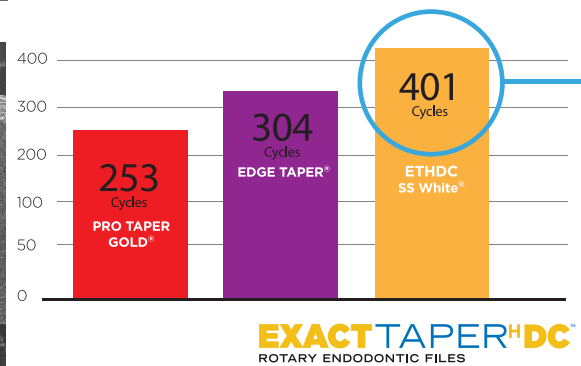
The more cycles a file can handle without fracture (separation), the greater the durability of the file and the less cost per procedure.  
(\*data on file)



## Greater Resistance TO CYCLIC FATIGUE



EdgeTaper™ is a trademarks of EdgeEndo®  
ProTaper Gold® is a registered trademarks of Dentsply Sirona



## 50.5% STRONGER

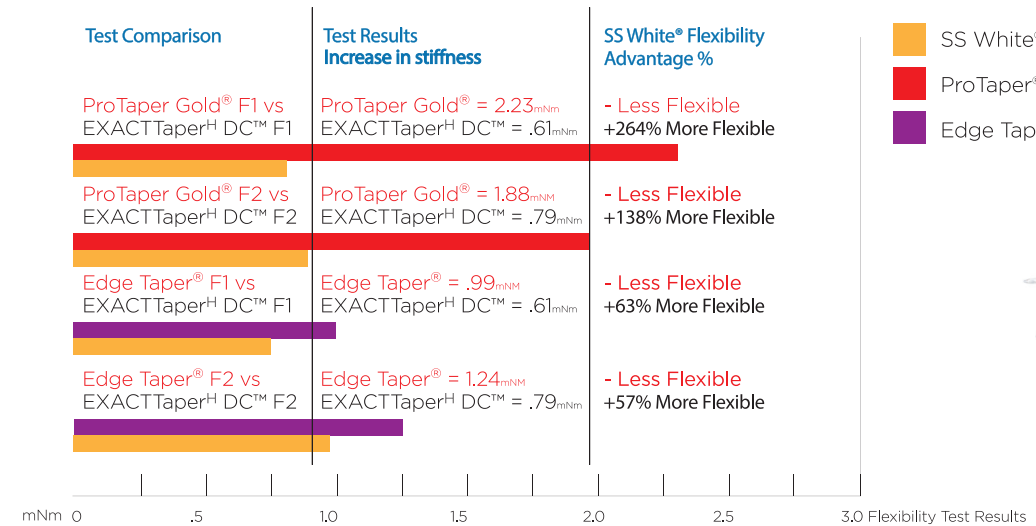
EXACTTaper<sup>H</sup> DC™ is **50.5% Stronger\*** than the closest comparable file significantly reducing the chance of file separation.  
(\*Based on F1 Comparison)



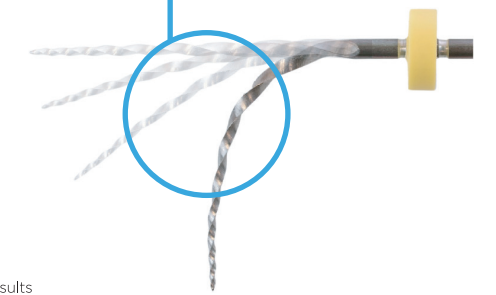
Courtesy: Dr. Eugen Buga

## Navigate Over Curved Canals Without the Stress

EXACTTaper<sup>H</sup> DC™ files utilize a proprietary heat-treating process which creates superior controlled memory and flexibility for up to 90° curves that accommodate even the most complex canal anatomies.



**264% MORE FLEXIBLE**  
EXACTTaper<sup>H</sup> DC™ is **264% More Flexible\*** than the ProTaper Gold®.  
(\*Based on F1 Comparison)



# NO CHANGE To Your Current Technique

The SS White® EXACTTaper<sup>H</sup> DC™ file system has been designed with multiple tapers that ensure flexibility and cut dentin in specific canal zones, while utilizing a .8 MFD for maximum pericervical dentin conservation, reducing the potential for over-preparation. EXACTTaper<sup>H</sup> DC™ files are available in comparable sizes, lengths and tapers to the Dentsply® ProTaper Gold® file system, and Edge Endo® Edge Taper™ file system. They require no change to current protocol or technique and offer the same predictable results.



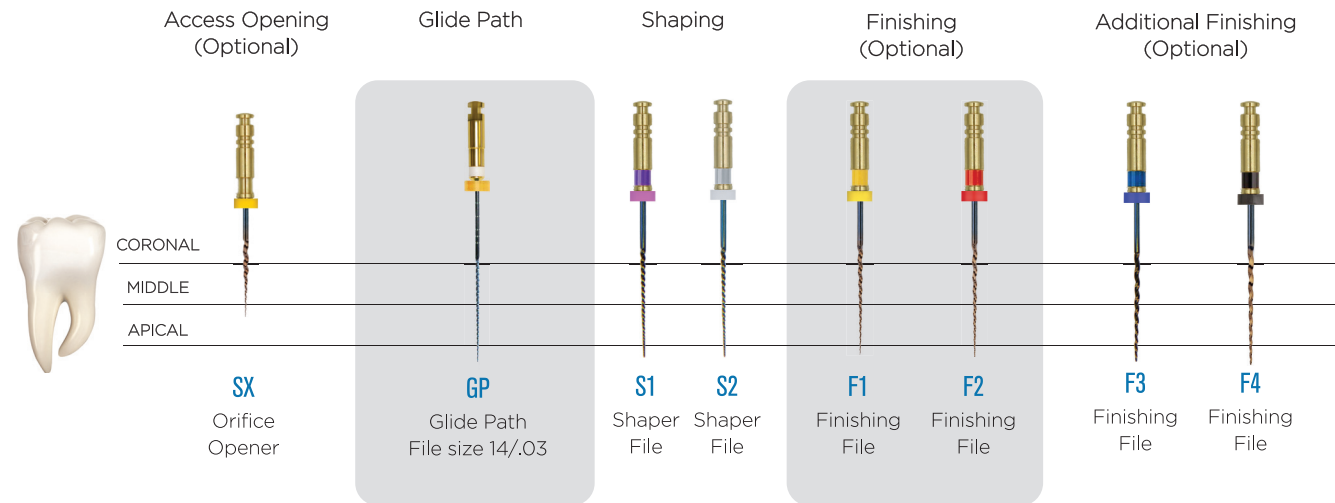
Courtesy: Dr. Reza Farshey

## Creating Initial Access

- 1) If removing a PFM or Zirconia crown, begin initial access by using the Great White or Great White Z.
- 2) Locate the orifices and create straight-line access using EndoGuide®.
- 3) Once the canals are located, the walls are made smooth and parallel using the non-end cutting Endo Safe-End® bur to complete the access.

## Minimally Invasive Endo Made Easy

- Scouting of the canal is accomplished using a pre-bent size 8 file to EWL, followed by size 10 and, if needed, size 15
- Use EXACTTaper<sup>H</sup> DC™ SX files in one or more passes to slightly enlarge the coronal aspect
- Create glide path using the appropriate ExactDC™ Glide Path Rotary File size 14/.03
- Use the shaping files (S1,S2 and SX) with a brushing motion on the outstroke, to more optimally prepare canals that exhibit irregular cross sections and to facilitate apical file progression
- Use the finishing files (F1-F4) with an 'in and out' action (not brushing)
- Always make sure to work in a wet field with NaOCl and use intra-canal lubricant when manually scouting canals
- Always irrigate and recapitulate with a size 10 hand file after each pass of a rotary file
- Frequently clean and inspect the flutes of EXACTTaper<sup>H</sup> DC™ files and discard if unwinding is seen



As with all new products, you must exercise caution until you become proficient in its use. Length determination is imperative to ensure proper instrumentation using any rotary or hand instrument.

- 1) A slow-speed handpiece is required for rotary file use.
- 2) Operate the hand piece at a speed of 300 RPM (Revolutions Per Minute).

FILE	SPEED rpm	TORQUE N/cm
SX & S1,S2	300	5.1
F1	300	1.5
F2, F3,F4	300	3.1

SS White® EXACTTaper<sup>H</sup> DC™ files may not be appropriate for all patients under all circumstances, so professional judgment and discretion should be exercised at all times. SS White® EXACTTaper<sup>H</sup> DC™ files should be used only by licensed dental professionals with appropriate levels of clinical experience and training. Caution and care should be used at all times. Treatment options and techniques outlined in this insert are suggestions only and may not be appropriate for all patients. Dentists must apply appropriate levels of force when using SS White® EXACTTaper<sup>H</sup> DC™ files. Excessive force can cause premature wear to the instruments. Use your professional judgment.

SS White® disclaims all liability and damages of any kind resulting from intentional or negligent conduct or otherwise that arise out of the use or misuse of any SS White® instruments or these instructions.

Recommended to use DiaDent® Gutta Percha and Paper Points.

## Product REFERENCE

### Glide Path



Description	Part Size	Order Number
GPath 6 pack	21 mm	318102
GPath 6 pack	25 mm	318103
GPath 6 pack	29 mm	318104

### Radicular Access



SX 6 pack	19 mm	318015
-----------	-------	--------

### Shaper



S1 6 pack:	21 mm	318012
S1 6 pack:	25 mm	318013
S1 6 pack:	31 mm	318014



S2 6 pack:	21 mm	318211
S2 6 pack:	25 mm	318212
S2 6 pack:	31 mm	318213

### Finishers



F1 6 pack:	21 mm	318000
F1 6 pack:	25 mm	318001
F1 6 pack:	31 mm	318002



F2 6 pack:	21 mm	318003
F2 6 pack:	25 mm	318004
F2 6 pack:	31 mm	318005

### Auxiliary Finishers



F3 6 pack:	21 mm	318006
F3 6 pack:	25 mm	318007
F3 6 pack:	31 mm	318008



F4 6 pack:	21 mm	318009
F4 6 pack:	25 mm	318010
F4 6 pack:	31 mm	318011

### Assorted Packs Available

SX-S1-F1-F2-F3-F4	21 mm	318016
SX-S1-F1-F2-F3-F4	25 mm	318017

## Matching DiaDent® Gutta Percha cones for SS White files

ORDER #	DESCRIPTION	FILE SIZE
867001	DIA-SYSTEM GTP.04 #20	Matches ExacTTaper H DC F1
867002	DIA-SYSTEM GTP.04 #25	Matches Exact Taper H DC F2
867003	DIA-SYSTEM GTP.04 #30	Matches Exact Taper H DC F3
867004	DIA-SYSTEM GTP.04 #35	Matches Exact Taper H DC F4
867005	Dia-ProISO GT .04 #15	Matches DC Taper 20 .06
867006	Dia-ProISO GT .04 #20	Matches DC Taper 22 .07 / 25 .06
867007	Dia-ProISO GT .04 #25	Matches DC Taper 25 .08 / 30 .06
867008	Dia-ProISO GT .04 #30	Matches DC Taper 35 .06
867009	Dia-ProISO GT .04 #35	Matches DC Taper 35 .06
867010	Dia-ProISO GT .04 #40	Matches DC Taper 40 .06 wide coronal
867011	GP Sliding Pkg #XF	Matches DC Taper 17 .04
867012	GP Sliding Pkg #FF	Matches DC Taper 20 .06 / 22 .07
867013	GP Sliding Pkg #MF	Matches DC Taper 26 .06 / 25 .08 / 30 .06
867014	Dia-Pro W Gold Small	Matches Exact Flow H Small
867015	Dia-Pro W Gold Primary	Matches Exact Flow H Primary
867016	Dia-Pro W Gold Medium	Matches Exact Flow H MED
867017	Dia-Pro W Gold Large	Matches Exact Flow H Large

## RECOMMENDED PROCEDURE KITS

### EndoGuide® Anterior Bicuspid Kit For Endodontic Access & Exploration

Kit Contents:

- (1) EndoGuide® EG1A (1) EndoGuide® EG1
- (1) EndoGuide® EG2 (1) EndoGuide® EG3
- (1) Great White® #2 (1) Great White®Z 856-018
- (1) Great White®Z 801-018

Order Number

18052



### EndoGuide® Molar Kit For Endodontic Exploration in Molars

Kit Contents:

- (1) EndoGuide® EG1 (1) EndoGuide® EG2
- (1) EndoGuide® EG3 (1) EndoGuide® EG4
- (1) EndoGuide® EG5 (1) EndoGuide® EG6
- (1) EndoGuide® EG7

Order Number

18051





Contact your Clinical Research Dental representative  
for more information or to request a demonstration



To Order: 1-800-265-3444  
[www.clinicalresearchdental.com](http://www.clinicalresearchdental.com)