

# Template®

Ultra Quick Matrix Material

Traditionally, dentists use putty, alginate, vacuum stint or bite registration as a matrix to fabricate their provisional restorations. Without fail, all of these materials either take too long, lack detail or do not provide enough rigidity to prevent excess flash.

## Clinical Challenges

**Putty** – Putty takes too long to set and lacks interproximal detail resulting in excess finishing time.

**Alginate** – Requires clean up and too often produces thick margins and interproximal tags that fold during reinsertion causing excess interproximal flash and time wasted finishing your provisional restoration.

**Vacuum Form** – The most time-consuming technique with the least accuracy. Provisionals made this way lack detailed anatomy which is not worth the expensive lab time.

**Bite Registration** – This is a fast material but usually lacks detail and flow causing more finishing time. Bite registration material is often very expensive.

The best solution for your next temporary matrix is Template® Ultra Quick Matrix Material, a silicone matrix material that provides far superior detail and accuracy. Best of all, it sets in 30 seconds – no vacuum, no hand-mixing, and no flash! Template will flow into the embrasure areas and into the finest morphology, yet when cured, it will release easily and maintain its stable form indefinitely.

## Take a Template of the Lingual!

Most dentists repair Class III and IV defects only to find themselves struggling with finishing the lingual aspect of the restoration – and during the struggle the clock keeps ticking! Now, when you use Template and the Lingual Matrix Technique, you can pre-shape and refine the lingual surface while you're restoring the tooth, leaving only the polishing step to complete the restoration.



## The Customizable, Distortion-Free, Disposable, Metal Temporary Tray!

TempTrays™ from Clinician's Choice® are designed for accuracy and versatility. Made from rigid aluminum, TempTrays are customizable and easy to use for both anterior and posterior temporary restorations. TempTrays can be easily adjusted for mal-aligned teeth and fit virtually all arch shapes. With high, perforated walls, the TempTray is designed to firmly retain the matrix material while eliminating the chance of distortion. TempTrays are the perfect companion to Template Ultra Quick Matrix Material and are a fraction of the cost of quadrant or dual-arch trays.

## TempTray™

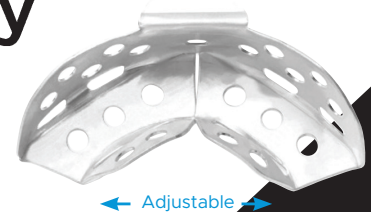
- Multiple teeth can be captured
- Posterior tabs for easy placement. Can be folded in to prevent retromolar pad impingement
- Adjustable, perforated sidewalls
- Single use. 100% recyclable



&

## Anterior TempTray™

- Unique split arch design to fit all arch widths
- Adjustable handle for easy placement and removal
- High sidewall to capture any tooth length
- Perforated sidewall
- Single use. 100% recyclable



## PROVISIONAL CROWN CLINICAL TECHNIQUE



1 Crown to be temporized.



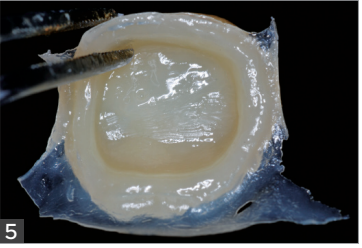
2 Template has ideal flow without slumping.



3 Inspire Esthetic Provisional Composite is extruded into the Template matrix. Template captures sharp marginal and occlusal detail and becomes rigid.



4 Inexpensive TempTrays are ideal for the Template matrix technique.



5 Template's accuracy results in minimal flash and finishing time.



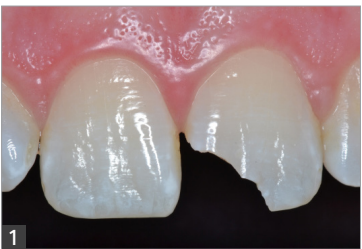
6 Inspire is strong, dense, and easy to finish (pre-polish shown).



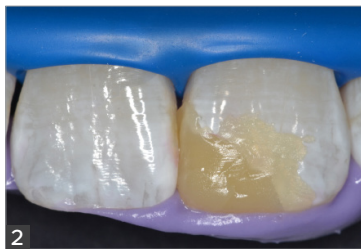
7 In seconds, Inspire can be polished to an ultra-esthetic finish.

*Dentistry and photography courtesy of Dr. Bob Margeas.*

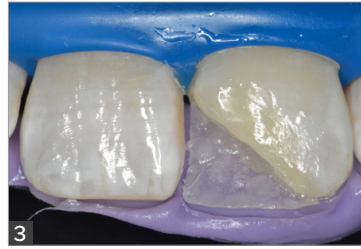
## TEMPLATE LINGUAL MATRIX CLINICAL TECHNIQUE



1 Initial case showing tooth #9 fractured.



2 After a mock-up restoration, the lingual and incisal surfaces were captured by a thick layer of Template.



3 After tooth preparation, etching, and bonding agent applied and light-cured, a nano filled composite was packed against Template matrix to form lingual shelf.



4 Dentin layer of a nano filled composite was used to replicate the "dentin" portion of the restoration.



5 Final layer of microfill composite (enamel shade) was placed to complete the restoration, cured, then polished.

*Dentistry and photography courtesy of Dr. Gildo Santos.*

<b>TEMPTRAY TRIAL KIT</b> 046152 Contains: 50 x TempTrays, 50 x Anterior TempTrays	<b>TEMPLATE MATRIX PACK</b> 018904 Contains: 2 x 50 mL Template Cartridges, 2 x 50 mL Template Clear Cartridges, Mixing Tips, Instructions/SDS
<b>TEMPTRAY 50-PACK</b> 046050	<b>TEMPLATE ULTRA QUICK MATRIX MATERIAL 50ML 4-PACK</b> 028904 Contains: 4 x 50mL Cartridges, Mixing Tips, Instructions/SDS
<b>TEMPTRAY 100-PACK</b> 046100	<b>TEMPLATE ULTRA QUICK MATRIX MATERIAL 50ML 12-PACK</b> 018912 Contains: 12 x 50mL Cartridges, Instructions/SDS
<b>TEMPTRAY 250-PACK</b> 046102	<b>TEMPLATE ULTRA QUICK MATRIX MATERIAL 50ML 36-PACK</b> 018936 Contains: 36 x 50 mL Cartridges, Instructions/SDS
<b>ANTERIOR TEMPTRAY 50-PACK</b> 046150	<b>TEMPLATE ULTRA QUICK MATRIX MATERIAL 120ML 2-PACK</b> 021812 Contains: 2 x 120 mL Cartridges, 6 Dynamic Mixing Tips, Instructions/SDS
<b>ANTERIOR TEMPTRAY 100-PACK</b> 046151	